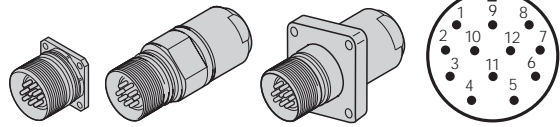


← 27S12-03

03S12-03

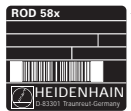
35S12-03



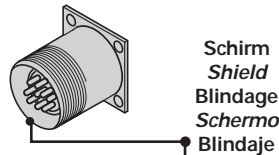
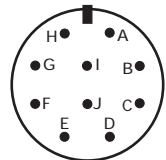
5	6	8	1	3	4	12	2	10	11	7	/
A		B		R		5V U _P	5V sensor	0V U _N	0V sensor	/	/
+	-	+	-	+	-	●	●	●	●	/	/
braun brown brun marrone marrón	grün green vert verde verde	grau gray gris grigio gris	rosa pink rose rosa rosa	rot red rouge rosso rojo	schwarz black noir nero negro	braun/grün brown/green brun/vert marrone/verde marrón/verde	blau blue bleu azzurro azul	weiß/grün white/green blanc/vert bianco/verde blanco/verde	weiß white blanc bianco blanco	violett violet violet viola violeta	gelb yellow jaune giallo amarillo

Die Sensorleitung ist intern mit der Versorgungsleitung verbunden.
The sensor line is connected internally with the power supply.
 La ligne de palpeur est reliée de manière interne à la ligne d'alimentation.
La linea del sensore è collegata internamente con la linea di alimentazione.
 La linea de sensor està unida internamente con la linea de alimentación.

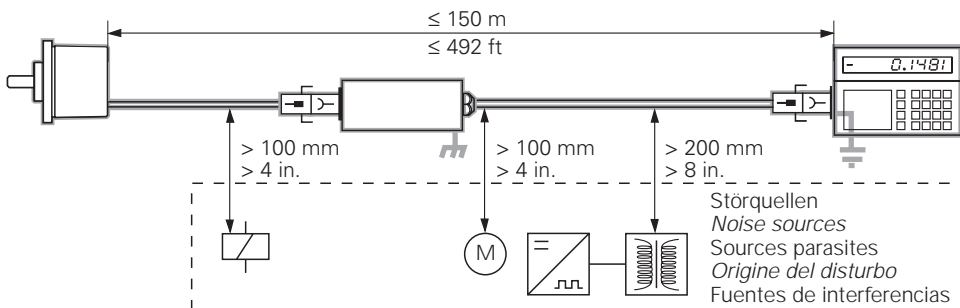
Schirm auf Gehäuse
Shield on housing
 Blindage sur boîtier
Schermo sulla carcassa
 Blindaje a carcasa



← 40S10-4F



A	H	B	I	C	J	D	F	E	G
A+	A-	B+	B-	R+	R-	5V U _P	0V U _N	/	



ROD 581
 ROD 583
 ROD 584
 ROD 589

Montageanleitung
Mounting Instructions
 Instructions de montage
Istruzioni di montaggio
 Instrucciones de montaje

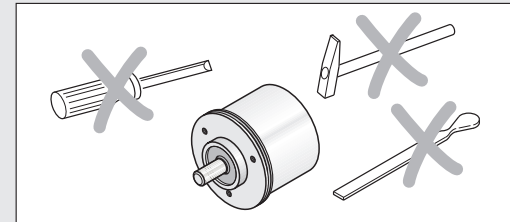
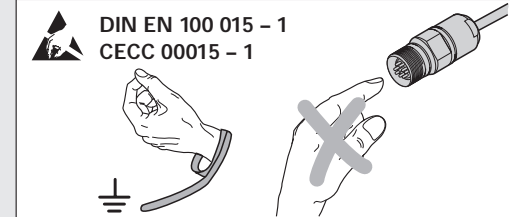
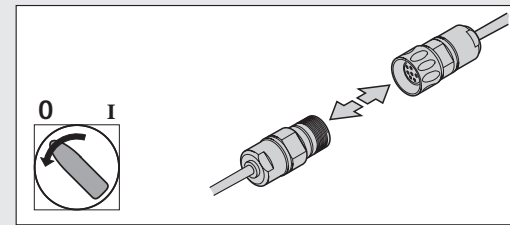
7/2003



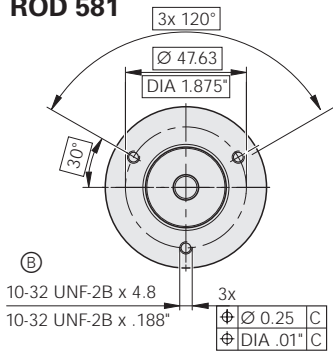
DR. JOHANNES HEIDENHAIN GmbH
 Dr.-Johannes-Heidenhain-Straße 5
 83301 Traunreut, Germany
 ☎ +49 (86 69) 31-0
 ☎ +49 (86 69) 50 61
 e-mail: info@heidenhain.de

Technical support ☎ +49 (86 69) 31-1000
 Measuring systems ☎ +49 (86 69) 31-3104
 e-mail: service.ms-support@heidenhain.de
 TNC support ☎ +49 (86 69) 31-3101
 e-mail: service.nc-support@heidenhain.de
 NC programming ☎ +49 (86 69) 31-3103
 e-mail: service.nc-pgm@heidenhain.de
 PLC programming ☎ +49 (86 69) 31-3102
 e-mail: service.plc@heidenhain.de
 Lathe controls ☎ +49 (7 11) 95 2803-0
 e-mail: service.hsf@heidenhain.de

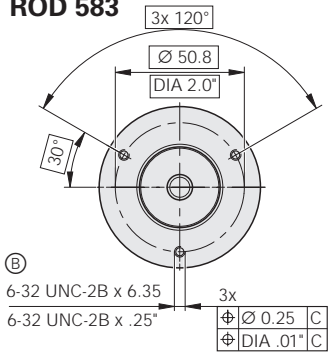
www.heidenhain.de



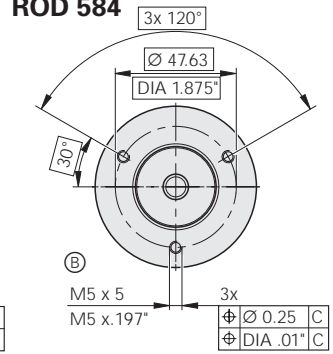
ROD 581



ROD 583

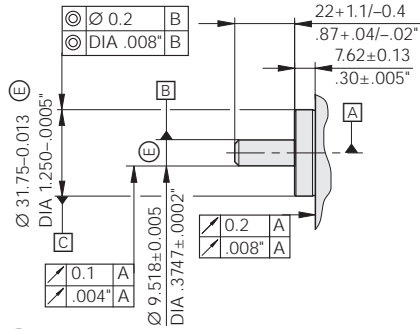


ROD 584

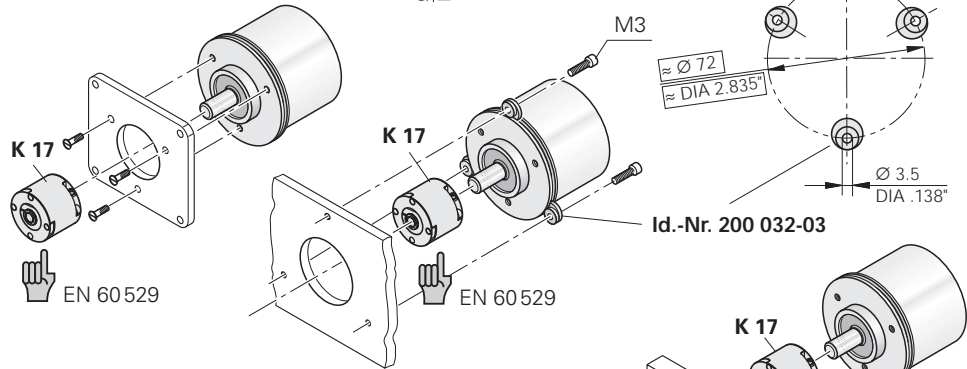


Ⓑ = Befestigungsgewinde
Threaded mounting hole
Trou de fixation
Fori filettati
Rosca de sujeción

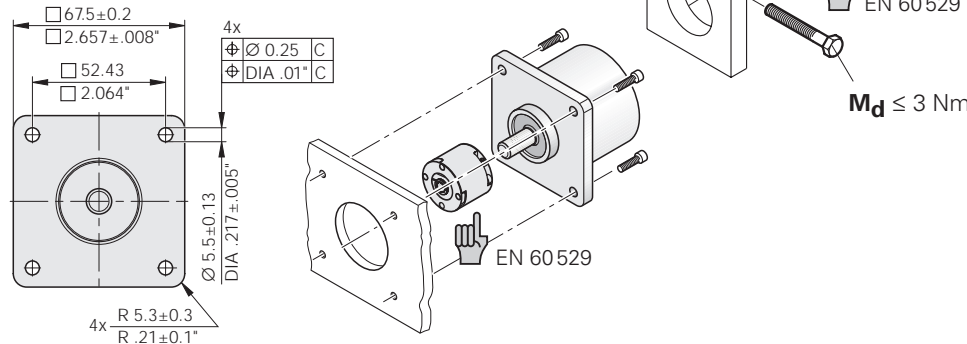
Tolerancing ISO 8015
ISO 2768 - m H



Ⓐ = Lagerung
Bearing
Roulement
Cuscinetto
Rodamiento

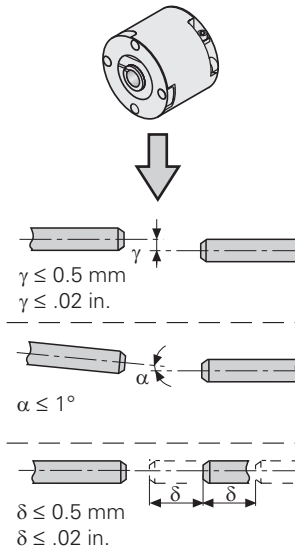


ROD 589



K 17

Id.-Nr. 296 746-xx



	max. 40 N ($\leq 6\,000\text{ min}^{-1}$) max. 10 N ($\leq 12\,000\text{ min}^{-1}$)
	max. 60 N ($\leq 6\,000\text{ min}^{-1}$) max. 20 N ($\leq 12\,000\text{ min}^{-1}$)

	$T \geq -40\text{ }^\circ\text{C}$ ($-40\text{ }^\circ\text{F}$)	$T \geq -10\text{ }^\circ\text{C}$ ($14\text{ }^\circ\text{F}$)
Ø 6 mm DIA .236 in.	$R_1 \geq 20\text{ mm}$ $R_1 \geq .8\text{ in.}$	$R_2 \geq 75\text{ mm}$ $R_2 \geq 3\text{ in.}$
Ø 8 mm DIA .315 in.	$R_1 \geq 40\text{ mm}$ $R_1 \geq 1.6\text{ in.}$	$R_2 \geq 100\text{ mm}$ $R_2 \geq 4\text{ in.}$

