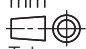
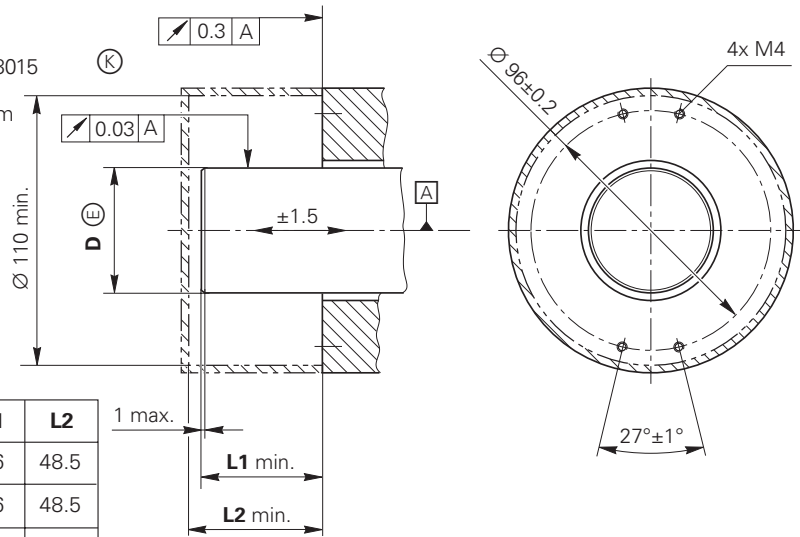


mm

 Tolerancing ISO 8015
 ISO 2768 - m H
 < 6 mm: ±0.2 mm

 EN 60 529

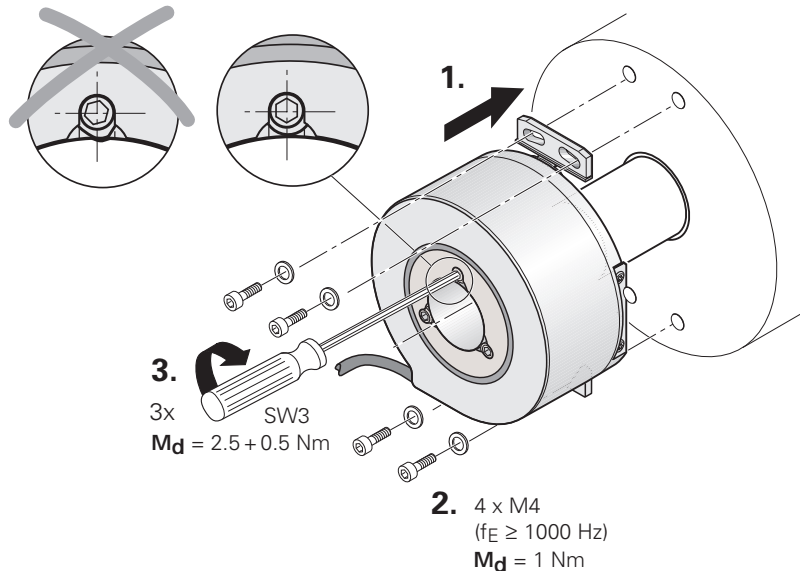


D	L1	L2
Ø 20h7	46	48.5
Ø 24h7	46	48.5
Ø 25h7	46	48.5
Ø 30h7	46	48.5
Ø 38h7	56	58.5
Ø 50h7	56	58.5

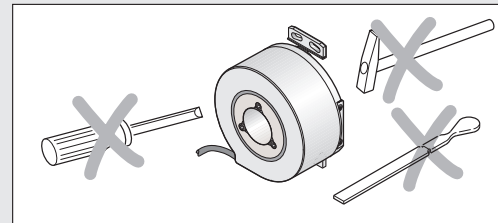
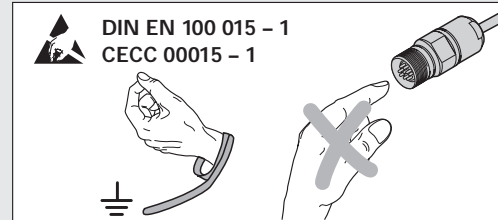
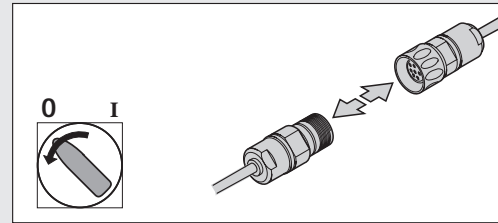


Ⓚ = Kundenseitige Anschlussmaße
 Required mating dimensions
 Conditions requises pour le montage
 Quote per il montaggio
 Cotas de montaje requeridas

ⓐ = Lagerung
 Bearing
 Roulement
 Cuscinetto
 Rodamiento



HEIDENHAIN



Montageanleitung
 Mounting Instructions
 Instructions de montage
 Istruzioni di montaggio
 Instrucciones de montaje

ECN 113 
 ECN 113 

10/2003

DR. JOHANNES HEIDENHAIN GmbH

Dr.-Johannes-Heidenhain-Straße 5

83301 Traunreut, Germany

☎ +49 (8669) 31-0

FAX +49 (8669) 5061

e-mail: info@heidenhain.de

Technical support ☎ +49 (8669) 31-1000

Measuring systems ☎ +49 (8669) 31-31 04

e-mail: service.ms-support@heidenhain.de

TNC support ☎ +49 (8669) 31-31 01

e-mail: service.nc-support@heidenhain.de

NC programming ☎ +49 (8669) 31-31 03

e-mail: service.nc-pgm@heidenhain.de

PLC programming ☎ +49 (8669) 31-31 02

e-mail: service.plc@heidenhain.de

Lathe controls ☎ +49 (7 11) 95 28 03-0

e-mail: service.hsf@heidenhain.de

www.heidenhain.de



Ve 00

512 640-91 · 30 · 10/2005 · H · Printed in Germany · Änderungen vorbehalten

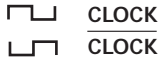
Subject to change without notice · Sous réserve de modifications · Con riserva di modifiche · Sujeto a modificaciones



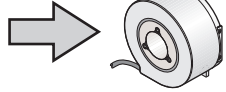
ECN 113 SSI ECN 113 EnDat



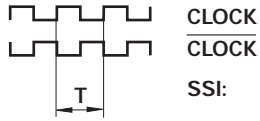
RS-485



$U_p = 5\text{ V} \pm 5\%$
 $U_p = 10 \dots 30\text{ V}$
(max. 180 mA)



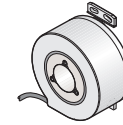
RS-485



SSI: $T = 1 \dots 10\ \mu\text{s}$
 $f = 1000 \dots 100\ \text{kHz}$
EnDat: $T = 0.5 \dots 10\ \mu\text{s}$
 $f = 2000 \dots 100\ \text{kHz}$



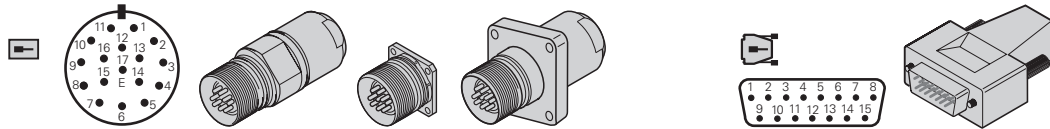
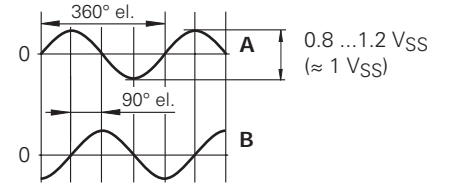
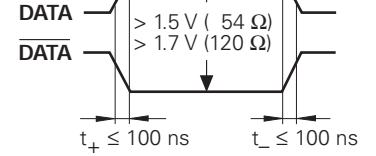
EN 50 178/4.98; 5.2.9.5
IEC 364-4-41: 1992; 411(PELV/SELV)
(siehe, see, voir, vedi, véase
HEIDENHAIN D 231 929)



RS-485



RS-485

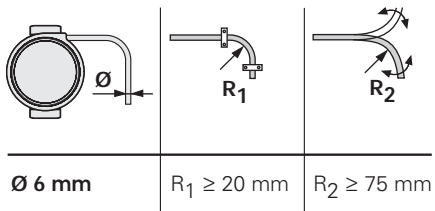


Außenschirm auf Gehäuse
External shield on housing
blindage externe sur boîtier
schermo esterno sulla carcassa
blindaje externo a carcasa

1) Innenschirm
Internal shield
blindage interne
schermo interno
blindaje interno

$U_p = 5\text{ V} \pm 5\%$
 $U_p = 10 \dots 30\text{ V}$

15	16	12	13	14	17	8	9	7	10	1	4	11	2	3	5	6
1	9	3	11	5	13	8	15	4	2	12	10	6	7	14	/	/
A		B		DATA	DATA	CLOCK	CLOCK	Up	0V UN	Up sensor	0V sensor	1)	/	/	/	/
+	-	+	-													
grün/schwarz green/black vert/noir verde/nero verde/negro	gelb/schwarz yellow/black jaune/noir giallo/nero amarillo/negro	blau/schwarz blue/black bleu/noir azzurro/nero azul/negro	rot/schwarz red/black rouge/noir rossa/nero rojo/negro	grau gray gris grigio gris	rosa pink rose rosa rosa	violett violet violet viola violeta	gelb yellow jaune giallo amarillo	braun/grün brown/green brun/vert marrone/verde marrón/verde	weiß/grün white/green blanc/vert bianco/verde blanco/verde	blau blue bleu azzurro azul	weiß white blanc bianco blanco		schwarz black noir nero negro	rot red rouge rosso rojo	grün green vert verde verde	braun brown brun marrone marrón



L	T	f
10 m	0.5...10µs	△ 2000...100 kHz
50 m	1.0...10µs	△ 1000...100 kHz
100 m	2.0...10µs	△ 500...100 kHz
150 m	3.3...10µs	△ 300...100 kHz

