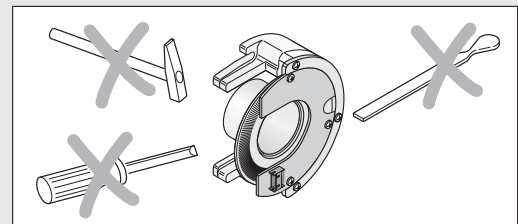
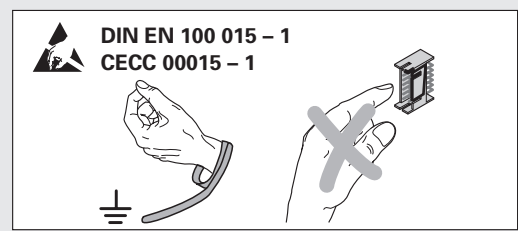
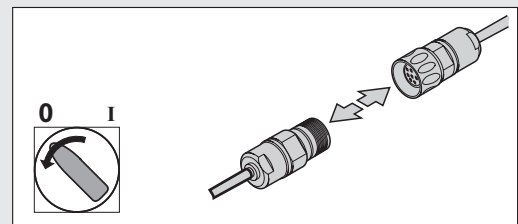


6b	6a	5b	5a	4b	4a	2a	1a	2b	1b	3a
A		B		R		5V Up	0V U _N	5V sensor	0V sensor	/
+	-	+	-	+	-					
braun <i>brown</i> brun <i>marrone</i> marrón	grün <i>green</i> vert <i>verde</i> verde	grau <i>gray</i> gris <i>grigio</i> gris	rosa <i>pink</i> rose <i>rosa</i> rosa	rot <i>red</i> rouge <i>rosso</i> rojo	schwarz <i>black</i> noir <i>nero</i> negro	braun/grün <i>brown/green</i> brun/vert <i>marrone/verde</i> marrón/verde	weiß/grün <i>white/green</i> blanc/vert <i>bianco/verde</i> blanco/verde	blau <i>blue</i> bleu <i>azzurro</i> azul	weiß <i>white</i> blanc <i>bianco</i> blanco	violett <i>violet</i> violet <i>viola</i> violeta

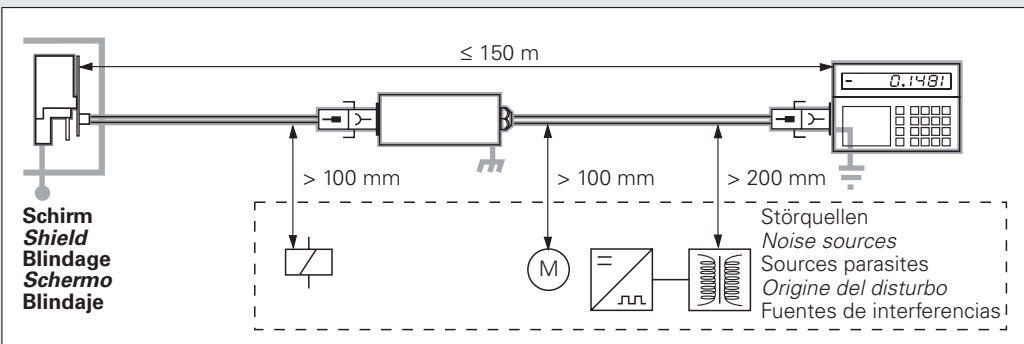
Die Sensorleitung ist intern mit der Versorgungsleitung verbunden.
The sensor line is connected internally with the power supply.
 La ligne de palpeur est reliée de manière interne à la ligne d'alimentation.
La linea del sensore è collegata internamente con la linea di alimentazione.
 La línea de sensor está unida internamente con la línea de alimentación.



Montageanleitung
Mounting Instructions
 Instructions de montage
Istruzioni di montaggio
 Instrucciones de montaje

ERO 1385

3/2004



Ø 4.5 mm	R ₁ ≥ 10 mm	R ₂ ≥ 50 mm
	R ₁ ≥ 40 mm	R ₂ ≥ 100 mm

DR. JOHANNES HEIDENHAIN GmbH
 Dr.-Johannes-Heidenhain-Straße 5
83301 Traunreut, Germany
 ☎ +49 (8669) 31-0
 📠 +49 (8669) 5061
 E-Mail: info@heidenhain.de

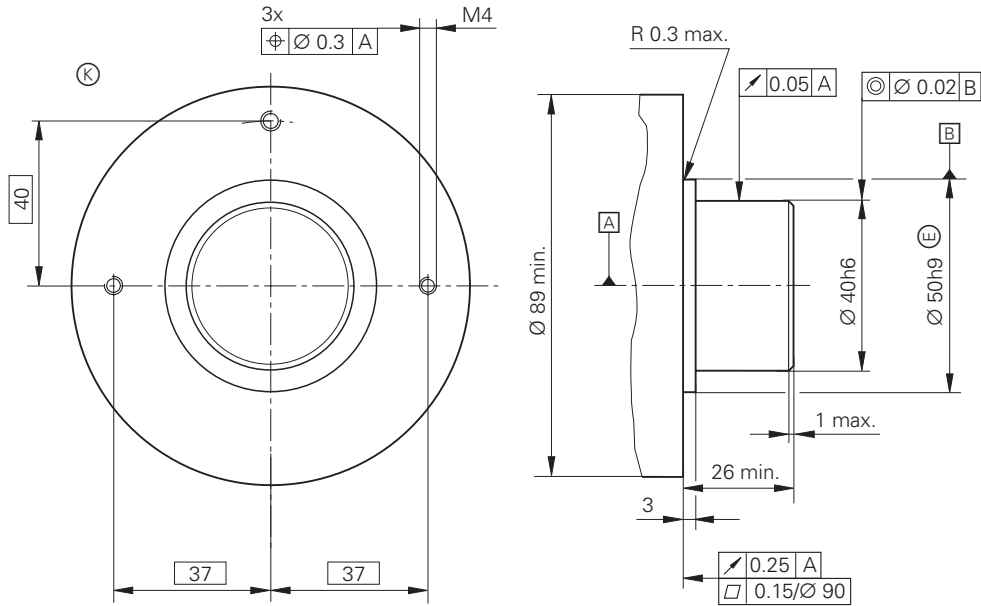
Technical support 📠 +49 (8669) 32-1000
Measuring systems ☎ +49 (8669) 31-31 04
 E-Mail: service.ms-support@heidenhain.de
TNC support ☎ +49 (8669) 31-31 01
 E-Mail: service.nc-support@heidenhain.de
NC programming ☎ +49 (8669) 31-31 03
 E-Mail: service.nc-pgm@heidenhain.de
PLC programming ☎ +49 (8669) 31-31 02
 E-Mail: service.plc@heidenhain.de
Lathe controls ☎ +49 (8669) 31-31 05
 E-Mail: service.lathe-support@heidenhain.de

www.heidenhain.de



ERO 1385

Maße in mm
 Dimensions in mm
 Cotes en mm
 Dimensioni in mm
 Dimensiones en mm

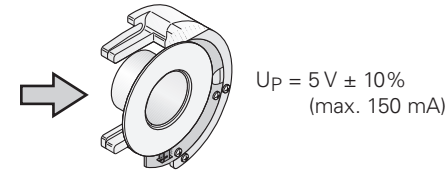


Ⓚ = Kundenseitige Anschlussmaße
 Required mating dimensions
 Conditions requises pour le montage
 Dimensioni di collegamento lato cliente
 Cotas de montaje requeridas

Z = Strichzahl
 Line count
 nombre de traits
 numero di linee
 número de impulsos

Z	a
< 2000	0.3-0.1
≥ 2000 ... ≤ 5000	0.2-0.1

A = Lagerung
 Bearing
 Roulement
 Cuscinetto
 Rodamiento



EN 50 178/4.98; 5.2.9.5
 IEC 364-4-41: 1992; 411 (PELV/SELV)
 (siehe, see, voir, vedi, véase
 HEIDENHAIN D 231 929)

