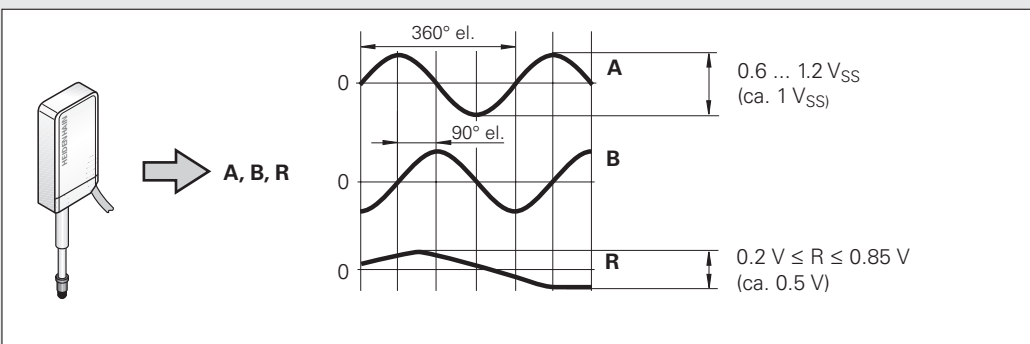
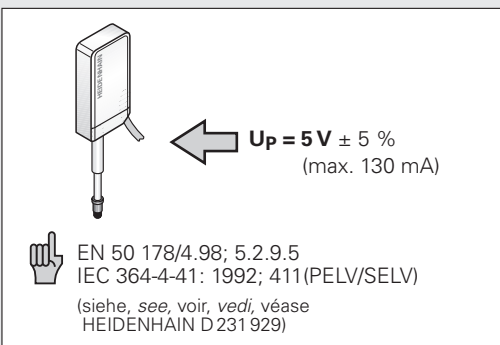


HEIDENHAIN

Montageanleitung
Mounting Instructions
Instructions de montage
Istruzioni di montaggio
Instrucciones de montaje

MT 1281

6/2002



DR. JOHANNES HEIDENHAIN GmbH

Dr.-Johannes-Heidenhain-Straße 5

83301 Traunreut, Germany

☎ +49 (8669) 31-0

FAX +49 (8669) 5061

E-Mail: info@heidenhain.de

Technical support ☎ +49 (8669) 32-1000

Measuring systems ☎ +49 (8669) 31-3104

E-Mail: service.ms-support@heidenhain.de

TNC support ☎ +49 (8669) 31-3101

E-Mail: service.nc-support@heidenhain.de

NC programming ☎ +49 (8669) 31-3103

E-Mail: service.nc-pgm@heidenhain.de

PLC programming ☎ +49 (8669) 31-3102

E-Mail: service.plc@heidenhain.de

Lathe controls ☎ +49 (8669) 31-3105

E-Mail: service.lathe-support@heidenhain.de

www.heidenhain.de



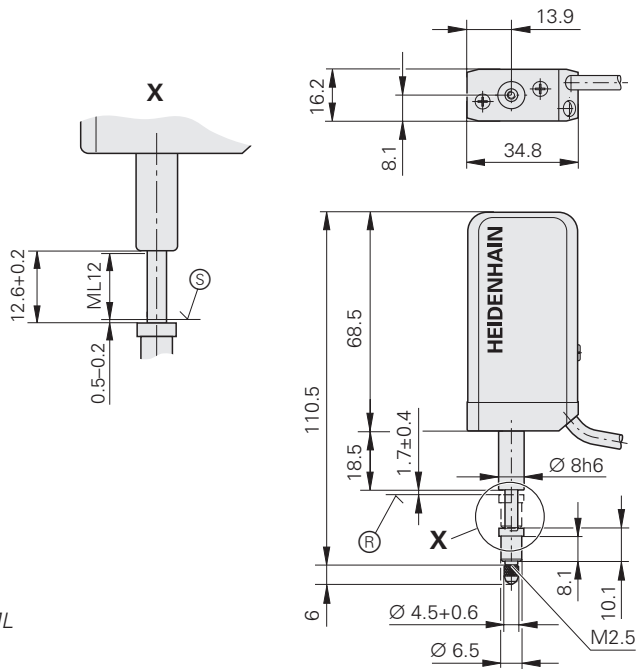
Ve 00

335 270-92 · 2 · 9/2007 · E · Printed in Germany · Änderungen vorbehalten

Subject to change without notice · Sous réserve de modifications · Con riserva di modifiche · Sujeto a modificaciones

MT 1281

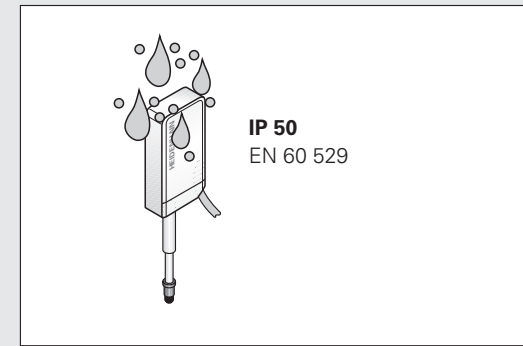
mm
 Tolerancing ISO 8015
 ISO 2768 - m H
 < 6 mm: ±0.2 mm



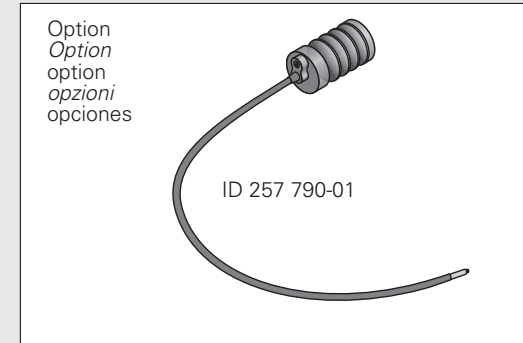
Ⓜ = Referenzmarken-Lage
 Reference mark position
 marque de référence
 indici di riferimento
 marca de referencia

Ⓢ = Beginn der Messlänge ML
 Begin. of meas. length ML
 début longueur utile ML
 inizio lunghezza di misura ML
 comienzo longitud útil ML

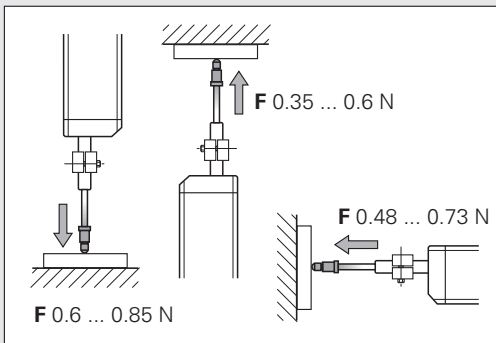
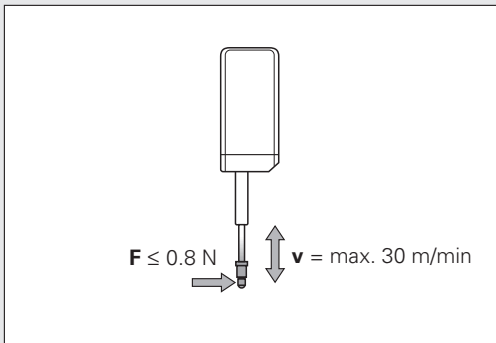
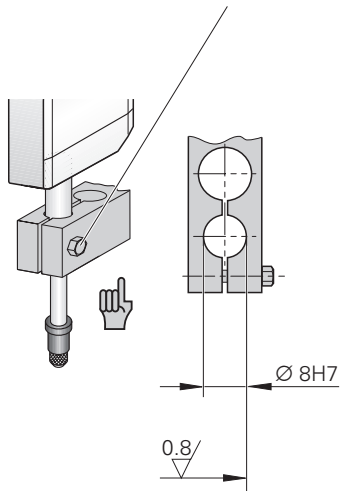
Ø 4.5 mm	R ₁ ≥ 10 mm	R ₂ ≥ 50 mm
	R ₁ ≥ 40 mm	R ₂ ≥ 100 mm



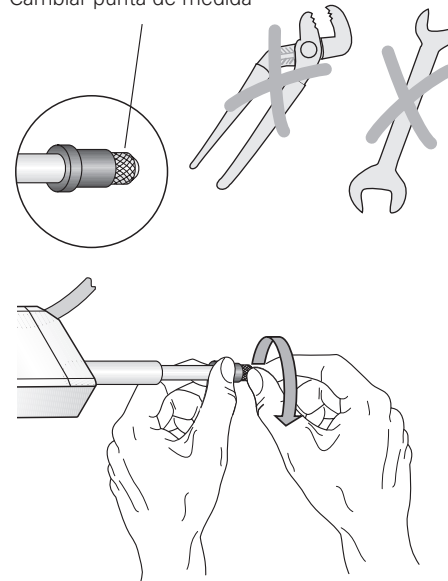
	°C (°F)	
	-20 ... 70 °C (-4 ... 158 °F)	



Zu starke Kraft klemmt Meßbolzen
 Excessive force jams the plunger
 Force trop élevée serre la tige de mesure
 Una forza eccessiva blocca lo stelo di misura
 Una fuerza excesiva bloquea el vástago de medición



Messeinsatz wechseln
 Changing the measuring contact
 Changer de touche de mesure
 Cambiare dispositivo di misura
 Cambiar punta de medida



Ausfahrgeschwindigkeit einstellbar
 Extension speed of plunger is adjustable
 Vitesse de sortie réglable
 Velocità di uscita regolabile
 Velocidad de salida ajustable

