



HEIDENHAIN



Preliminary
User's Guide

EIB 700 Series Application Software

3/2012

General Information

General Information

The application software permits demonstration of the basic capabilities of the EIB 700 series. All functions that are used in typical applications are supported, but not all possible functions are supported. More than one EIB can be managed.

This Quick Reference Guide only rudimentarily introduces the program and its operation. The details regarding the various settings are described in the manual.

The CD contains the program both as an executable file and as source code.

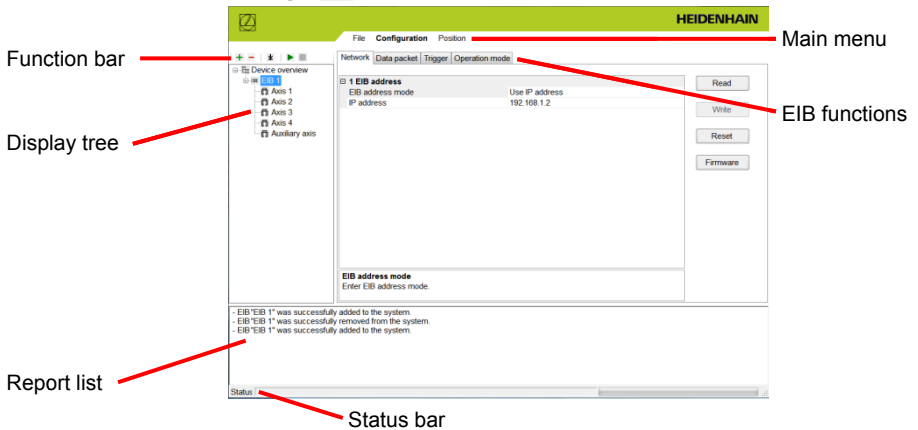
Please note:

This software is just a beta version that does not support the full scope of functions and has not yet been fully tested.






Start Options

- “” Use Windows-defined language
- “/l:default” Use default language = en-US
- “/l:en-US” Use default language = en-US
- “/l:de-DE” Use German as language

Start screen (after pressing “+”)

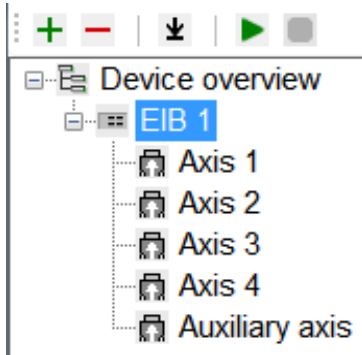


Function bar

-  Add an EIB
-  Remove an EIB
-  Transfer the configuration to the EIB
-  Start application
-  End application

Start Options

Display tree



Click to select the respective EIB or axis. The selection of an EIB or an axis determines which tabs are shown/hidden in the EIB functions.

Report list

The most important steps and messages are displayed here. The list can be marked and copied with the mouse.

Status bar

Display of the most important status messages.

Main Menus

File menu

Open project	The selected settings can be stored in a file. The corresponding menu commands are used for file handling.
Save project	
Save project as...	
Clear Report List	Empties the report list.
Info	Information about the version of the application software.
Exit	Exits the application.

Configuration menu

The corresponding EIB functions are shown as tabs. The functions for axis setting are only shown if an axis was activated in the display tree.

EIB functions:

“Network”

The connection with the EIB is established (if a button is pressed) and the appropriate parameters are displayed. They can also be changed and written to the EIB (“Read” and “Write” buttons).

Press “Reset” to reset the EIB.

Press “Firmware” to update the firmware of the EIB.

Note about changing the network address:

- Enter the new IP address under “Network Parameters” → “Write” button
- Press the “Reset” button (the changed address does not take effect until after the EIB is reset).
 - ➔ The error message that appears is caused by the application, and must be acknowledged! (conflict between the IP addresses under “Network Parameters” and “EIB Address”)
- Change the IP address under “EIB Address” → “Read” button
 - ➔ It should now be possible to address the EIB under the new address.

“Axis”

Is active if an axis was activated in the display tree. Settings of the corresponding axis parameters.

Main Menus

“Data Packet”

Displays the data packets transmitted by the respective EIB.

“Trigger”

Selection of the trigger properties.

The settings always refer to the currently selected EIB.

“Operation mode”

Selection of the operating mode.

This setting always refers to all EIB units.

“Position” menu

The corresponding EIB functions are shown as tabs. The functions for displaying detail information are only shown if an axis was activated in the display tree.

EIB functions

“Summary Display”

An overview shows the position values of the four axes of the respective EIB units.

Displays:

Status	Status of the respective axis (red/green) <ul style="list-style-type: none">• Green: everything is OK• Red: an error has occurred; see “Detail Display” for more information
REF	Display of the reference-mark status <ul style="list-style-type: none">• Gray: no reference mark active (→ “Start-REF”)• Yellow blinking: searching for reference mark• Green: search for reference mark completed successfully
TRIG	Display of the trigger status <ul style="list-style-type: none">• Yellow blinking: waiting for trigger event• Green: trigger event active (remains active for approx. three seconds)

Operating elements:

Start-REF	Starts the search for the reference mark
Clear	Resets the counter, clears the last search for a reference mark

“Detail Display”

Along with the displays of the “Summary Display,” information about the transmission status and the contents of the data packets sent from the EIB to the PC are shown. Individual transmission errors can be reset during operation (button next to the respective display).

The “Recording” operating mode also shows how full the EIB’s internal buffer is. Specific values can be selected and displayed via the operating elements after recording has ended.

“Display Options”

Various display options can be set.

You can also set whether the contents of the data packets are to be stored in a file.

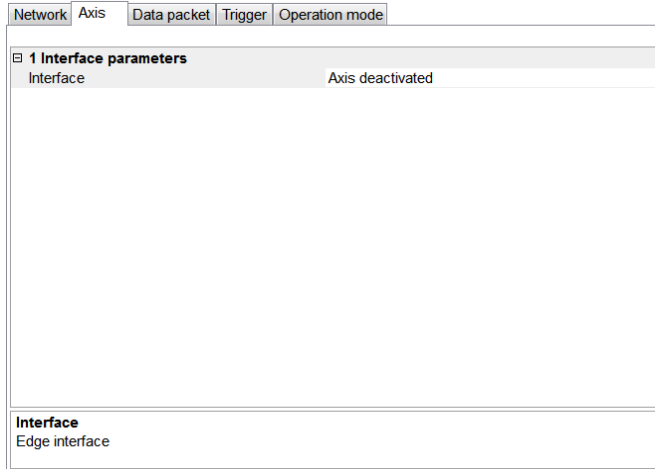
Note about the Drop-Down Menus

Note about the Drop-Down Menus

Drop-down menus are used for most selection menus. Here is an example for selecting the interface of the axis.

Step 1

Screen when “Axis” is called the first time



As a default, the axis is deactivated.
Tips are shown in the lower area.

Step 2

Selection

Network	Axis	Data packet	Trigger	Operation mode
1 Interface parameters				
Interface		Axis deactivated		
Interface				
Edge interface				

Click “Axis deactivated,” and an arrow appears to the right. Click this arrow to show the possible selections. Double-click to roll through the selection possibilities.

Step 3

Activate the selection

Network	Axis	Data packet	Trigger	Operation mode
1 Interface parameters				
Interface		Encoder with incremental signals (1 Vpp)		
2 Options for incremental interfaces				
Input bandwidth		500kHz		
Online compensation		Activated		
Terminating resistors		Activated		
Type of reference marks		No reference mark		
Encoder type		Angle encoder / rotary encoder		
Number of signal periods per revolution		5000		
3 Data packet				
Status word		will be sent		
Position value		will be sent		
Timestamp		will be sent		
ADC values		won't be sent		
Interface				
Edge interface				

If the desired selection was confirmed by clicking it, the selection appears and possibilities for other settings are shown. Settings changed from the default value are shown in bold.

HEIDENHAIN

DR. JOHANNES HEIDENHAIN GmbH

Dr.-Johannes-Heidenhain-Straße 5

83301 Traunreut, Germany

☎ +49 8669 31-0

☎ +49 8669 5061

E-mail: info@heidenhain.de

Technical support ☎ +49 8669 32-1000

Measuring systems ☎ +49 8669 31-3104

E-mail: service.ms-support@heidenhain.de

TNC support ☎ +49 8669 31-3101

E-mail: service.nc-support@heidenhain.de

NC programming ☎ +49 8669 31-3103

E-mail: service.nc-pgm@heidenhain.de

PLC programming ☎ +49 8669 31-3102

E-mail: service.plc@heidenhain.de

Lathe controls ☎ +49 8669 31-3105

E-mail: service.lathe-support@heidenhain.de

www.heidenhain.de