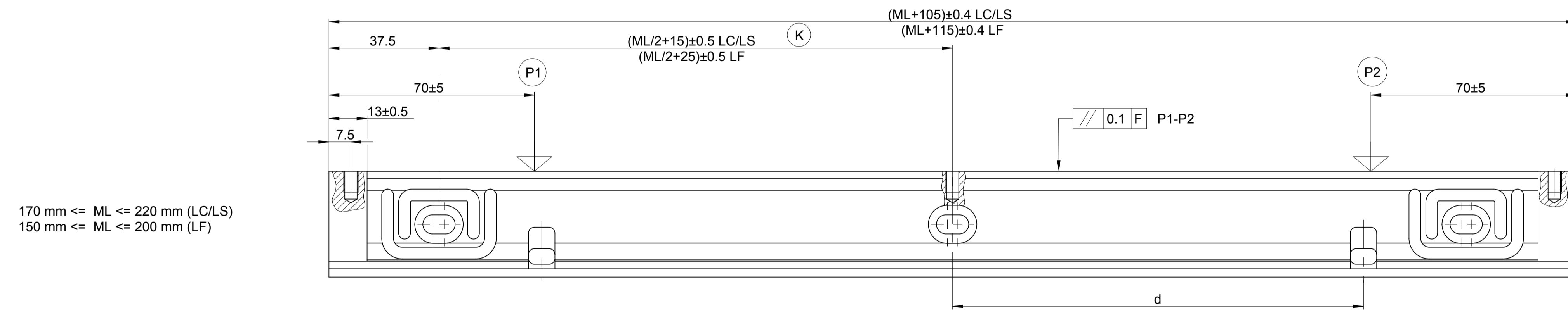
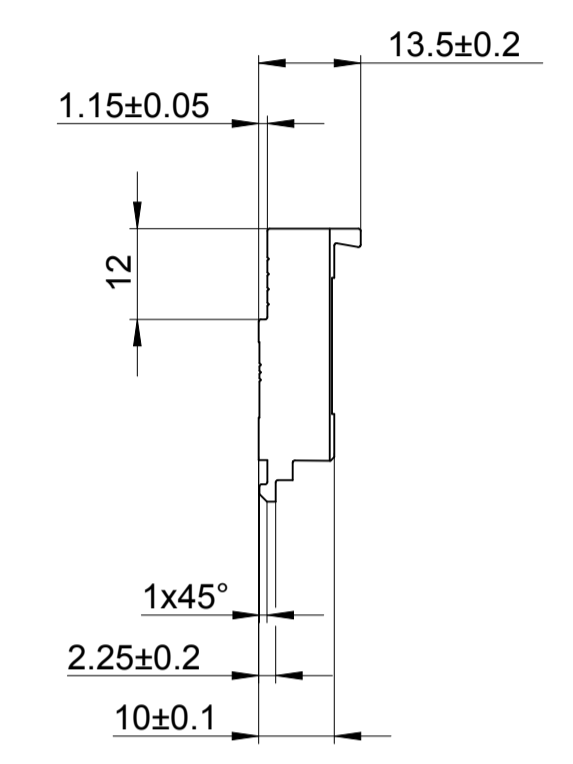
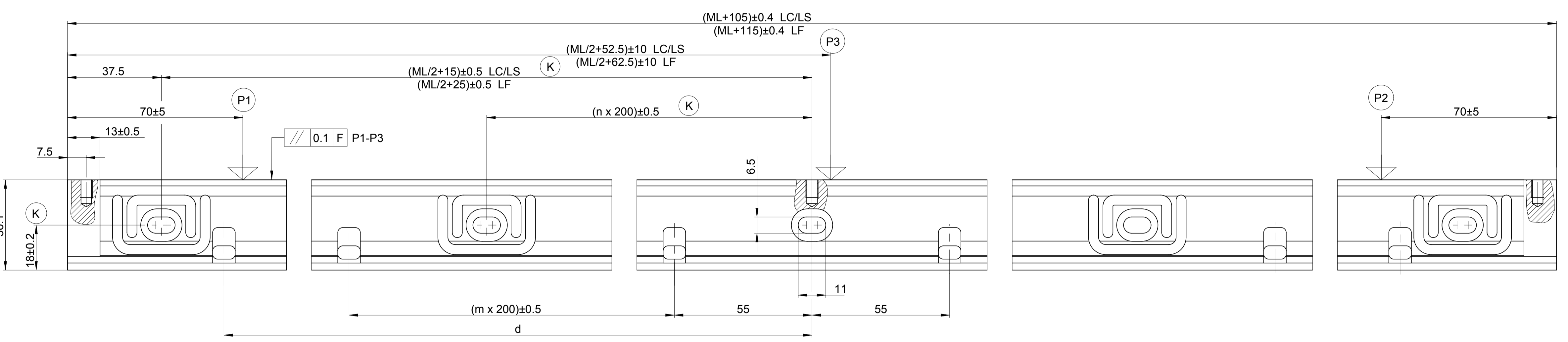
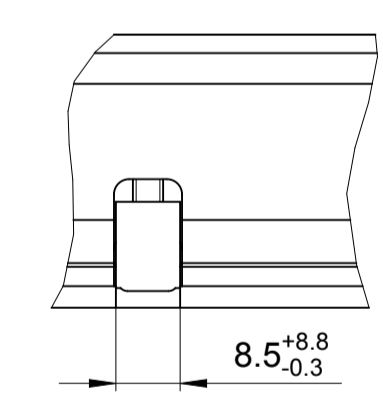
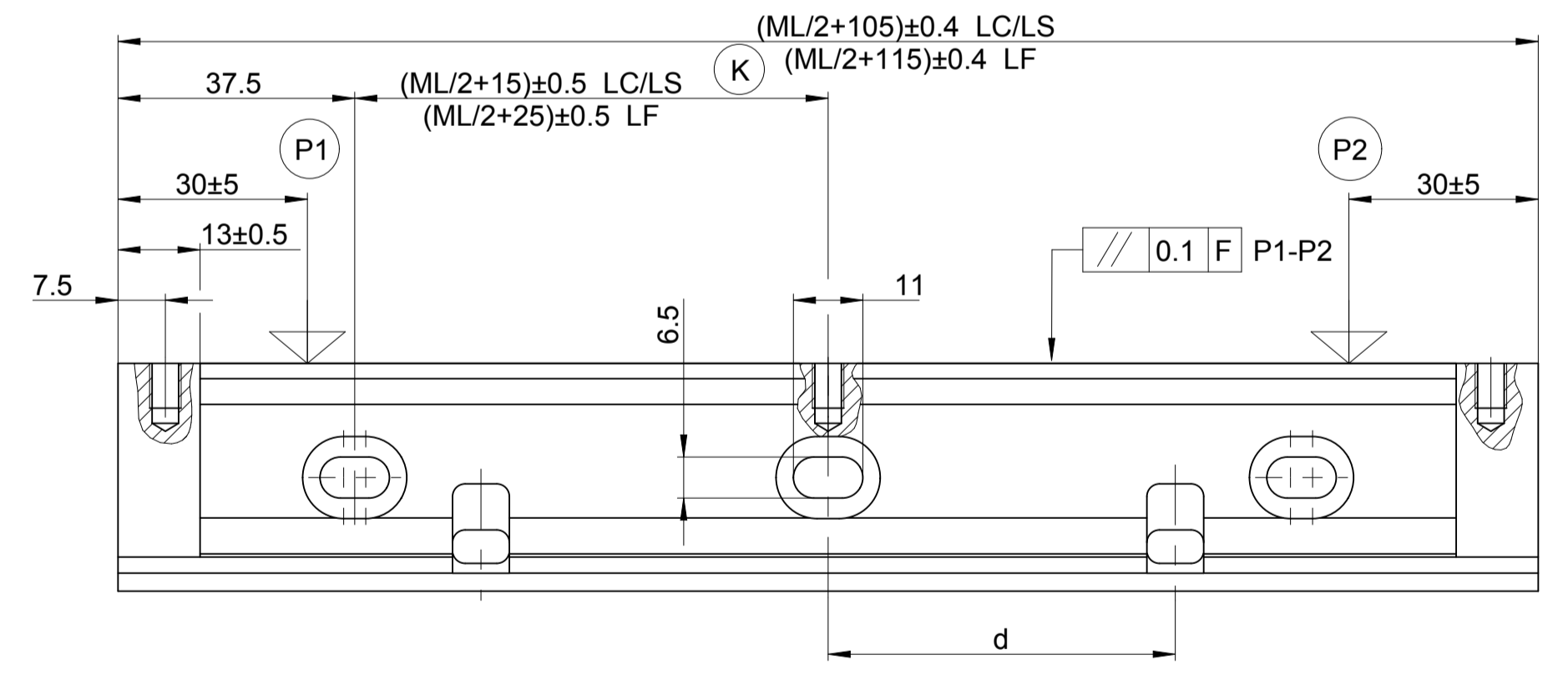


ML > 220 mm (LC/LS)
ML > 200 mm (LF)

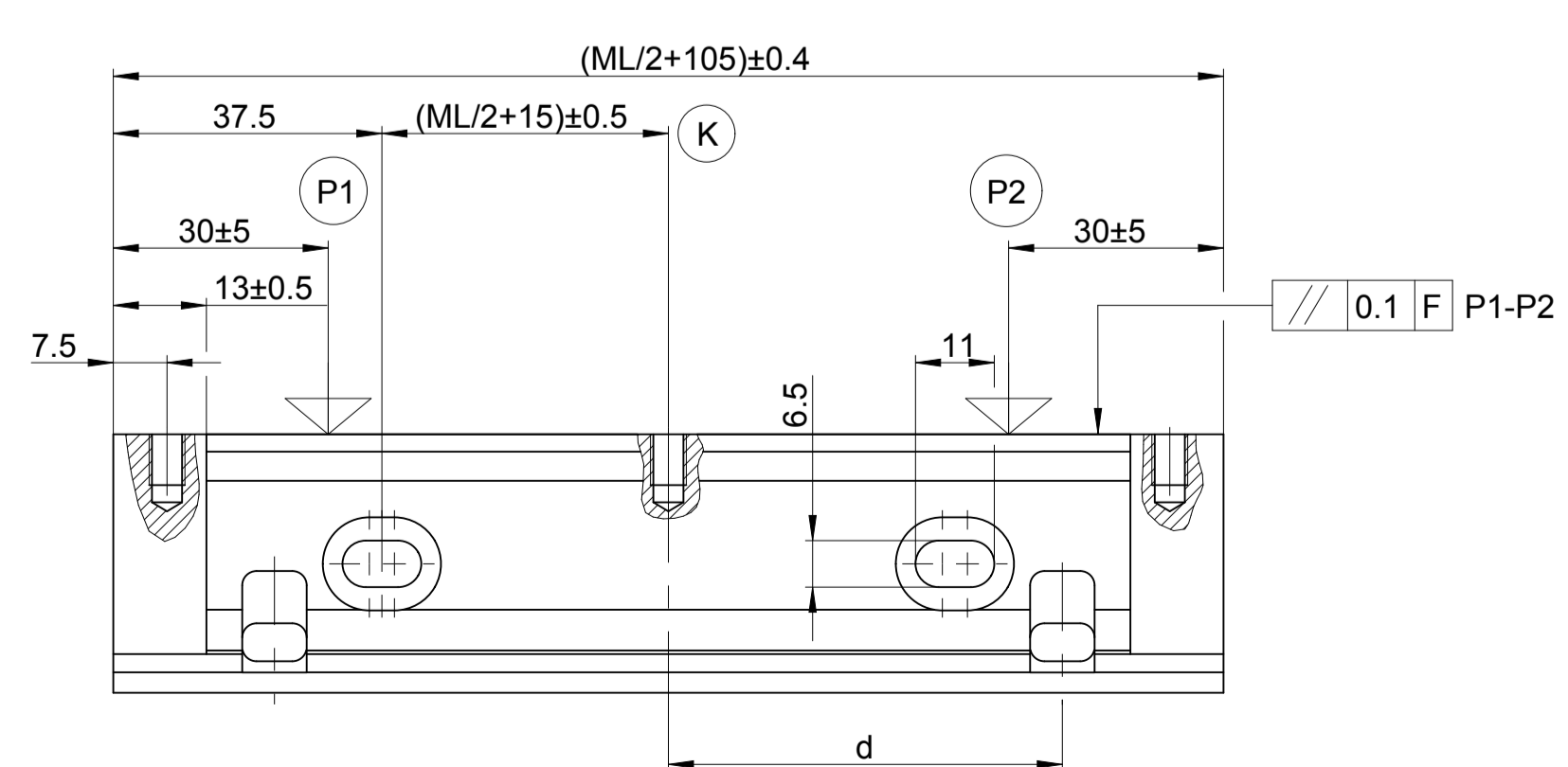
1050		515
300		140
250		115
200		75
180		75
150		75
140		55
100		40
85		40
55		55
50		55
25		40
2040	2020	1010
1840	1820	910
1740	1720	855
1640	1620	810
1540	1520	760
1440	1420	710
1340	1320	655
1240	1220	610
1140	1120	555
1070	-	515
1020	1000	500
970	950	475
920	900	450
870	850	425
820	800	400
770	750	375
720	700	350
670	650	325
620	600	300
570	550	275
520	500	250
470	450	225
420	400	200
370	350	175
320	300	140
270	250	115
220	200	100
170	150	75
120	100	55
70	50	37.5



170 mm ≤ ML ≤ 220 mm (LC/LS)
150 mm ≤ ML ≤ 200 mm (LF)



70 mm ≤ ML ≤ 150 mm (LC/LS)
50 mm ≤ ML ≤ 130 mm (LF)



ML 25/50/55 mm (LC/LS)

ML ≤ 820 P1...P2 LC/LS
ML ≤ 800 P1...P2 LF
ML > 820 P1...P3 LC/LS
ML > 800 P1...P3 LF

⊗ K = Kundenseitige Anschlussmaße Required mating dimensions
P = Messpunkte zum Ausrichten Gauging point for alignment
F = Maschinenführung Machine guideway
ML = Messlänge Measuring length

ID number: 1146690-03			
Change No. C033545-15			
Phase: Serie			
Tolerierung nach DIN ISO 8015 Tolerances as per DIN ISO 8015			
Allgemeintol. ISO 2768-mH 36mm:±0.2 General tol. ISO 2768-mH 36mm:±0.2			
Original drawing	Scale	Format	Montageschiene
Dimensions in mm	1:1	A1	mounting spar
Anschlussmaße / Mounting Dimensions			Version Revision Sheet Page
The reproduction, distribution and utilization of this document as well as the communication of its contents to others without express authorization is prohibited. Offenders will be held liable for the payment of damages. All rights reserved in the event of the grant of a patent, utility model or design. (ISO 15015)			DR. JOHANNES HEIDENHAIN GmbH 83301 Traunreut, Germany
D 800615-04 - A-01			1 of 1