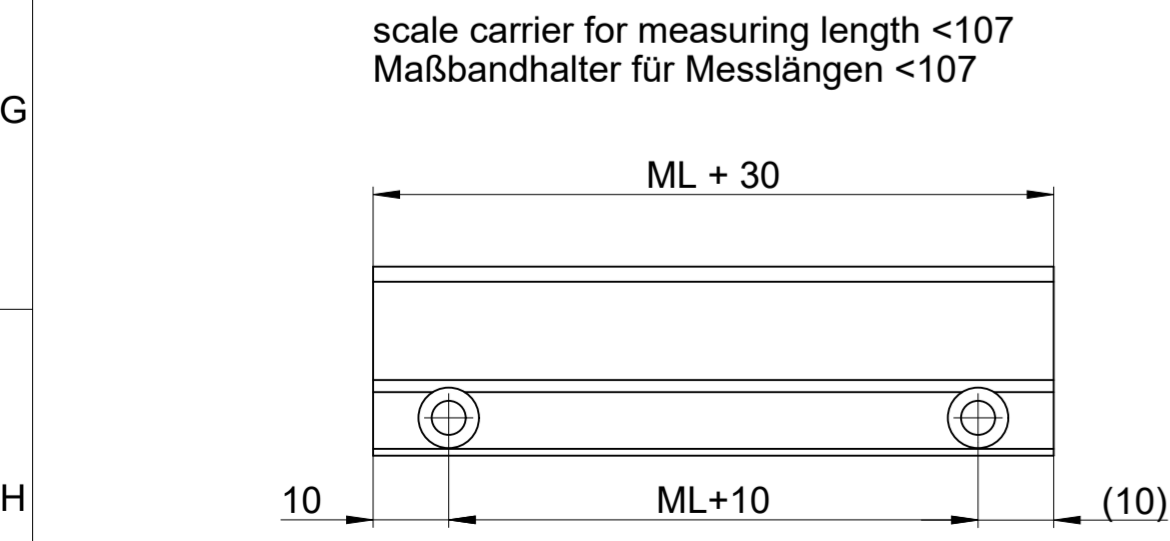
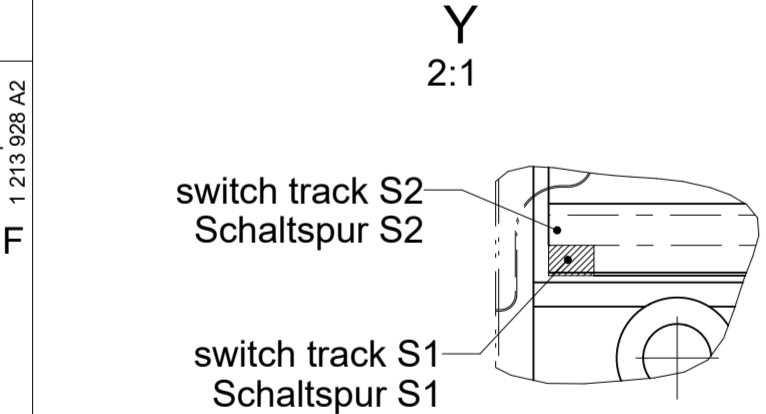
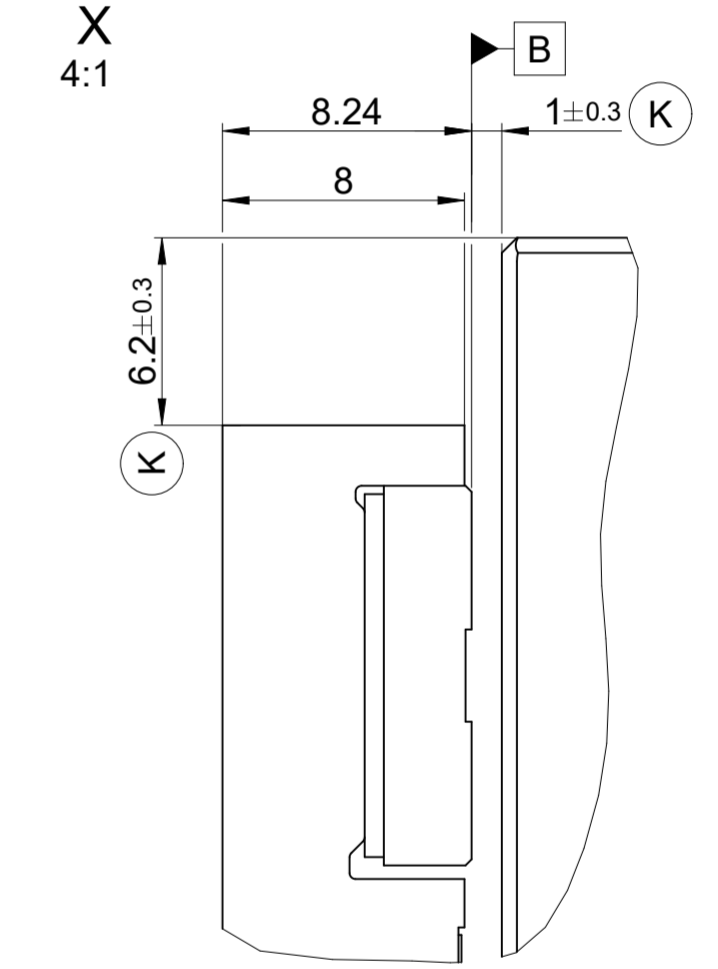
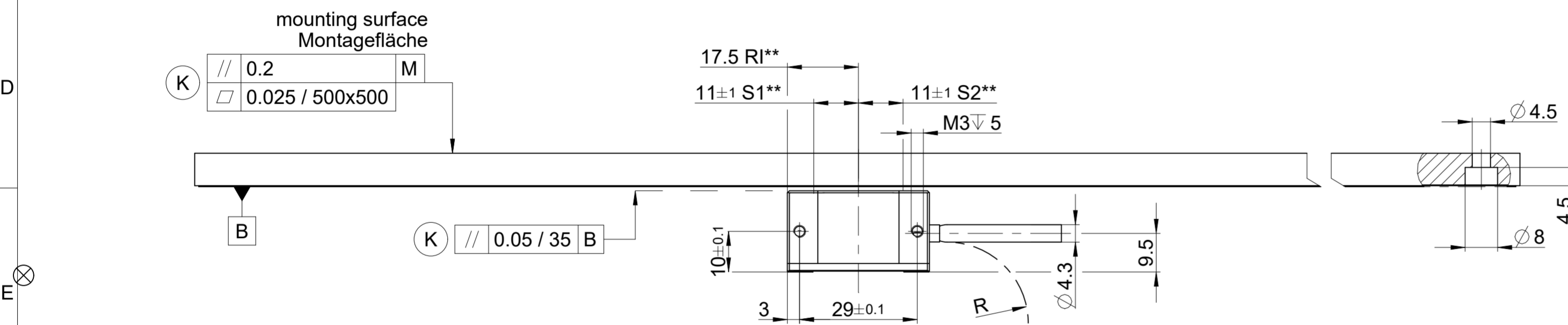
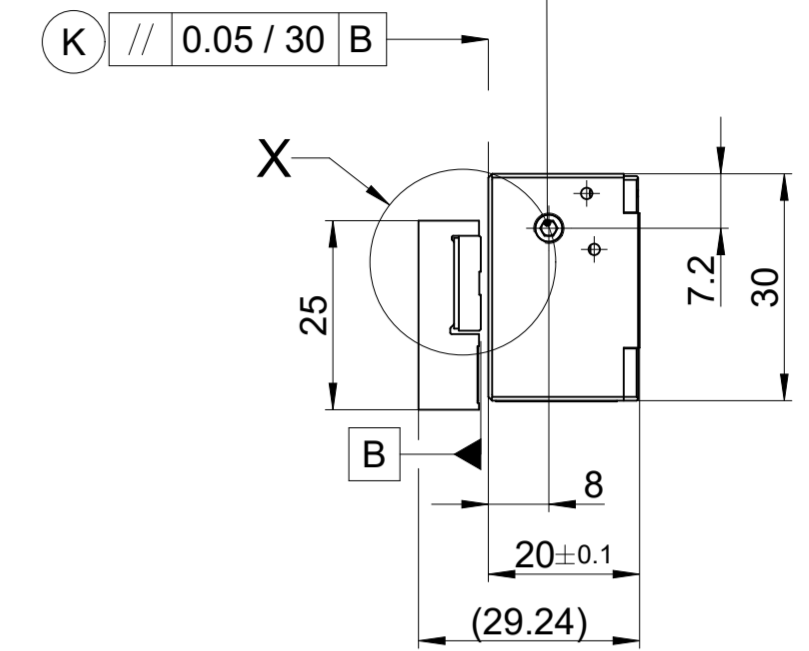


Moiré-adjustmentscrew
(allen set screw 2mm)
adjust to best signal

Moiré-Einstellschraube
(Innensechskant 2mm)
Einstellen auf optimales
Signal



- M = machine guideway / Maschinenführung
 - ML = measuring length / Messlänge
 - (S) = beginning of the measuring length / Beginn der Messlänge
 - ↔ = 0...ML
 - * = max. change in operation / max. Änderung bei Betrieb
 - C = cable / Anschlusskabel
 - (K) = customer mounting dimensions / kundenseitige Anbaumaße
 - k = any position of reference mark / beliebige Position der Referenzmarke
 - GA = glass scale in aluminum carrier / Glasmaßstab im Aluprofil
- Option:
- S1, S2 = switch signals / Schaltsignale
 - ** = sensor position / Sensorposition

Original drawing		MS82 GA		ID number: -
Scale		MS82 GA		Change No. C157360-15
Format		Anschlussmaße / Mating Dimensions		Phase: Serie
Dimensions in mm		1:1 A2		Tolerances as per ISO 8015
				General Tolerances ISO 2768:1989-mH ≤ 6:±0.2
The reproduction, distribution and utilization of this document as well as the communication of its contents to others without express authorization is prohibited. Offenders will be held liable for the payment of damages. All rights reserved in the event of the grant of a patent, utility model or design. (ISO 16016)				
Released		Version	Revision	Sheet
		D 753854-01-A-01		Page 1 of 1
www.rsfelektronik.at		Document number		