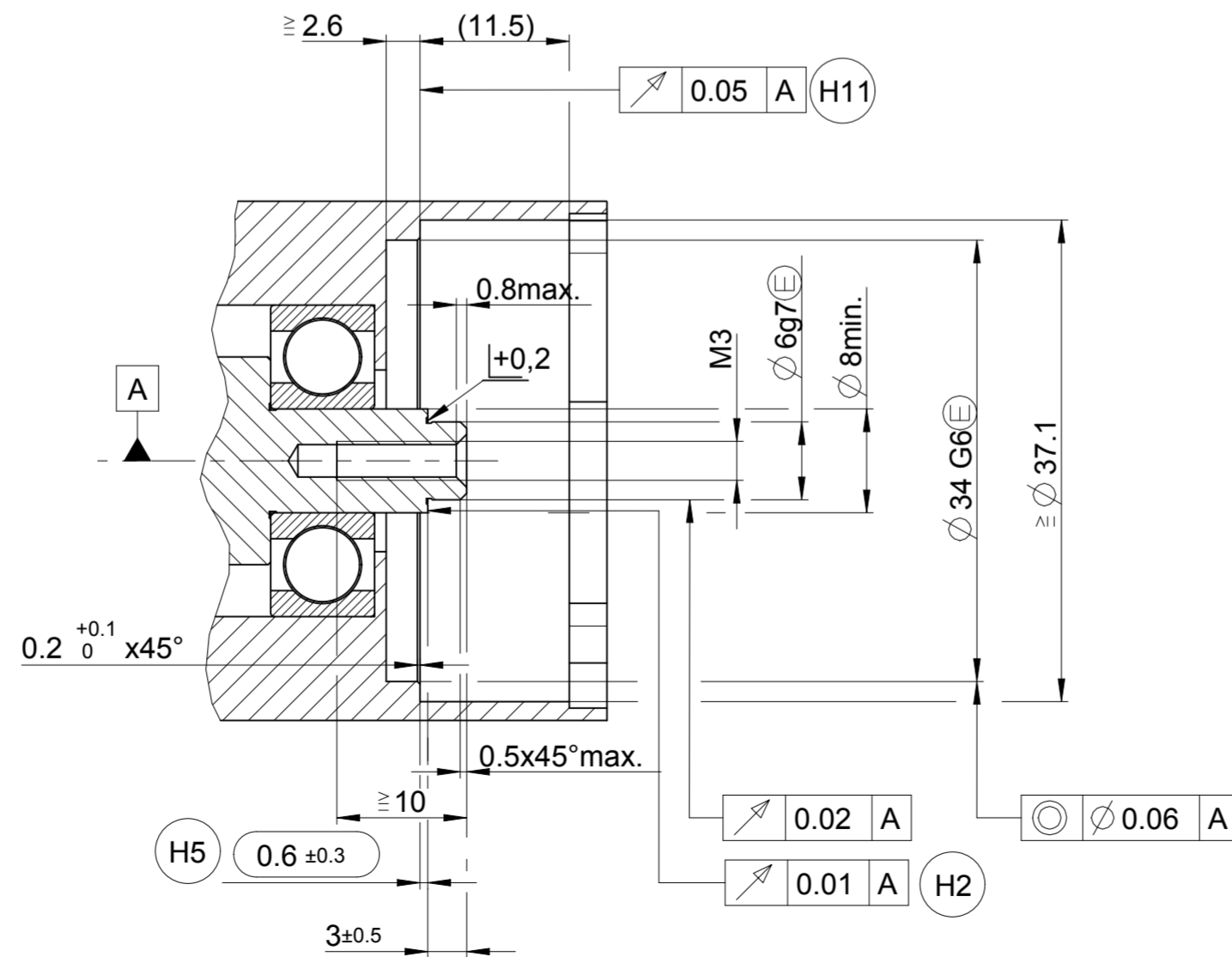
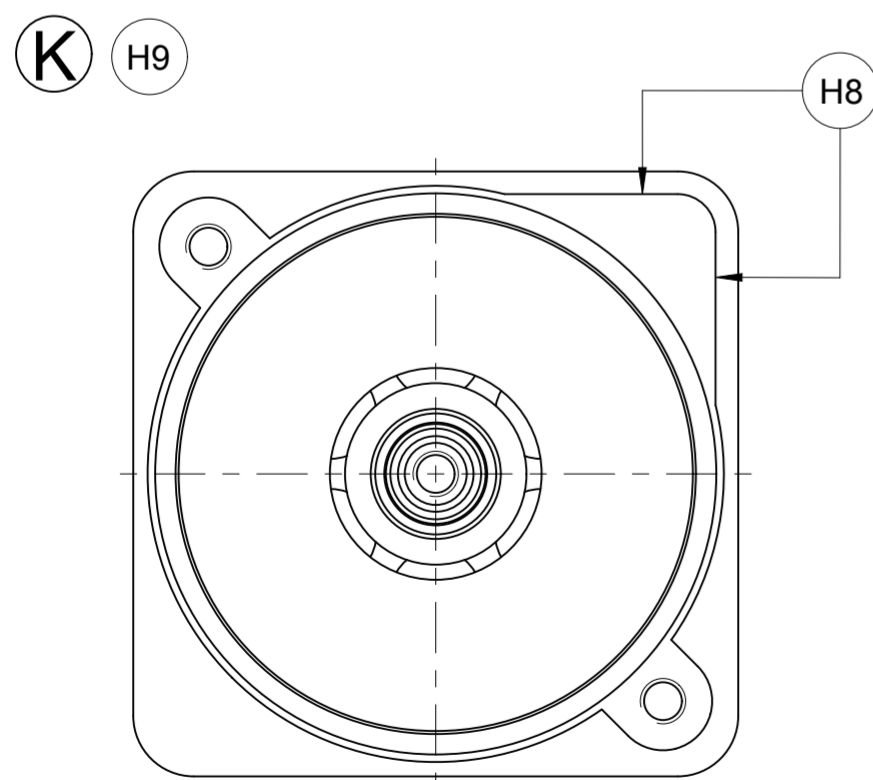
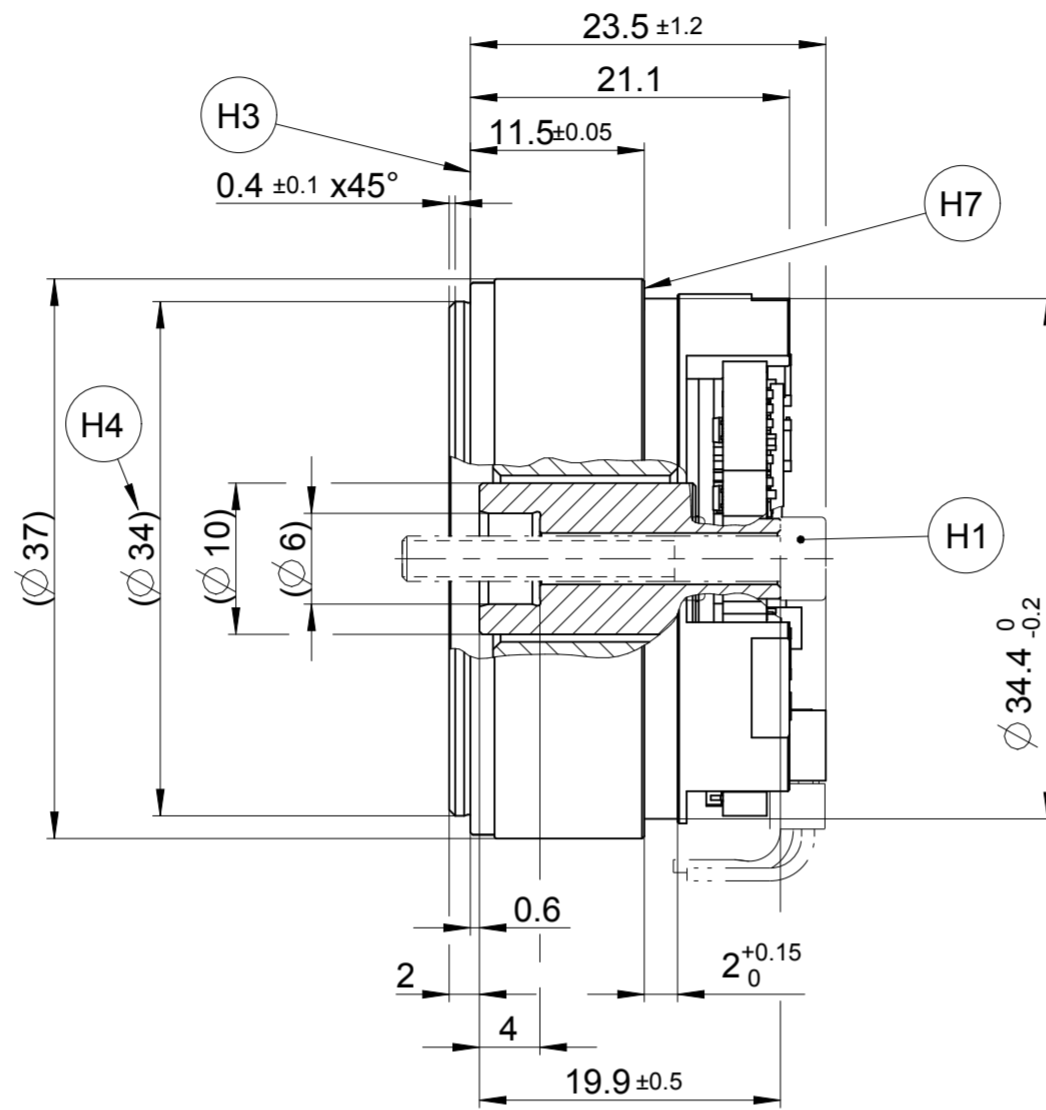
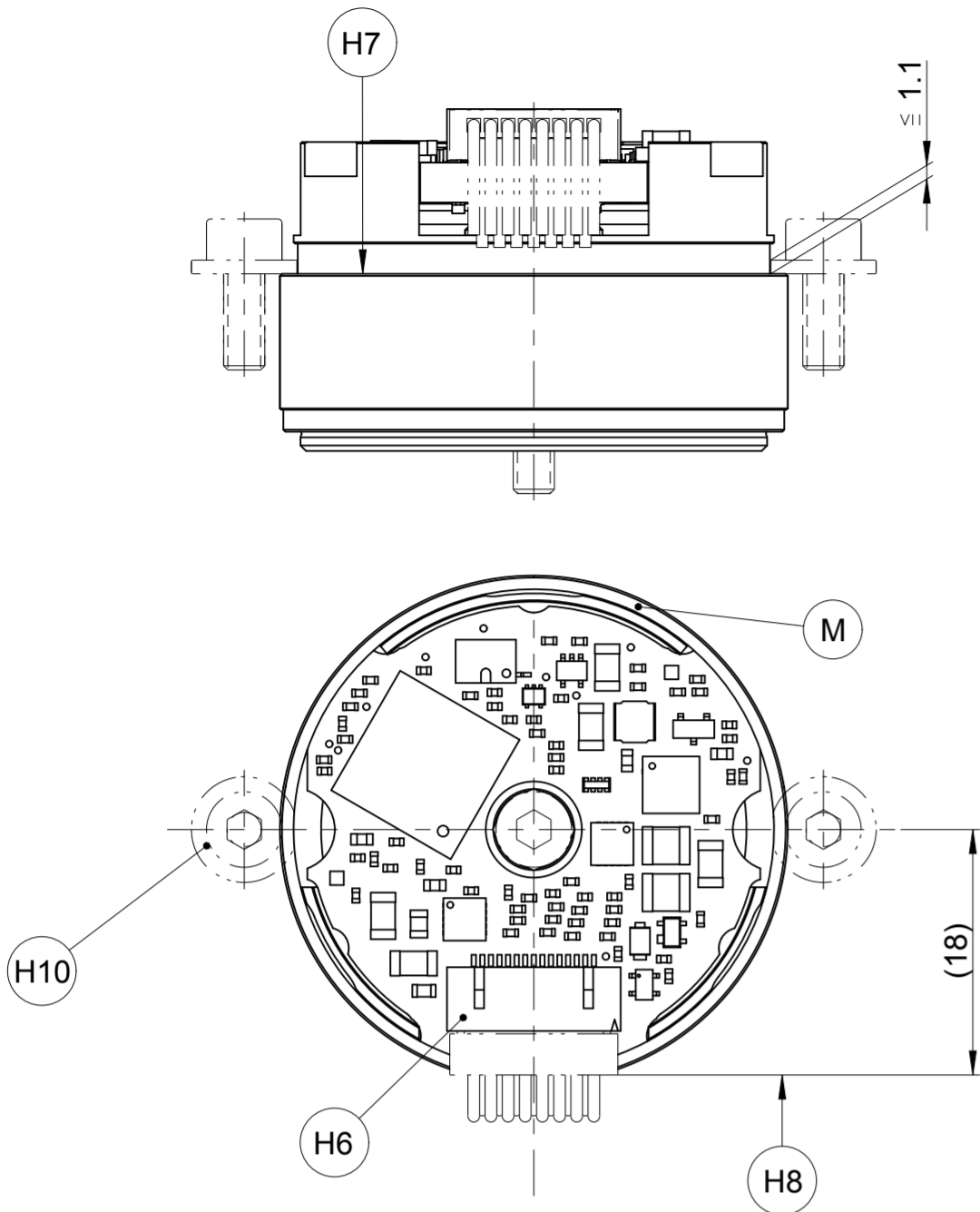


- A** = Lagerung Kundenwelle
Bearing for customer shaft
- K** = Kundenseitige Anschlussmaße
Required mating dimensions
- M** = Messpunkt Arbeitstemperatur
Operating temperature measuring point
- H1** = Selbstsichernde Schraube M3x25 DIN EN ISO 4762 SW 2,5
Anzugsmoment $1,2 \pm 0,1$ Nm
Set locking screw M3x25 DIN EN ISO 4762 SW 2,5
torque $1,2 \pm 0,1$ Nm
- H2** = Wellenanlage; Ganzflächige Auflage beachten!
Shaft surface ; Full bearing surface!
- H3** = Auflagefläche Stator
bearing surface stator
- H4** = Zentrierbund
Centering collar
- H5** = Maximal zulässige Abweichung zwischen Wellenanlage
und Auflagefläche Stator bei Montage und Betrieb
Maximum permissible deviation between shaft surface
and bearing surface stator during mounting and operating
- H6** = Stiftleiste 15-polig
15-polig pin connector
- H7** = Klemmfläche
Clamping surface
- H8** = Bauraum für Kabel beachten
Note the space required for cable
- H9** = Falls Anbaukompatibilität zu ExN 11xx erforderlich,
siehe kundenseitige Anschlussmaße D634726
If mounting compatibility to the ExN 11xx is required,
please refer to D634726 for mating dimensions
- H10** = Selbstsichernde Schraube M3x20 DIN EN ISO 4762 SW2,5
Anzugsmoment $1,2 \pm 0,1$ Nm
Set locking screw M3x20 DIN EN ISO 4762 SW2,5
Torque $1,2 \pm 0,1$ Nm
- H11** = Ganzflächige Auflage beachten!
Full bearing surface



82A		68K		R	
WELLA1		FLANA1		RIANA1	
ID number:					
Change No. C077573-05					
Phase: Serie					
Tolerierung nach DIN ISO 8015					
Allgemeintol. ISO 2768-mH $\pm 0,2$ mm					
General tol. ISO 2768-mH $\pm 0,2$ mm					
Anschlussmaße / Mating Dimensions					
The reproduction, distribution and utilization of this document as well as the communication of its contents to others without express authorization is prohibited. Offenders will be held liable for the payment of damages. All rights reserved in the event of the grant of a patent, utility model or design. (ISO 16016)					
HEIDENHAIN					
DR. JOHANNES HEIDENHAIN GmbH					
83301 Traunreut, Germany					
Version Revision Sheet Page					
D 737281-05-A-01					
Document number					
1 of 1					