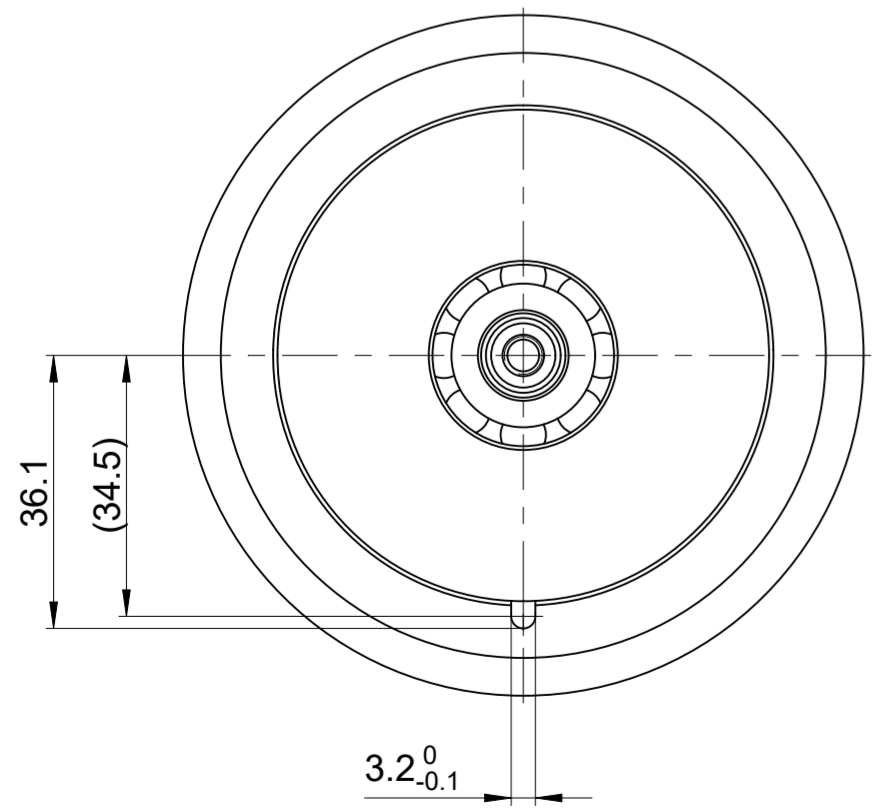
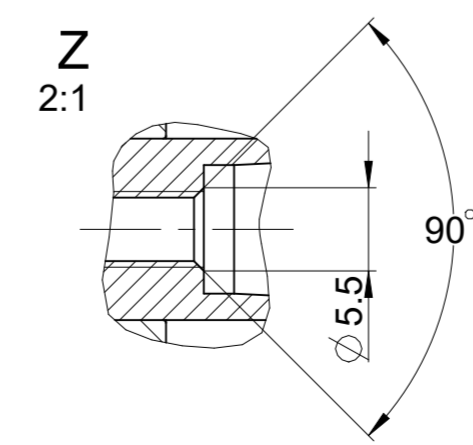
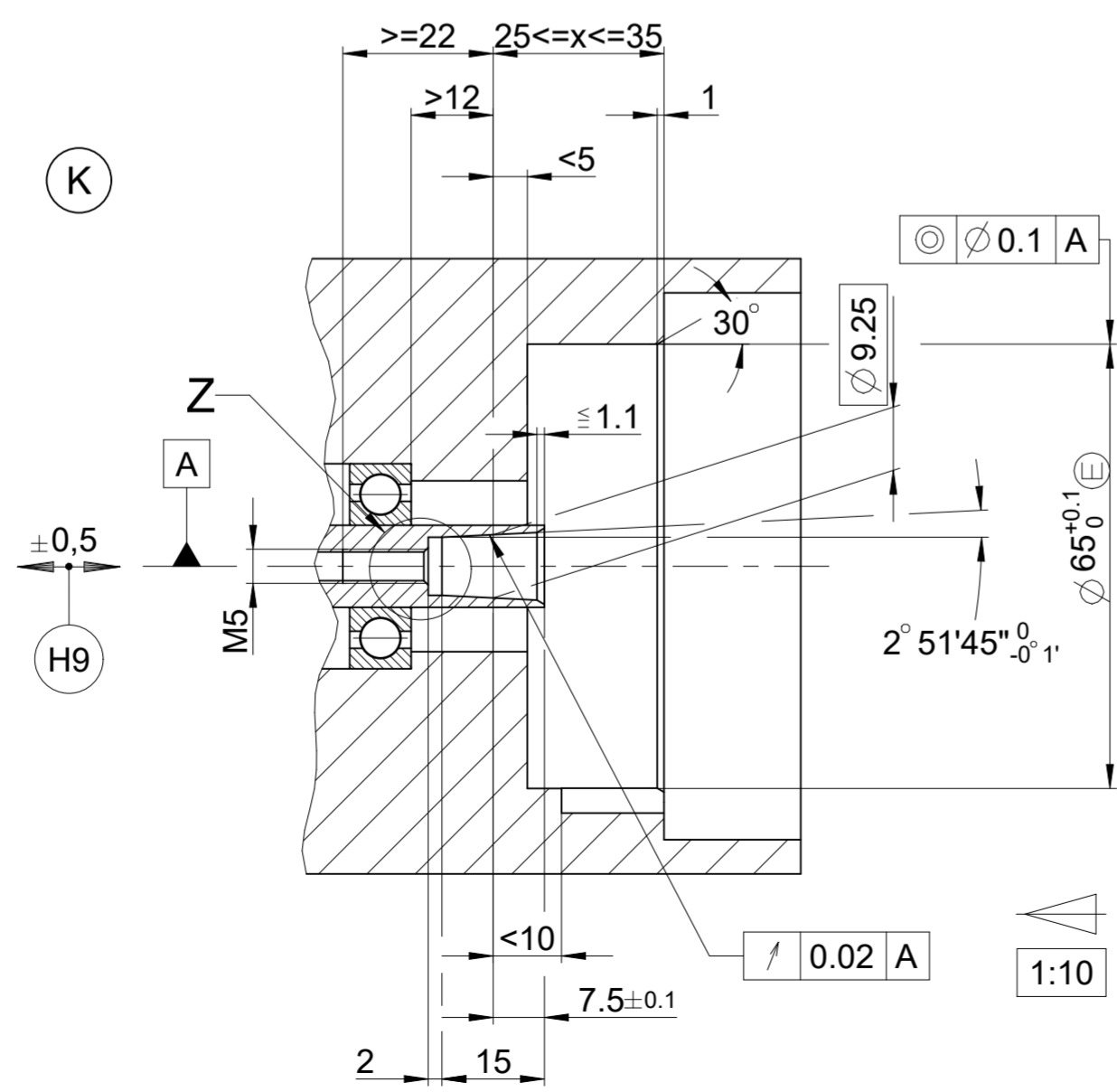


- A** = Lagerung Kundenwelle
Bearings for customer shaft
- K** = Kundenseitige Anschlußmaße
Required mating dimensions
- M** = Meßpunkt Arbeitstemperatur
Operating temperature measuring point
- H1** = Klemmschraube für Kupplungsring - SW 2
Anzugsmoment 1,25 -0,2 Nm
Locking screw for coupling ring - SW 2
torque 1,25 -0,2 Nm
- H2** = ERN Stiftleiste 12-pol.
ERN mit Z1-Spur Stiftleiste 14-pol.
ECN/EQN Stiftleiste 12-pol.
ECN/EQN Stiftleiste 12-pol. + 4-pol.
ERN 12-pin connector
ERN with Z1-track 14-pin connector
ECN/EQN 12-pin connector
ECN/EQN plug connector 12-pin + 4-pin
- H3** = Gußdeckel
Die-cast cover
- H4** = Zylinderschraube
DIN 6912 - M5 x 50 - 08.8 - MK
mit stoffschlüssiger Losdreh-sicherung
SW 4 - Anzugsmoment 5 +0,5 Nm
(nicht im Lieferumfang enthalten)
Cylinder head screw
DIN 6912 - M5 x 50 - 08.8 - MK
with materially bonding anti-rotation lock
SW 4 - torque 5 +0,5 Nm
(not included in delivery)
- H5** = Verschlussschraube SW3 und 4
Anzugsmoment 5 +0,5 Nm
Locking screw SW3 and 4
torque 5 +0,5 Nm
- H6** = Befestigung für Kabel
mit Crimp-Hülse $\phi 6 +0,3 \times 10$
Mounting for cable
with crimp barrel of $\phi 6 +0,3 \times 10$
- H7** = Abdrückgewinde M10
Back-off thread M10
- H8** = Abdrückgewinde M6
Back-off thread M6
- H9** = Ausgleich von Montagetoleranzen und thermischer
Ausdehnung, keine dynamische Bewegung
Compensation of mounting tolerances and
thermal expansion, no dynamic motion



65B	07B	37A/37D	WELLA1 KUPPA1 FOKAA1	
Original drawing			ExN 13xx	
Scale			ExN 13xx	
Format			Anschlußmaße / Mating Dimensions	
Dimensions in mm	1:1	A2	Tolerances as per ISO 8015	
The reproduction, distribution and utilization of this document as well as the communication of its contents to others without express authorization is prohibited. Offenders will be held liable for the payment of damages. All rights reserved in the event of the grant of a patent, utility model or design. (ISO 16016)			General Tolerances ISO 2768:1989-mH $\pm 6\text{mm} \pm 0.2$	
Released		Version	Revision	Sheet
30.10.2023		D 735268-03 - A-01		Page 1 of 1
HEIDENHAIN DR. JOHANNES HEIDENHAIN GmbH 83301 Traunreut, Germany				

896 200 A2