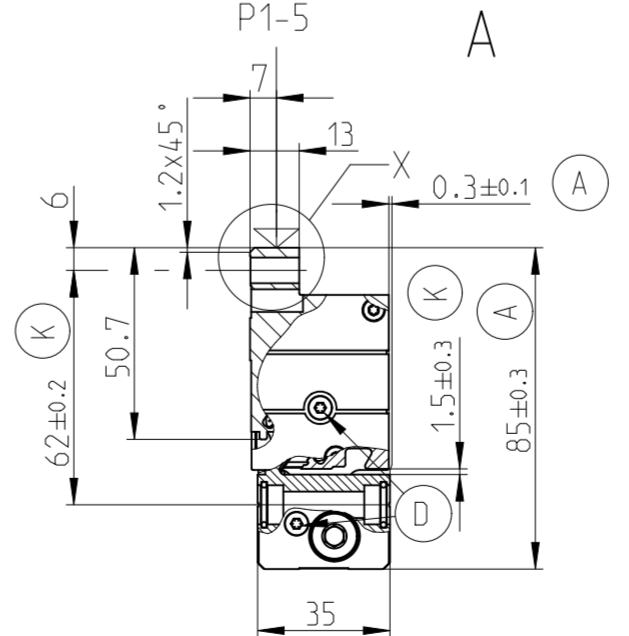
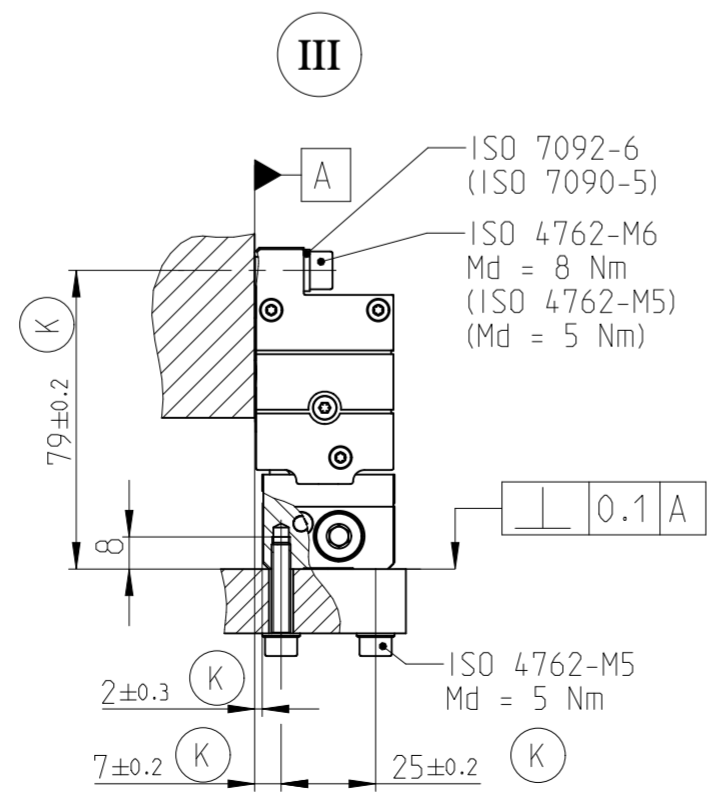
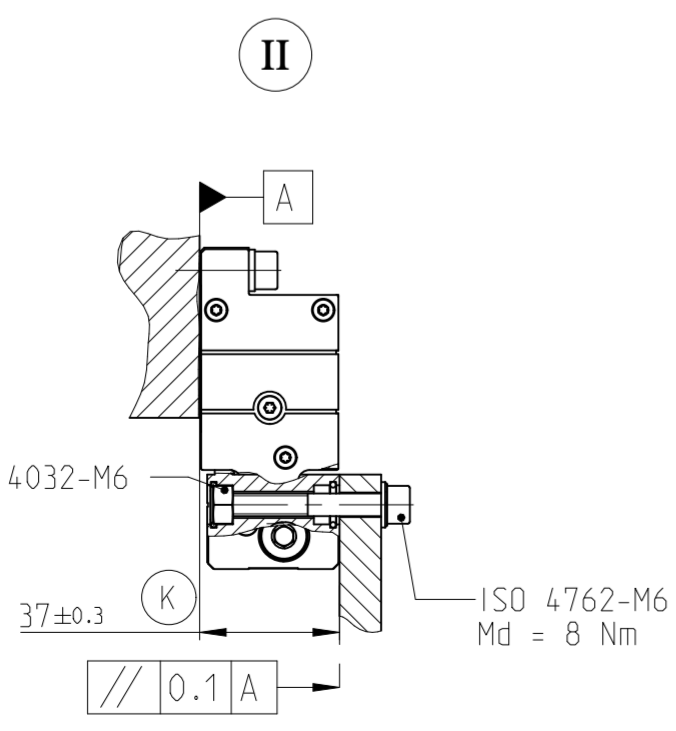
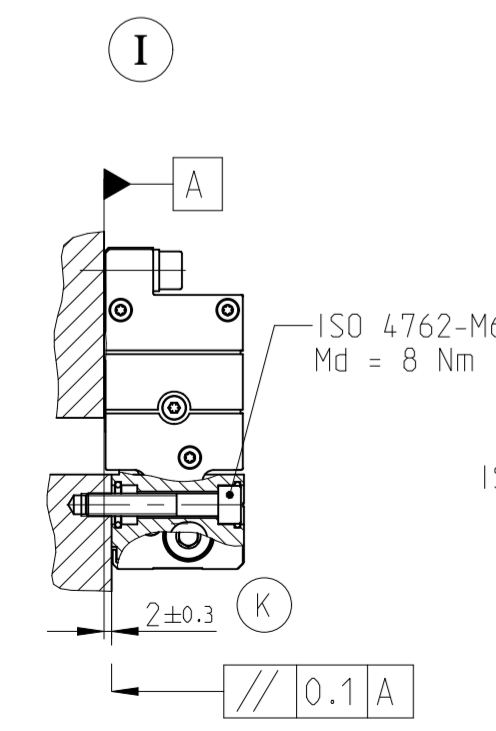
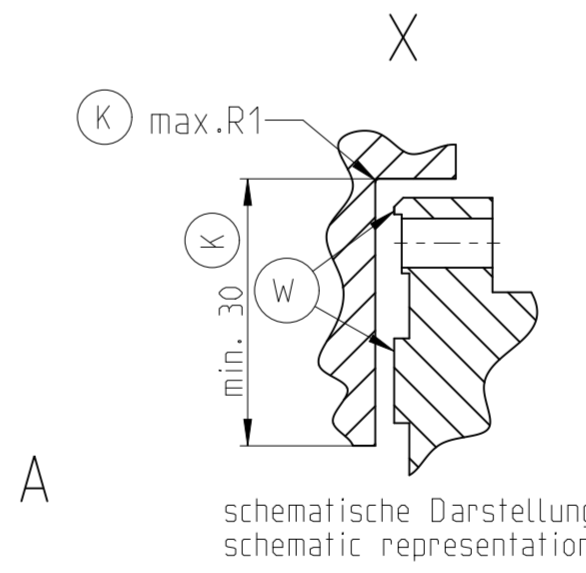


- I II III** = Montagemöglichkeiten
 = Mounting options
- F = Maschinenführung
 = Machine guideway
- P = Messpunkte zum Ausrichten
 = Gauging points for alignment
- K** = Kundenseitiges Anschlussmaß
 = Required mating dimensions
- A** = Alternatives kundenseitiges Anschlussmaß
 = Alternative mating dimensions
- B** = Kabelanschluss
 = Cable connection usable at either end
- D** = Druckluftanschluss (LC 1x6: mit integrierter Drossel)
 = Compressed air inlet (LC 1x6: with integrated throttle)
- T** = Mechanischer Fixpunkt, bevorzugt verwenden
 = Mechanical fixed point (to be preferred)
- H** = Mechanischer Fixpunkt kompatibel zu Vorgängergeräten
 = Mechanical fixed point, compatible to predecessor model
- G** = Mechanischer Fixpunkt im 100mm Raster
 = Mechanical fixed point (coincides with the spacing interval of 100mm)
- W** = Anlageflächen
 = Mating surfaces
- S** = Beginn der Messlänge ML (=20mm absolut)
 = Beginning of measuring length ML (=20mm absolute)
- ML = Messlänge
 = Measuring length
- ➔ = Bewegungsrichtung der Abtasteinheit für Ausgangssignal gemäß Schnittstellen-Beschreibung
 = Direction of scanning unit motion for output signals in accordance with interface description

- I II III** = Mounting options
- F = Machine guideway
- P = Gauging points for alignment
- K** = Required mating dimensions
- A** = Alternative mating dimensions
- B** = Cable connection usable at either end
- D** = Compressed air inlet (LC 1x6: with integrated throttle)
- T** = Mechanical fixed point (to be preferred)
- H** = Mechanical fixed point, compatible to predecessor model
- G** = Mechanical fixed point (coincides with the spacing interval of 100mm)
- W** = Mating surfaces
- S** = Beginning of measuring length ML (=20mm absolute)
- ML = Measuring length
- ➔ = Direction of scanning unit motion for output signals in accordance with interface description



ML	P	
840	P1,P2	Punkte gleichmäßig entlang des Profils verteilt Points uniformly distributed along the profile
1740	P1,P2,P3	
3040	P1,P2,P3,P4	
4240	P1,P2,P3,P4,P5	

Original drawing		Scale		Format		ID number:	
1:2		A2		LC 1x5 / LC 1x6		Change No. C115827-8	
Dimensions in mm		Anschlussmaße / Mating Dimensions		LC 1x5 / LC 1x6		Phase: Serie	
Tolerances as per ISO 8015		General Tolerances ISO 2768:1989-mH		±0.2		Tolerances as per ISO 8015	
Released		Version		Revision		Sheet	
01.12.2021		D 732386-03-B-01		1		Page	
DR. JOHANNES HEIDENHAIN GmbH		83301 Traunreut, Germany		Document number		1 of 1	

896 200 A2