

A = Bearing.

M = Measuring point for operating temperature.

K = Required mating dimensions.

H1 = 2x screw, M3x3mm, ISO 4029, ID 685222-14  
Width A/F 1.5, Tightening torque  $0.6 \pm 0.1$  Nm,

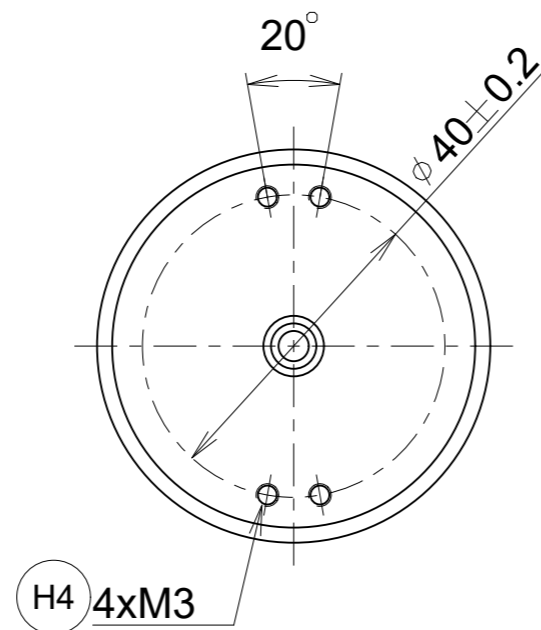
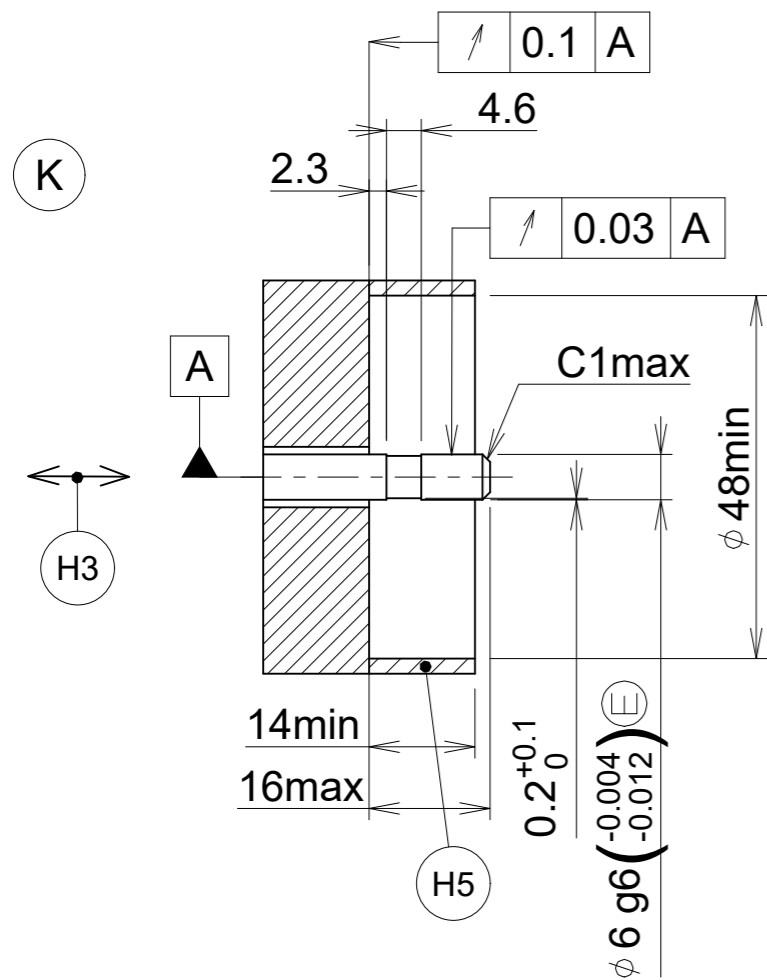
H2 = Reference mark position  $\pm 10^\circ$

H3 = Compensation of mounting tolerance and thermal expansion no dynamic motion permitted.

H4 = e.g. 4x screw, M3x5mm, ISO 4762 8.8 MKL  
Width A/F 2.5, Tightening torque  $1.0 \pm 0.1$  Nm  
4x washer ISO 7092-3-200HV-A2

H5 = Ensure protection against accidental contact in accordance with EN 60529.

= Direction of shaft rotation for output signals as per the interface description.



1NA	68A	49A
WELLA1	KUPPA1	FOKAA1

Original drawing		ID number:	
Scale	Format	Change No.	C183986-40
Dimensions in mm	1/1 A3	Phase:	Serial production
ERN 1023		Tolerances as per ISO 8015	
Mating Dimensions		General Tolerances ISO 2768:1989-mH $\leq 6$ mm: $\pm 0.2$	
The reproduction, distribution and utilization of this document as well as the communication of its contents to others without express authorization is prohibited. Offenders will be held liable for the payment of damages. All rights reserved in the event of the grant of a patent, utility model or design. (ISO 16016)			
<b>HEIDENHAIN</b>		Released	Version   Revision   Sheet   Page
		D 684703-02-A-01	
		Document number	

1 458 966 A3