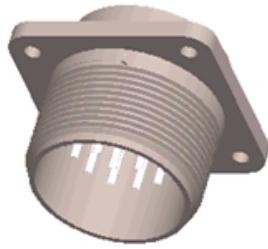


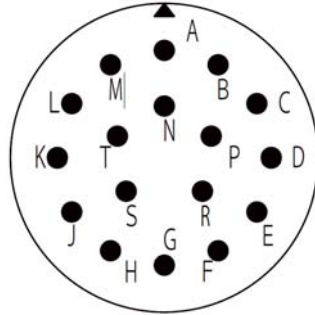
Output Signal: TTL
 Connection: Flange Socket

Connection Layout: **AY**
 Electrical Connection: 4IS17



Connection
 Geometry
 (plug side):

140



Pin number	Symbol		Signal		Full name
ピン番号	記号		信号		
A	Ua1	(A)	Incremental	インクリメンタル	Square-wave signal Ua1
B	Ua0	(Z)	Reference	原点信号	Square-wave signal Ua0
C	Ua2	(B)	Incremental	インクリメンタル	Square-wave signal Ua2
H	Up	(+Vcc)	Supply +V (Up)	供給電源(+)	Supply +V (Up)
K	0V	0V	Supply 0V (Un)	供給電源(-)	Supply 0V (Un)
N	$\overline{\text{Ua1}}$	$\overline{\text{(A)}}$	Incremental	インクリメンタル	Square-wave signal Ua1 inverse
P	$\overline{\text{Ua0}}$	$\overline{\text{(Z)}}$	Reference	原点信号	Square-wave signal Ua0 inverse
R	$\overline{\text{Ua2}}$	$\overline{\text{(B)}}$	Incremental	インクリメンタル	Square-wave signal Ua2 inverse
F	Sensor Up		Supply +V (sensor line)	センサ Up	Supply +V (sensor line)
M	Sensor 0V		Supply 0V (sensor line)	センサ 0V	Supply 0V (sensor line)
S	$\overline{\text{UaS}}$		fault detection signal	アラーム信号	Square-wave signal UaS inverse
Flange, housing			External Shield		External Shield
D,E,G,J,L,T	--	--	Vacant Pins		

* Vacant pins or wires must not be used!

Connection layout AY 4IS17 TTL			Pin Layout		Change No: C029247-15
The reproduction, distribution and utilization of this document as well as the communication of its contents to others without express authorization is prohibited. Offenders will be held liable for the payment of damages. All rights reserved in the event of the grant of a patent, utility model or design.					
HEIDENHAIN DR. JOHANNES HEIDENHAIN GmbH 83301 Traunreut, Germany			Serial production	Version	Revision
			D651828	- 00	- A - 01
			Document No		Page 1/1