

clamping screw M2  
Spannschraube M2

L = bearing  
L = Lagerung

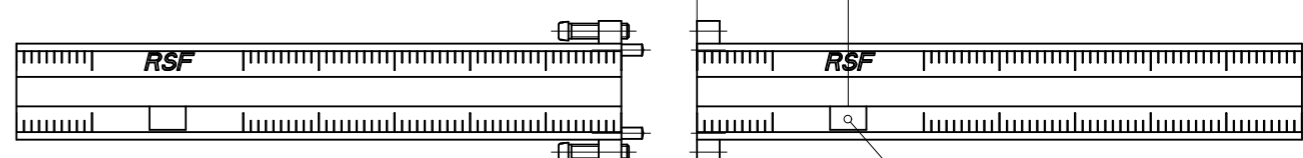
D = shaft diameter  
D = Wellendurchmesser

j = additional reference marks separated by n x 100mm  
j = zusätzliche Referenzmarken im Abstand von n x 100mm

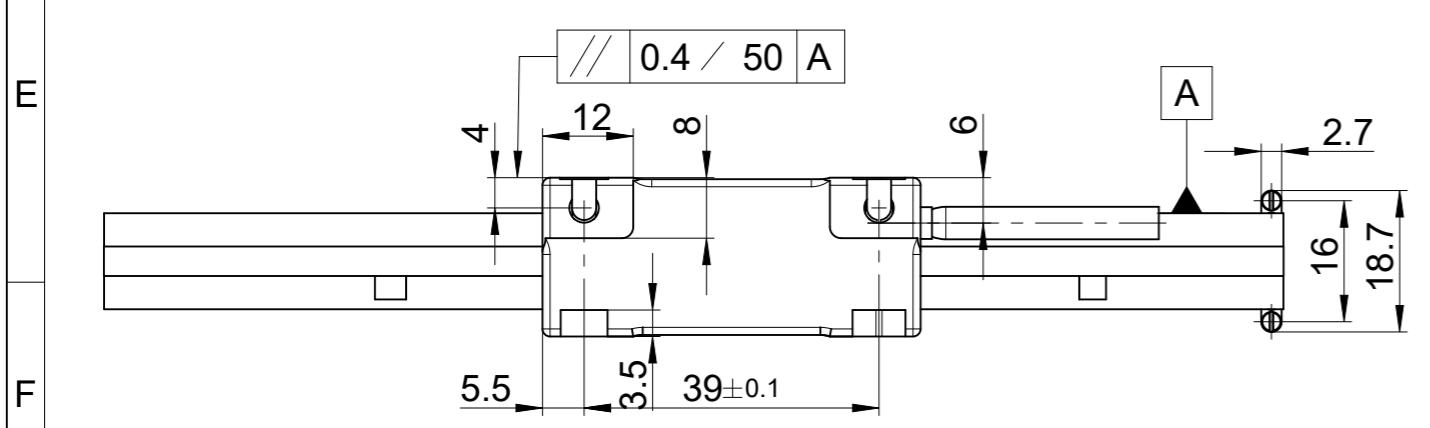
\*\* D <  $\varnothing 500 = +0,2\text{mm}/-0,1\text{mm}$   
\*\* D  $\geq \varnothing 500 = +0,4\text{mm}/-0,2\text{mm}$

3 steel measuring tape with elastic layer  
Stahlmaßband mit elastischer Schicht

representation stretched  
Darstellung gestreckt



reference mark  
Referenzmarke



Original drawing		ID number:	
Scale	Format	Change No.	C157360-25
Dimensions in mm	1:1 A3	Phase:	Serie
MSR45 MER MSR45 MER Anschlussmaße / Mating Dimensions		Tolerances as per ISO 8015	
		General Tolerances ISO 2768:1989-mH $\leq 6 \pm 0.2$	
The reproduction, distribution and utilization of this document as well as the communication of its contents to others without express authorization is prohibited. Offenders will be held liable for the payment of damages. All rights reserved in the event of the grant of a patent, utility model or design. ( ISO 16016 )			
Released		Version	Revision
		Sheet	Page
29.02.2024		D 643074-01 - B-01	
www.rsf.at		Document number	

**RSF Elektronik**  
www.rsf.at

1 213 928 A3

1 2 3 4