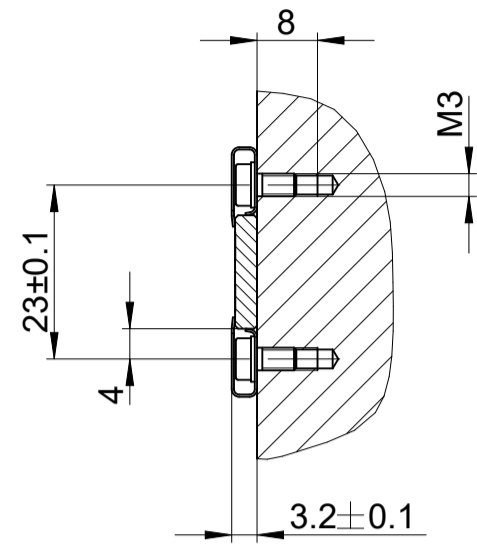
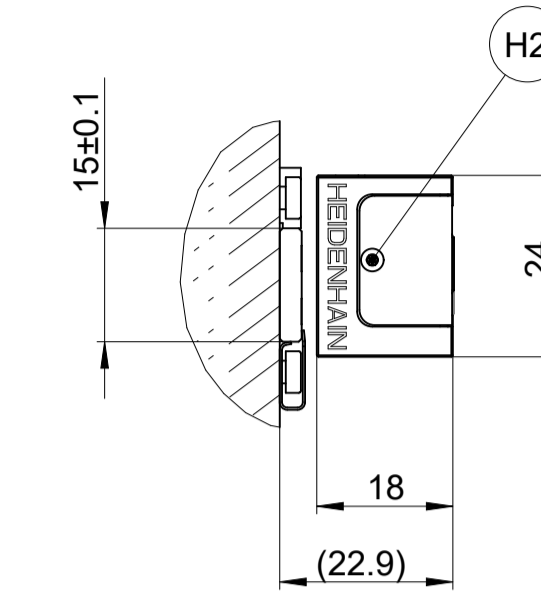
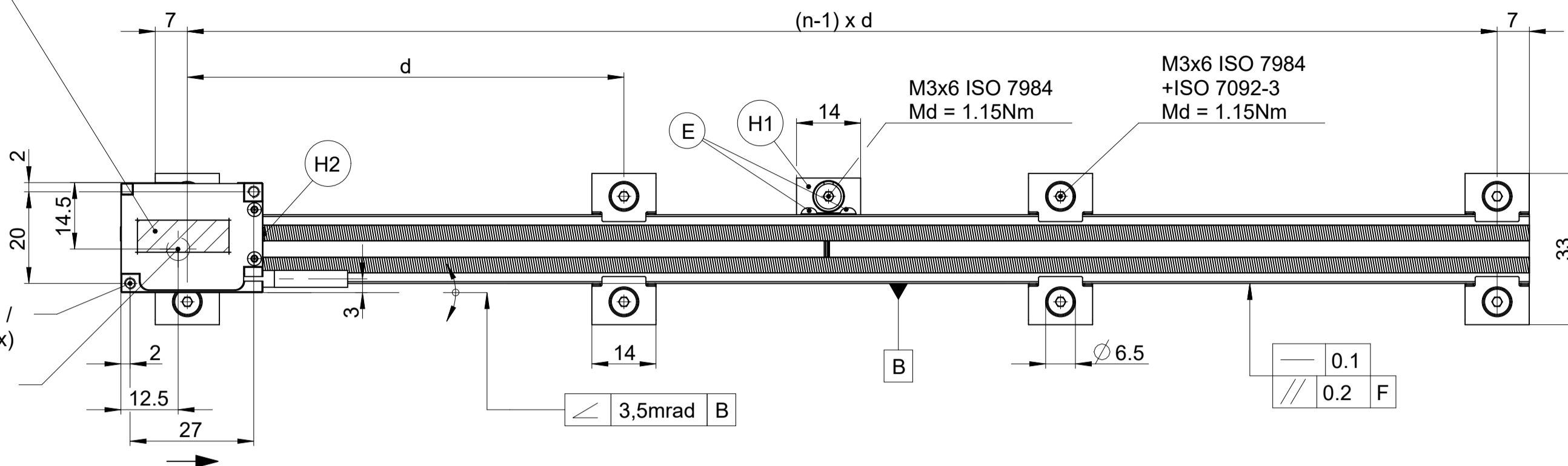


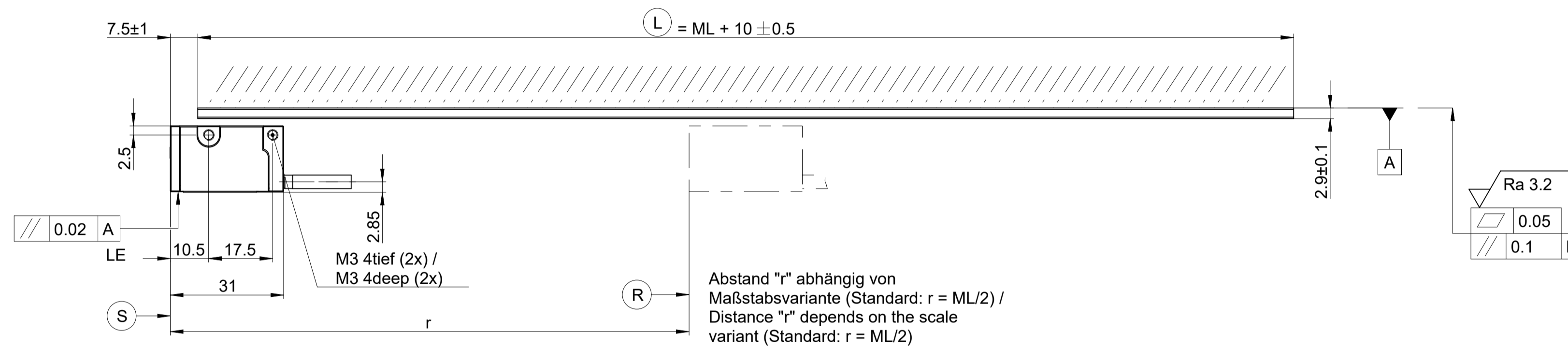
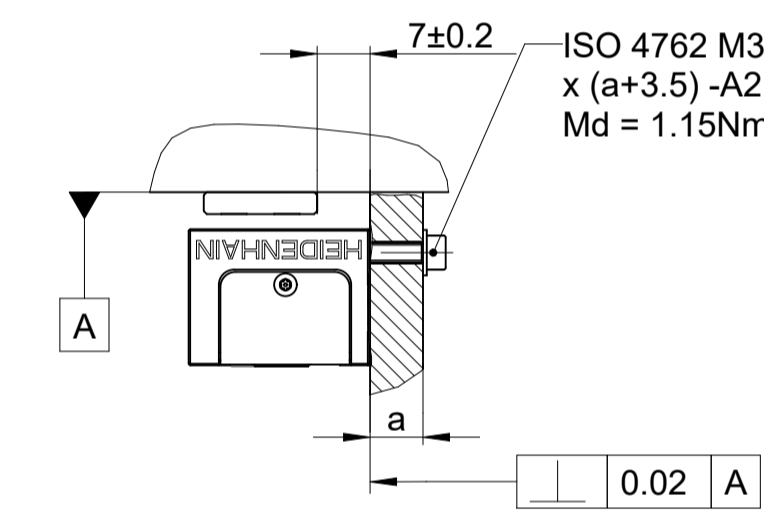
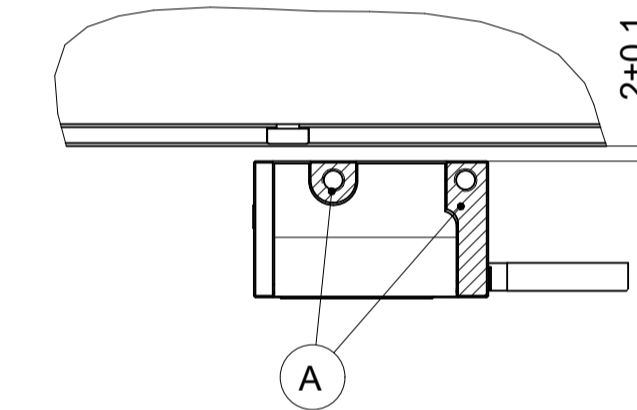
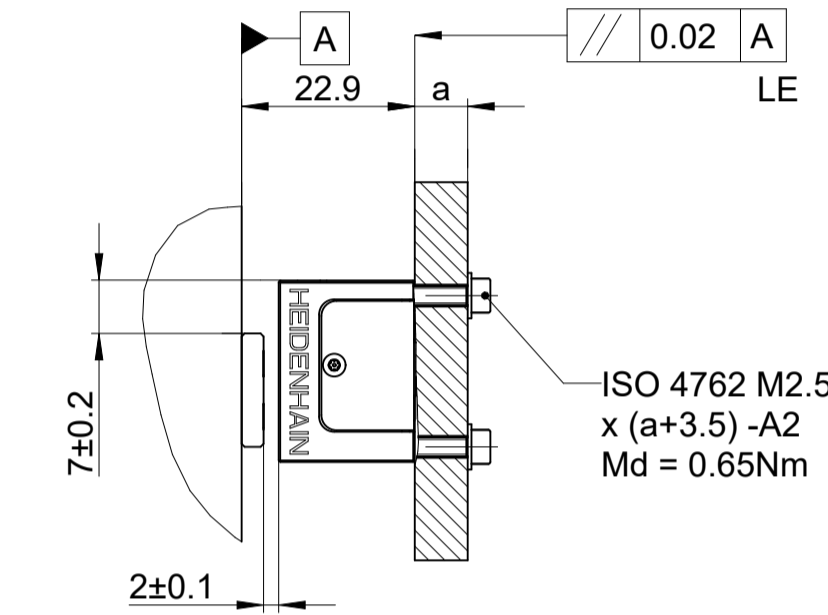
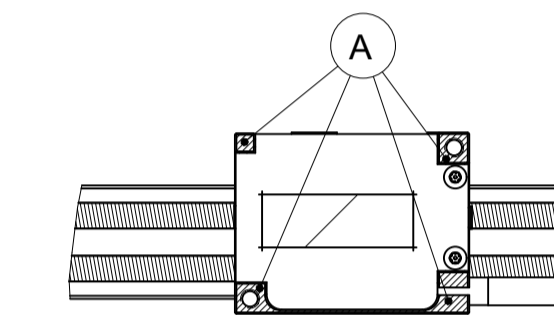
Deckelprägung mit Überstand max. 0,4mm
(wird bei Anbau von oben eingefedert) /
Flexible cover protrudes partially by max. 0.4mm,
is pressed in when the top side is secured



M2,5 4tief (2x) /
M2,5 4deep (2x)
optische Mitte
optical center

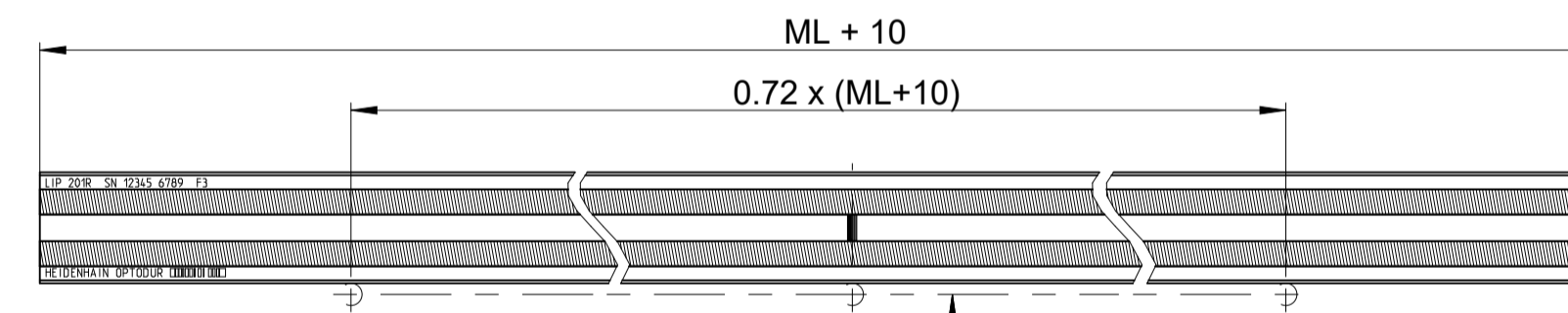


Anbaumöglichkeiten Abtastkopf /
Mounting options encoder head



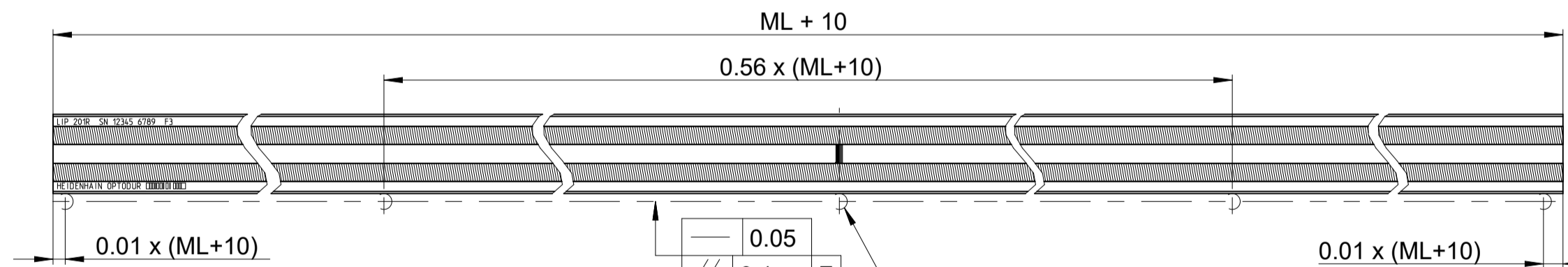
Abstand "r" abhängig von
Maßstabsvariante (Standard: r = ML/2) /
Distance "r" depends on the scale
variant (Standard: r = ML/2)

ML ≤ 2040



Position Anschlagstifte
Position stop pins

ML > 2040



Empfehlung / Recommendation: Ø 3

F = Maschinenführung

Machine guideway

R = Referenzmarken-Lage

Reference mark position

L = Maßstablänge

Scale length

S = Beginn der Messlänge ML

Beginning of measuring length

E = Klebstoff gem. Montageanleitung

Adhesive as per the mounting instructions

H1 = Montageelement für Hartklebung zur
Definition des thermischen Fixpunktes

Mounting element for hard adhesive bond in
order to define the thermal fixed point

H2 = Überstand Schraubenkopf max. 0,5mm

Max. protrusion of screw head 0,5mm

A = Anbaufläche

Mounting surface

→ = Bewegungsrichtung des Abtastkopfs
für Ausgangssignale gemäß
Schnittstellen-Beschreibung

Positive direction of scanning head
movement for output signals in accordance
with interface description

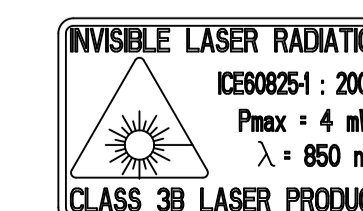
Anzahl "n" der Spannpratzenpaare:
(Montage beidseitig geprätzt) /
Quantity "n" of pairs of fixing clamps
(mounting with fixing clamps at both sides)

ML	n
70 < ML ≤ 100	3
100 < ML ≤ 200	4
...	...

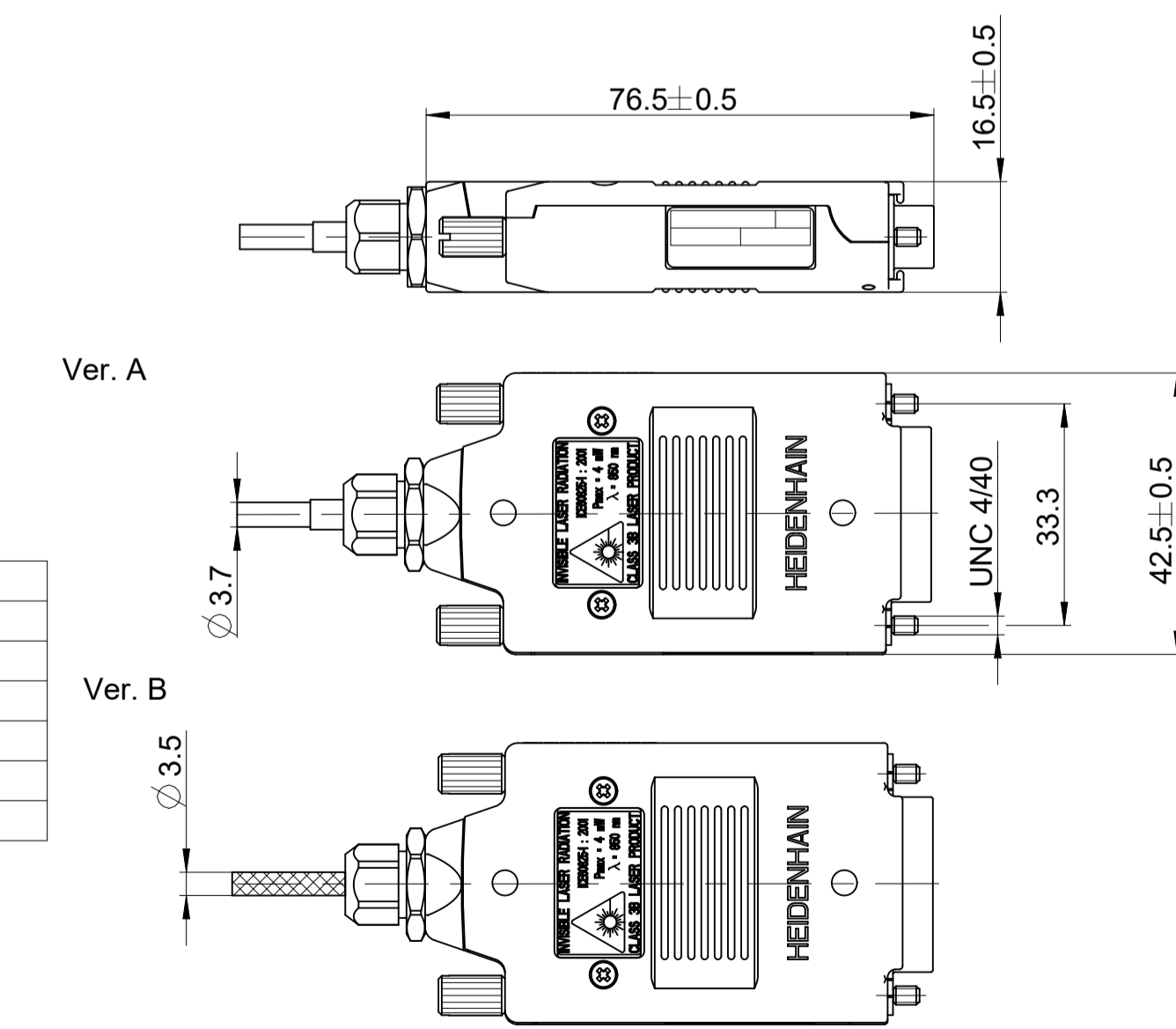
Abstand "d" der Spannpratzenpaare:
Distance "d" between pairs of fixing clamps:

$$d = \frac{ML - 4}{n - 1}$$

Electronics housing	ID number
Ver. A	1063024
Ver. A	1035059
Ver. B	1035058
Ver. A	1035051
Ver. B	814014
Ver. A	680600



2:1



Ver. A

Ver. B

Original drawing		ID number:	
Scale	Format	Change No.	C092017-05
1:1	A1	Phase:	Serie
Dimensions in mm		Tolerierung nach DIN ISO 8015 Tolerances as per DIN ISO 8015	
LIP 2x1 geprätzt LIP 2x1 clamped		Allgemeintol. ISO 2768-mH 36mm:±0.2 General tol. ISO 2768-mH 36mm:±0.2	
Anschlussmaße / Mating Dimensions		Version Revision Sheet Page	
The reproduction, distribution and utilization of this document as well as the communication of its contents to others without express authorization is prohibited. Offenders will be held liable for the payment of damages. All rights reserved in the event of the grant of a patent, utility model or design. (ISO 15015)		HEIDENHAIN DR. JOHANNES HEIDENHAIN GmbH 83301 Traunreut, Germany	
D 642560-02 - A-01		1 of 1	