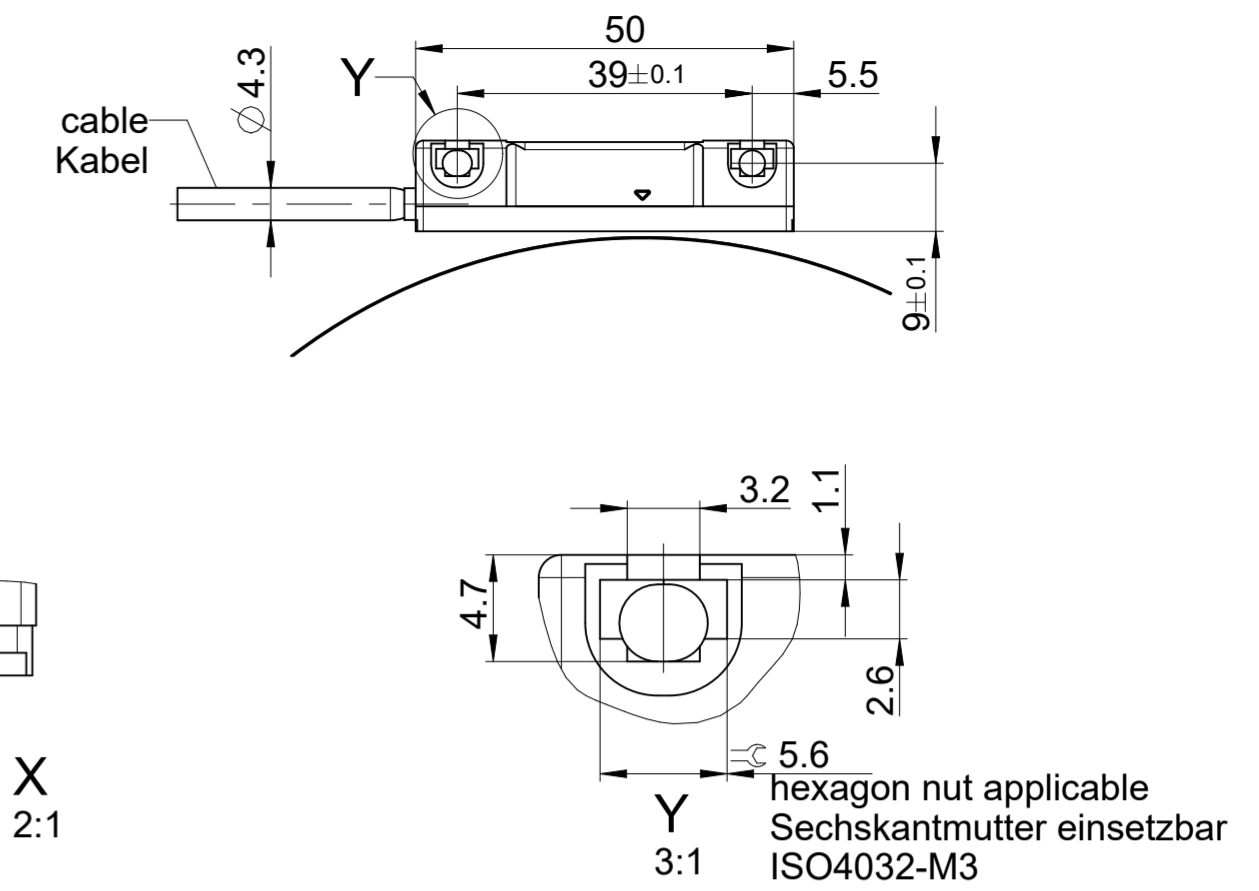
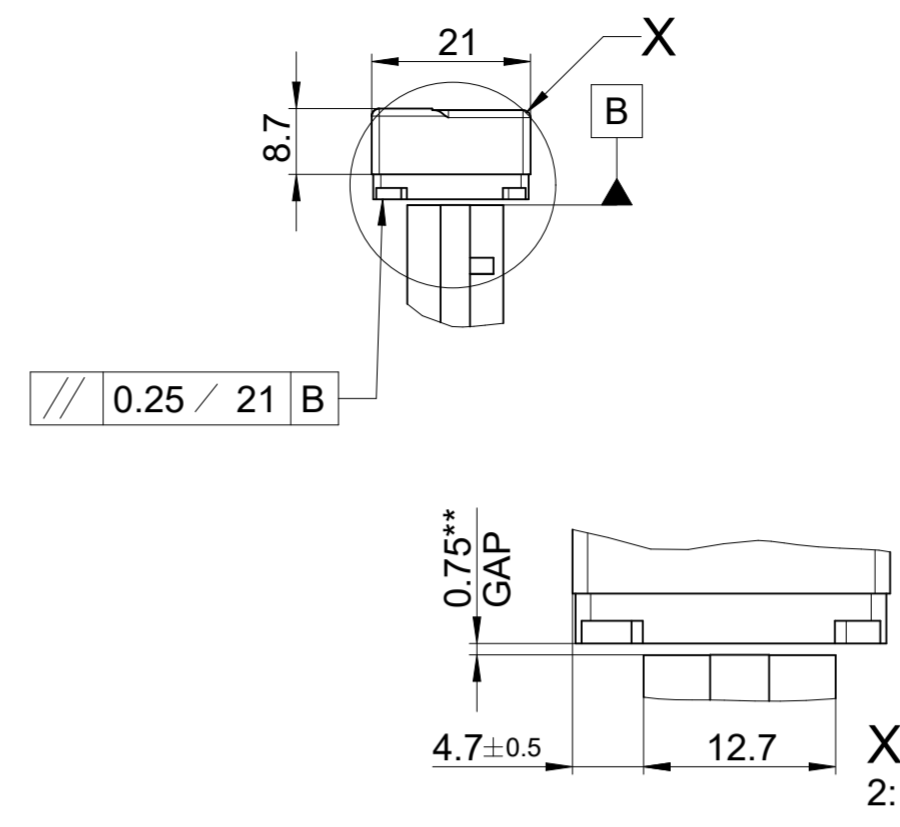


clamping screw (allen wrench 3mm)
 tightening torque 5Nm
 Spannschraube (Innensechskantschlüssel 3 mm)
 Anziehdrehmoment 5Nm

0.2
 steel tape scale
 Stahlmaßband

8 ± 0.05



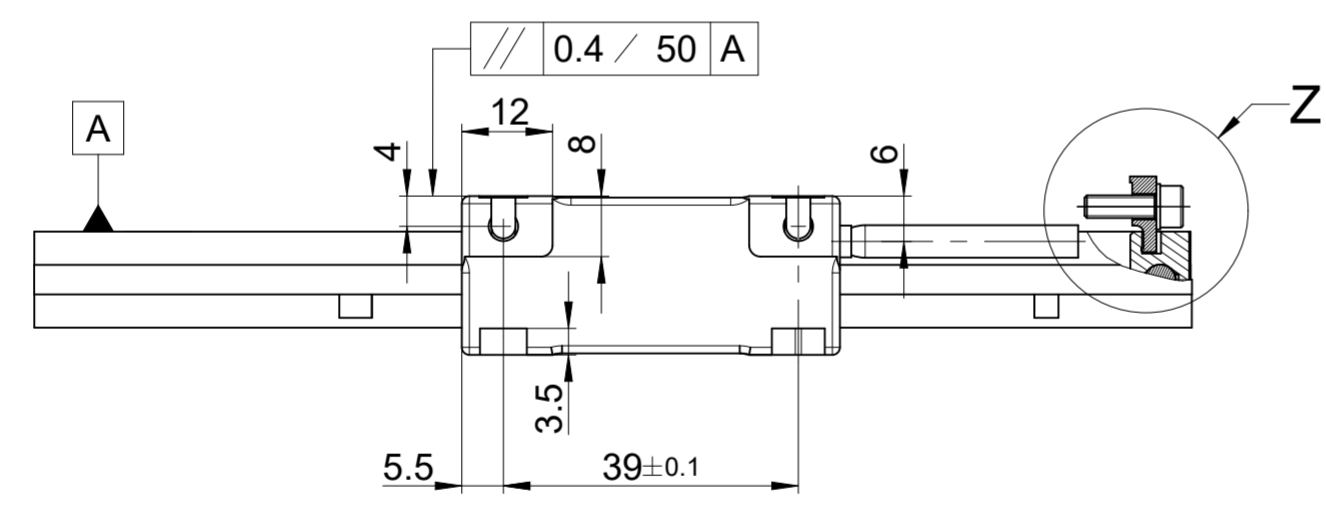
* = recess for tensioning cleat
 * = Freistellung für Spannschloß

L = bearing
 L = Lagerung

D = shaft diameter
 D = Wellendurchmesser

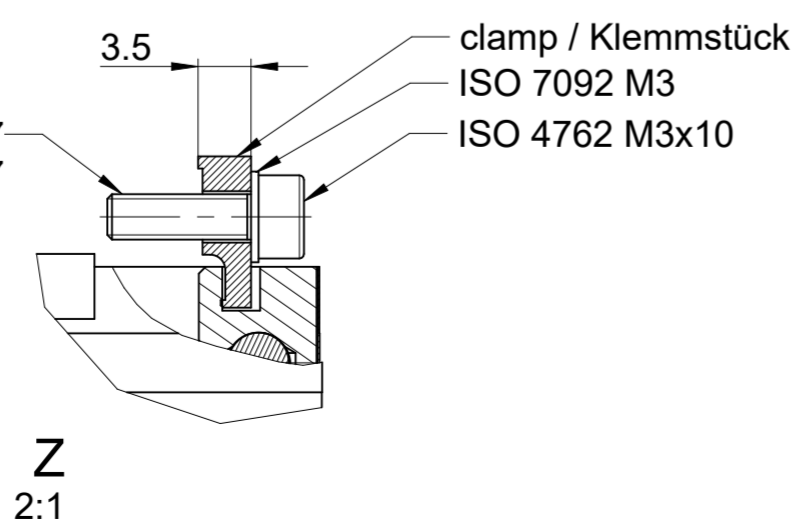
j = additional reference marks separated by n x 100mm
 j = zusätzliche Referenzmarken im Abstand von n x 100mm

** D < ϕ 500 = +0,2mm/-0,1mm
 ** D ≥ ϕ 500 = +0,4mm/-0,2mm

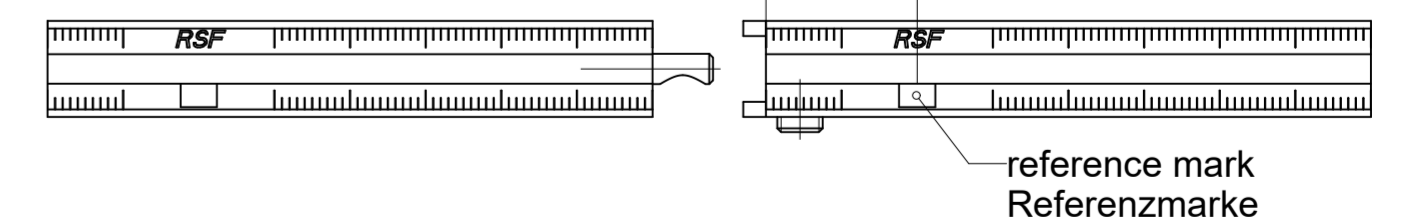


optional: installations kit ID 683797-01
 Optional: Montagesatz ID 683797-01

drilling for customer's scope of supply M3 ∇ 7
 Gewindebohrung kundenseitig M3 ∇ 7



representation stretched
 Darstellung gestreckt



Original drawing		ID number:	
Scale	Format	Change No.	C157360-25
1:1	A2	Phase:	Serie
Dimensions in mm		Tolerances as per ISO 8015	
		General Tolerances ISO 2768:1989-mH ≤ 6 ± 0.2	
MSR45 MOR MSR45 MOR Anschlussmaße / Mating Dimensions			
The reproduction, distribution and utilization of this document as well as the communication of its contents to others without express authorization is prohibited. Offenders will be held liable for the payment of damages. All rights reserved in the event of the grant of a patent, utility model or design. (ISO 16016)			
Released		Version	Revision
29.02.2024			
RSF Elektronik www.rsf.at		D 642474-01-B-01	
Document number		Sheet	Page
		1	1