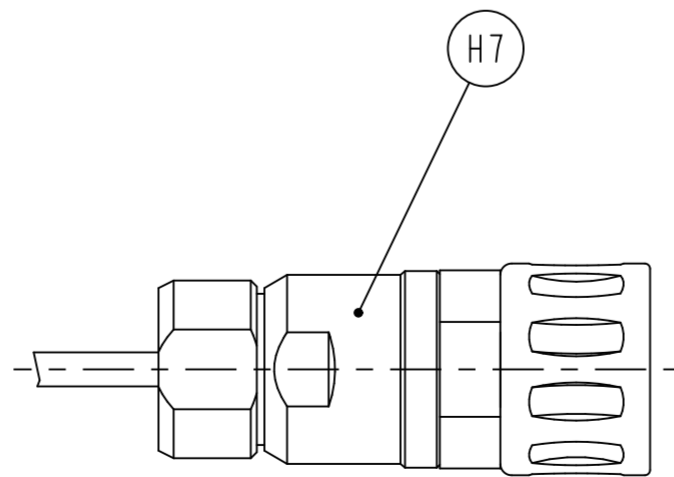
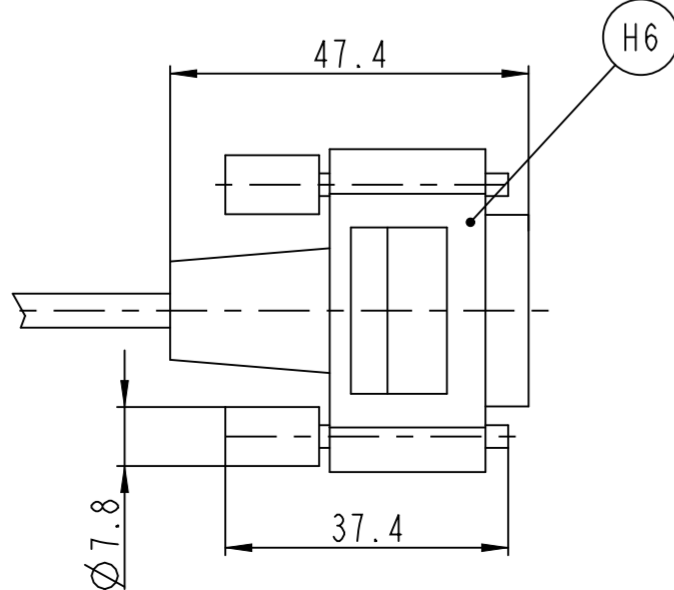
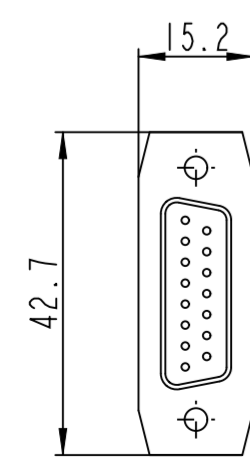


- (H1) = Dichtung
Seal
- (H2) = Anzeige Übertragungsstrecke
Display of transmission path
- (H3) = Anzeige Tasterzustand
Display of Probe status
- (H4) = Richtung Tastersignale
direction of Probe signales
- (H5) = Einbau-Kupplung
mounting-coupling
- (H6) = SUB-D-Stecker
SUB-D-connector
- (H7) = Stecker
Connector



		ID number: 631225-01	
		Release number: N0511	
		Tolerierung nach DIN ISO 8015 Tolerances as per DIN ISO 8015	
		Allgemeintol. ISO 2768-mH ±0.2mm General tol. ISO 2768-mH ±0.2mm	
Original drawing Scale: 1:1 Format: A2		SE 640 Anschlussmaße	
The reproduction, distribution and utilization of this document as well as the communication of its contents to others without express authorization is prohibited. Offenders will be held liable for the payment of damages. All rights reserved in the event of the grant of a patent, utility model or design. (ISO 16016)			
HEIDENHAIN DR. JOHANNES HEIDENHAIN GmbH 83301 Traunreut, Germany		Version Revision Sheet Page D 635323-01-A-01 1 1 Document number	