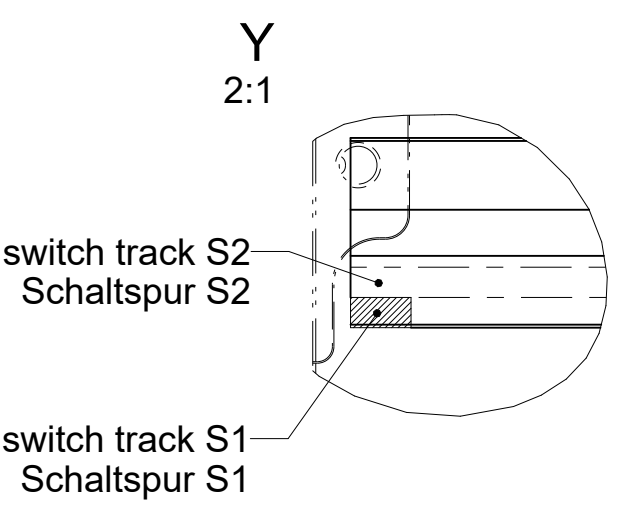
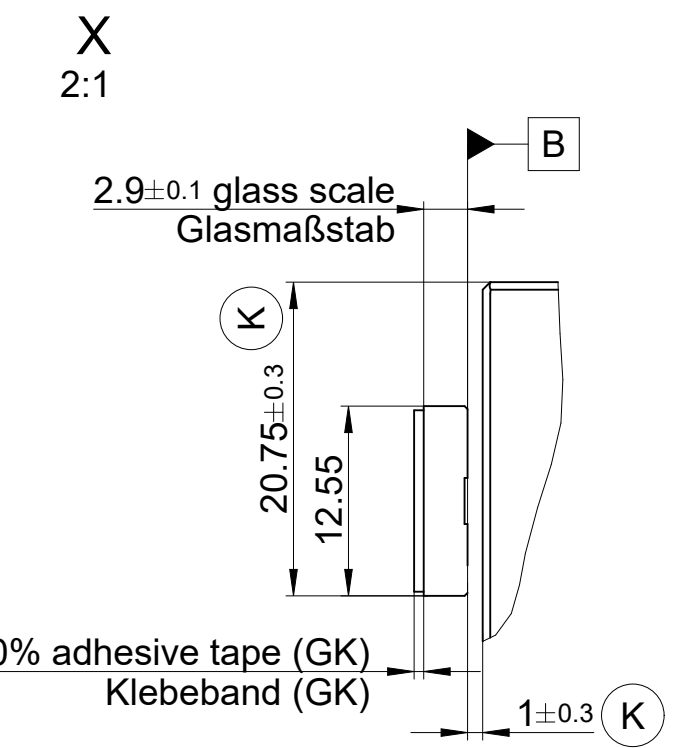
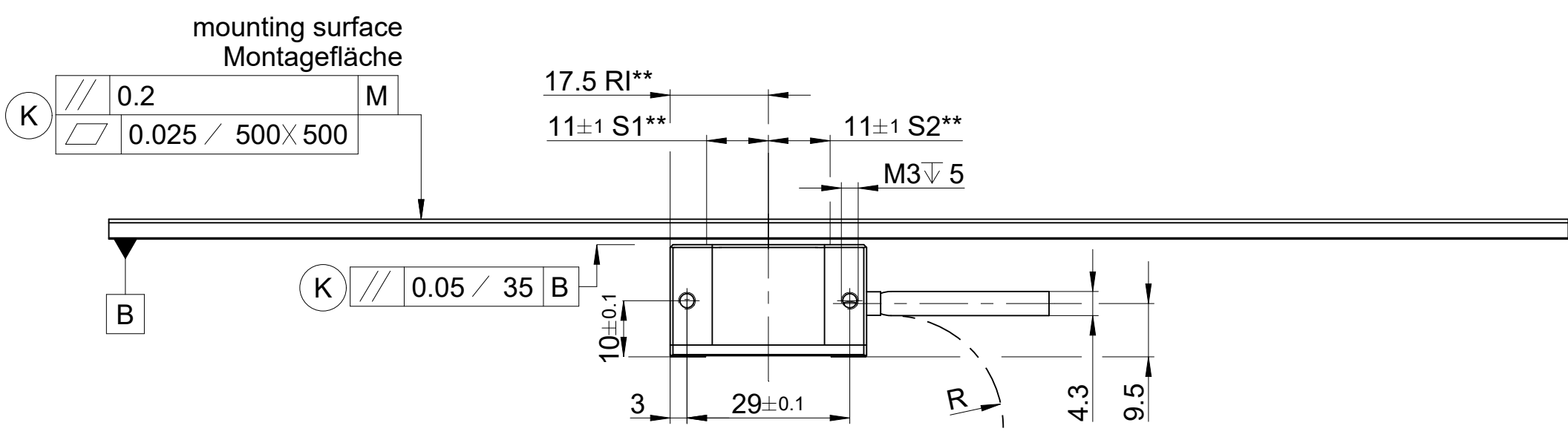
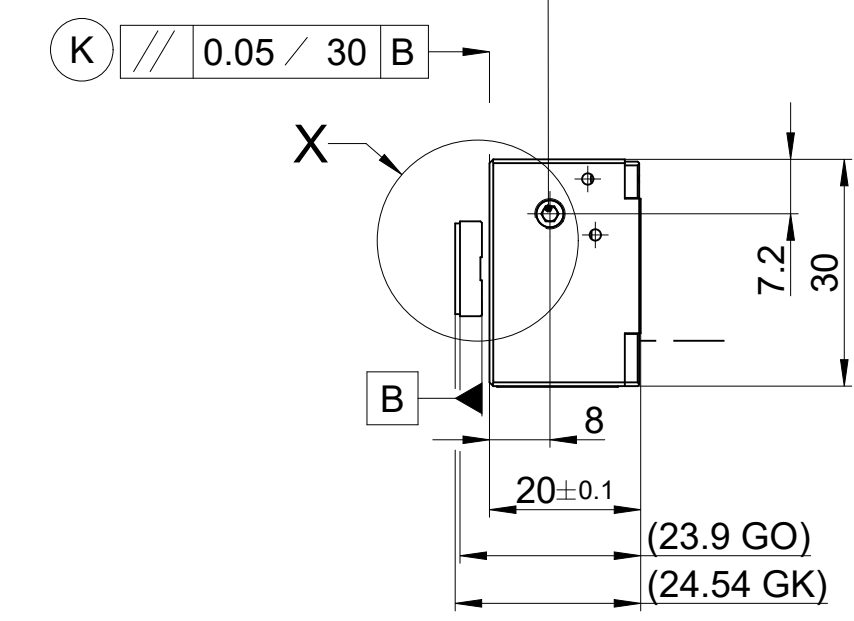


Moiré-adjustmentscrew
(allen set screw 2mm)
adjust to best signal

Moiré-Einstellschraube
(Innensechskant 2mm)
Einstellen auf optimales
Signal



- M = machine guideway / Maschinenführung
 - ML = measuring length / Messlänge
 - \leftrightarrow = 0...ML
 - * = max. change in operation / max. Änderung bei Betrieb
 - C = cable / Anschlusskabel
 - (K) = customer mounting dimensions / kundenseitige Anbaumaße
 - k = any position of reference mark / beliebige Position der Referenzmarke
 - GO = glass scale without adhesive tape / Glasmaßstab ohne Klebeband
 - GK = glass scale with adhesive tape / Glasmaßstab mit Klebeband
- Option:
- S1, S2 = switch signals / Schaltsignale
 - ** = sensor position / Sensorposition

Original drawing		MS82 GK/GO		ID number: -
Scale		MS82 GK/GO		Change No. C157360-28
Format		Anschlussmaße / Mating Dimensions		Phase: Serie
Dimensions in mm	1:1	A2		Tolerances as per ISO 8015
				General Tolerances ISO 2768:1989-mH ≤ 6:±0.2
The reproduction, distribution and utilization of this document as well as the communication of its contents to others without express authorization is prohibited. Offenders will be held liable for the payment of damages. All rights reserved in the event of a patent, utility model or design. (ISO 16016)				
Released		Version		Revision
09.04.2024		D 634524-01-B-01		Sheet 1 of 1
www.rsfelektronik.at		Document number		