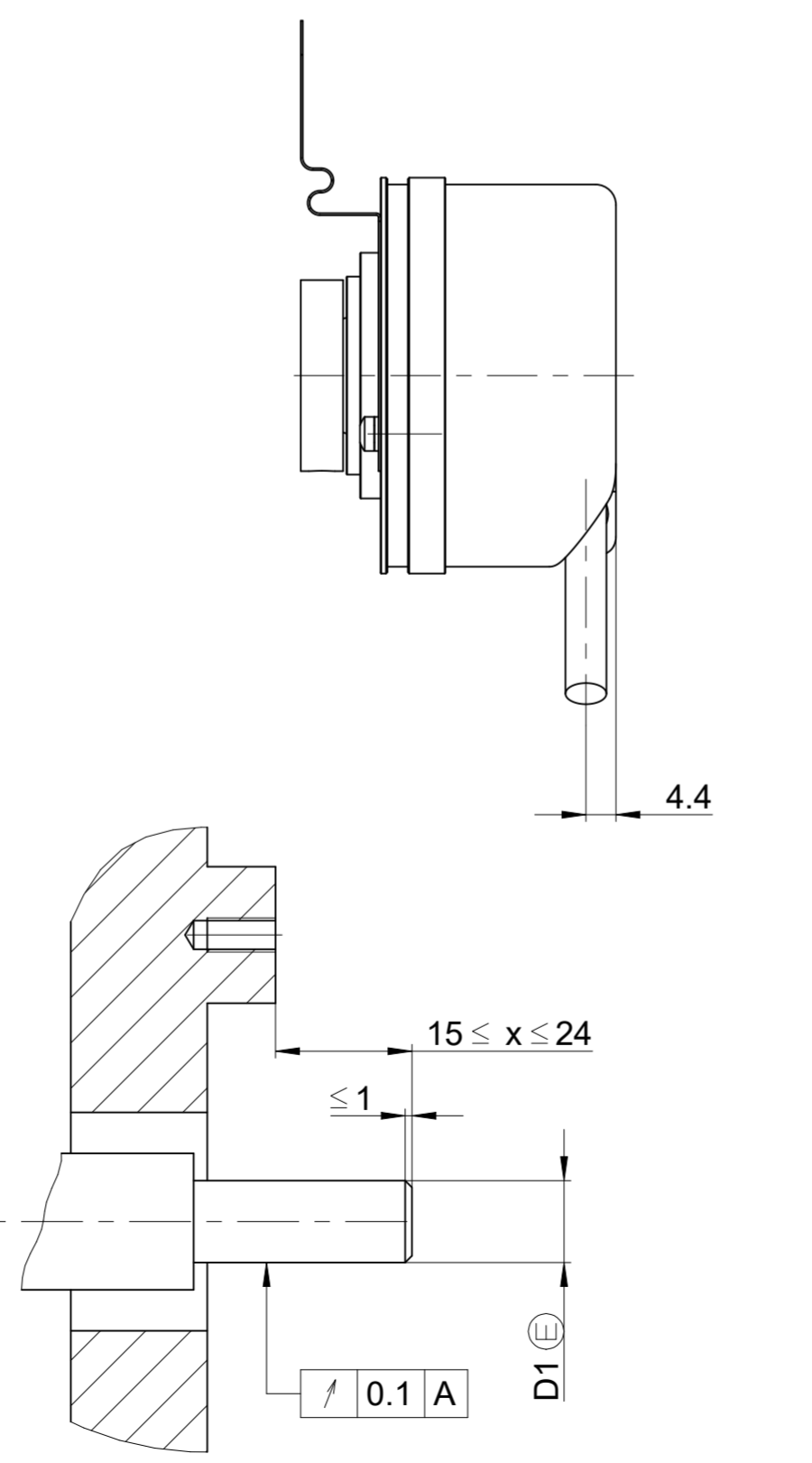
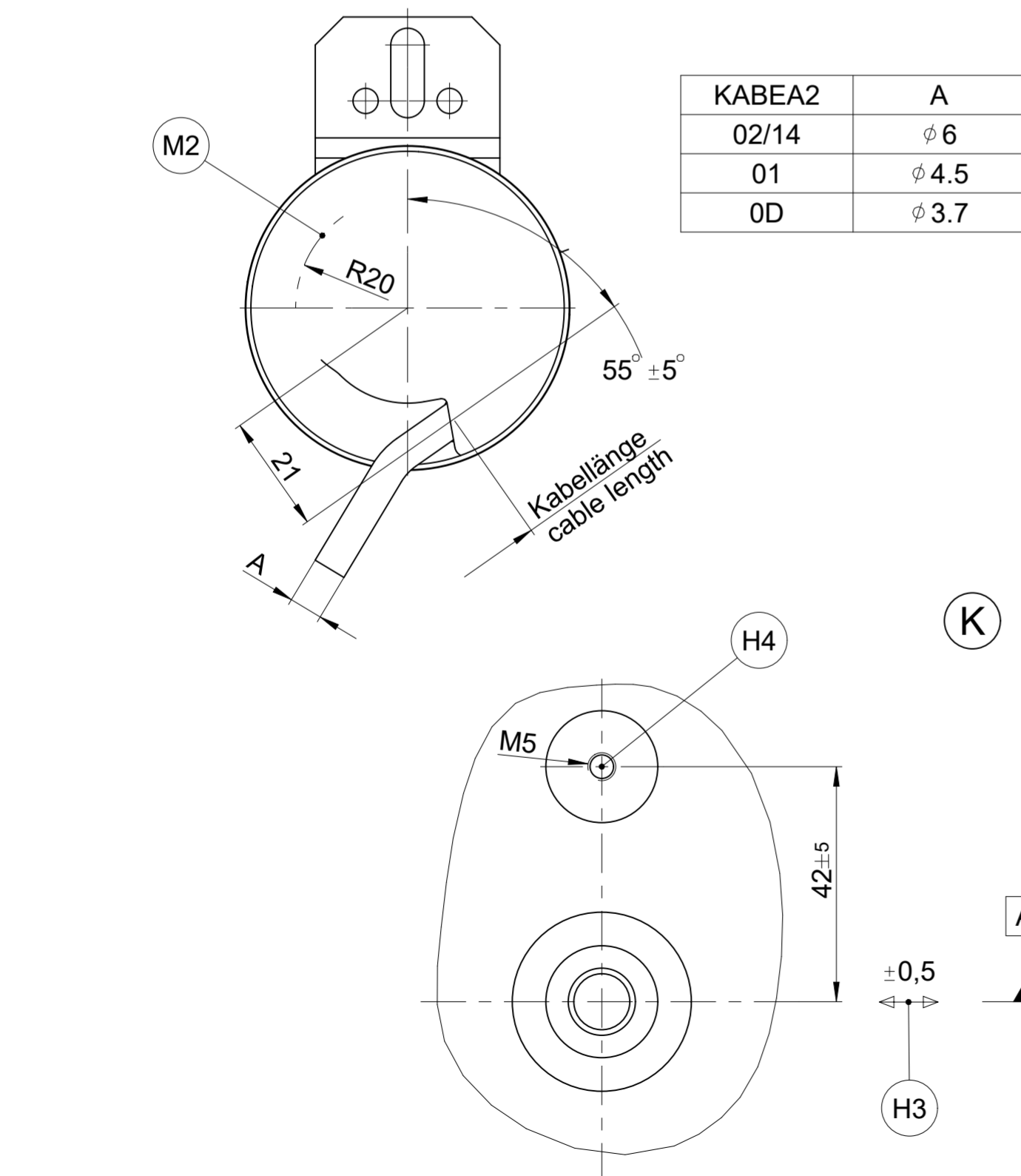


KABEA2	A
02/14	φ 6
01	φ 4.5
0D	φ 3.7



- A** = Lagerung Kundenwelle Bearing of mating shaft
- K** = Kundensseitige Anschlussmaße Required mating dimensions
- M1** = Messpunkt Arbeitstemperatur Measuring point for operating temperature
- M2** = Messpunkt Vibration Measuring point for vibration
- H1** = Klemmschraube mit Innensechsrund X8 Anzugmoment 1,1Nm ±0,1Nm Locking screw with hexalobular recesses X8 Tightening torque 1.1Nm ±0.1Nm
- H2** = Abstand Klemmring - Kupplung Distance clamping ring - coupling
- H3** = Ausgleich von Montagetoleranzen und thermischer Ausdehnung, keine dynamische Bewegung Compensation of mounting tolerances and thermal expansion, no dynamic motion
- H4** = Befestigung Drehmomentstütze z. B. ISO 4762 - 8.8 - M5x10 - MKL Anzugsmoment 5 +0,5 Nm Fastening via torque wrench e. g. ISO 4762 - 8.8 - M5x10 - MKL Tightening torque 5 +0.5 Nm
- H5** = ERN: Drehrichtung der Welle für Ausgangssignale gemäß Schnittstellenbeschreibung ERN: Direction of shaft rotation for output signals as per the interface description
 ECN/EQN: Drehrichtung der Welle für steigende Positionswerte ECN/EQN: Direction of shaft rotation for ascending position values

68A	65A	59C	φ 12H7	φ 12g7	ID number:		
WELLA1	KUPPA1	FLANA1	D2	D1	Change No. C172391-15		
					Phase: Serie		
					ERN/ECN/EQN 4xx ERN/ECN/EQN 4xx Anschlussmaße / Mating Dimensions	Tolerances as per ISO 8015	
						General Tolerances ISO 2768:1989-mH ±6mm: ±0.2	
The reproduction, distribution and utilization of this document as well as the communication of its contents to others without express authorization is prohibited. Offenders will be held liable for the payment of damages. All rights reserved in the event of the grant of a patent, utility model or design. (ISO 16016)							
HEIDENHAIN DR. JOHANNES HEIDENHAIN GmbH 83301 Traunreut, Germany			Released	Version	Revision	Sheet	Page
			06.10.2025	D 594947-08-C-01		1	1
			Document number				