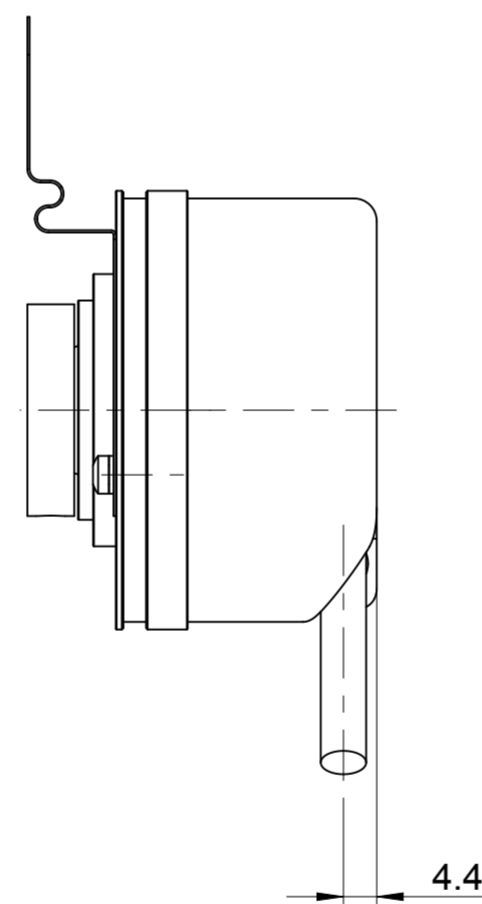
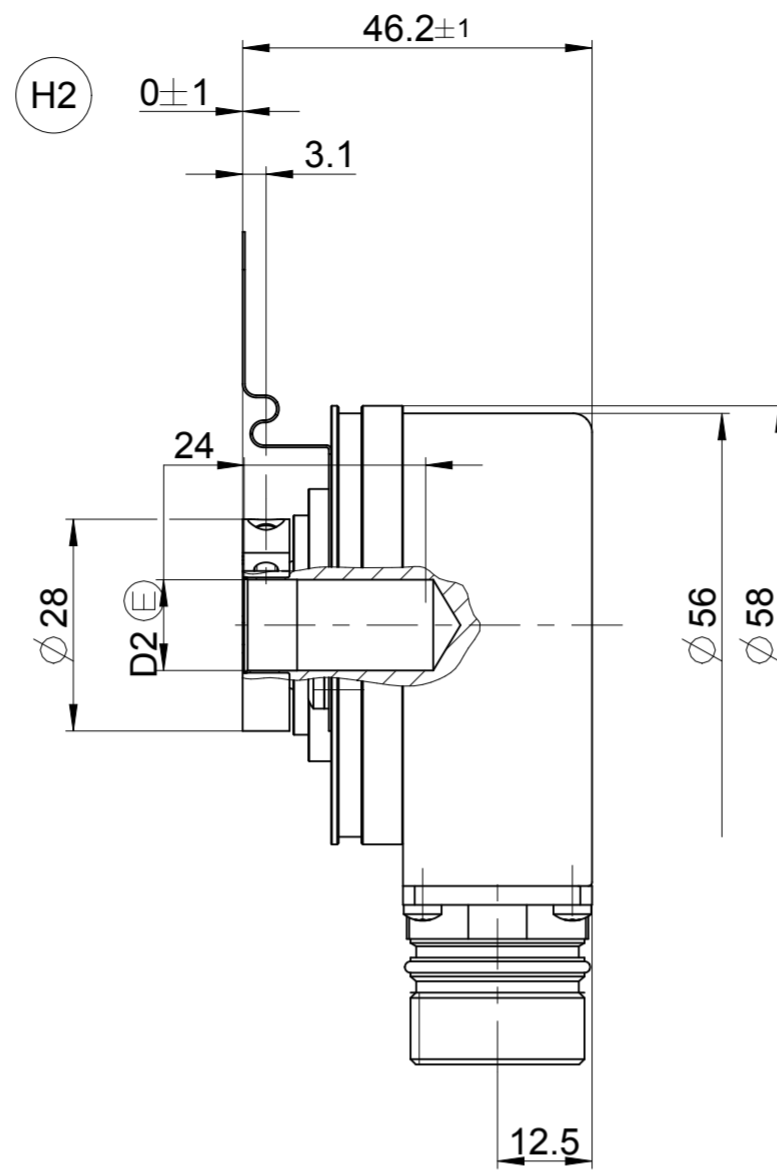
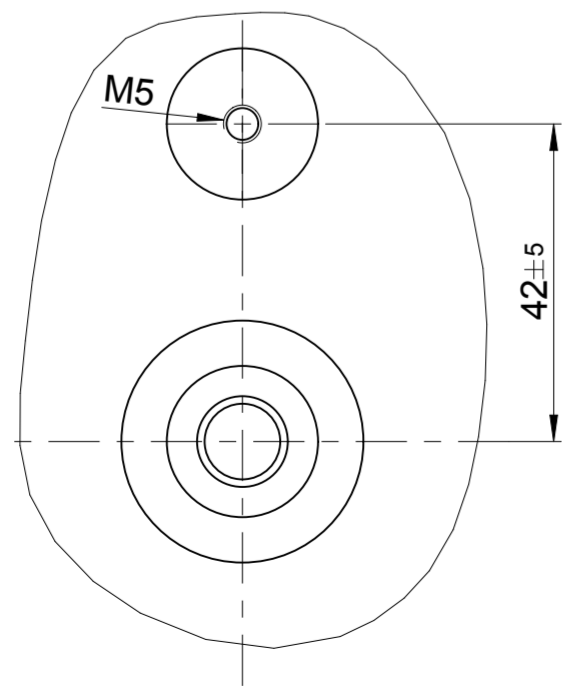
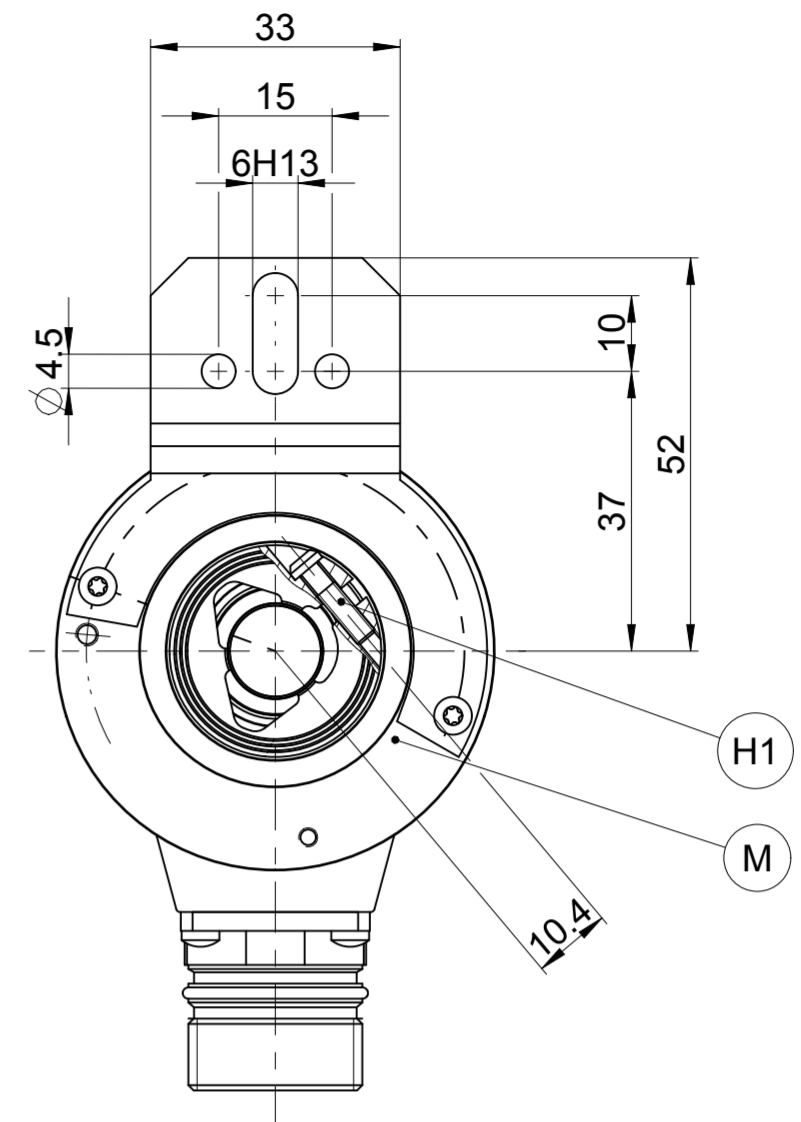
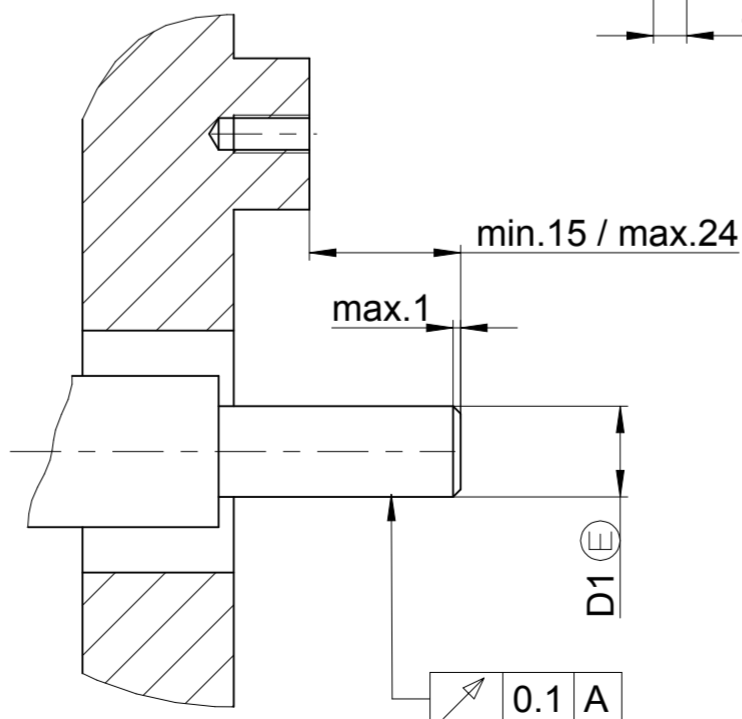


KABEA2	A
02/14	∅ 6
01	∅ 4.5
0D	∅ 3.7



(K)



- A** = Lagerung Kundenwelle      Bearings for customers shaft
- K** = Kundensseitige Anschlussmaße      Required mating dimensions
- M** = Messpunkt Arbeitstemperatur      Operating temperature measuring point
- H1** = Klemmschraube mit Innensechsrund X8 Anzugmoment 1,1Nm ±0,1Nm      Locking screw with hexalobular recesses X8 torque 1,1Nm ±0,1Nm
- H2** = Abstand Klemmring - Kupplung      Distance clamping ring - coupling
- H3** = Ausgleich von Montagetoleranzen und thermischer Ausdehnung, keine dynamische Bewegung      Compensation of mounting tolerances and thermal expansion, no dynamic motion

68A	65A	59C	∅ 12H7	∅ 12g7	ID number:			
WELLA1	KUPPA1	FLANA1	D2	D1	Change No. C056459-10			
					Phase: Serie			
Original drawing Scale: 1:1    Format: A2 Dimensions in mm: 1:1    A2 Anschlussmaße / Mounting Dimensions					Tolerierung nach DIN ISO 8015 Tolerances as per DIN ISO 8015			
					Allgemeintol. ISO 2768-mH ∓6mm:±0,2 General tol. ISO 2768-mH ∓6mm:±0,2			
The reproduction, distribution and utilization of this document as well as the communication of its contents to others without express authorization is prohibited. Offenders will be held liable for the payment of damages. All rights reserved in the event of the grant of a patent, utility model or design. (ISO 16016)								
<b>HEIDENHAIN</b> DR. JOHANNES HEIDENHAIN GmbH 83301 Traunreut, Germany					Version	Revision	Sheet	Page
					D 594947-07-A-01			
					Document number			