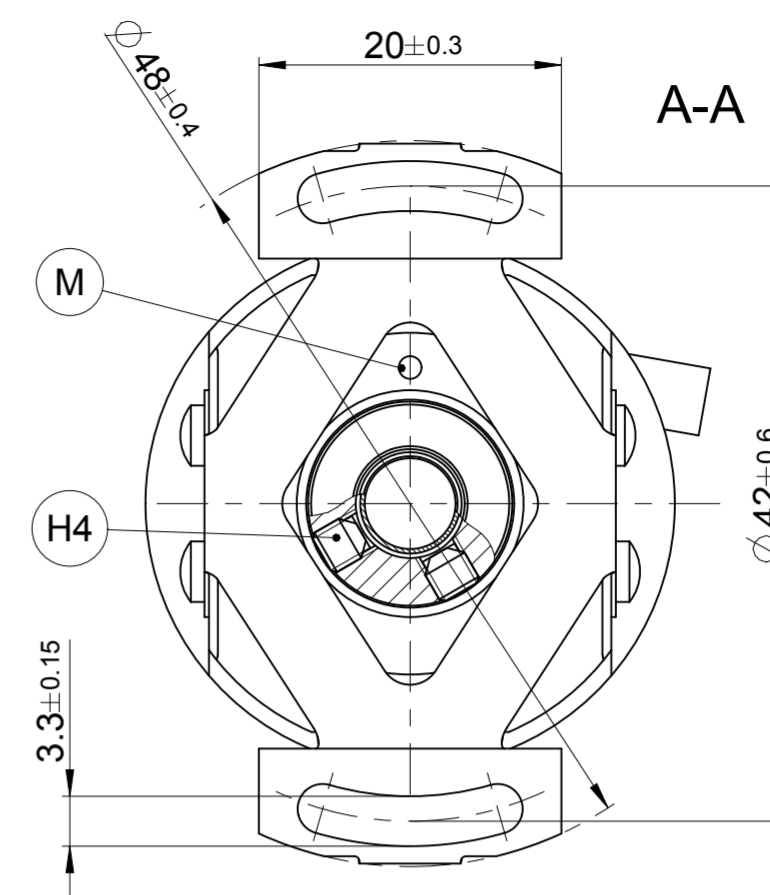
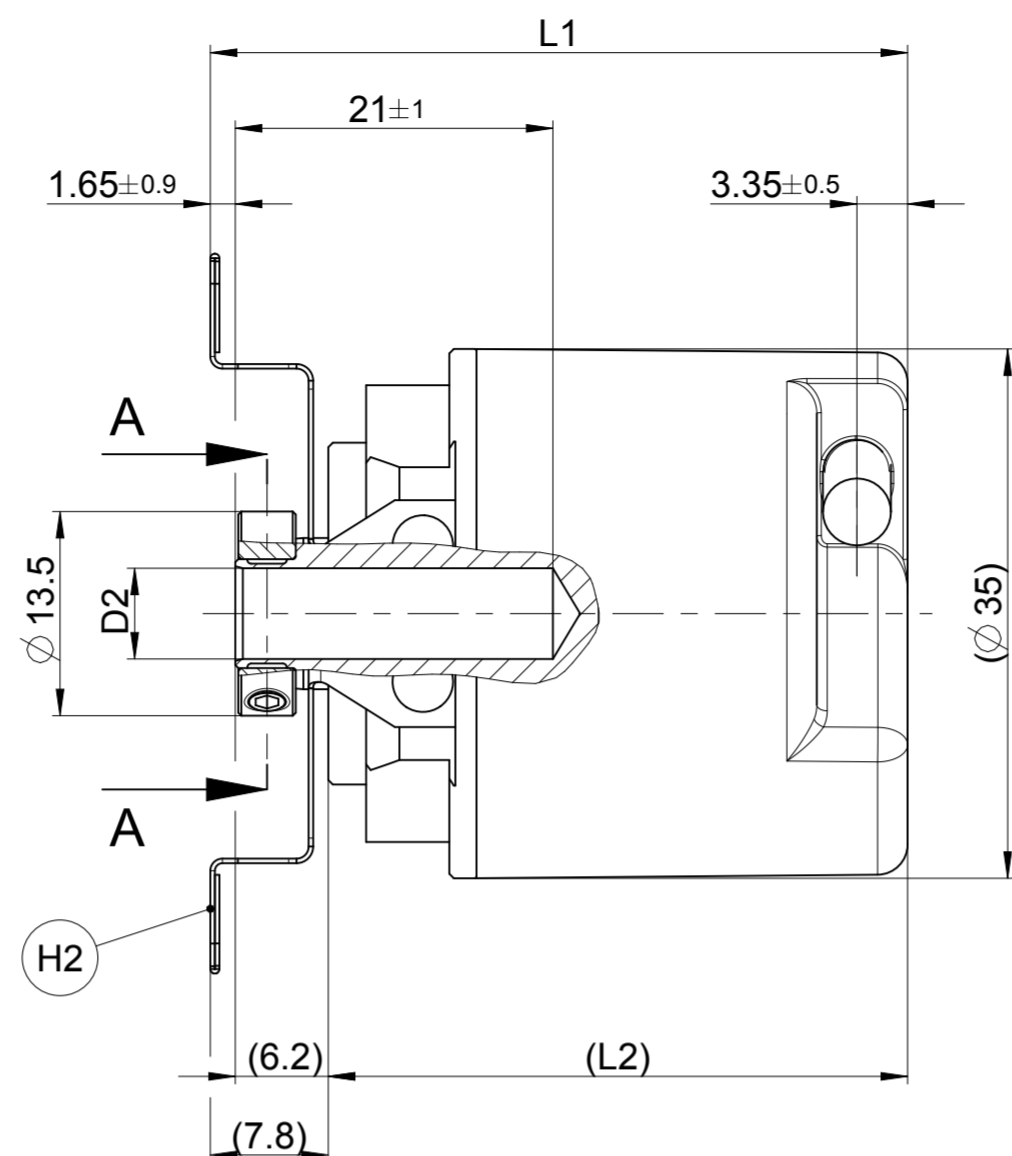
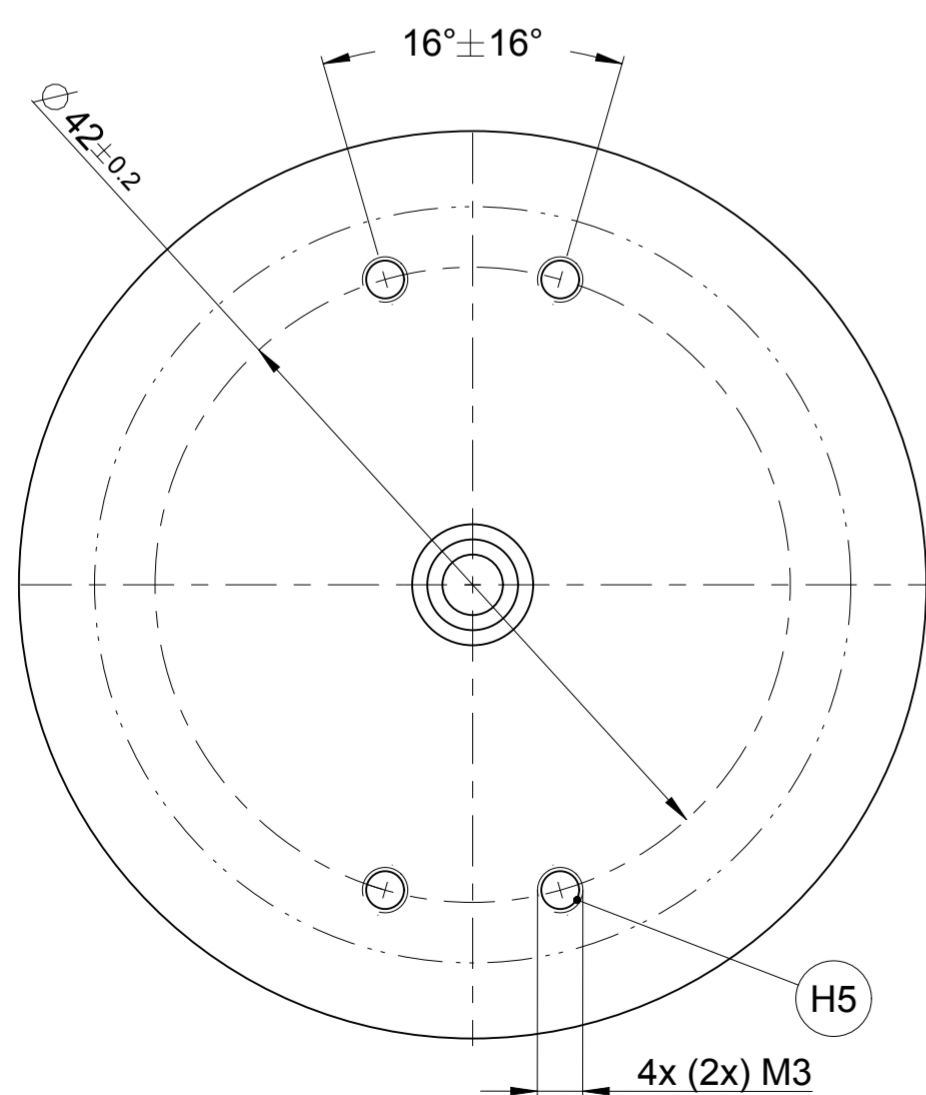
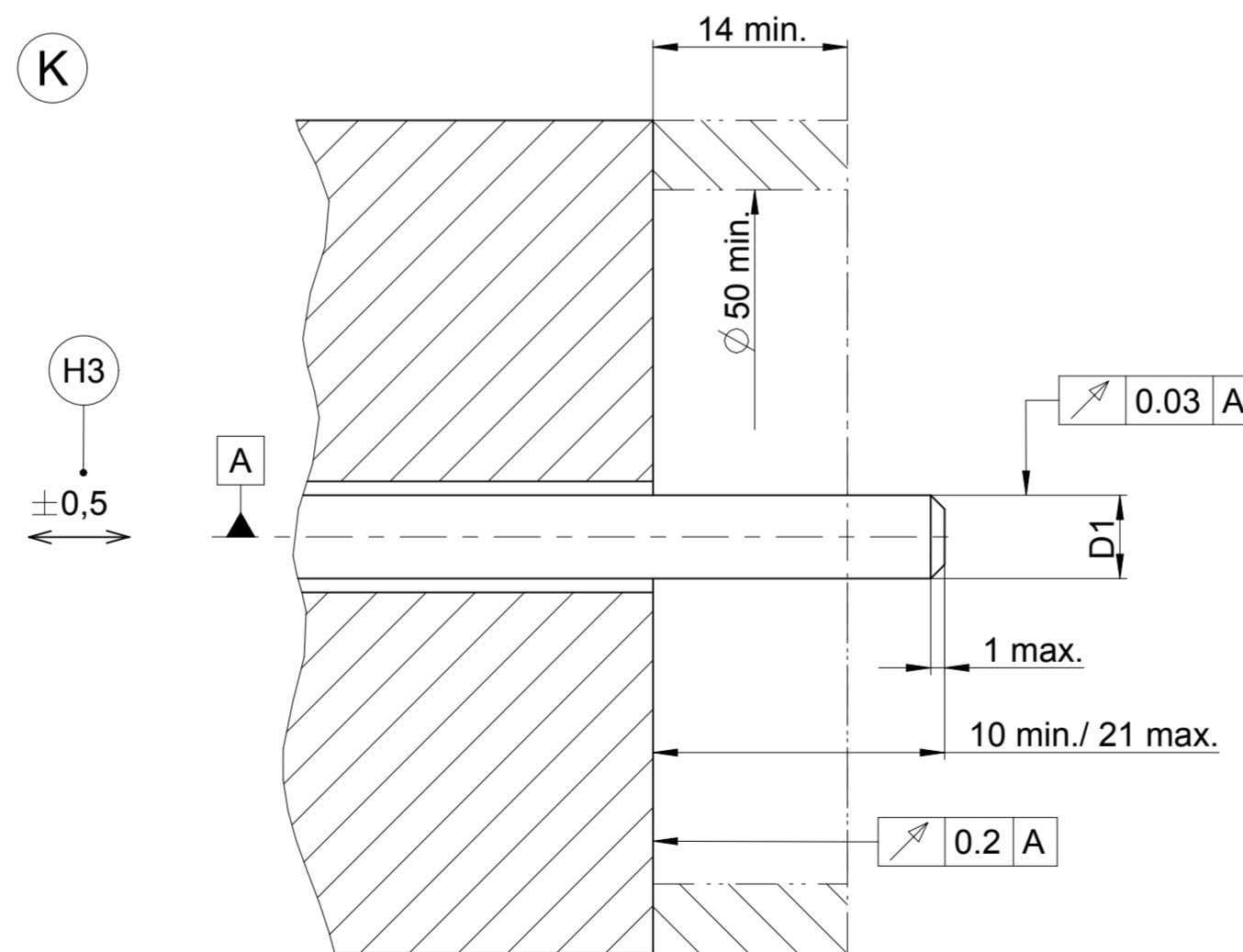


Schnittstelle Interface	D3
≠ DRIVE-CLIQ	∅ 4,5
DRIVE-CLIQ	∅ 3,7



- A** = Lagerung Kundenwelle
Bearing for customer shaft
- K** = Kundenseitige Anschlussmaße
Required mating dimensions
- M** = Messpunkt Arbeitstemperatur
Operating temperature measuring point
- H2** = Kupplung
Coupling
- H3** = Ausgleich von Montagetoleranzen und thermischer Ausdehnung, keine dynamische Bewegung
Compensation of mounting tolerances and thermal expansion, no dynamic motion
- H4** = 2x Schraube Klemmring, Anzugsmoment 0,6±0,1Nm
2x screw clamping ring, Torque 0,6±0,1Nm SW 1.5
- H5** = Empfohlener Anbau mit 4 Schrauben oder 2 Schrauben mit Druckstück
Mounting recommended with 4 screws or 2 screws with pressure piece



50C	14A	49A	ECN	∅ 4 g7	(∅ 4)	42.1±1	(34.4)
50E	14A	49A	ECN	∅ 6 g7	(∅ 6)	42.1±1	(34.4)
50F	14A	49A	ECN	∅ 6,35 g7	(∅ 6,35)	42.1±1	(34.4)
50C	14A	49A	EQN	∅ 4 g7	(∅ 4)	46.5±1.5	(38.4)
50E	14A	49A	EQN	∅ 6 g7	(∅ 6)	46.5±1.5	(38.4)
50F	14A	49A	EQN	∅ 6,35 g7	(∅ 6,35)	46.5±1.5	(38.4)

WELLA1	KUPPA1	FOKAA1	NAMEA1	D1	D2	L1	L2	ID number:
								Change No. C078449-05
								Phase: Serie
								Tolerierung nach DIN ISO 8015
								Tolerances as per DIN ISO 8015
								Allgemeintol. ISO 2768-mH ∓6mm:±0,2
								General tol. ISO 2768-mH ∓6mm:±0,2
								The reproduction, distribution and utilization of this document as well as the communication of its contents to others without express authorization is prohibited. Offenders will be held liable for the payment of damages. All rights reserved in the event of the grant of a patent, utility model or design. (ISO 16016)
								Version Revision Sheet Page
								1 1
								HEIDENHAIN
								DR. JOHANNES HEIDENHAIN GmbH
								83301 Traunreut, Germany
								D 572165-02-A-01
								Document number