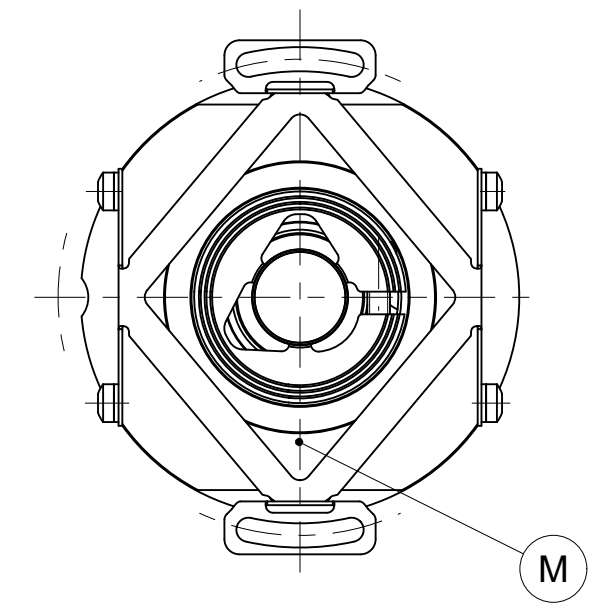
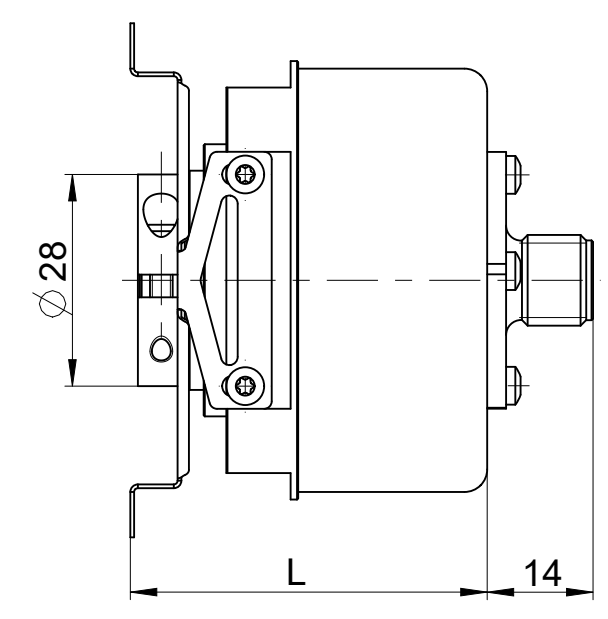
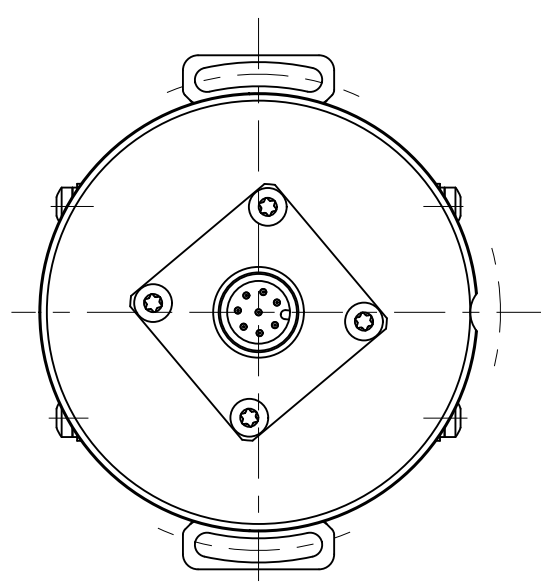
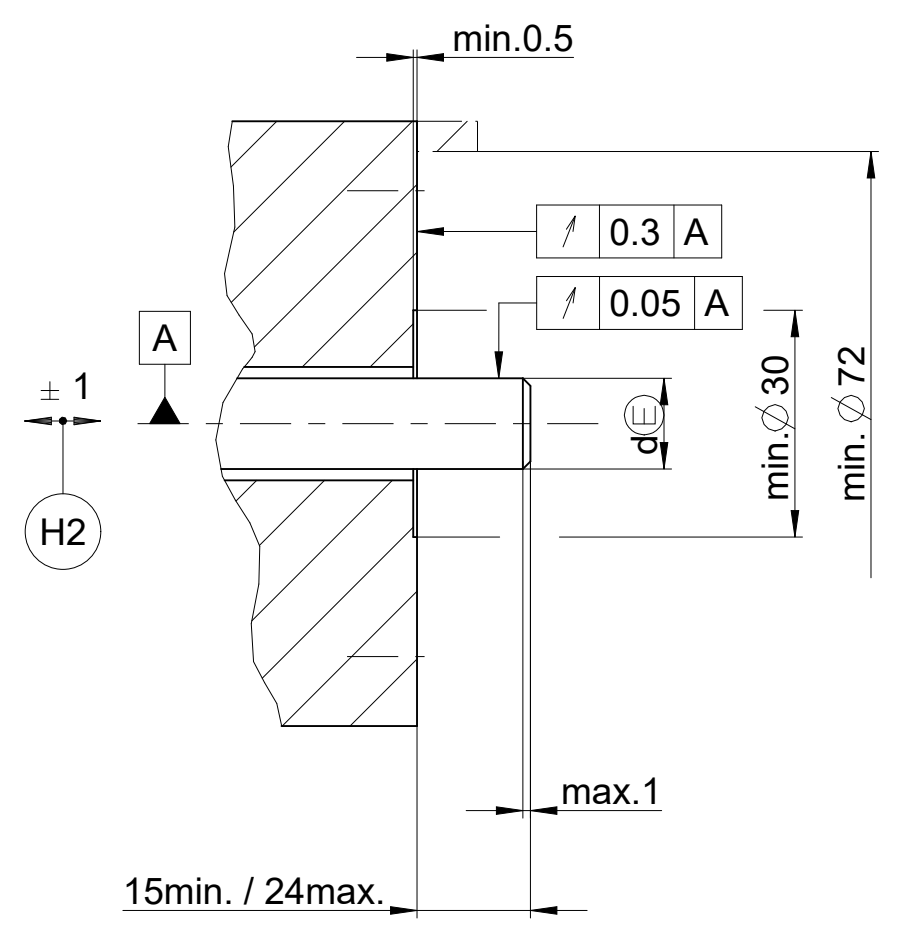
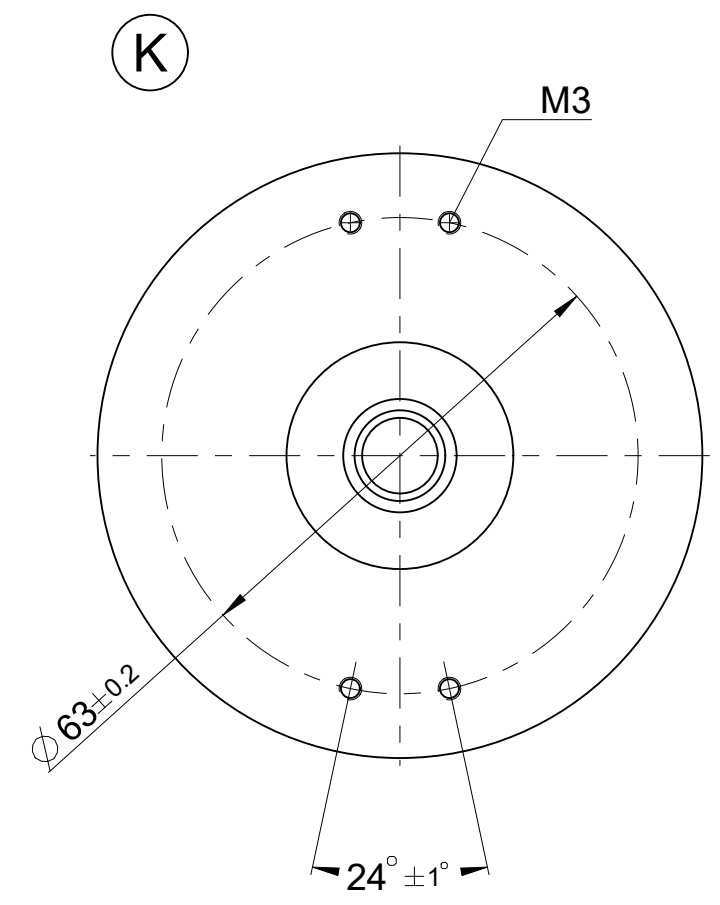
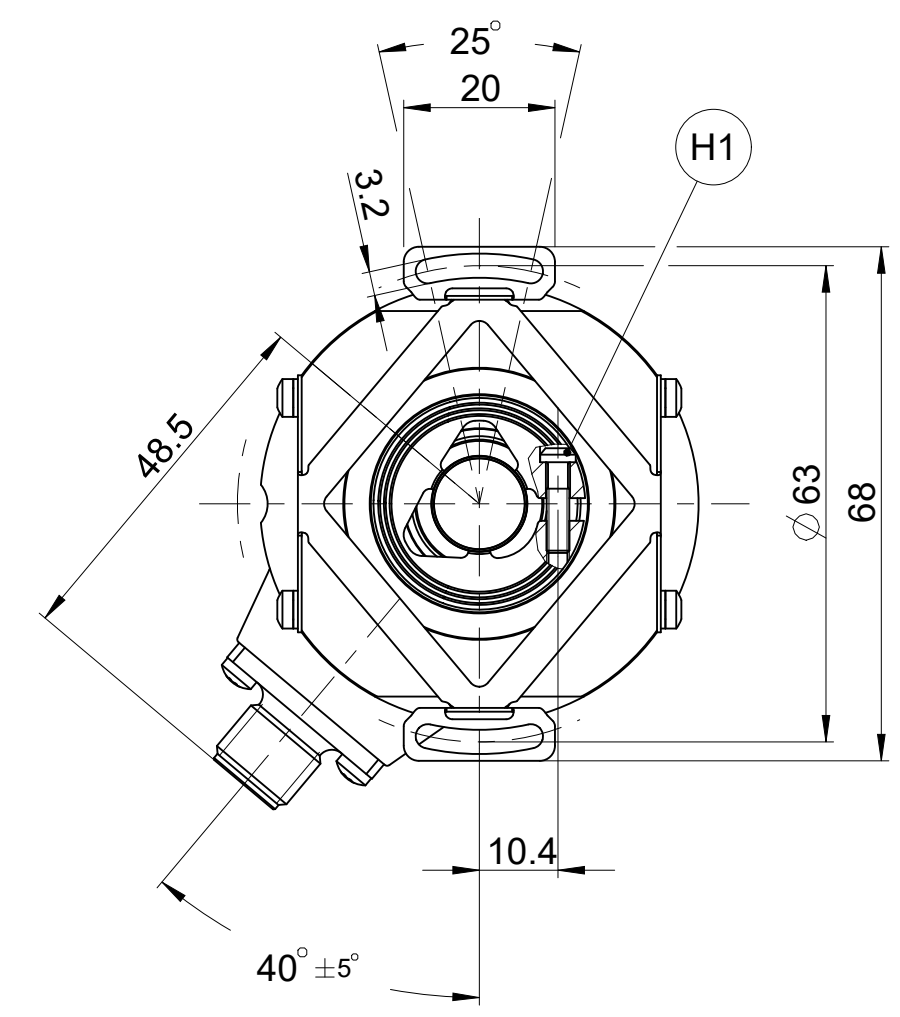
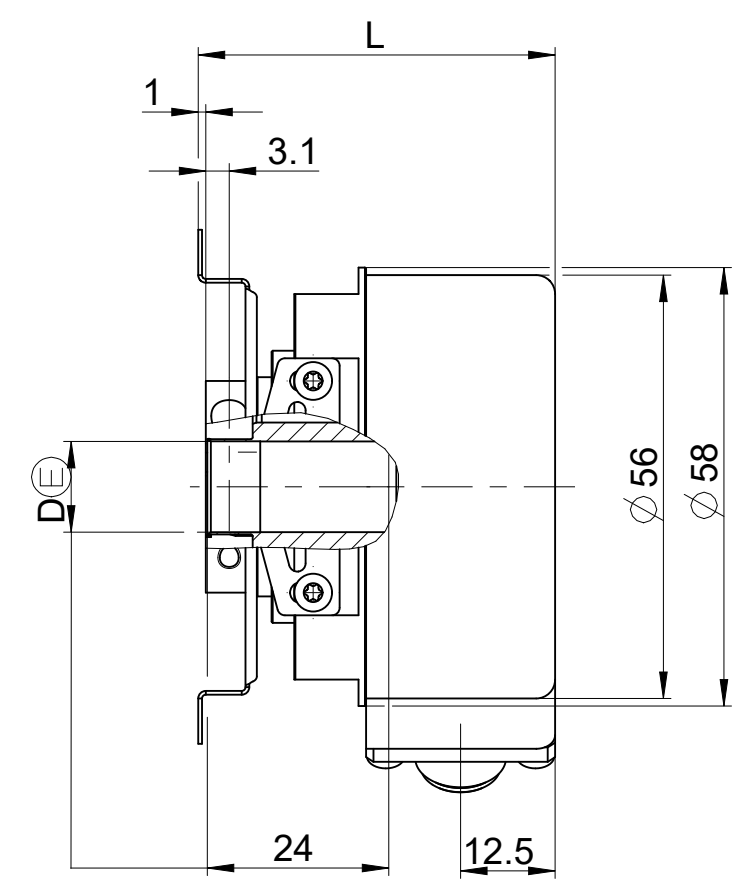
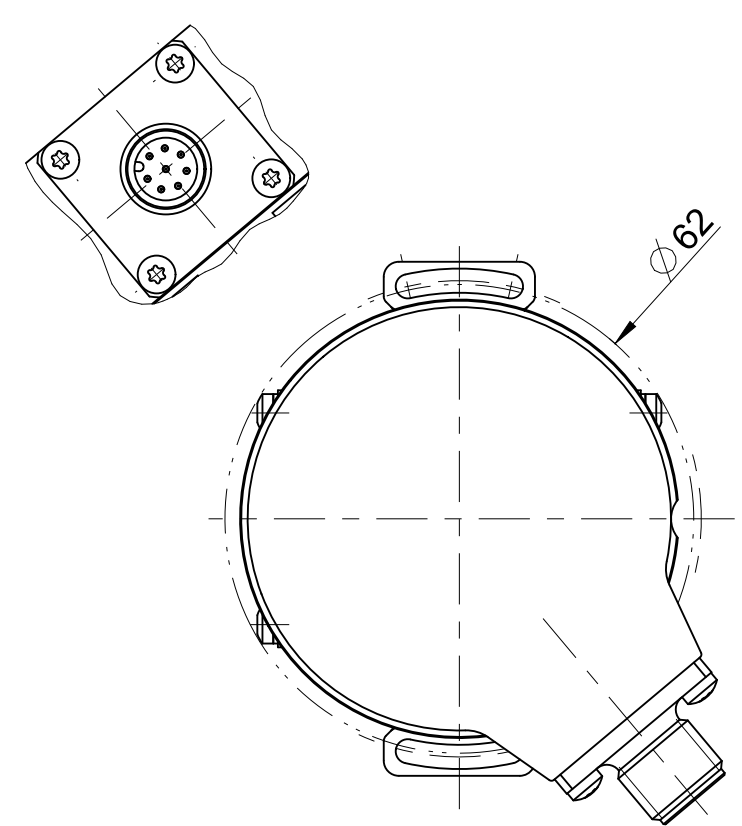


1 2 3 4 5 6 7 8 9 10 11 12

A B C D E F G H



- A** = Lagerung Kundenwelle Bearings for customer shaft
- K** = Kundenseitige Anschlußmaße Required mating dimensions
- M** = Messpunkt Arbeitstemperatur Operating temperature measuring point
- H1** = Klemmschraube mit Innensechsrund X8 Anzugsmoment $1,1 \pm 0,1$ Nm Locking screw with hexalobular recesses X8 torque $1,1 \pm 0,1$ Nm
- H2** = Ausgleich von Montagetoleranzen und thermischer Ausdehnung, keine dynamische Bewegung Compensation of mounting tolerances and thermal expansion, no dynamic motion

			L
Generation 3.2	ECN / EQN	2048 Striche / Lines	$47,2 \pm 0,5$
Generation 3.1	ECN / EQN	2048 Striche / Lines	$47,7 \pm 0,5$

68B	$\phi 14H7$	$\phi 14g7$	14
68A	$\phi 12H7$	$\phi 12g7$	14
68C	$\phi 10H7$	$\phi 10g7$	14
68D	$\phi 9,52H7$	$\phi 9,52g7$	14
68F	$\phi 8H7$	$\phi 8g7$	14
WELLA1	D	d	KUPPA1

Original drawing		ECN/EQN 4xx		ID number:
Scale	Format	ECN/EQN 4xx		Change No. C138103-05
Dimensions in mm	1:1	Anschlußmaße / Mating Dimensions		Phase: Serie
				Tolerierung nach DIN ISO 8015
				Tolerances as per DIN ISO 8015
				Allgemeintol. ISO 2768-mH $\pm 6mm \pm 0,2$
				General tol. ISO 2768-mH $\pm 6mm \pm 0,2$
The reproduction, distribution and utilization of this document as well as the communication of its contents to others without express authorization is prohibited. Offenders will be held liable for the payment of damages. All rights reserved in the event of the grant of a patent, utility model or design. (ISO 16016)				
HEIDENHAIN DR. JOHANNES HEIDENHAIN GmbH 83301 Traunreut, Germany			Version	Revision
			Sheet	Page
			1	1
			D 541103-06-A-01	
			Document number	

886 200 A2

1 2 3 4 5 6 7 8