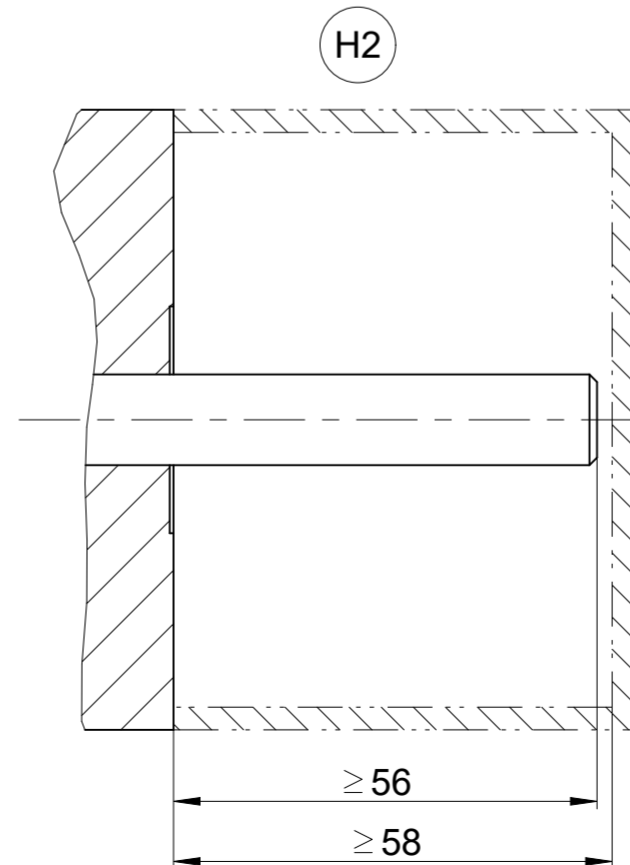
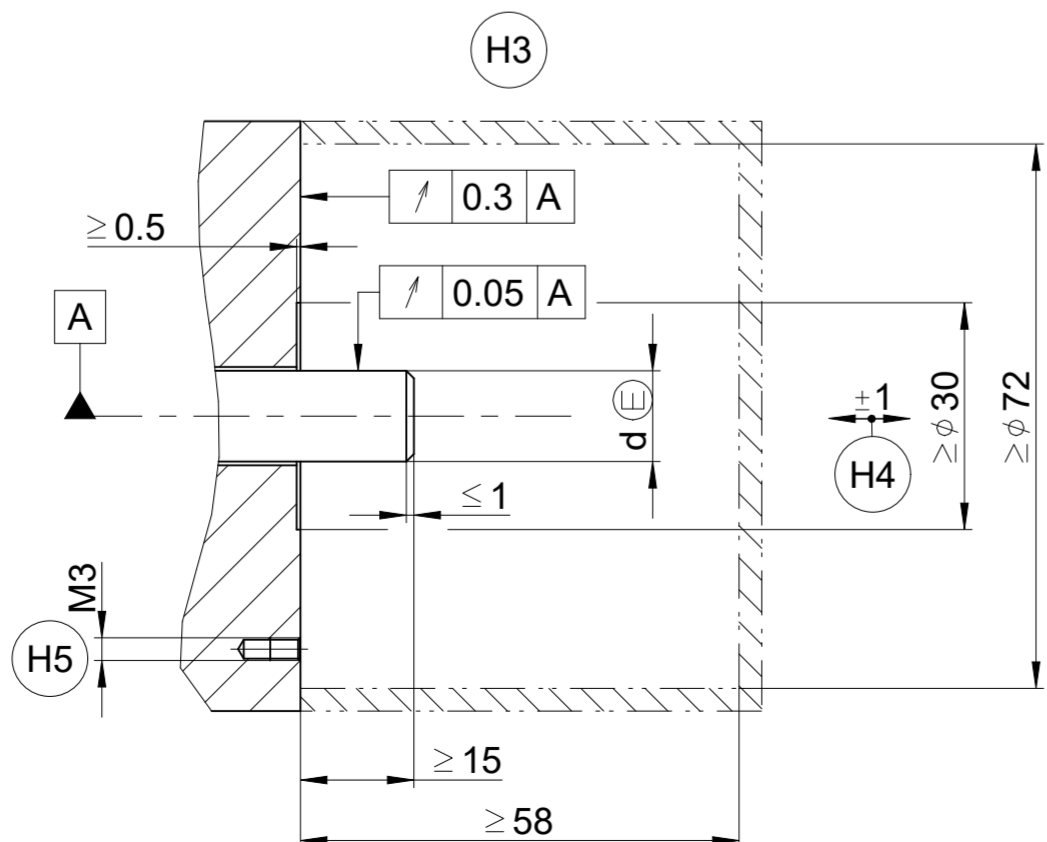
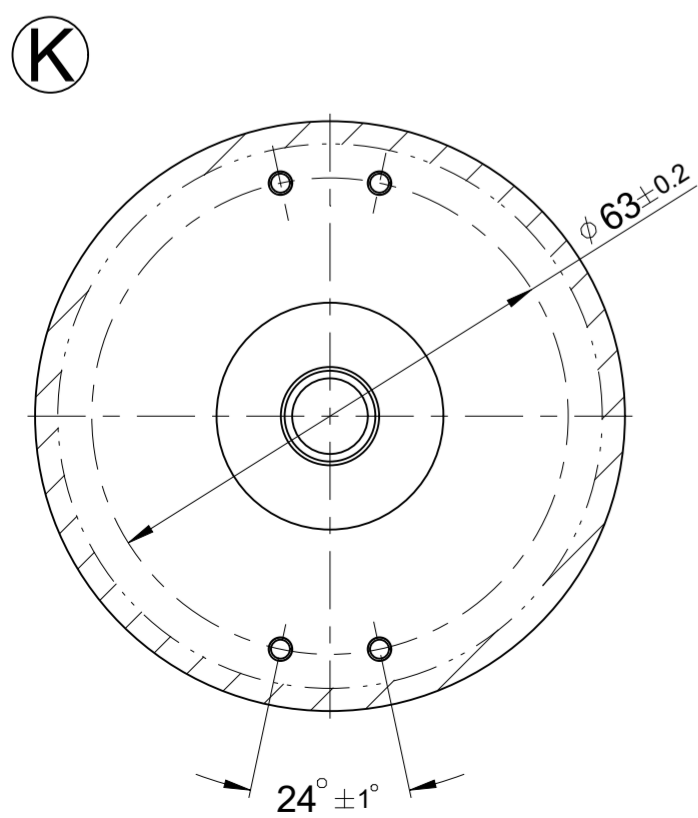


- A** = Lagerung Kundenwelle Bearing of mating shaft
- K** = Kundenseitige Anschlussmaße Required mating dimensions
- M1** = Messpunkt Arbeitstemperatur Measuring point for operating temperature
- M2** = Messpunkt Vibration Measuring point for vibration
- H1** = Klemmschraube mit Innensechsrund X8
Anzugsmoment: 1,1 ± 0,1 Nm Locking screw with hexalobular recesses X8
Tightening torque: 1.1 ± 0.1 Nm
- H2** = Ausführung Klemmring auf Kappenseite (Lieferzustand) Model with clamping ring on cap side (Condition upon delivery)
- H3** = Ausführung Klemmring auf Kupplungsseite (wahlweise montierbar) Model with clamping ring on coupling side (Selectable mounting positions)
- H4** = Ausgleich von Montagetoleranzen und thermischer Ausdehnung, keine dynamische Bewegung Compensation of mounting tolerances and thermal expansion, no dynamic motion
- H5** = Befestigung Statorkupplung
z.B. 4x ISO 4762 - 8.8 - MKL M3x10; Anzugsmoment: 1 ± 0,06Nm Fastening stator coupling
e. g. 4x ISO 4762 - 8.8 - MKL M3x10; Tightening torque: 1 ± 0.06Nm
- H6** = Drehrichtung der Welle für steigende Positionswerte Direction of shaft rotation for ascending position values



70E	φ 14 H7	φ 14 g7	14
70C	φ 12 H7	φ 12 g7	14
70B	φ 10 H7	φ 10 g7	14
70D	φ 9,52 H7	φ 9,52 g7	14
70A	φ 8 H7	φ 8 g7	14
WELLA1	D	d	KUPPA1

Original drawing		ECN/EQN 4xx		ID number:
Scale	Format	ECN/EQN 4xx		Change No. C172391-15
Dimensions in mm	1:1	Anschlussmaße / Mating Dimensions		Phase: Serie
The reproduction, distribution and utilization of this document as well as the communication of its contents to others without express authorization is prohibited. Offenders will be held liable for the payment of damages. All rights reserved in the event of the grant of a patent, utility model or design. (ISO 16016)				Tolerances as per ISO 8015
General Tolerances ISO 2768:1989-mH ± 6mm: ± 0,2				Released
HEIDENHAIN DR. JOHANNES HEIDENHAIN GmbH 83301 Traunreut, Germany		06.10.2025	Version Revision Sheet Page	1 of 1
		D 541096-06 - B-01		Document number