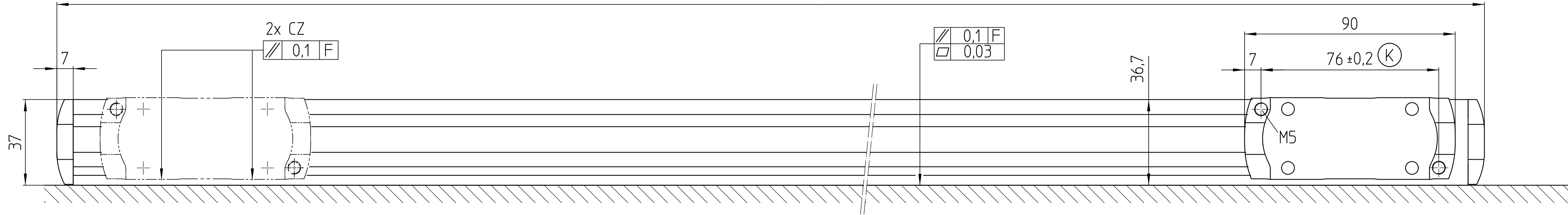
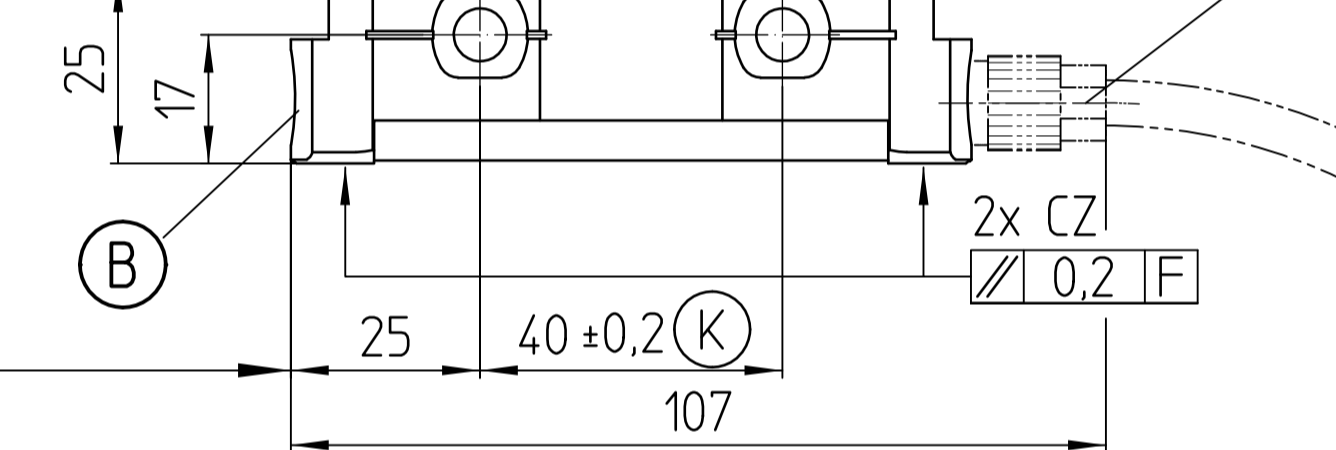
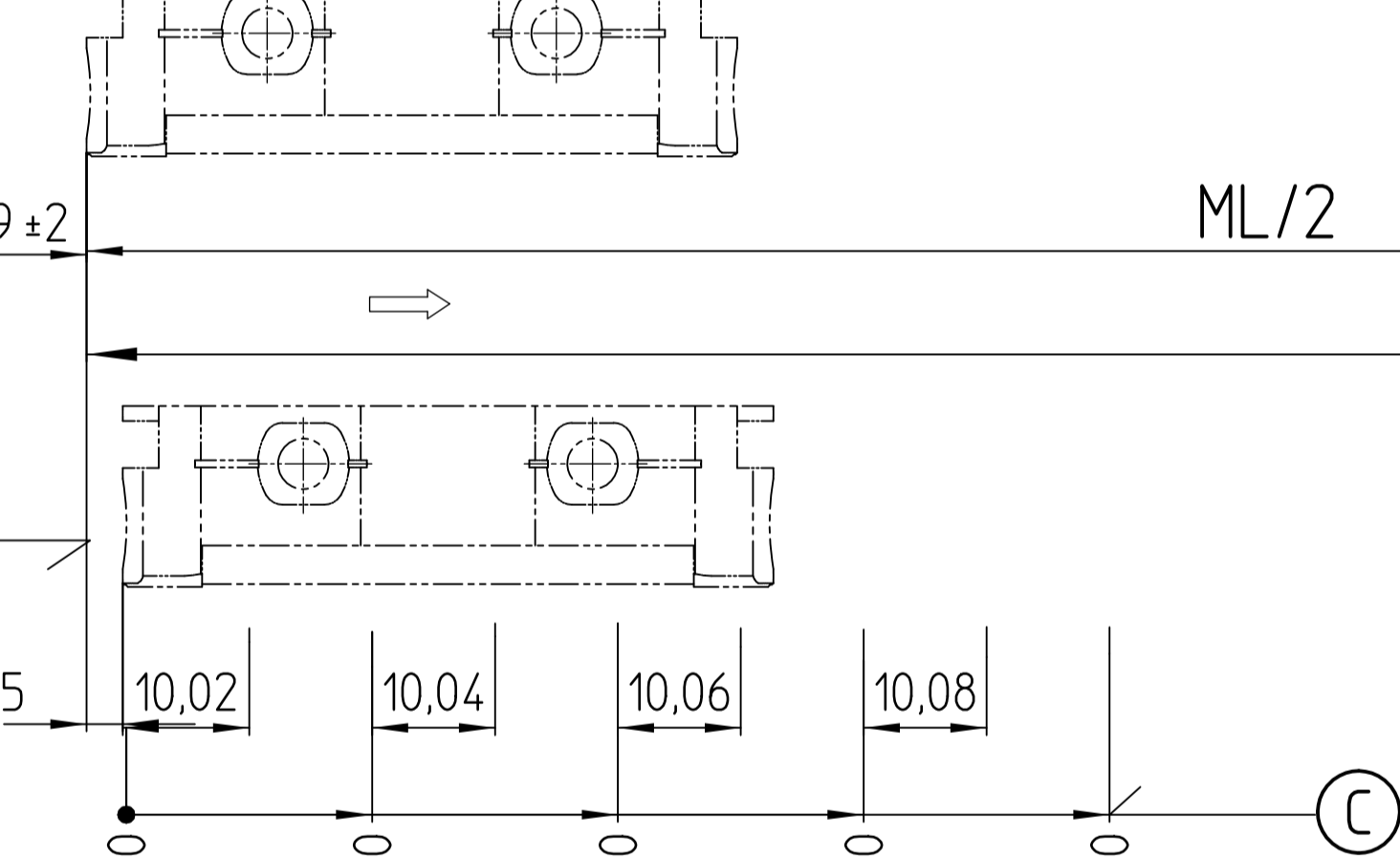
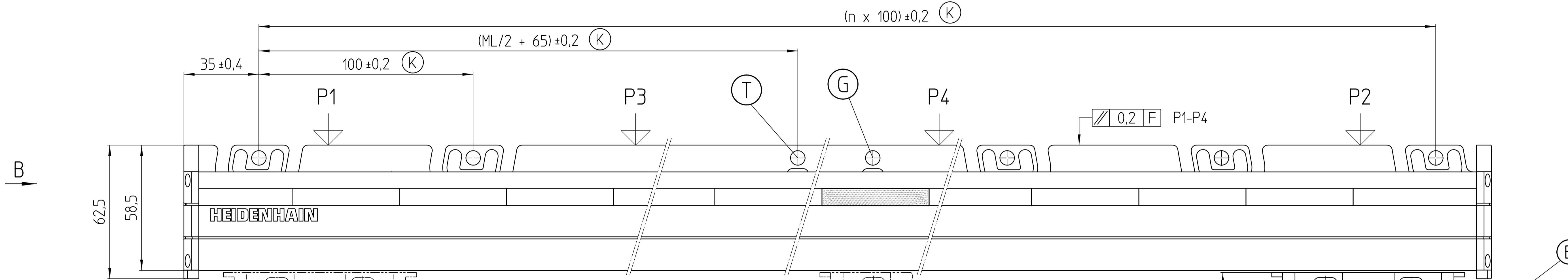


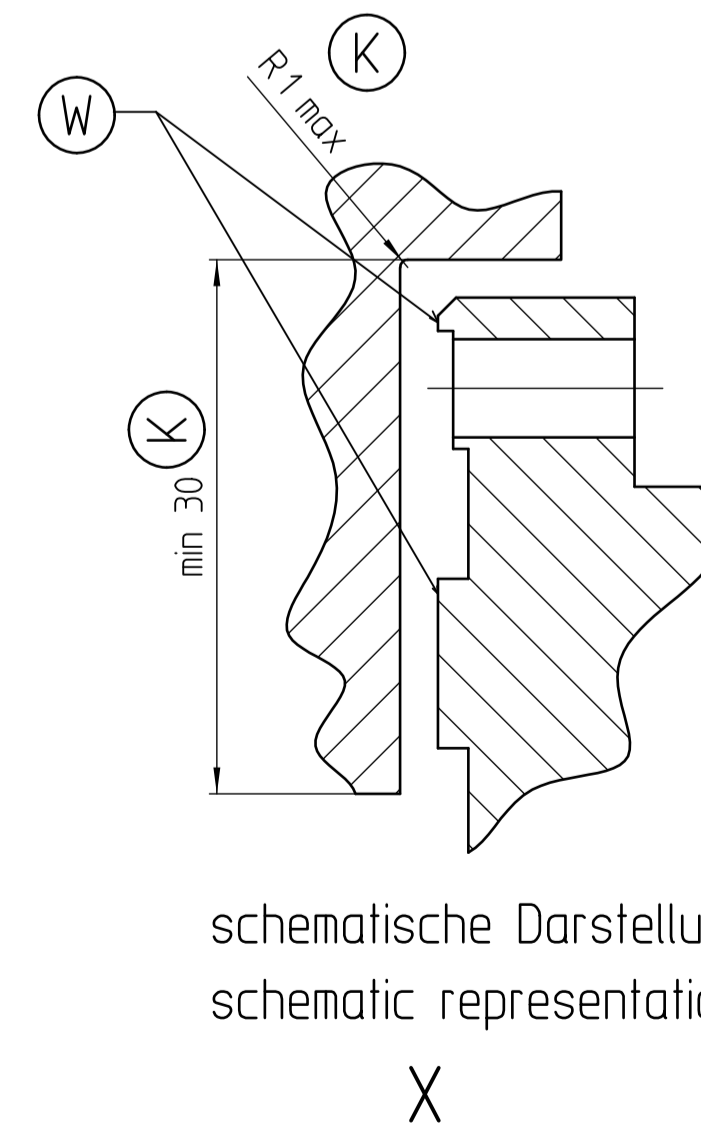
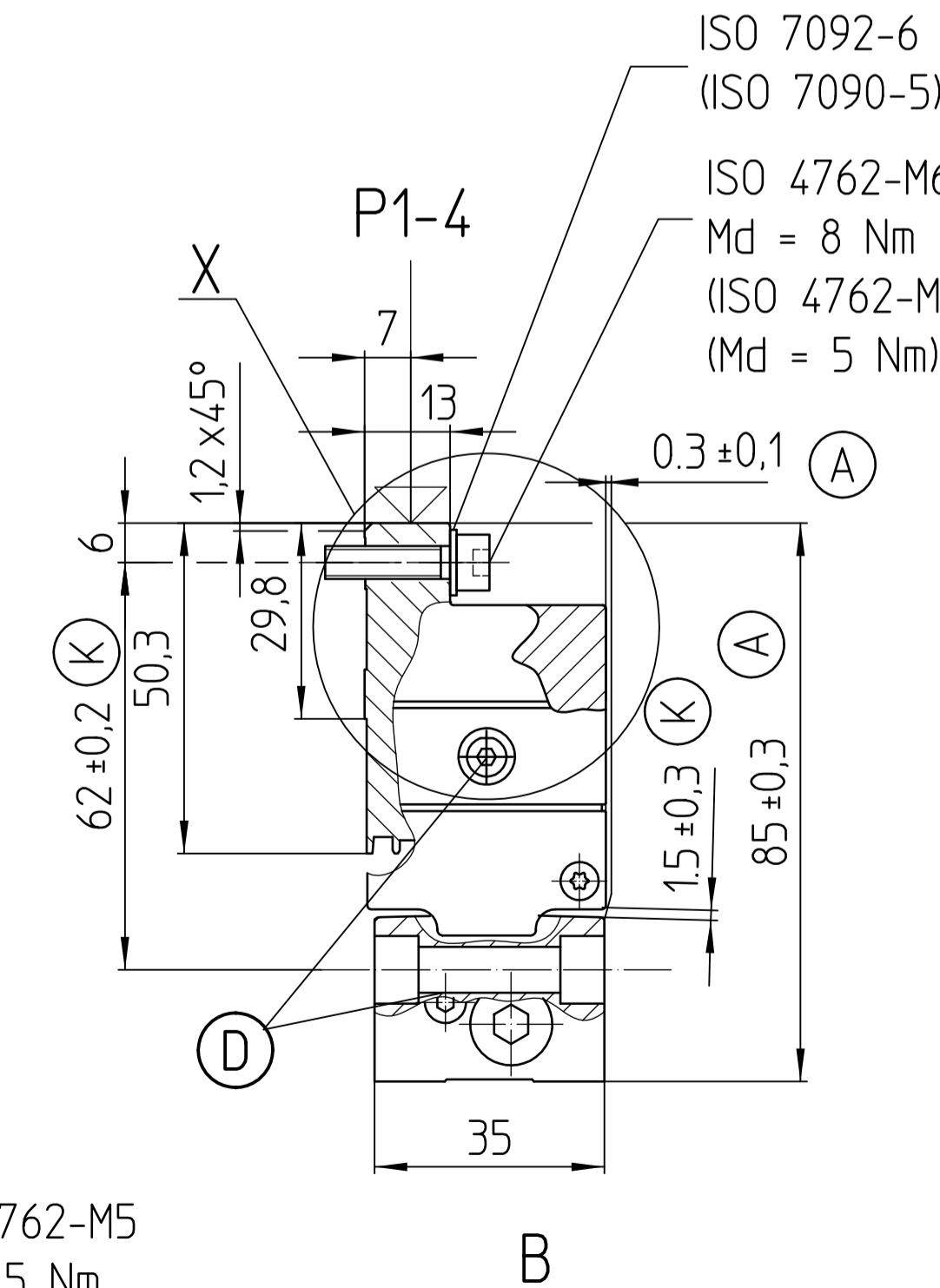
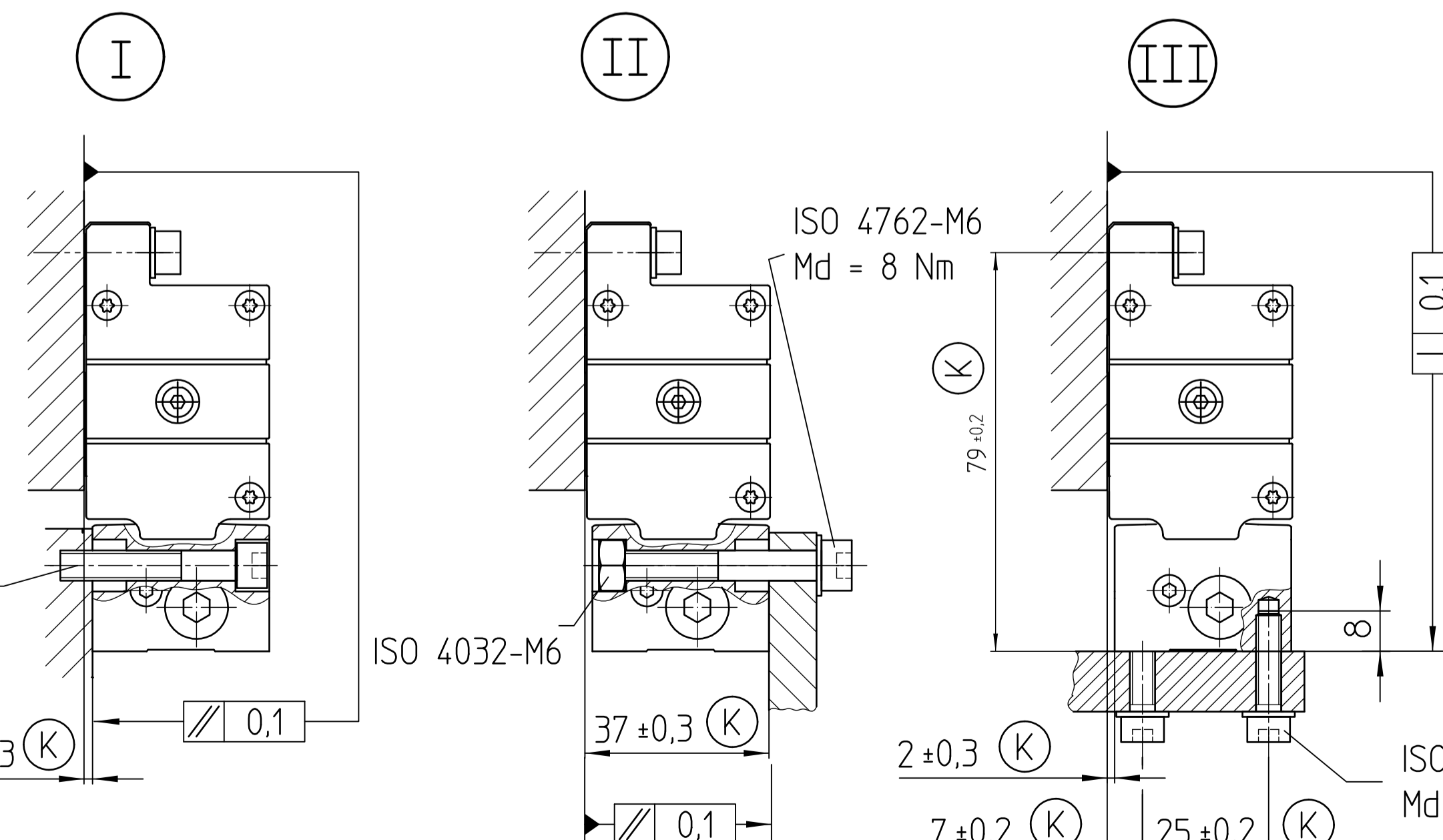
(ML + 121) ±0,7



(n x 100) ±0,2 (K)



- (I) (II) (III) = Montagemöglichkeiten Mounting possibilities
- F = Maschinenführung Machine guideway
- P = Messpunkte zum Ausrichten Gauging points for alignment
- (K) = Kundenseitiges Anschlussmaß Required mating dimensions
- (A) = Alternatives kundenseitiges Anschlussmaß Alternative mating dimensions
- (B) = Kabelanschluss Cable connection usable at either end
- (D) = Druckluftanschluss Compressed air inlet usable at either end
- (T) = Mechanischer Fixpunkt bevorzugt zu verwenden Mechanical fixed point, (to be preferred)
- (G) = Mechanischer Fixpunkt im 100mm Raster Mechanical fixed point (coincides with the spacing interval of 100mm)
- (W) = Anlageflächen Mating surfaces
- (S) = Beginn der Messlänge ML (=20mm absolut) Beginning of measuring length ML (=20mm absolute)
- (R) = Referenzmarken-Lage LS 107/ LS 177/ LS 187 Reference mark position LS 107/ LS 177/ LS 187
- (C) = Referenzmarken-Lage LS 107C/ LS 177C/ LS 187C Reference mark position LS 107C/ LS 177C/ LS 187C
- = Bewegungsrichtung der Abtasteinheit Ausgangssignale gemäß Schnittstellen-Beschreibung Direction of scanning unit motion for output signals in accordance with interface description
- ML = Messlänge Measuring length



schematische Darstellung
schematic representation
X

ML	P	
≤ 840	P1,P2	Punkte gleichmäßig entlang des Profils verteilen
≤ 1740	P1,P2,P3	Points uniformly distributed along the profile
≤ 3040	P1,P2,P3,P4	

Original drawing Scale Format		LS 177/177C/187/187C	Drummer: R7024
Toleranz nach DIN ISO 8015 Tolerances as per DIN ISO 8015		Release number: R7024	
Allgemeintoleranzen ISO 2768-MS ±0,20mm - 0,2 General tolerances ISO 2768-MS ±0,20mm - 0,2		The reproduction, distribution and utilization of this document as well as the communication of its contents to others without express authorization is prohibited. Offenders will be held liable for the payment of damages. All rights reserved in the event of the grant of a patent, utility model or design. © ISO 8015	
Version Revision Sheet		Version Revision Sheet	
HEIDENHAIN DR. JOHANNES HEIDENHAIN GmbH 83301 Traunreut, Germany		D 530295 - 04 - A - 01 1 of 1	