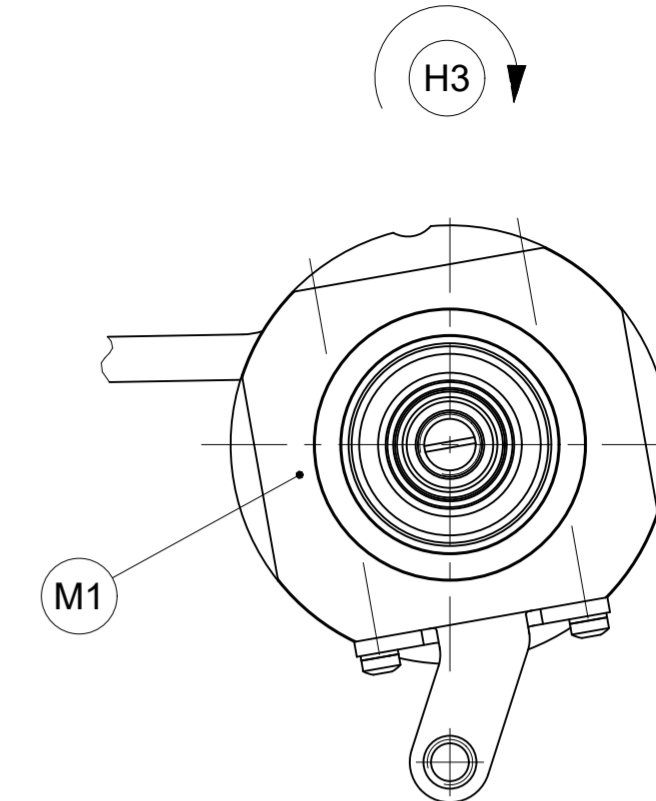
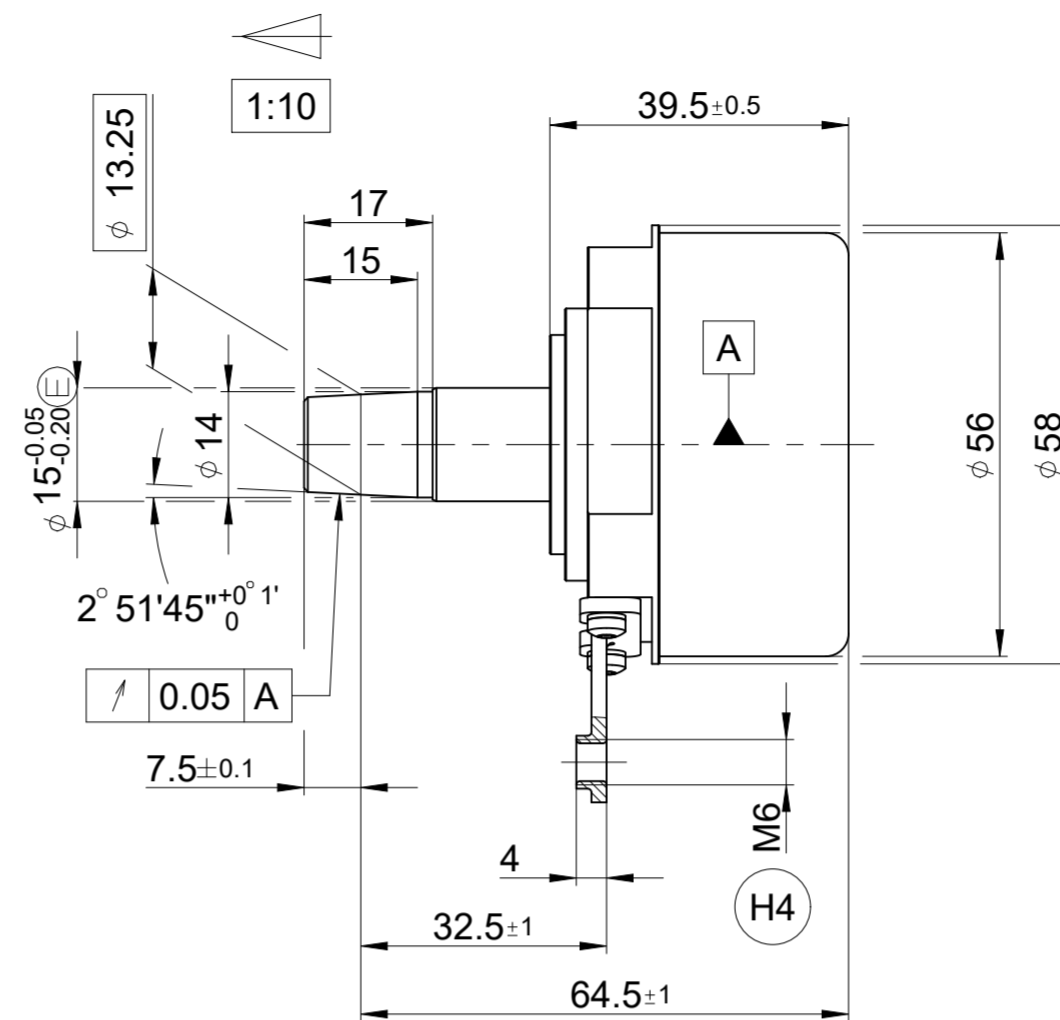
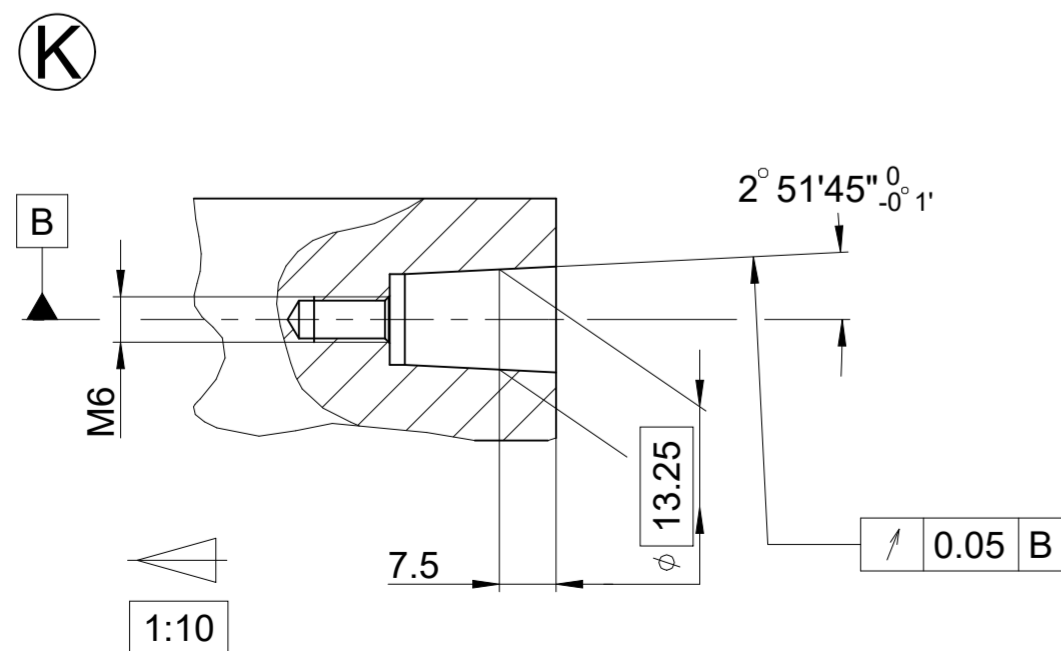
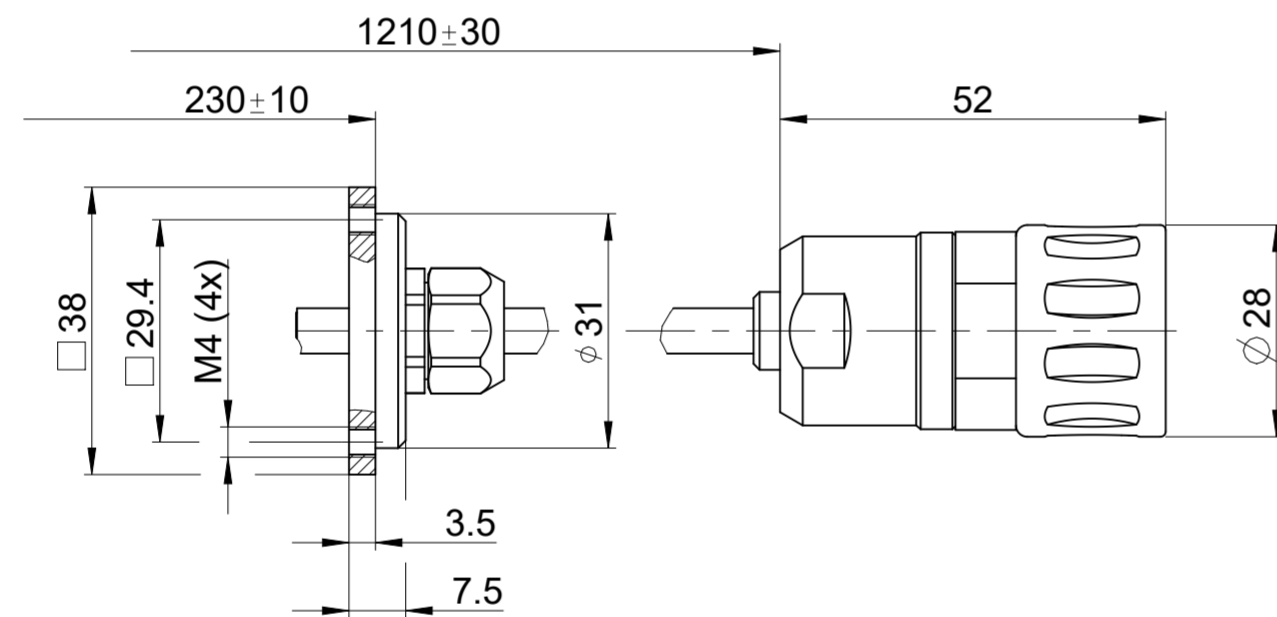
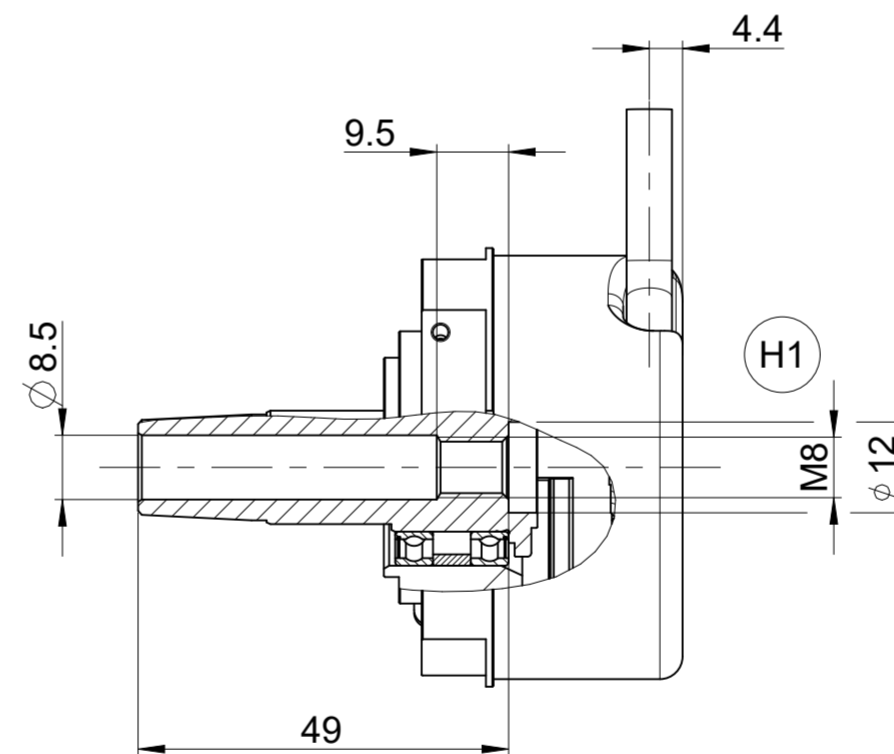


ANELA1: 02S09



- A** = Lagerung Geber  
Bearing of encoder
- B** = Lagerung Kundenwelle  
Bearing of mating shaft
- K** = Kundenseitige Anschlussmaße  
Required mating dimensions
- M1** = Messpunkt Arbeitstemperatur  
Measuring point for operating temperature
- M2** = Messpunkt Vibration  
Measuring point for vibration
- H1** = Abdrückgewinde  
Back-off thread
- H2** = Verschlusschraube, SW 3 und 4; Anzugsmoment: 5 Nm +1 Nm  
Locking screw, width A/F 3 and 4; tightening torque: 5 Nm +1 Nm
- H3** = Drehrichtung der Welle für Ausgangssignale gemäß Schnittstellenbeschreibung  
Direction of shaft rotation for output signals as per the interface description
- H4** = Die statorseitige Anbindung ist vom Kunden auszulegen  
The customer must design how the encoder is connected on the stator side



89A	43	02S09 40S17
WELLA1	KUPPA1	ANELA1

Original drawing		ERN 4xx		ID number:
Scale	Format	ERN 4xx		Change No. C191406-05
Dimensions in mm	1:1	A2	Anschlussmaße / Mating Dimensions	Phase: Serie
The reproduction, distribution and utilization of this document as well as the communication of its contents to others without express authorization is prohibited. Offenders will be held liable for the payment of damages. All rights reserved in the event of the grant of a patent, utility model or design. (ISO 16016)				Tolerances as per ISO 8015
General Tolerances ISO 2768:1989-mH ±0.2				
Released		Version	Revision	Sheet
18.05.2026				Page
HEIDENHAIN		D 511520-04 - A-01		1 of 1
DR. JOHANNES HEIDENHAIN GmbH 83301 Traunreut, Germany		Document number		