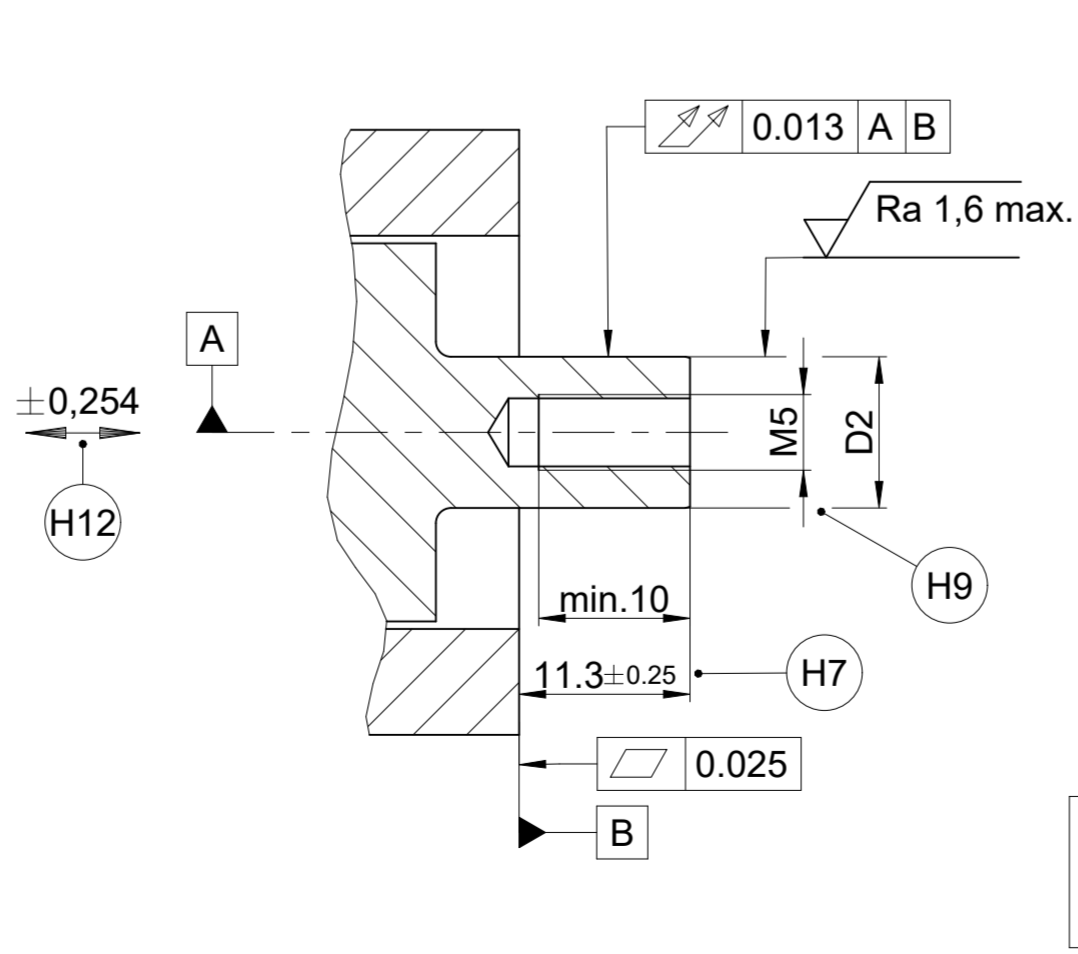
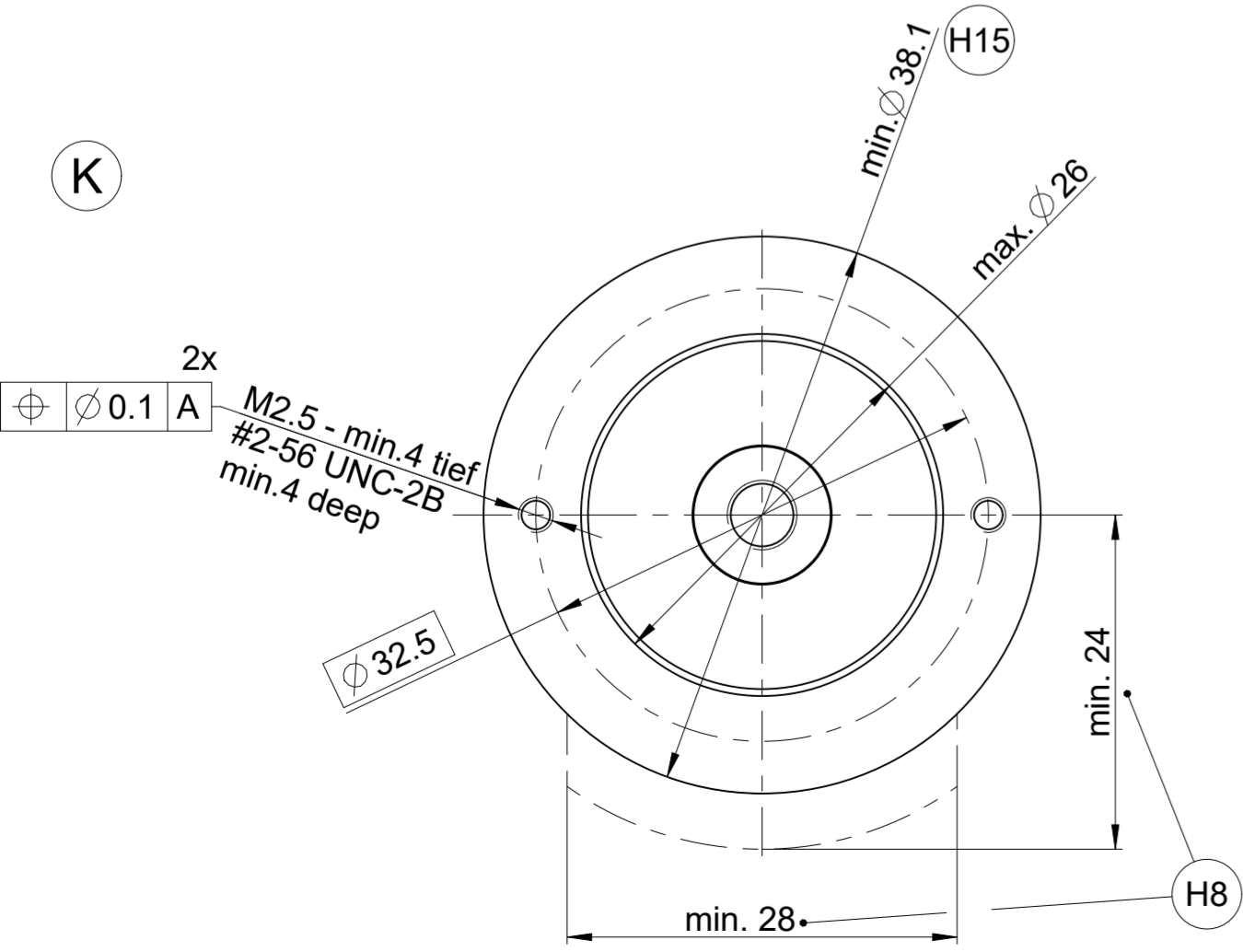


- H1 = Kappe FOKAA1= H
Cover FOKAA1= H
- H2 = Kappe FOKAA1= SH
Cover FOKAA1= SH
- H3 = Stiflleiste 15-pol. axial
15-pin male header (axial)
- H4 = Stiflleiste 15-pol. radial
15-pin male header (radial)
- H5 = Zugentlastung FOKAA1=SC / SH
Strain relief FOKAA1= SC / SH
- H6 = Bügel in Montagestellung
Slide lock in mounting position
- H7 = Max. Maß für FOKAA1= C / SC
Max. dimension for FOKAA1= C / SC
- H8 = Erforderlicher Einbauraum
Required installation space
- H9 = Nabenbefestigung
Zentrierung durch
-Tellerfeder 733484-01
-M5,0x10 ID 200507-6F
Anzugsmoment 3,5±0,25 Nm
Nabenklebung Loctite 290
Hub centering through
-diaphragm spring 733484-01
-M5,0x10 ID 200507-6F
torque 3,5±0,25 Nm
hub bonding Loctite 290
- H10 = Befestigungsschraube / Mounting screw
- M2.5 x 5.25, ID 548595-02 Torx T8
- #2-56 UNC x 5.25, ID 548595-03 Torx T8
Anzugsmoment / tightening torque: 0.21 ±0.02 Nm
- H11 = Maßangabe für JH-Standardkabel
Dimension for HEIDENHAIN standard cable
- H12 = Ausgleich von Montagetoleranzen und thermischer
Ausdehnung
Compensation of mounting tolerances and thermal
expansion
- H13 = Referenzmarken-Lage ±10°
Referenze mark position ±10°
- H14 = Drehrichtung der Welle für Ausgangssignale
gemäß Schnittstellen-Beschreibung
Direction of shaft rotation for output signals
as per interface description
- H15 = Flanschauflage - ganzflächige Auflage im
Anschraubbereich beachten!
Flange surface: ensure full-surface
contact in the screw-on area!



- A = Lagerung Kundenwelle
Bearing of mating shaft
- K = Kundenseitige Anschlussmaße
Required mating dimensions
- M = Messpunkte Arbeitstemperatur
Measuring points for operating temperature

R35i	C/H/ SC/SH	10	1PA	$\phi 10$	$\phi 9,99$
NAMEA1	FOKAA1	NADUA1	WELLA1	$D1^{+0,01} \text{ E}$	$D2_{-0,013} \text{ E}$

Original drawing		R35i RENCO NADUA1=10mm WELLA1=1PA WERK		ID number:	
Scale	2:1	Format	A2	Change No.	C155950-05
Dimensions in mm			Phase:		
Tolerances as per ISO 8015			Serie		
General Tolerances ISO 2768:1989-mH ± 0.2			Anschlussmaße / Mating Dimensions		
The reproduction, distribution and utilization of this document as well as the communication of its contents to others without express authorization is prohibited. Offenders will be held liable for the payment of damages. All rights reserved in the event of the grant of a patent, utility model or design. (ISO 16016)					
Released		Version		Revision	Sheet
02.05.2023		D 388629-03-A-01		Page 1 of 1	
Document number					

HEIDENHAIN
DR. JOHANNES HEIDENHAIN GmbH
83301 Traunreut, Germany

896 200 A2