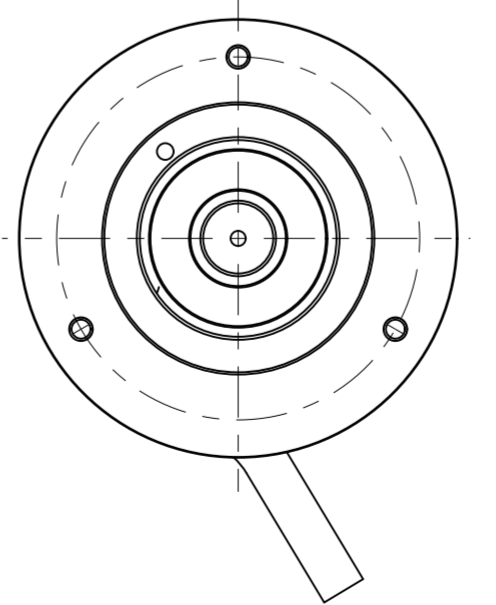
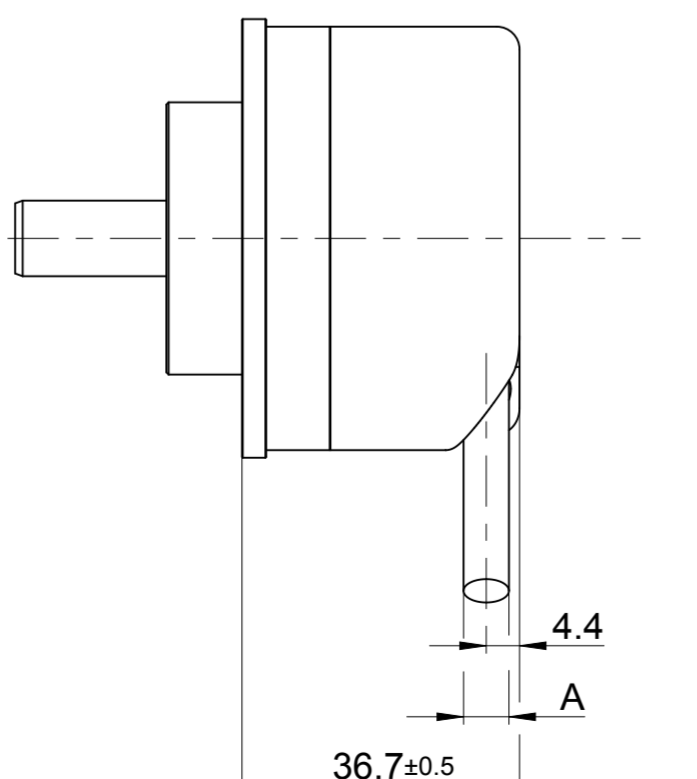
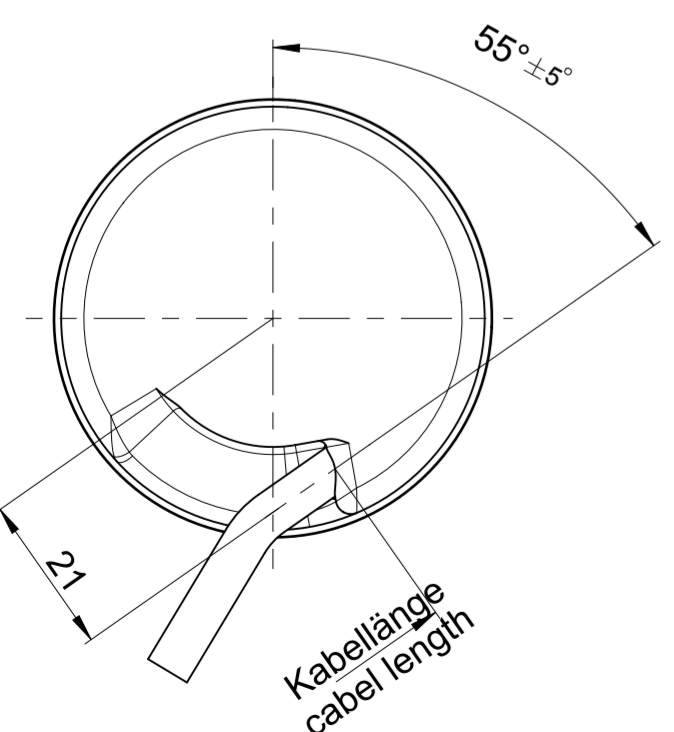


Generation 3.1	ROC / ROQ	512 Striche / Lines
Generation 3.2	ROC / ROQ	512 / 2048 Striche / Lines

- A** = Lagerung Geber      Bearings for encoder
- B** = Befestigungsgewinde      Threaded mounting hole
- M** = Messpunkt Arbeitstemperatur      Operation temperature measuring point
- H1** = ROD Referenzmarkenlage Welle - Flansch ±15°      ROD reference mark position shaft - flange ±15°
- H2** = Umstellung der Gewindetiefe von 5mm auf 7 bzw 9mm ist in Umsetzung seit November 2011      Change of thread depth from 5mm to 7 or 9mm is currently being implemented since november 2011



KABEA2	A
01	∅ 4,5
02	∅ 6

01J	03B	M3 - 7+1 tief/depth (M3 - 5 tief/depth)	H2
01J	03C	M4 - 9+1 tief/depth (M4 - 5 tief/depth)	
WELLA1	FLANA1	a	ID number:
			Release number: R8678
Original drawing Scale: 1:1      Format: A2 ROD 4xx / ROC, ROQ 4xx Anschlussmaße			Tolerierung nach DIN ISO 8015 Tolerances as per DIN ISO 8015
			Allgemeintol. ISO 2768-mH ±6mm:±0,2 General tol. ISO 2768-mH ±6mm:±0,2
The reproduction, distribution and utilization of this document as well as the communication of its contents to others without express authorization is prohibited. Offenders will be held liable for the payment of damages. All rights reserved in the event of the grant of a patent, utility model or design. (ISO 16016)			
<b>HEIDENHAIN</b> DR. JOHANNES HEIDENHAIN GmbH 83301 Traunreut, Germany			Version   Revision   Sheet   Page <b>D 372713-07-A-01</b> Document number      1 of 1