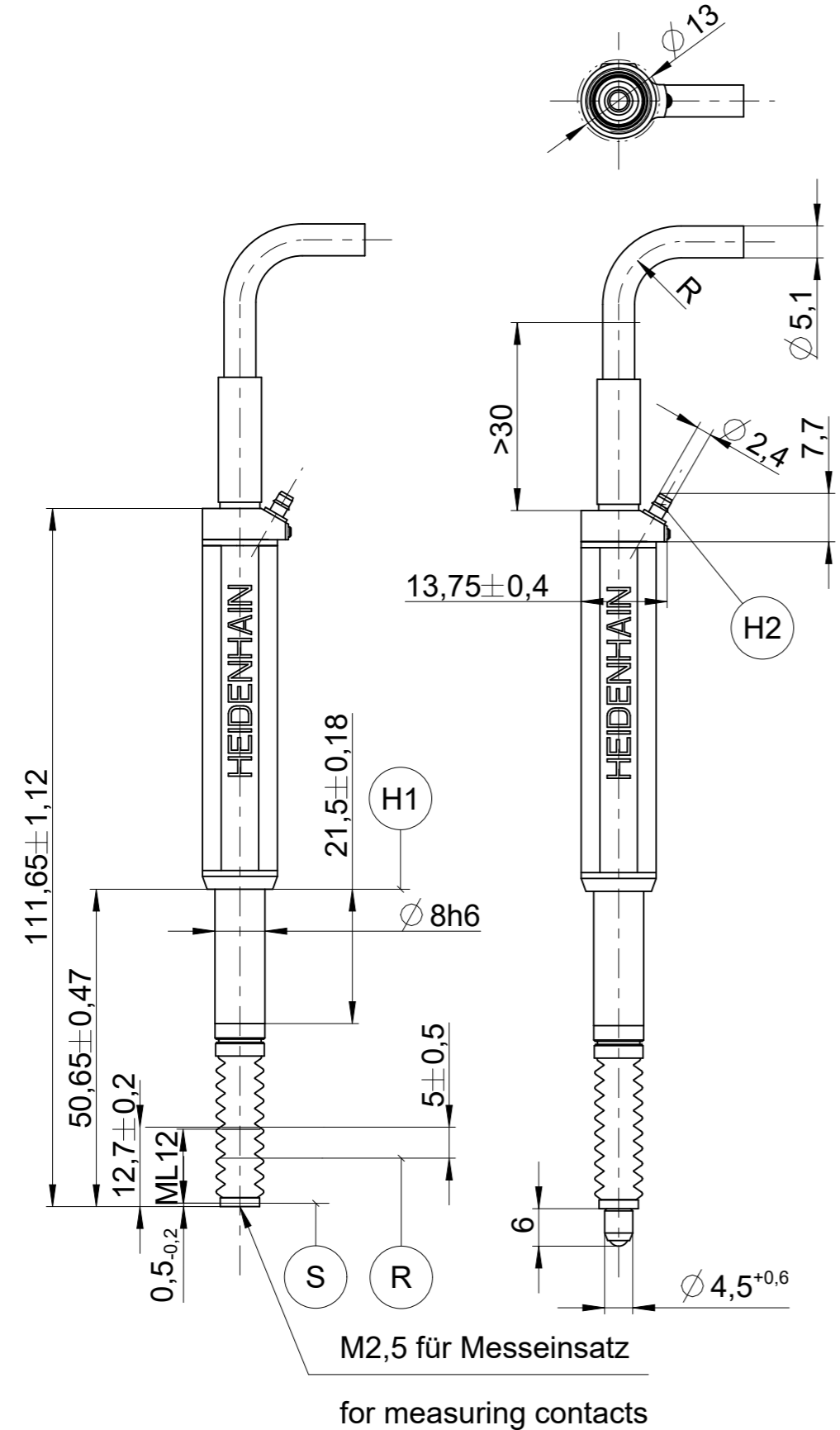
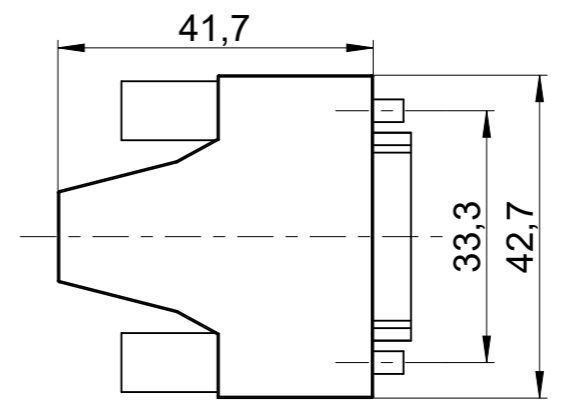


Modellname: 383972-01A1 Version: ***

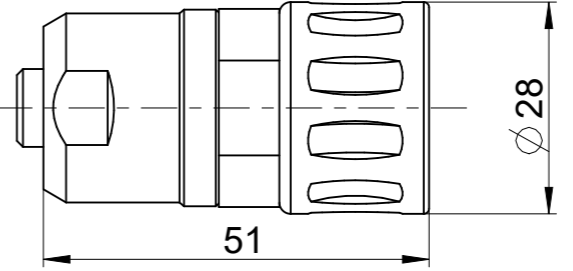
886 200 A3



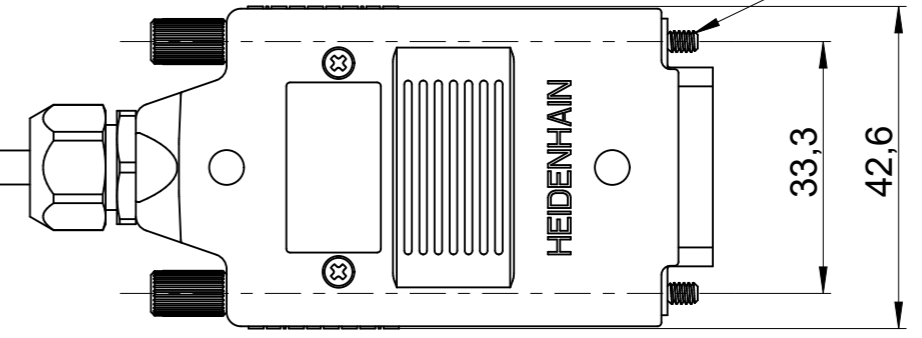
- (H1) = Klemmbereich tightening zone
- (H2) = Luftanschluss für 2 mm Schlauch air supply for 2 mm tube
- (R) = Referenzmarken-Lage Reference mark position
- (S) = Beginn der Messlänge ML Beginning of measuring length ML



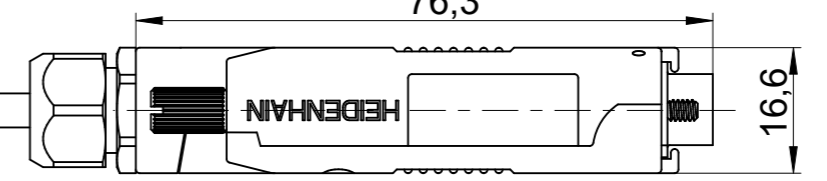
ST 1205/1207
ST 1285/1287



UNC 4/40



ST 1275/1277



| | |
|---|-----------------------------------|
| ST 1205 | 511735- |
| ST 1287 (Sub-D) | 384005- |
| ST 1287 | 383975- |
| ST 1277 | 383973- |
| ST 1207 | 383972- |
| ID number: 383972-01 | |
| Change No. Serie | |
| Phase: Serie | |
| Tolerierung nach DIN ISO 8015 Tolerances as per DIN ISO 8015 | |
| Allgemeintol. ISO 2768-mH ≤6mm:±0,2 General tol. ISO 2768-mH ≤6mm:±0,2 | |
| | Original drawing |
| Scale | Format |
| 1:1 | A3 |
| ST 12x3/5/7 axial Redesign | |
| ST 12x7 axial gekrümmt | |
| Anschlussmaße / Mating Dimensions | |
| The reproduction, distribution and utilization of this document as well as the communication of its contents to others without express authorization is prohibited. Offenders will be held liable for the payment of damages. All rights reserved in the event of the grant of a patent, utility model or design. (ISO 16016) | |
| HEIDENHAIN | Version Revision Sheet Page |
| DR. JOHANNES HEIDENHAIN GmbH | D 363606-01 - G - 1 |
| 83301 Traunreut, Germany | 1 of 1 |
| Document number | |