

(R) = Referenzmarkenlage

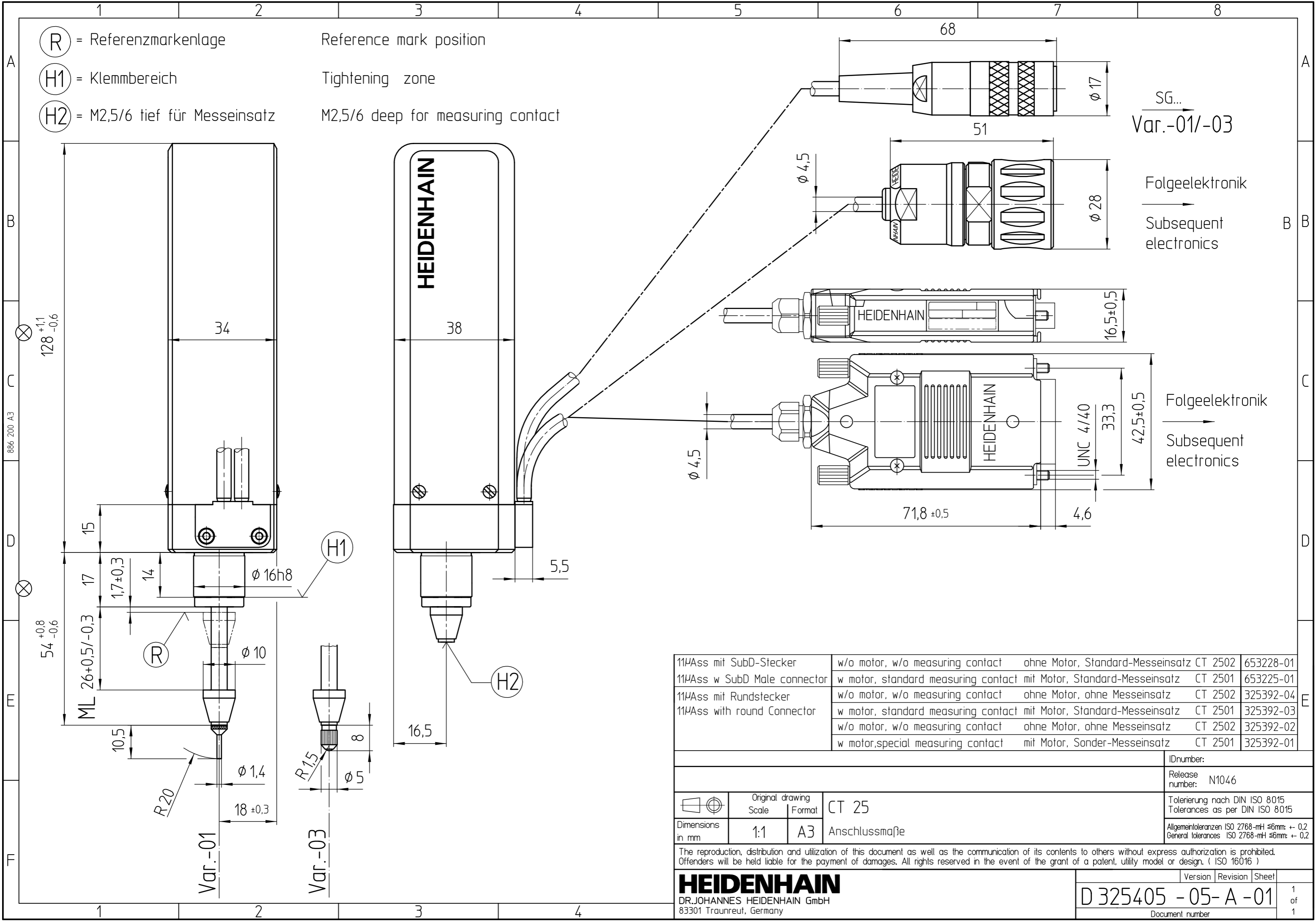
Reference mark position

(H1) = Klemmbereich

Tightening zone

(H2) = M2,5/6 tief für Messeinsatz

M2,5/6 deep for measuring contact



SG...
Var.-01/-03

Folgeelektronik
Subsequent electronics

Folgeelektronik
Subsequent electronics

11µAss mit SubD-Stecker	w/o motor, w/o measuring contact	ohne Motor, Standard-Messeinsatz CT 2502	653228-01
11µAss w SubD Male connector	w motor, standard measuring contact	mit Motor, Standard-Messeinsatz CT 2501	653225-01
11µAss mit Rundstecker	w/o motor, w/o measuring contact	ohne Motor, ohne Messeinsatz CT 2502	325392-04
11µAss with round Connector	w motor, standard measuring contact	mit Motor, Standard-Messeinsatz CT 2501	325392-03
	w/o motor, w/o measuring contact	ohne Motor, ohne Messeinsatz CT 2502	325392-02
	w motor, special measuring contact	mit Motor, Sonder-Messeinsatz CT 2501	325392-01

		IDnumber:
		Release number: N1046
Original drawing Scale Format		CT 25
Dimensions in mm		1:1 A3 Anschlussmaße
		Tolerierung nach DIN ISO 8015 Tolerances as per DIN ISO 8015
		Allgemeintoleranzen ISO 2768-mH ±0,2mm General tolerances ISO 2768-mH ±0,2mm

The reproduction, distribution and utilization of this document as well as the communication of its contents to others without express authorization is prohibited. Offenders will be held liable for the payment of damages. All rights reserved in the event of the grant of a patent, utility model or design. (ISO 16016)