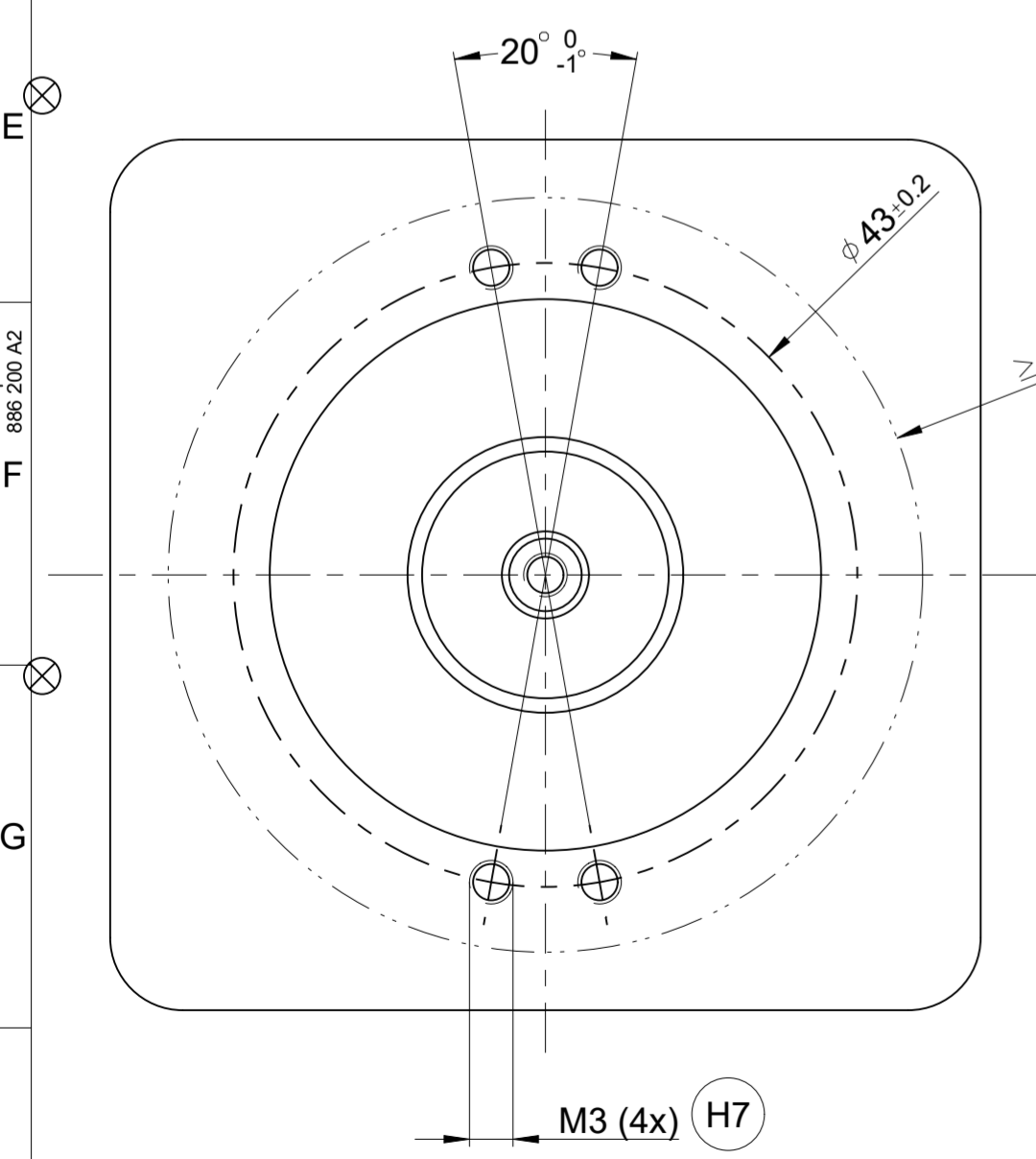
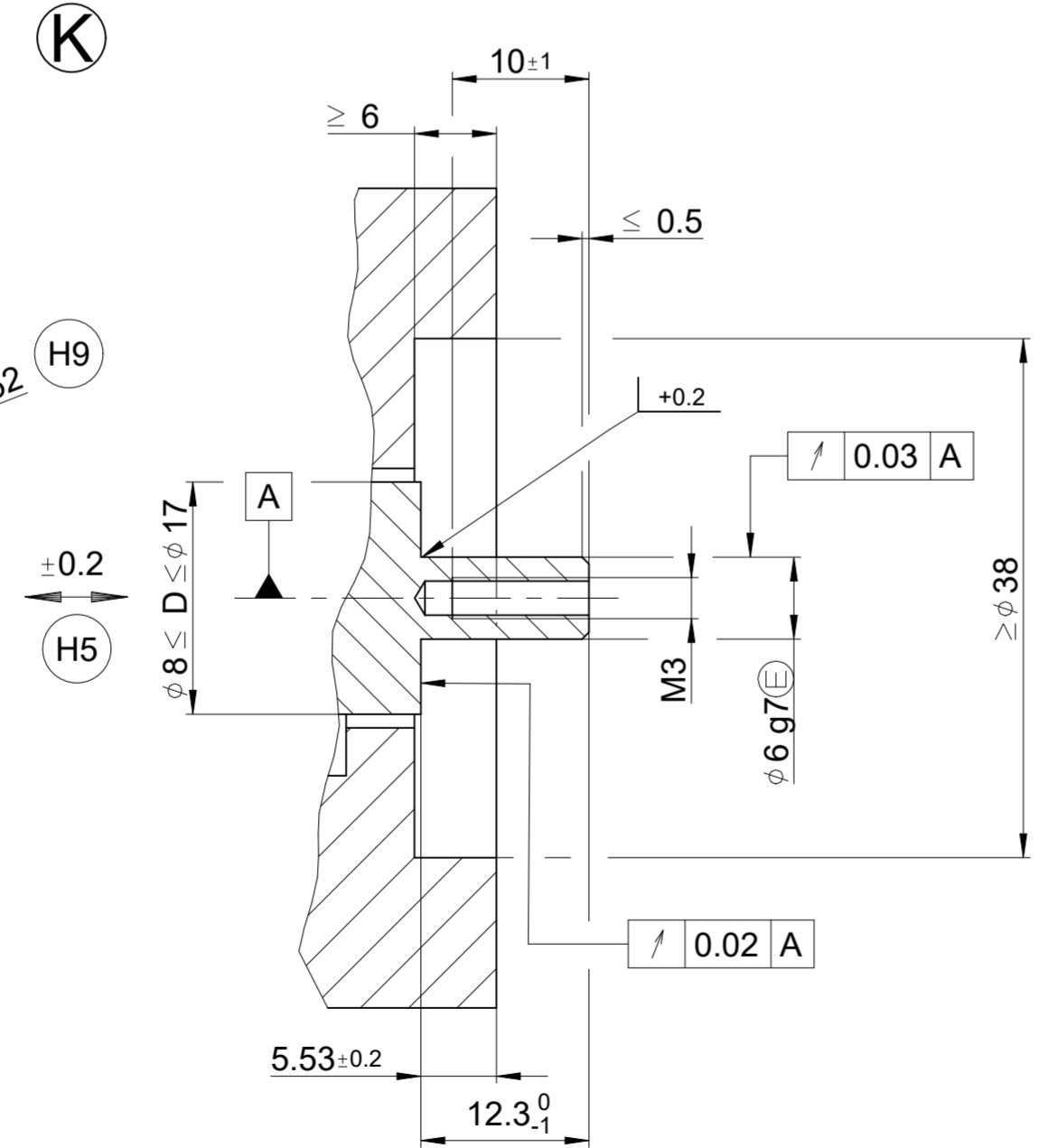


- A = Lagerung Kundenwelle Bearing of mating shaft
- K = Kundenseitige Anschlussmaße Required mating dimensions
- M1 = Messpunkt Arbeitstemperatur Measuring point for operating temperature
- M2 = Messpunkt Vibration Measuring point for vibration
- H1 = Abnehmbarer Deckel Removeable cover
- H2 = Geber ohne Deckel dargestellt Encoder shown without cover
- H3 = Befestigung für Kabel mit Crimp-Hülse $\phi 4,3 \pm 0,1$; 7 lang Fastener for cable with crimp sleeve $\phi 4.3 \text{ mm} \pm 0.1 \text{ mm}$; 7 mm long
- H4 = Schraube, z.B. DIN EN ISO 4762 - 8.8
ERN/ECN: M3x10 (z.B. ID 202264-31)
EQN: M3x25 (z. B. ID 202264-26)
Anzugsmoment: 1,2 Nm $\pm 0,1$ Nm Screw, e.g., DIN EN ISO 4762 - 8.8
ERN/ECN: M3x10 (e.g., ID 202264-31)
EQN: M3x25 (e.g., ID 202264-26)
Tightening torque: 1.2 Nm ± 0.1 Nm
- H5 = Ausgleich von Motagetoleranzen und thermischer Ausdehnung, keine dynamische Bewegung zulässig Compensation of mounting tolerances and thermal expansion; no dynamic motion permitted
- H6 = Stiftleiste 15-polig JAE
ERN 1185: Stiftleiste 14-polig FCI JAE header, 15-pin
ERN 1185: FCI header, 14-pin
- H7 = Befestigungsgewinde
Anbau mit 4 Schrauben (z. B. M3x6 ISO 4762 - 8.8) und 4 Scheiben (z. B. ISO 7092 - StZn - 3.00); Anzugsmoment: 1,0 Nm $\pm 0,1$ Nm Fastening thread
Mounting with 4 screws (e.g., M3x6 ISO 4762 - 8.8) and 4 washers (e.g., ISO 7092 - StZn - 3.00); tightening torque: 1.0 Nm ± 0.1 Nm
- H8 = Drehrichtung der Welle für Ausgangssignale gemäß Schnittstellenbeschreibung Direction of shaft rotation for output signals as per the interface description
- H9 = Einbauraum Kupplung Installation space for coupling



EQN	27E	49	28D	48A	-----	29.15 ± 0.5	5.6 ± 0.65
ECN	27E	49	28D	48A	-----	16.25 ± 0.5	5.6 ± 0.65
ERN	27E	49	28D	48A	Z1	16.3 ± 0.5	5.55 ± 0.65
NAMEA1	WELLA1	FLANA1	KUPPA1	FOKAA1	ZUTEA1	L1	L2

Original drawing Scale: 2:1 Format: A2		ERN/ECN/EQN 11xx ERN/ECN/EQN 11xx Anschlussmaße / Mating Dimensions		ID number:
				Change No. C172391-06 Phase: Serie
Tolerances as per ISO 8015 General Tolerances ISO 2768:1989-mH ± 0.2				
The reproduction, distribution and utilization of this document as well as the communication of its contents to others without express authorization is prohibited. Offenders will be held liable for the payment of damages. All rights reserved in the event of the grant of a patent, utility model or design. (ISO 16016)				
HEIDENHAIN DR. JOHANNES HEIDENHAIN GmbH 83301 Traunreut, Germany		Released: 18.03.2026	Version Revision Sheet Page	1 of 1
D1475290-00-A-01 Document number				

896 200 A2