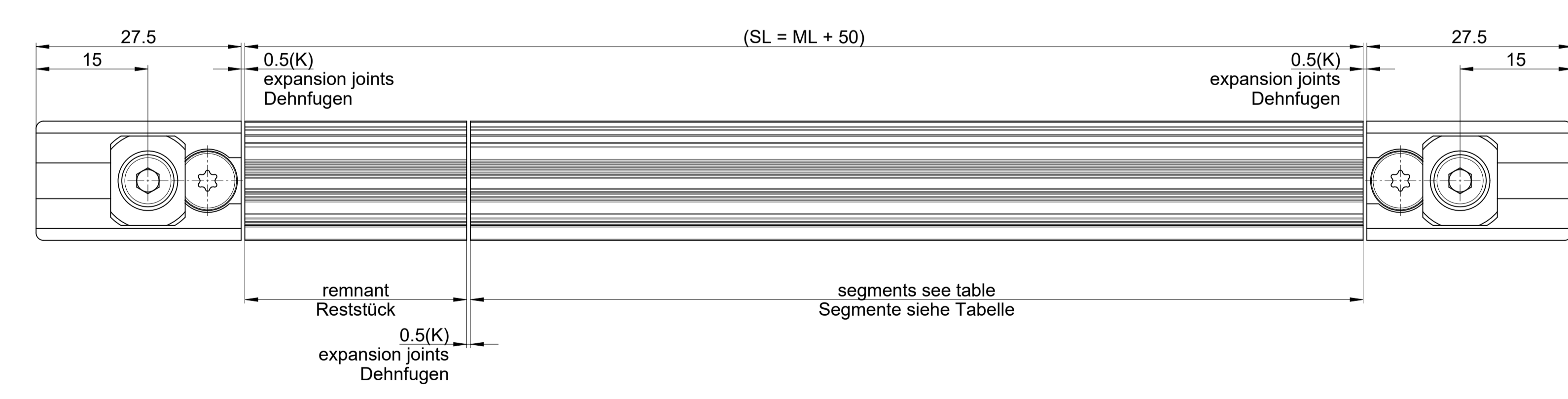
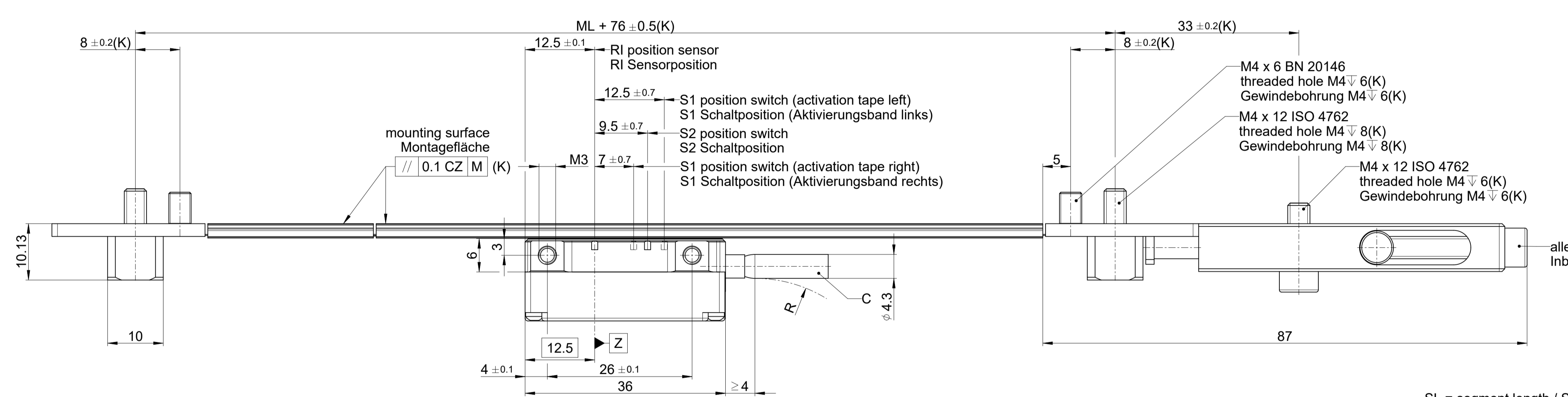
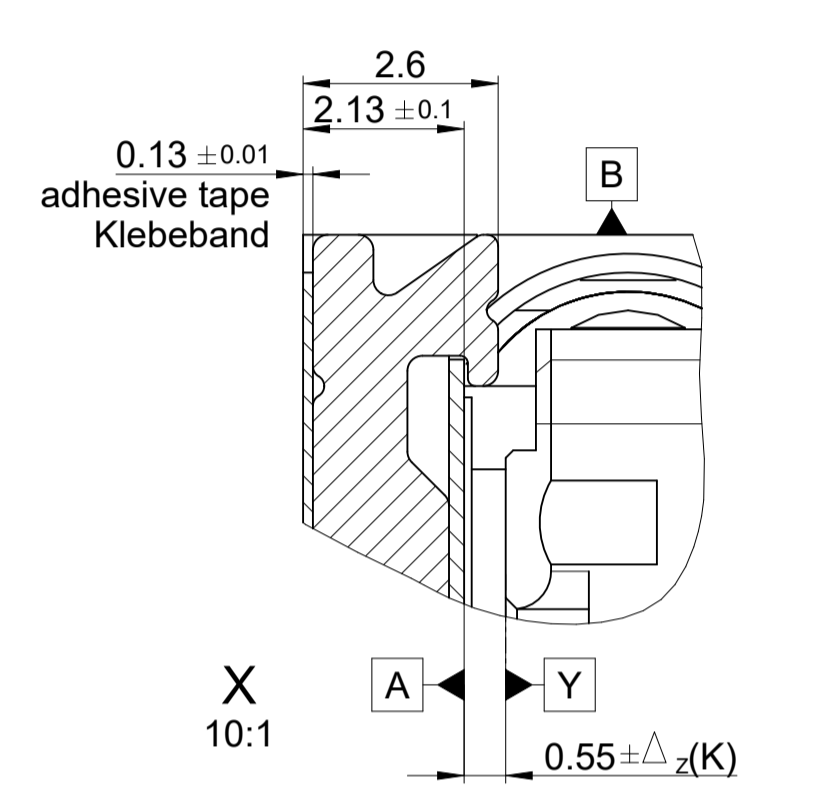
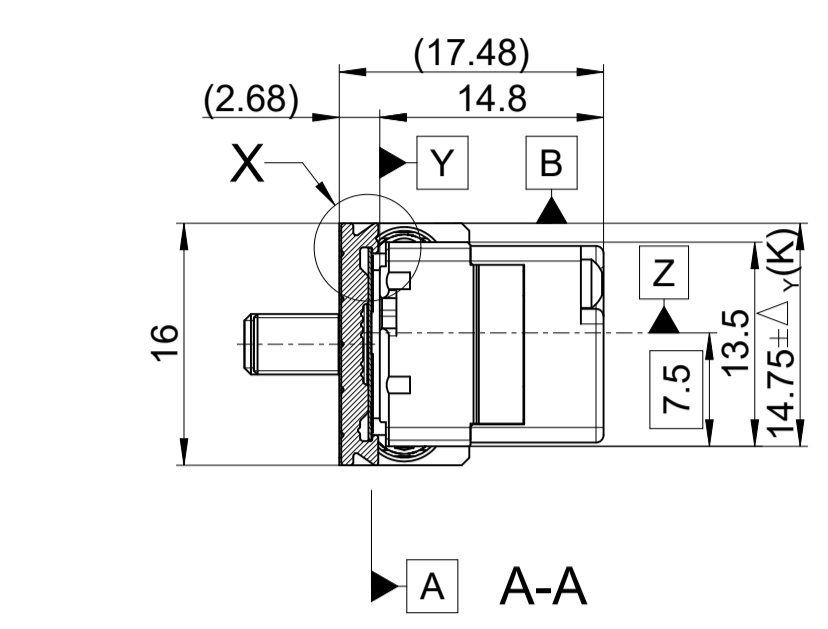
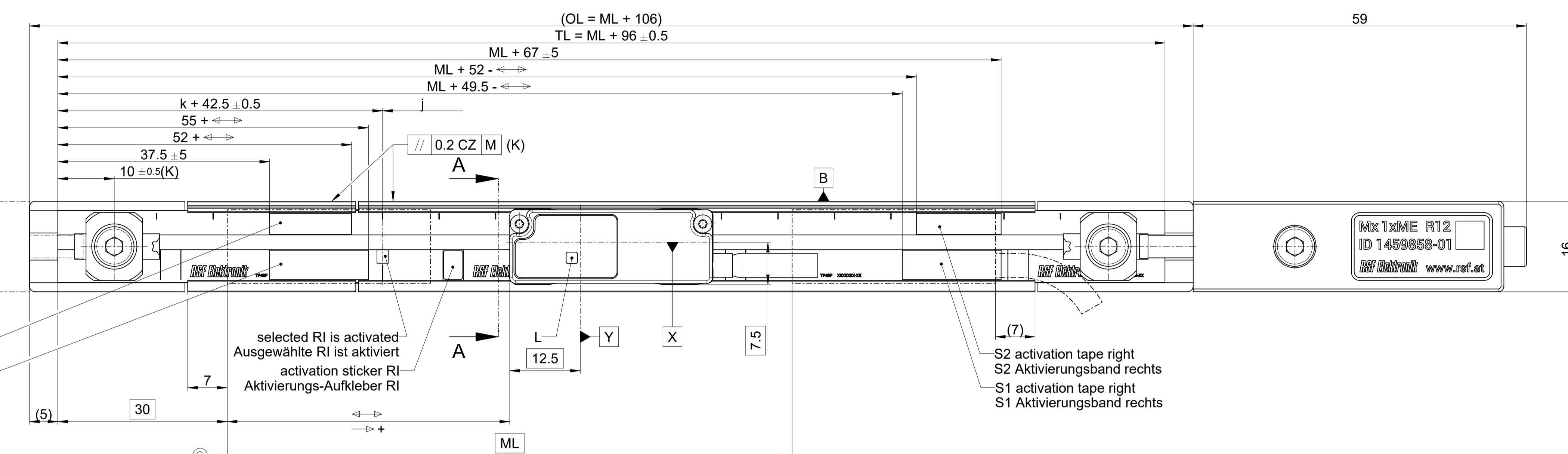


Optional mounting of tensioning device
Optionale Montage der Spanneinrichtung

S2 activation tape left
S2 Aktivierungsband links
S1 activation tape left
S1 Aktivierungsband links



SL = segment length / Segmentlänge
 ≥ 20 ... ≤ 1000 = 1x remnant / Reststück (≥ 20 ... ≤ 1000)
 >1000 ... ≤ 1500 = 1x 499,5 + 1x remnant / Reststück (>500 ... ≤ 1000)
 >1500 ... ≤ 2000 = 1x 999,5 + 1x remnant / Reststück (>500 ... ≤ 1000)
 >2000 ... ≤ 2500 = 1x 499,5 + 1x 999,5 + 1x remnant / Reststück (>500 ... ≤ 1000)
 >2500 ... ≤ 3000 = 2x 999,5 + 1x remnant / Reststück (>500 ... ≤ 1000)
 >3000 ... ≤ 3500 = 1x 499,5 + 2x 999,5 + 1x remnant / Reststück (>500 ... ≤ 1000)
 etc.
 M = machine guideway / Maschinenführung
 ML = measuring length / Messlänge
 OL = overall length / Gesamtlänge
 TL = tape scale length / Maßbandlänge
 ↔ = 0 ... ML
 → + = direction of motion of the scanning unit for ascending position values
 Bewegungsrichtung des Abtastkopfes für steigende Positionswerte
 ⊙ = beginning of the measuring length ML / Beginn der Messlänge ML
 RI = selectable reference mark(s) / wählbare Referenzmarke(n)
 k = any position of the selected reference mark starting from the beginning of the ML
 beliebige Position der ausgewählten Referenzmarke vom Beginn der ML
 j = additional reference marks selectable every 50mm
 zusätzliche Referenzmarken alle 50mm auswählbar
 C = cable / Anschlusskabel
 (K) = required mating dimensions / kundenseitige Anschlussmaße
 L = LED function control / LED Funktionskontrolle
 R = bending radius / Biegeradius stat. R ≥ 8mm, dyn. R ≥ 20mm
 S1, S2 = switch signal / Schaltsignal

Permissible position deviation scanning head - tape scale A B
 Zulässige Lageabweichungen Abtastkopf - Maßband A B
 $\Delta_z = \pm 0.2\text{mm}$ (gap / Abstand)
 $\Delta_y = \pm 0.5\text{mm}$ (lateral / Verschiebung)
 $f_z = \pm 1.00\text{mrad}$ or / oder $\pm 0.06^\circ$ (yaw angle / Gierwinkel)
 $f_y = \pm 3.50\text{mrad}$ or / oder $\pm 0.20^\circ$ (pitch angle / Nickwinkel)
 $f_x = \pm 4.00\text{mrad}$ or / oder $\pm 0.23^\circ$ (roll angle / Rollwinkel)

Original drawing		MS15 ME		ID number:	C171444-83
Scale		MS15 ME		Change No.	Nicht-Serie
Format		Anschlussmaße / Mating Dimensions		Phase	
Dimensions in mm	2:1 A1			Tolerances as per ISO 8015	
				General Tolerances ISO 2768:1989-mH	≤ 0.2
The reproduction, distribution and utilization of this document as well as the communication of its contents to others without express authorization is prohibited. Offenders will be held liable for the payment of damages. All rights reserved in the event of the grant of a patent, utility model or design. (ISO 18015)					
Released		Version / Revision / Sheet		Page	
23.06.2025		D1464394-00 - A-01		1 of 1	
www.rsf.at		Document number			