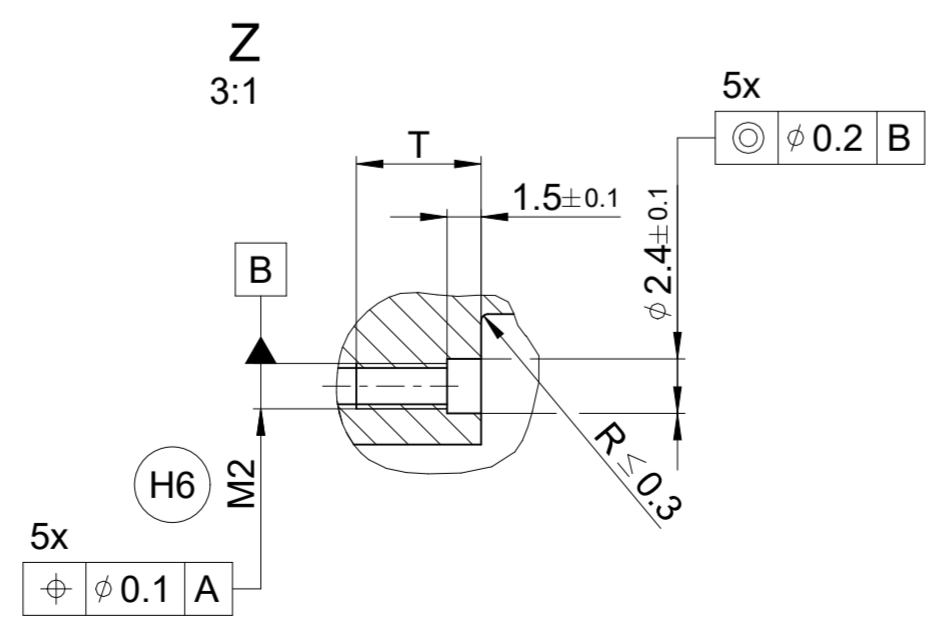
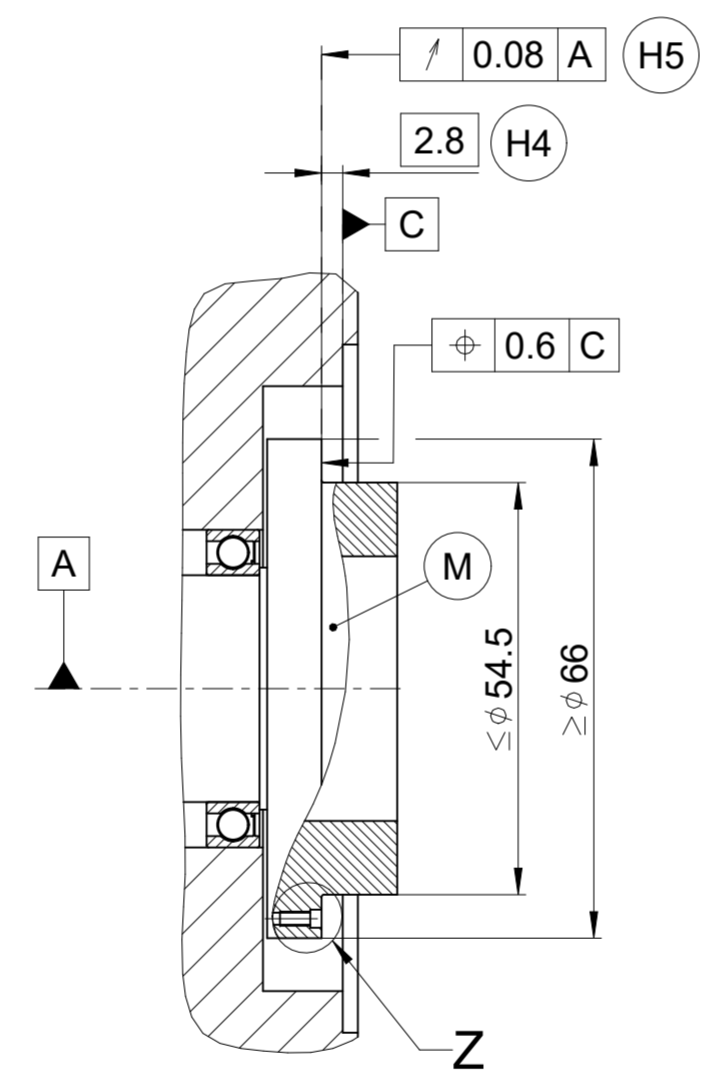
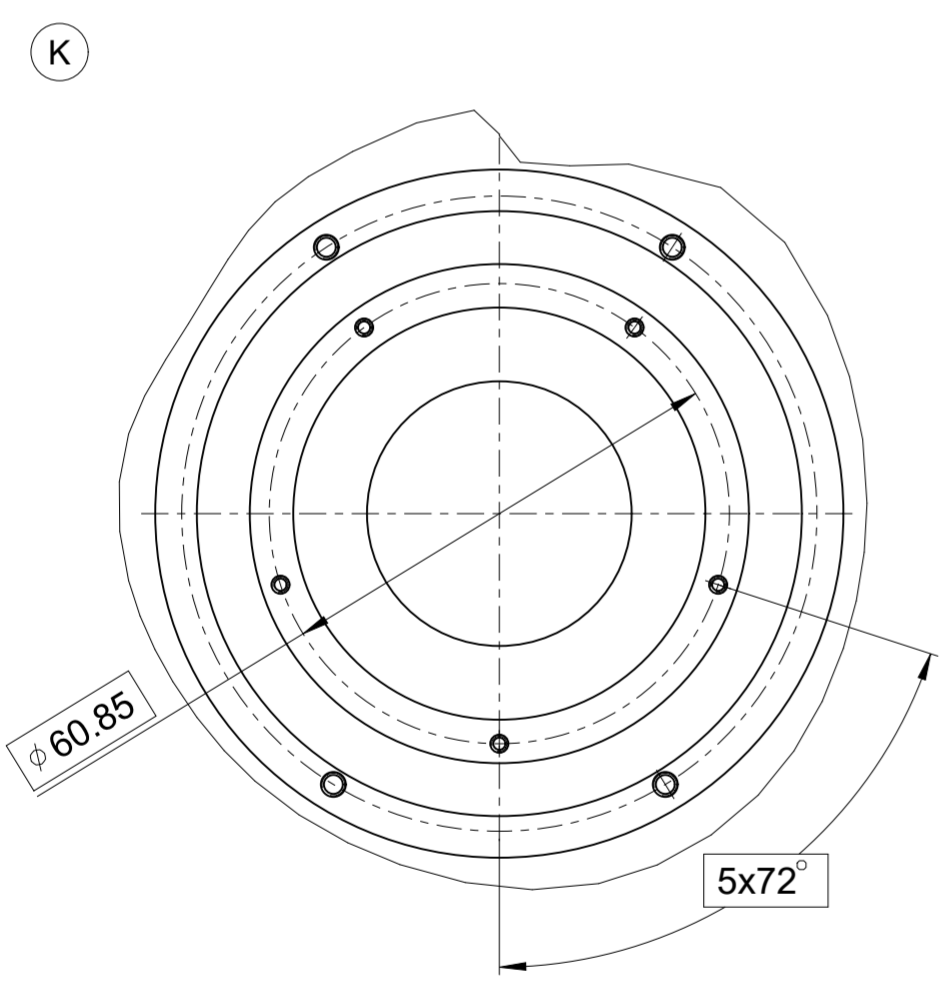
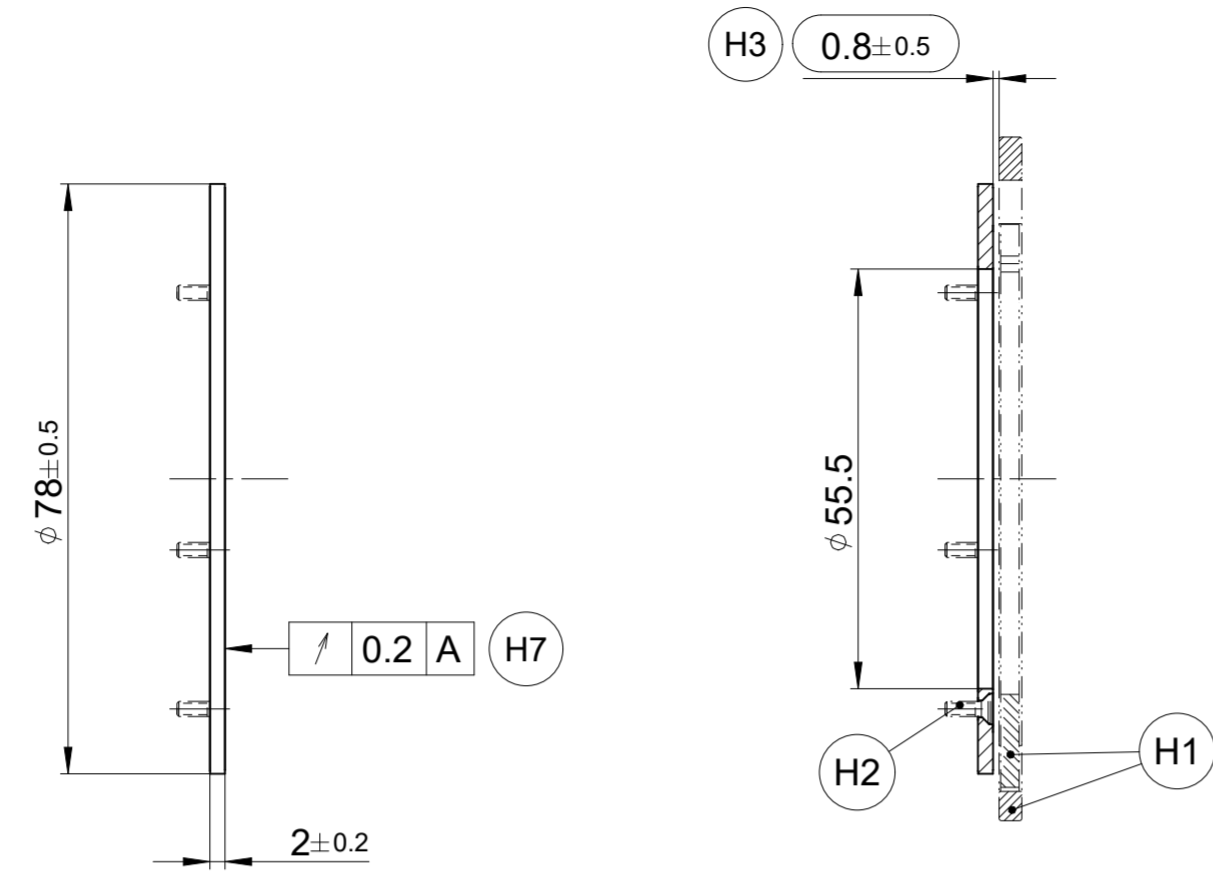
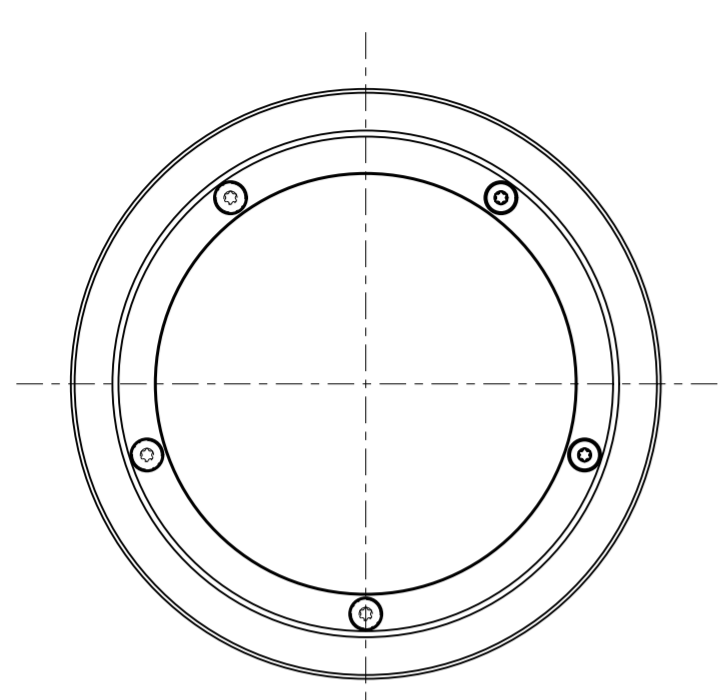


Für Funktionale Sicherheit und Mechanischen Fehlerrückmeldung obligatorisch
Mandatory for functional safety and mechanical fault exclusion

Materialvorgaben nach den allgemeinen mechanischen Hinweisen
im aktuellen Drehgeberprospekt (D349529)
Material specification according to general mechanical information
in current Rotary Encoders brochure (D349529)

| | | |
|----------------------|---|---|
| | Kundenwelle Customer shaft | Kundenstator Mating stator |
| Material Material | Stahl Steel oder / or Aluminium Aluminium | Aluminium Aluminium oder / or Stahl Steel |

| | | | | |
|-------------------------------|-------|---|-------------------------|-----------------------------------|
| Kundenwelle Customer shaft | T | (H2) Schraube Screw (H6) | Schraube-ID Screw-ID | Anzugsmoment Tightening torque |
| Stahl Steel | ≥ 5.5 | DIN EN ISO 14581 - M2 x 6 - A2 - 070 | 576131-42 | 0.25 Nm |
| Aluminium Aluminium | ≥ 7.5 | DIN EN ISO 14581 - M2 x 8 - A2 - 070 | 576131-50 | ±0.015Nm |



- A = Lagerung Kundenwelle
Bearing for customer shaft
- K = Kundenseitige Anschlussmaße
Required mating dimensions
- M = Messpunkt Arbeitstemperatur
Operating temperature measuring point
- H1 = AE, separat, verschiedene Ausführungen möglich, Anbau siehe jeweilige AMZ
AE, separately, various designs possible, mounting see respective mating dimensions
- H2 = Senkschraube M2 (5x, s. Tabelle), Schraubenkopfüberstand unzulässig
Countersunk screw M2 (5x, s. table), screw head protrusion not allowed
- H3 = Max. zulässige Abweichung zwischen Teilkreisoberfläche und Flanschauflage AE; Ausgleich von Montagtoleranzen und thermischer Ausdehnung. Dynamische Bewegung im gesamten Bereich zulässig (Bei Verwendung der ATS-Software zur Anbau-Überprüfung abweichender Anzeigewert von 1 mm für Anbaumaß)
Maximum permissible deviation between circular scale surface and mounting surface AE; Compensation of mounting tolerances and thermal expansion. Dynamic motion permitted over entire range (if the ATS software is used for mounting inspection, the display value for the counting clearance is shown as 1 mm)
- H4 = Abstand Flanschauflage AE - Teilkreisauflage
Distance of mounting surface AE - Circular scale surface
- H5 = Auflage Teilkreis
Circular scale surface
- H6 = Geeignete stoffschlüssige Losdrehicherung verwenden (min. mittelfest)
Use suitable materially bonding anti-rotation lock (min. medium strength)
- H7 = Auf der Feinspur ($\phi 68$ mm bis $\phi 77$ mm), nach dem Anschrauben
On the fine track ($\phi 68$ mm to $\phi 77$ mm), after screw on

| | | | | |
|---|--------|-----------------------------------|----------|-----------------------|
| Original drawing | | Kxl 1xx HW55 - TK | | ID number: |
| Scale | Format | Kxl 1xx HW55 - TK | | Change No. C154575-33 |
| 1:1 | A2 | Anschlussmaße / Mating Dimensions | | Phase: Serie |
| Tolerances as per ISO 8015 | | | | |
| General Tolerances ISO 2768:1989-mH ± 0.2 | | | | |
| The reproduction, distribution and utilization of this document as well as the communication of its contents to others without express authorization is prohibited. Offenders will be held liable for the payment of damages. All rights reserved in the event of the grant of a patent, utility model or design. (ISO 16016) | | | | |
| Released | | Version | Revision | Sheet |
| 03.05.2024 | | | | 1 of 1 |
| HEIDENHAIN | | D1412525-01 - A-01 | | Page |
| DR. JOHANNES HEIDENHAIN GmbH | | Document number | | |
| 83301 Traunreut, Germany | | | | |