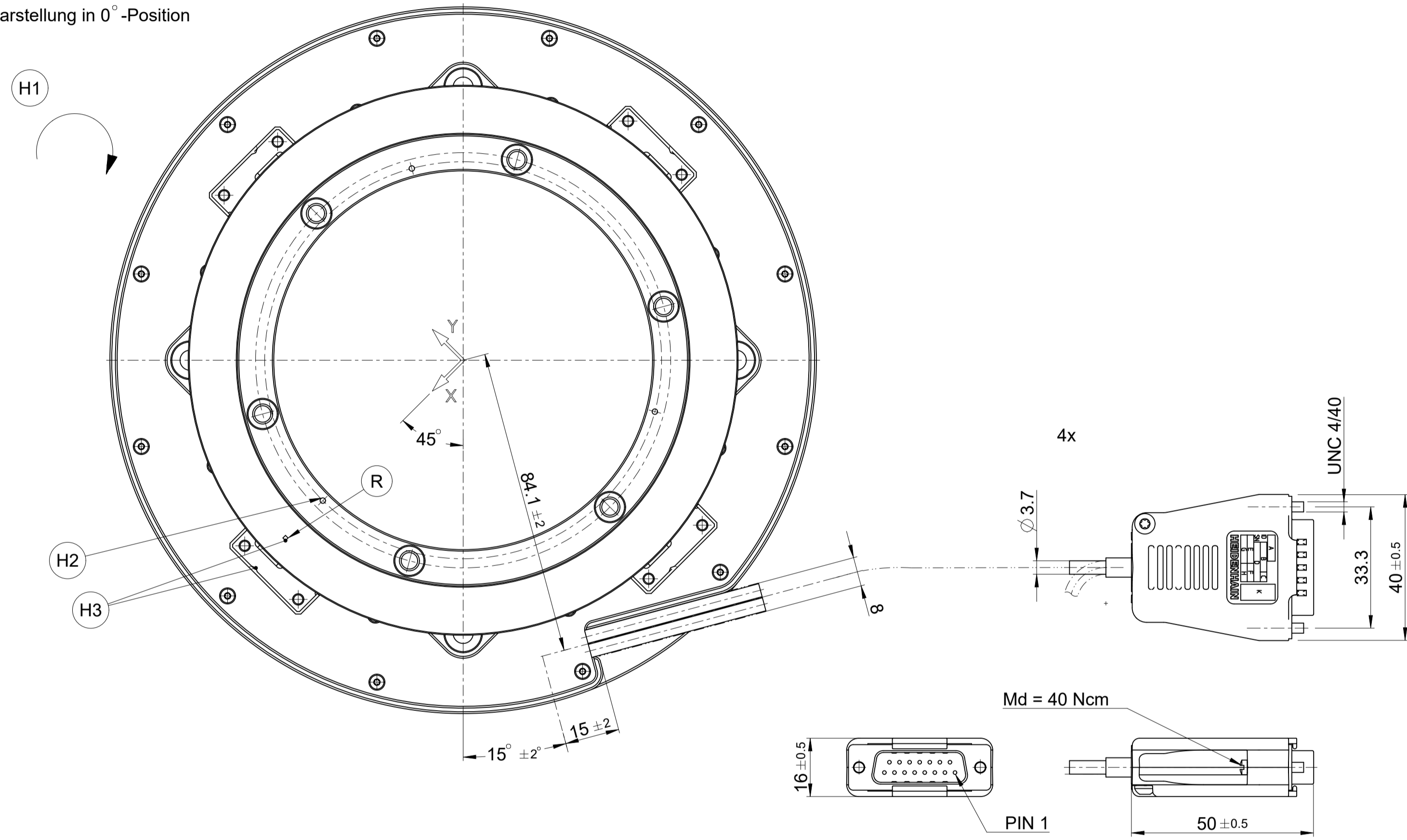


Darstellung in 0°-Position



A = Lagerung Kundenwelle

R = Referenzmarke

K1 = Kundenseitige Anschlussmaße  
K2 = Kundenseitige Anschlussmaße mit Zentrierbünden

- H1 = Drehrichtung der Welle für steigende Positionswerte
- H2 = Markierungen zur Teilkreiszentrierung (3 x 120°)
- H3 = Markierung der 0°-Position
- H4 = Zentrierbund Teilkreisnabe
- H5 = Zentrierbund Abtasteinheit
- H6 = Schraube: ISO 4762 - M5x16 - 8.8  
Anziedrehmoment: 500 ± 30 Ncm  
Stoffschlüssige Schraubenlosdrehicherung erforderlich
- H7 = Schraube: ISO 4762 - M4x12 - 8.8  
Anziedrehmoment: 220 ± 13 Ncm  
Stoffschlüssige Schraubenlosdrehicherung erforderlich
- H8 = Kundenanbauteile  
Material: Stahl  
Zugfestigkeit: Rm > 600 N/mm<sup>2</sup>  
Streckgrenze: Re > 400 N/mm<sup>2</sup>  
Scherfestigkeit: Tau > 390 N/mm<sup>2</sup>  
Elastizitätsmodul: 20° C: E > 200000...215000 N/mm<sup>2</sup>  
Wärmeausdehnungskoeffizient: 20° C: (10 <math>\alpha</math> <math><13)</math> x 10<sup>-6</sup> 1/K
- H9 = Montagefläche sauber und fettfrei
- H10 = Nabe 45° verdreht dargestellt

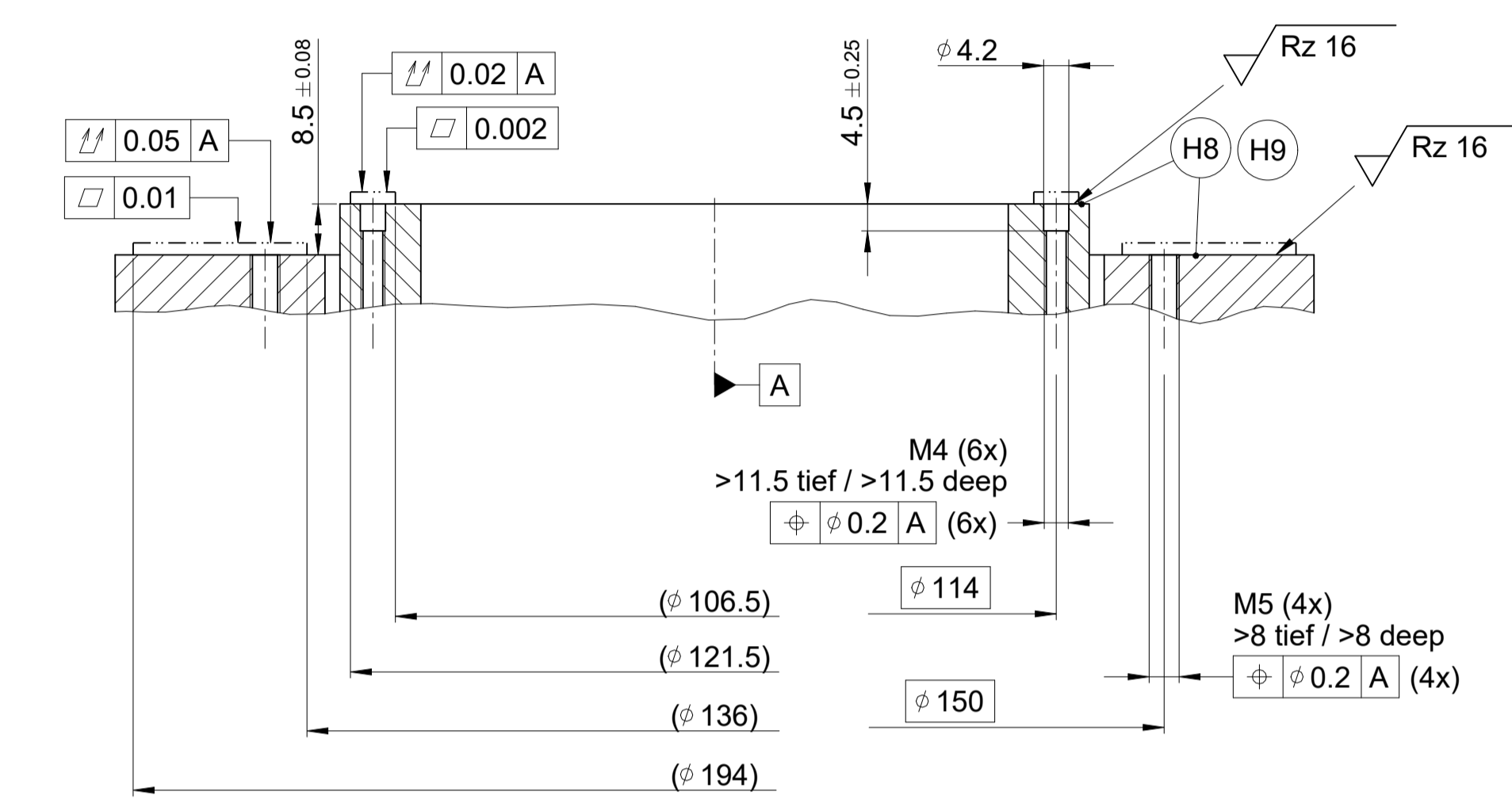
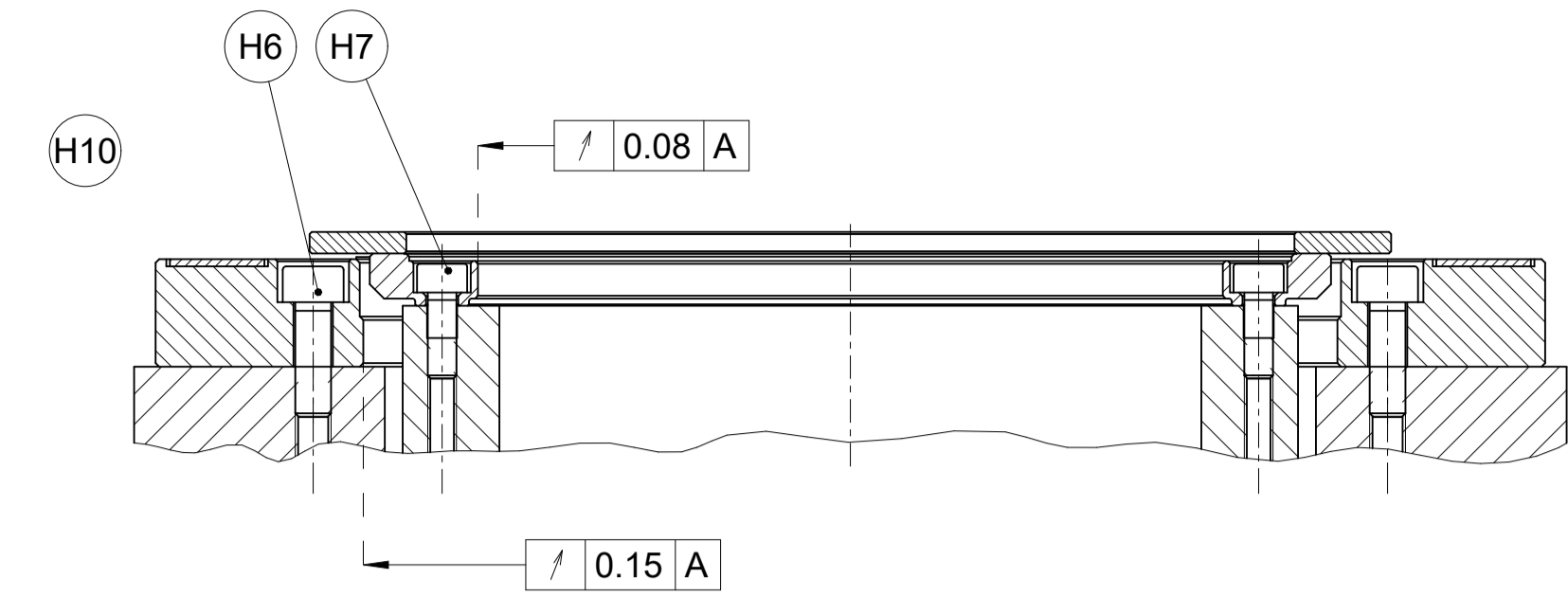
A = Bearing of mating shaft

R = Reference mark

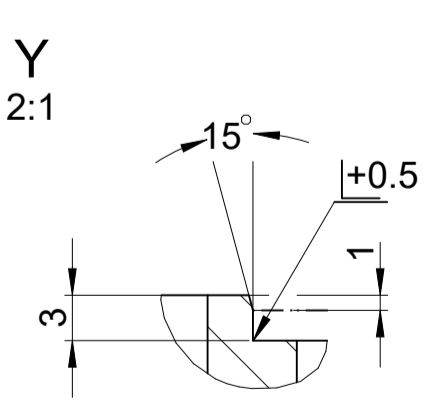
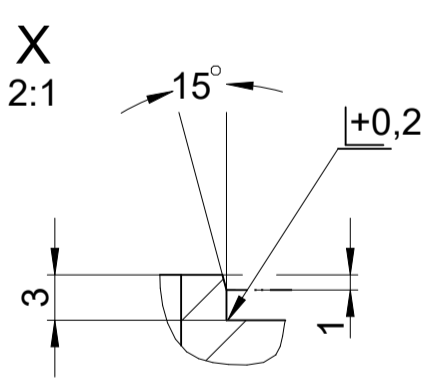
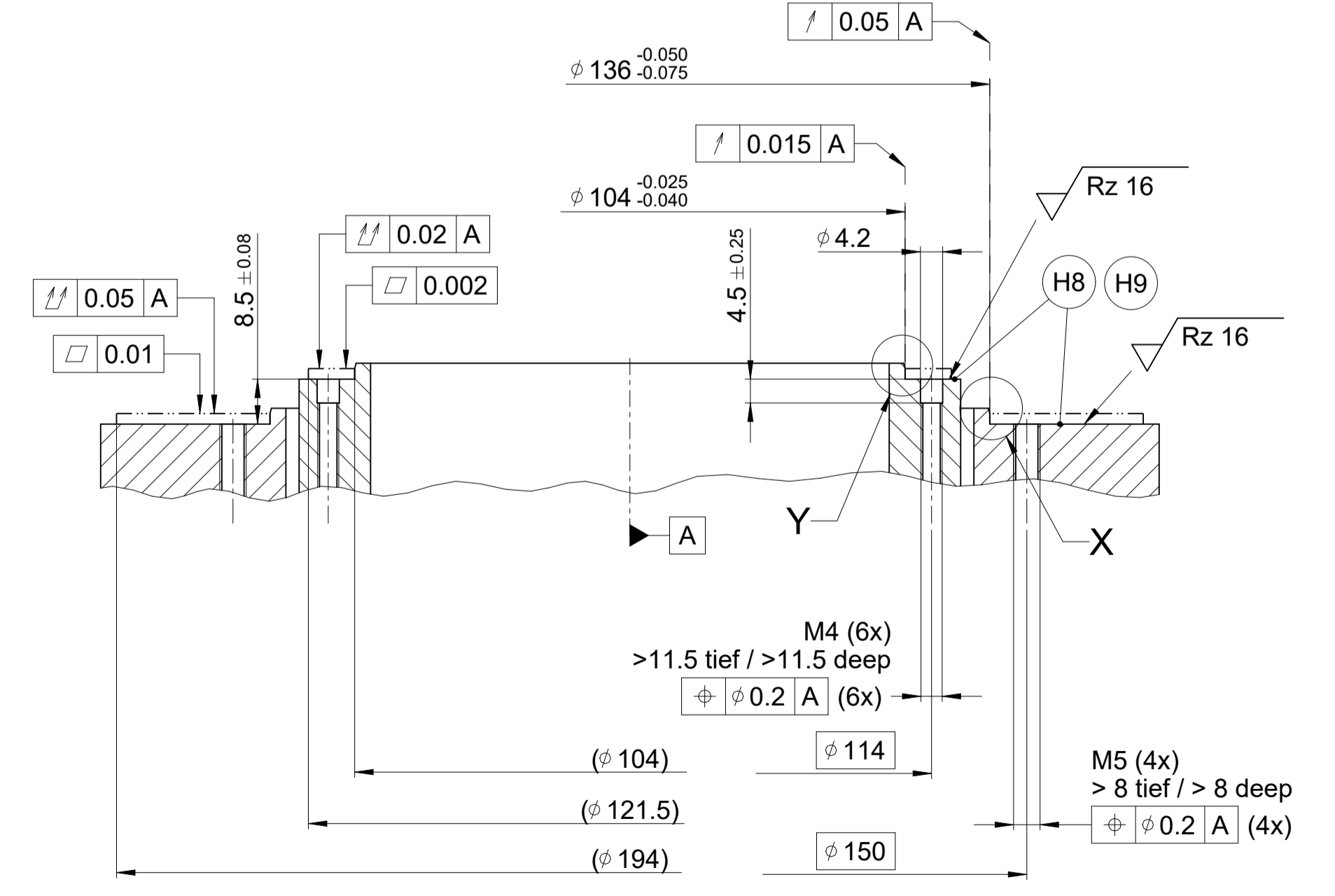
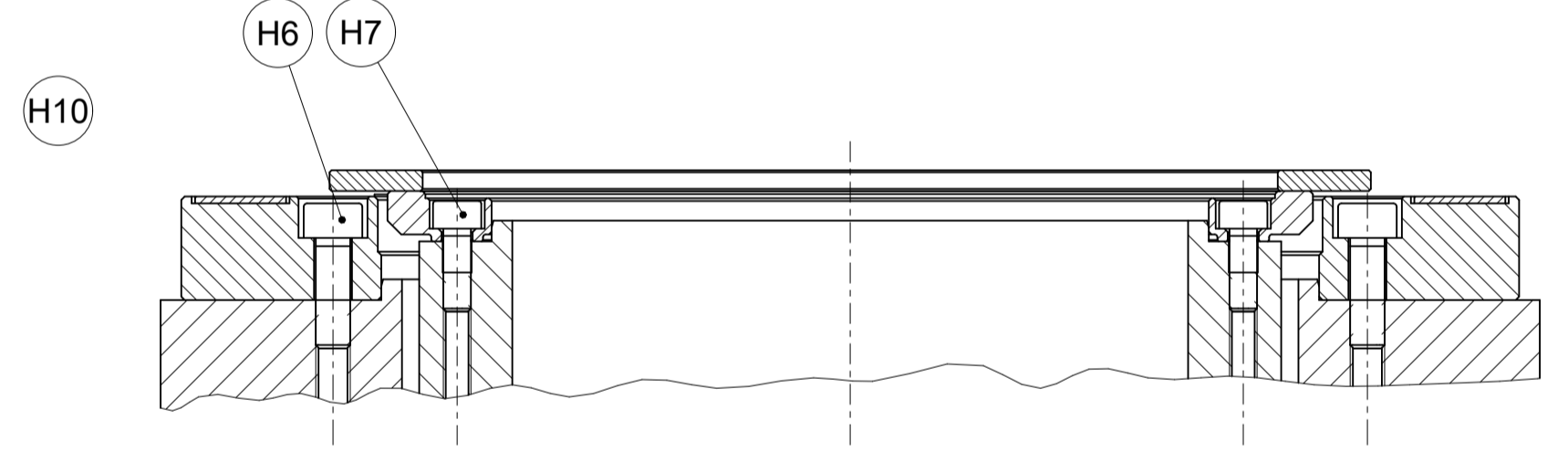
K1 = Required mating dimensions  
K2 = Required mating dimensions with centering collars

- H1 = Direktion of shaft rotating for rising output signals
- H2 = Marks for centering the circular scale (3 x 120°)
- H3 = 0° position
- H4 = Centering collar disk/hub
- H5 = Centering collar scanning unit
- H6 = Schraube: ISO 4762 - M5x16 - 8.8  
Tightening torque: 500 ± 30 Ncm  
Materially bonding anti-rotation lock necessary
- H7 = Schraube: ISO 4762 - M4x12 - 8.8  
Tightening torque: 220 ± 13 Ncm  
Materially bonding anti-rotation lock necessary
- H8 = Kundenanbauteile  
Material: steel  
Tensile strength: Rm > 600 N/mm<sup>2</sup>  
yield strength: Re > 400 N/mm<sup>2</sup>  
Shearing strength: Tau > 390 N/mm<sup>2</sup>  
Young's modulus: 20° C: E > 200000...215000 N/mm<sup>2</sup>  
coefficient of thermal expansion: 20° C: (10 <math>\alpha</math> <math><13)</math> x 10<sup>-6</sup> 1/K
- H9 = Mounting surfaces clean and free of grease
- H10 = Hub shown at 45°

K1 Kundenseitige Anschlussmaße  
Required mating dimensions



K2 Kundenseitige Anschlussmaße mit Zentrierbünden  
Required mating dimensions with centering collars



Original drawing		ERP1080 Dplus		ID number:
Scale	Format	ERP1080 Dplus		Change No. C143468-75
Dimensions in mm	1:1 A1	Anschlussmaße / Mating Dimensions		Series
The reproduction, distribution and utilization of this document as well as the communication of its contents to others without express authorization is prohibited. Offenders will be held liable for the payment of damages. All rights reserved in the event of the grant of a patent, utility model or design. (ISO 18015)				Tolerances as per ISO 8015
HEIDENHAIN				General Tolerances ISO 2768-1S09-mH ±0.2
DR. JOHANNES HEIDENHAIN GmbH				Released
83301 Traunreut, Germany				09.04.2024
Version   Revision   Sheet   Page				D1410142-01 - A-01 1 of 1
				Document number