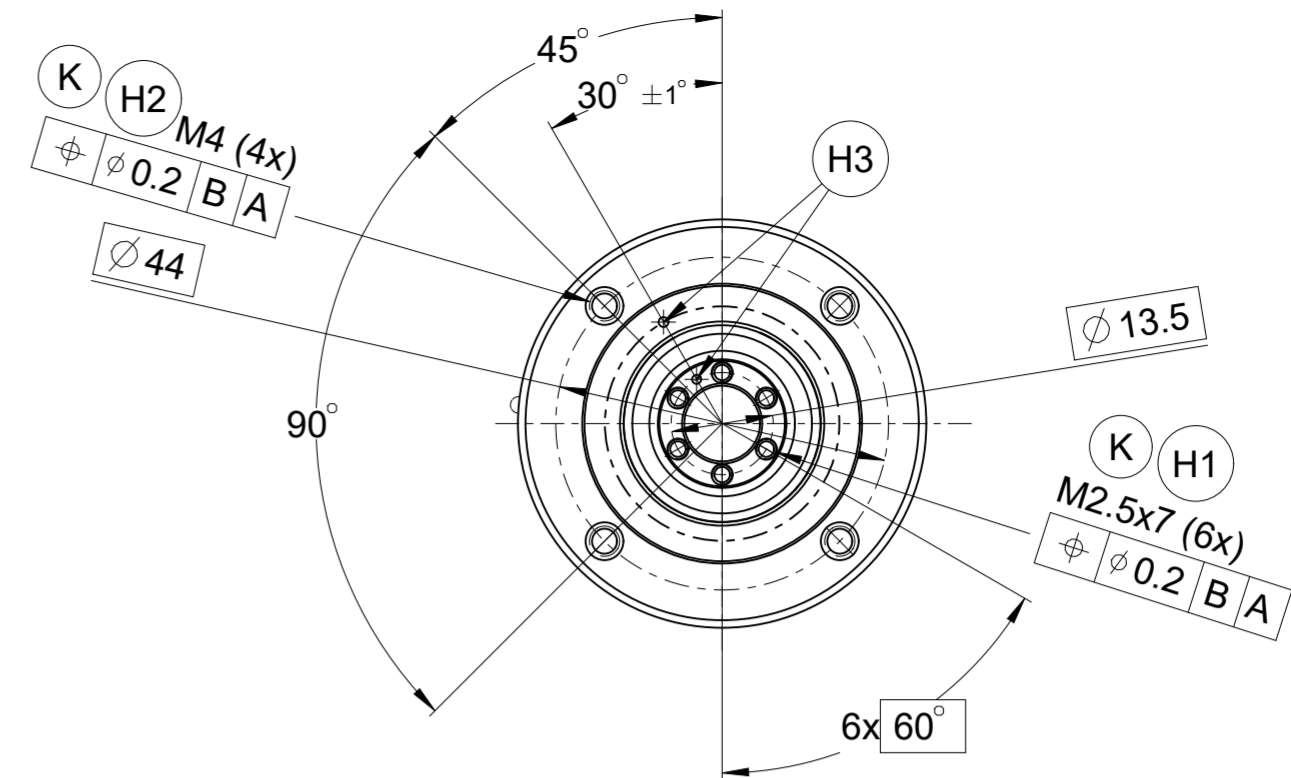
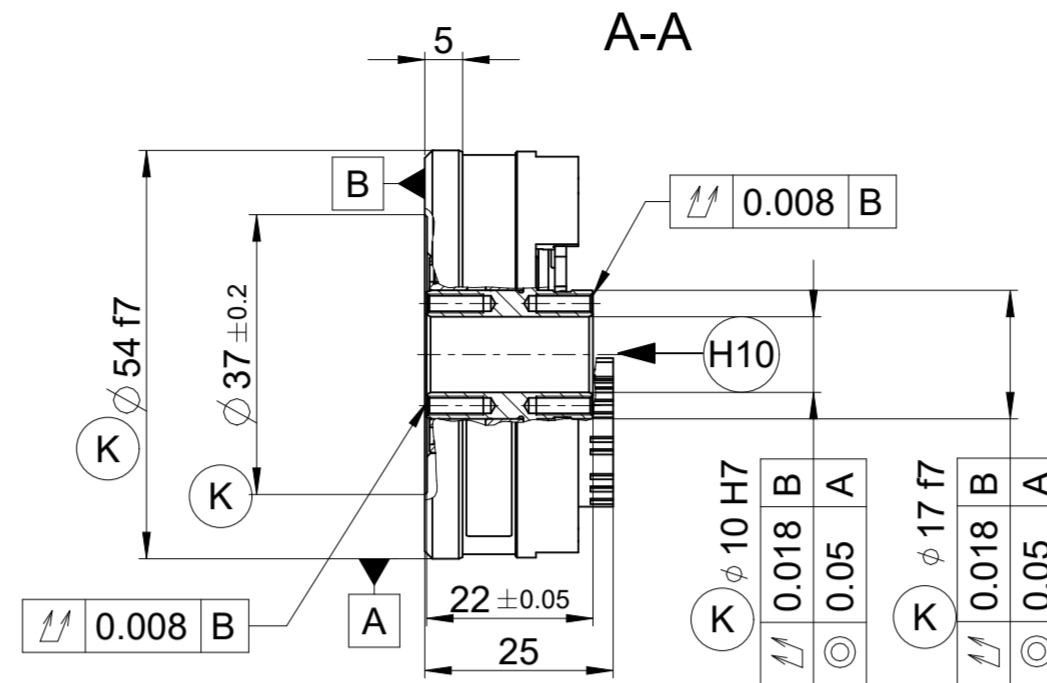
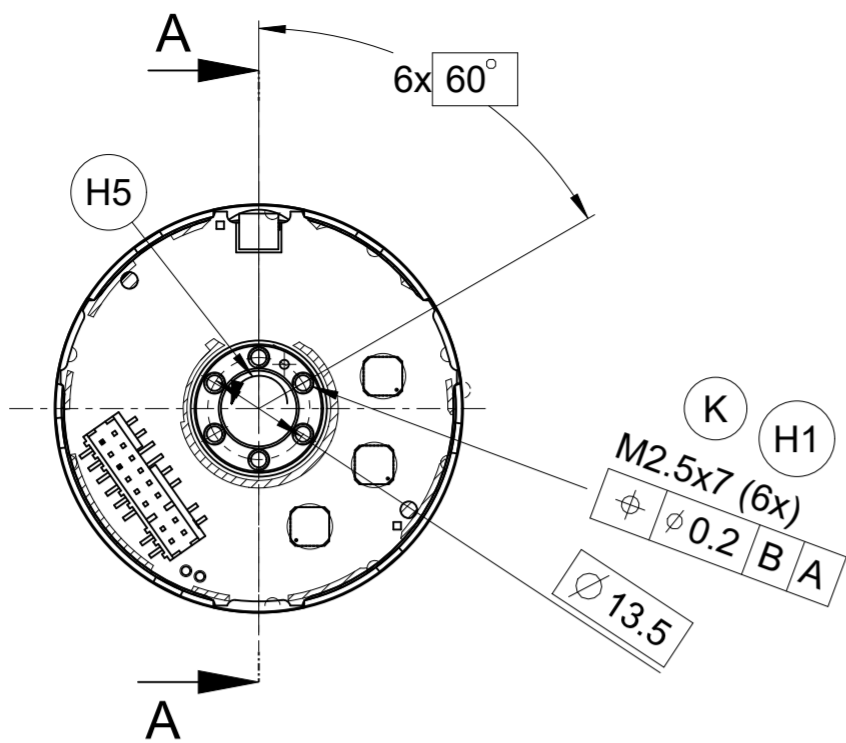
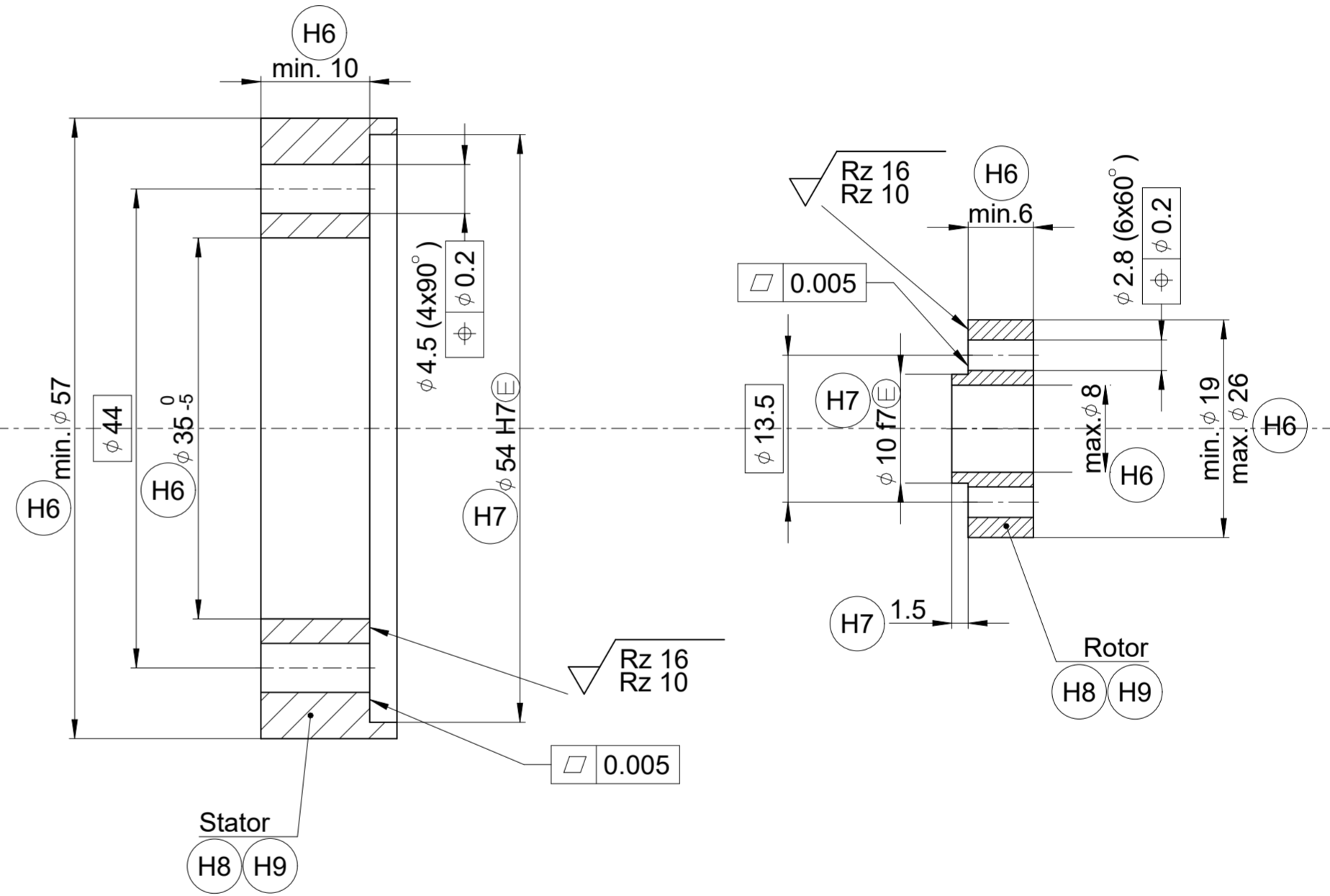
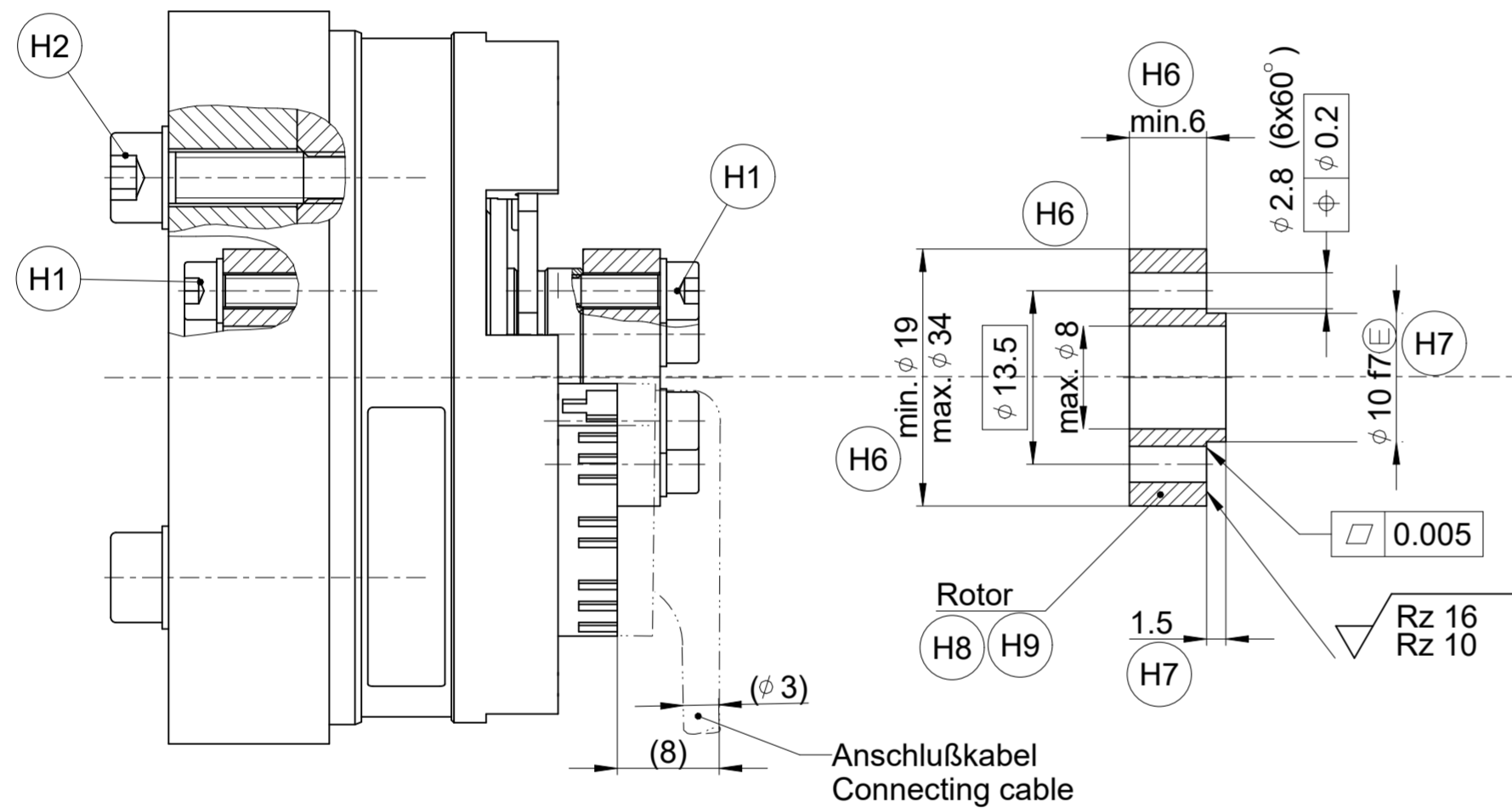


Passmaß BASIC SIZE	Abmaße DEVIATIONS
φ 10 H7	+0.015 0.000
φ 10 f7	-0.013 -0.028
φ 17 f7	-0.016 -0.034
φ 54 H7	+0.030 0.000
φ 54 f7	-0.030 -0.060

Außenring nicht als Rotor benutzen!
Don't use outer ring as rotor part!



K Kundenseitige Anschlussmaße Maßstab 2:1
Required mating dimensions Scale 2:1



Montageflächen und Gewinde müssen sauber und fettfrei sein!
Mounting surfaces and threads must be clean and free of grease!

- | | |
|---|---|
| <p>(K) = Kundenseitige Anschlussmaße</p> <p>(H1) = Anzugsmomente der Zylinderschrauben M2.5: 0.6 ± 0.03 Nm
Schraube: ISO 4762
Schraubenfestigkeitsklasse 8.8
Scheibe: ISO 7092-2.5-200HV
Stoffschlüssige Schraubenlosdrehicherung erforderlich</p> <p>(H2) = Anzugsmomente der Zylinderschrauben M4: 2.5 ± 0.13 Nm
Schraube: ISO 4762
Schraubenfestigkeitsklasse 8.8
Scheibe: ISO 7092-4-200HV
Stoffschlüssige Schraubenlosdrehicherung erforderlich</p> <p>(H3) = Markierung der 0°-Position ± 5°</p> <p>(H4) = Kunde ist für elektrische Abschirmung sowie Verbindungskabel verantwortlich</p> <p>(H5) = Drehrichtung der Welle für steigende Positionswerte</p> <p>(H6) = erforderliche Kunden-Anbaumaße zur Übertragung der maximal zulässigen Belastungen gemäß den Technischen Daten</p> <p>(H7) = optional empfohlene Kunden-Anbaumaße</p> <p>(H8) = Material für Kunden-Anbauteile: Stahl
Re >= 235 N/mm² Rm >= 400 N/mm²</p> <p>(H9) = Thermischer Ausdehnungskoeffizient:
(10 < alpha < 16) x 10⁻⁶/K</p> <p>(H10) = Vorgeschriebene Richtung für Axialkräfte</p> | <p>Required mating dimensions</p> <p>Tightening torque of the cylinder head screws M2.5: 0.6 ± 0.03 Nm
Screw: ISO 4762
Screw property class 8.8
Washer: ISO 7092-2.5-200HV
Materially bonding anti-rotation lock necessary</p> <p>Tightening torque of the cylinder head screws M4: 2.5 ± 0.13 Nm
Screw: ISO 4762
Screw property class 8.8
Washer: ISO 7092-4-200HV
Materially bonding anti-rotation lock necessary</p> <p>Marking of the 0° position ± 5°</p> <p>Customer is responsible for electrical shielding and support of connecting cable</p> <p>Direction of rotation for ascending position values</p> <p>Required mounting dimensions for the transfer of the maximum permissible loads as per the specifications</p> <p>Optional recommended mating dimensions</p> <p>Material of customers attachments: steel
Re >= 235 N/mm² Rm >= 400 N/mm²</p> <p>Coefficient of thermal expansion
(10 < alpha < 16) x 10⁻⁶/K</p> <p>Required direction of axial forces</p> |
|---|---|

ID number: 1392058-01	
Change No. C137467-10	Phase: Serie
MRP 2030	
MRP	
Anschlussmaße / Mating Dimensions	
Tolerances as per ISO 8015	
General Tolerances ISO 2768:1989-mH ± 0.2	
The reproduction, distribution and utilization of this document as well as the communication of its contents to others without express authorization is prohibited. Offenders will be held liable for the payment of damages. All rights reserved in the event of the grant of a patent, utility model or design. (ISO 16016)	
Released 07.12.2023	Version Revision Sheet Page D1407126-00-A-01 1 of 1

HEIDENHAIN
DR. JOHANNES HEIDENHAIN GmbH
83301 Traunreut, Germany