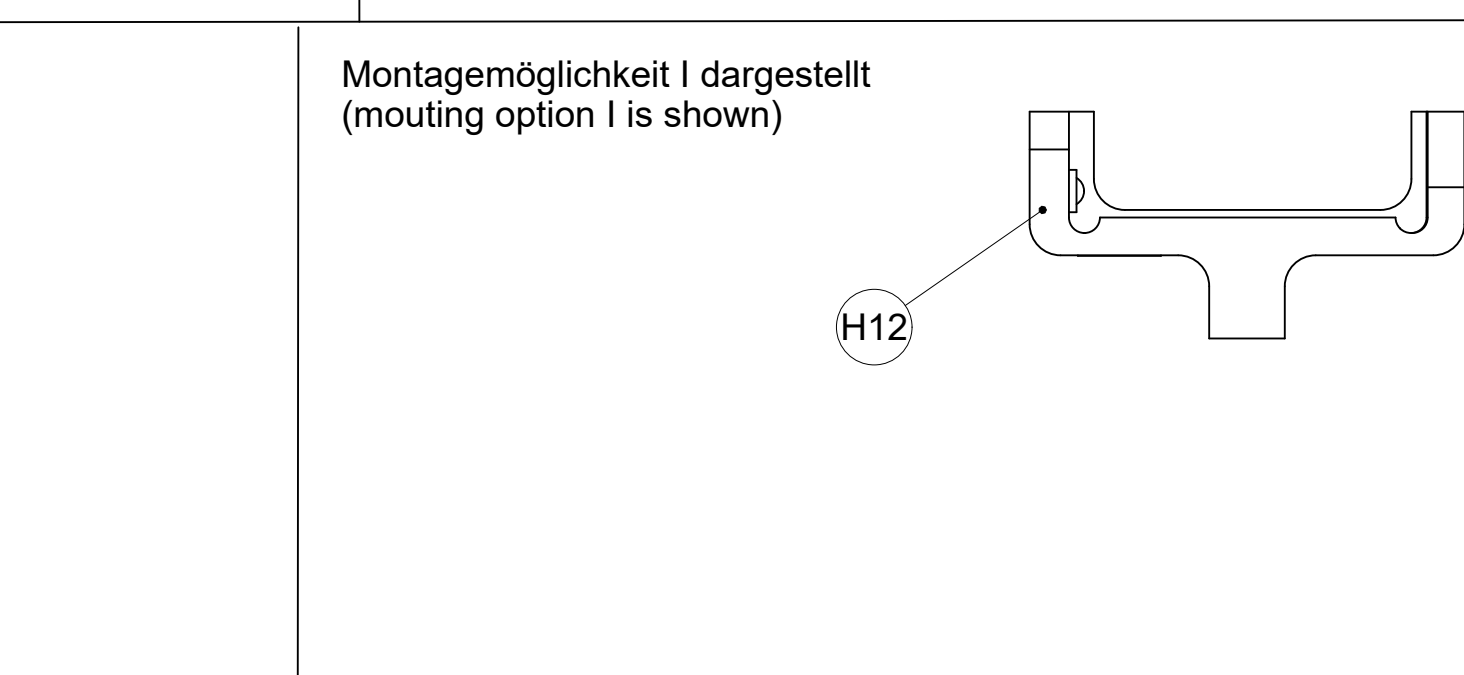
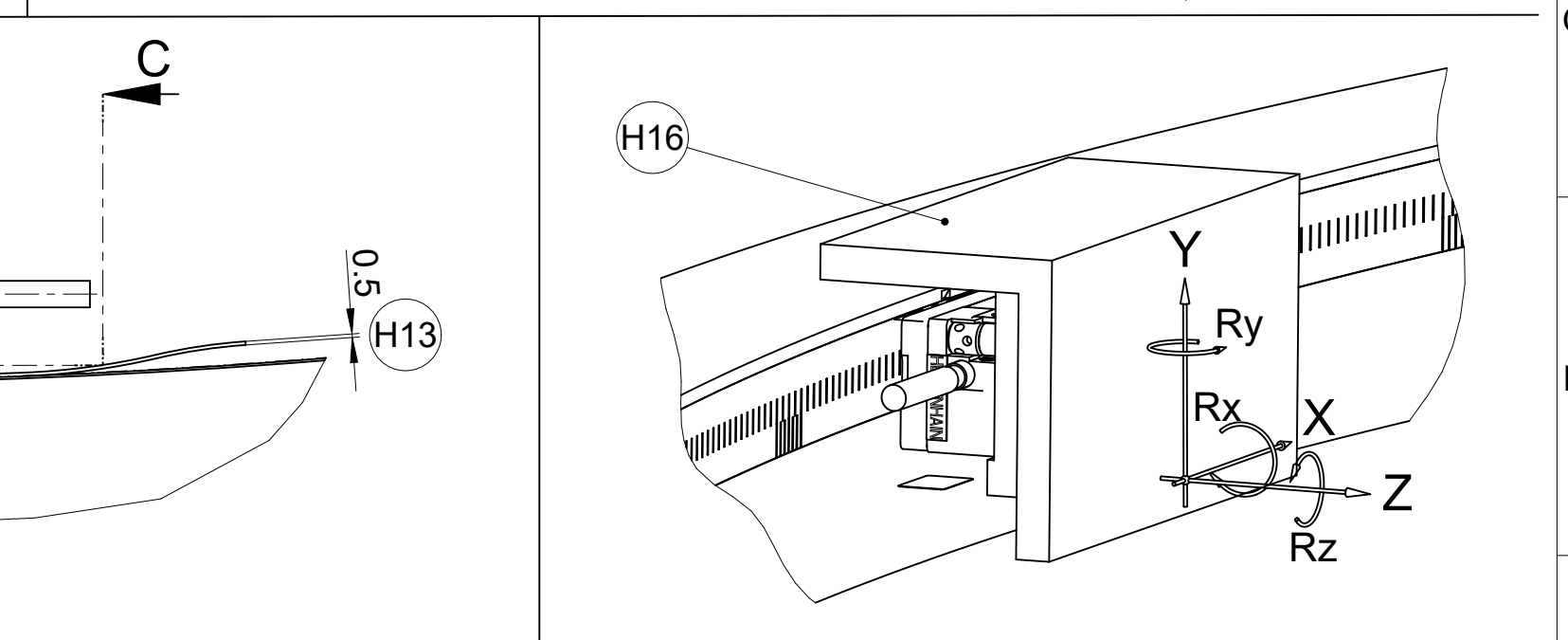
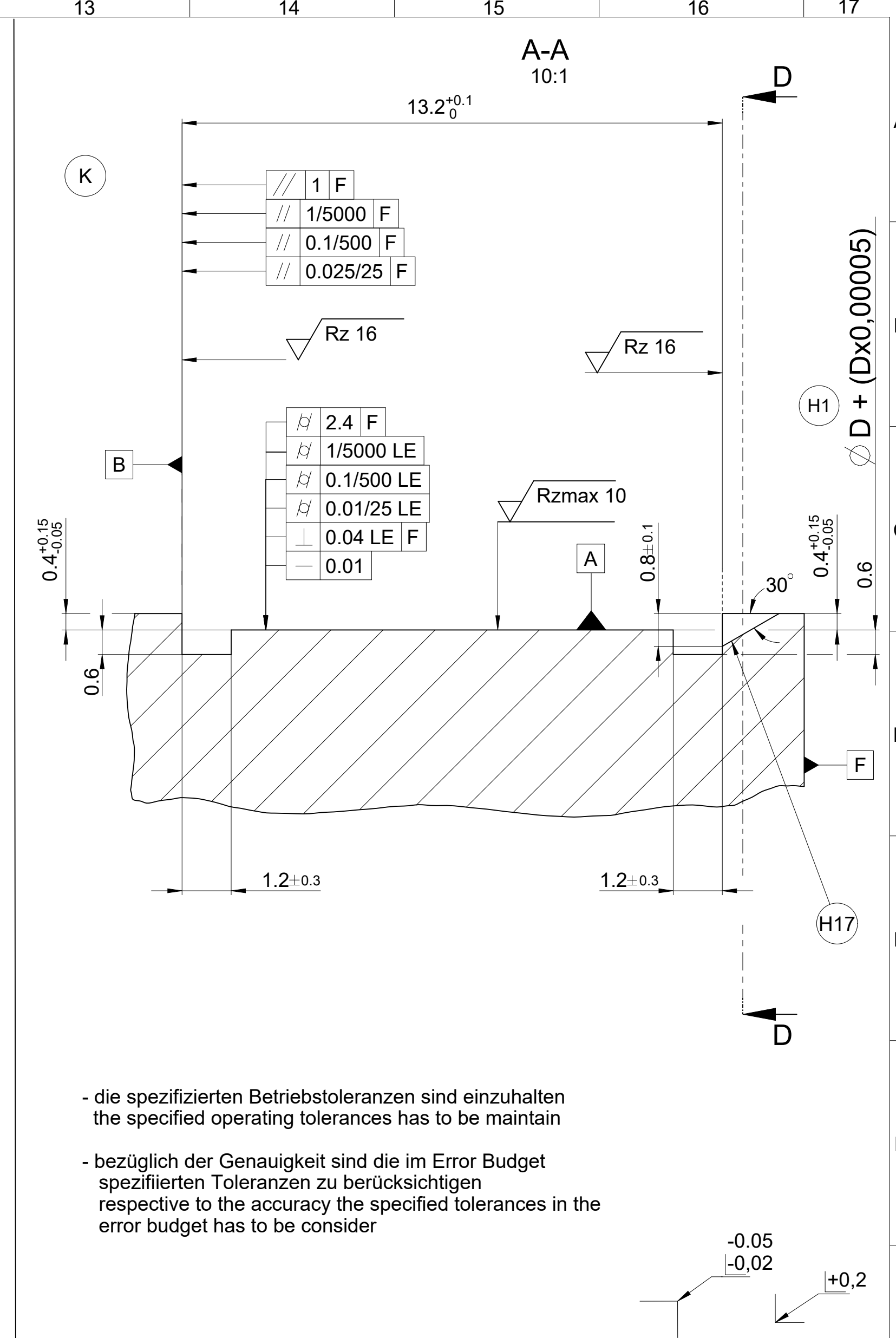
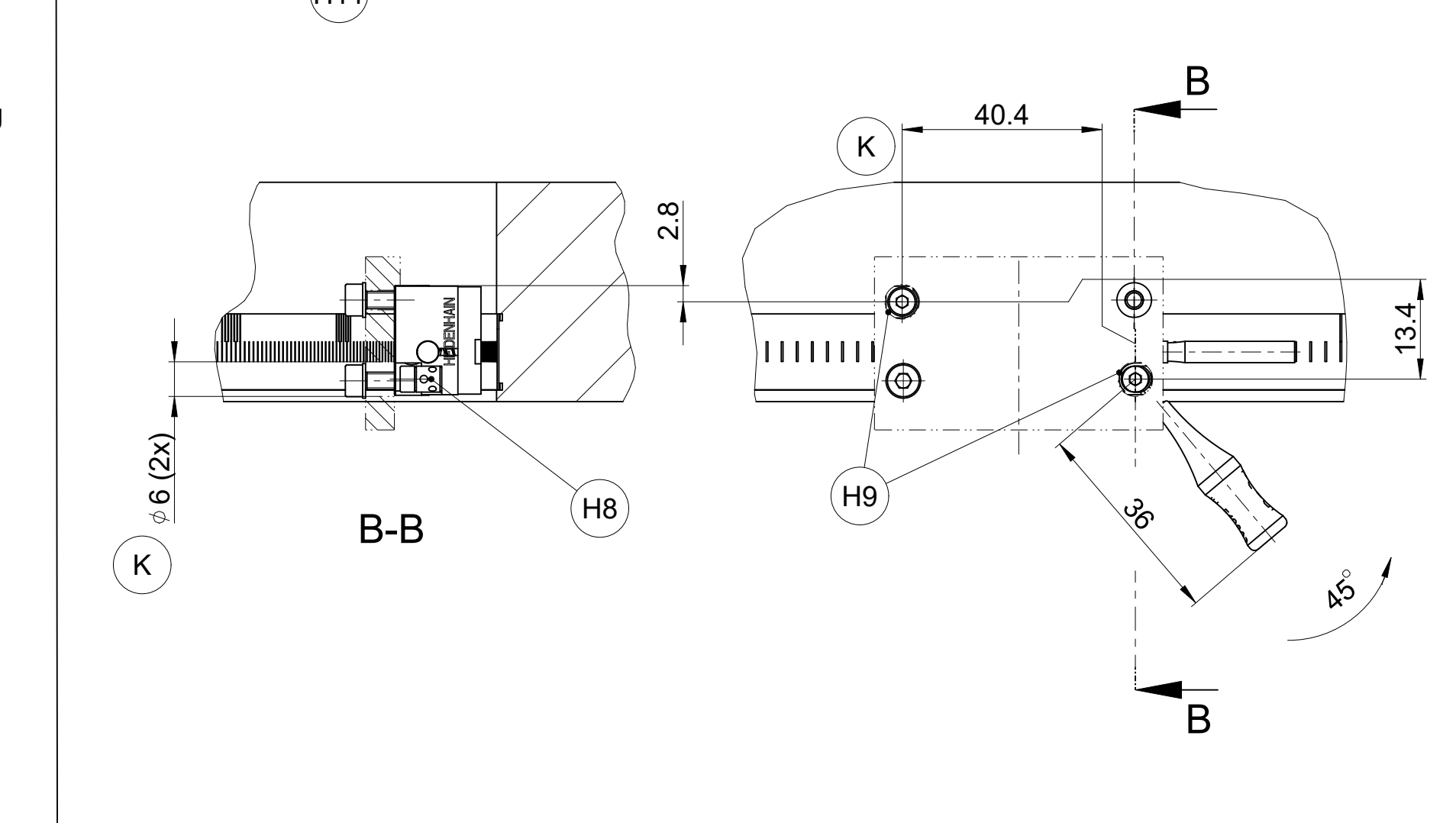
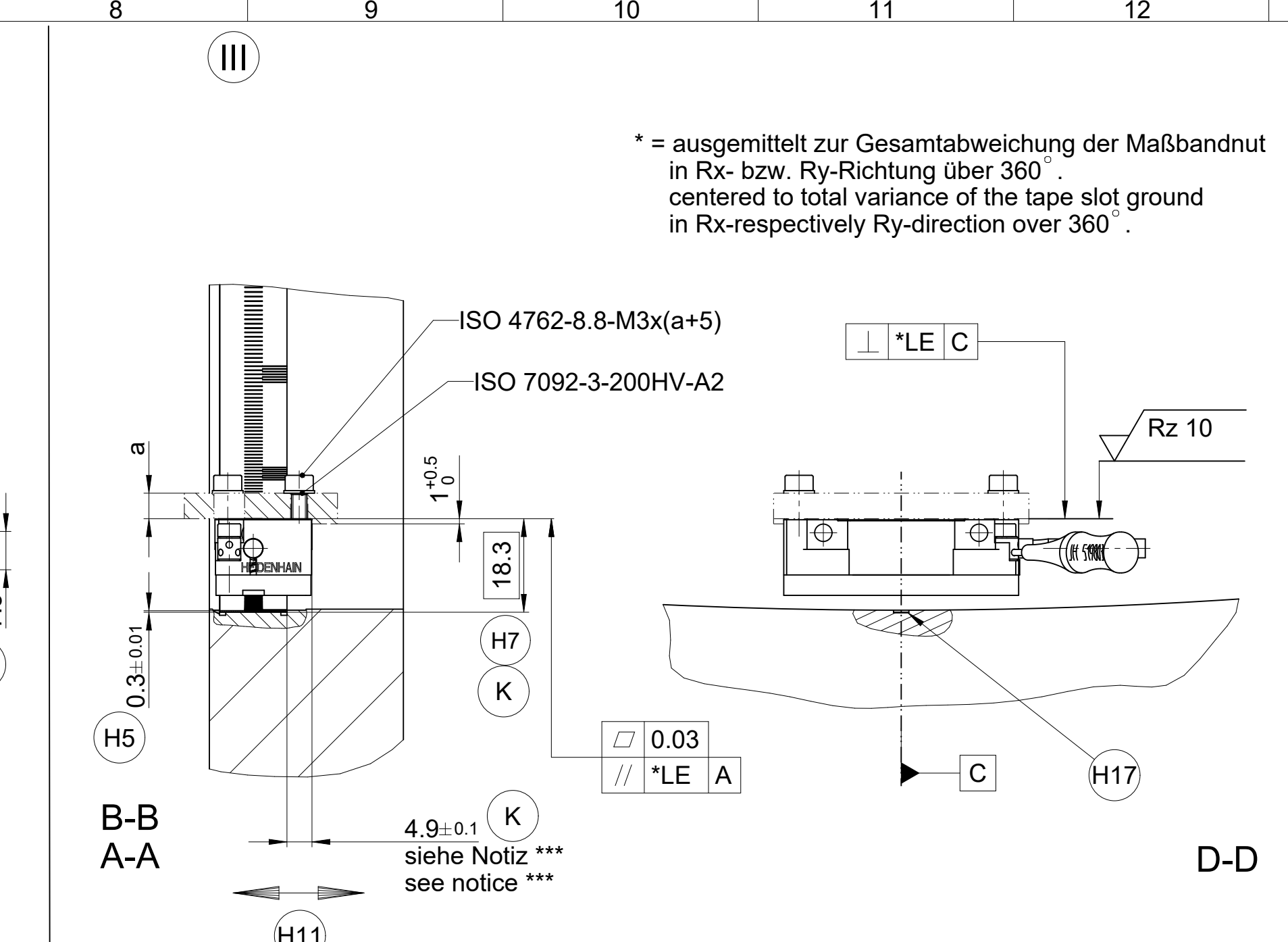
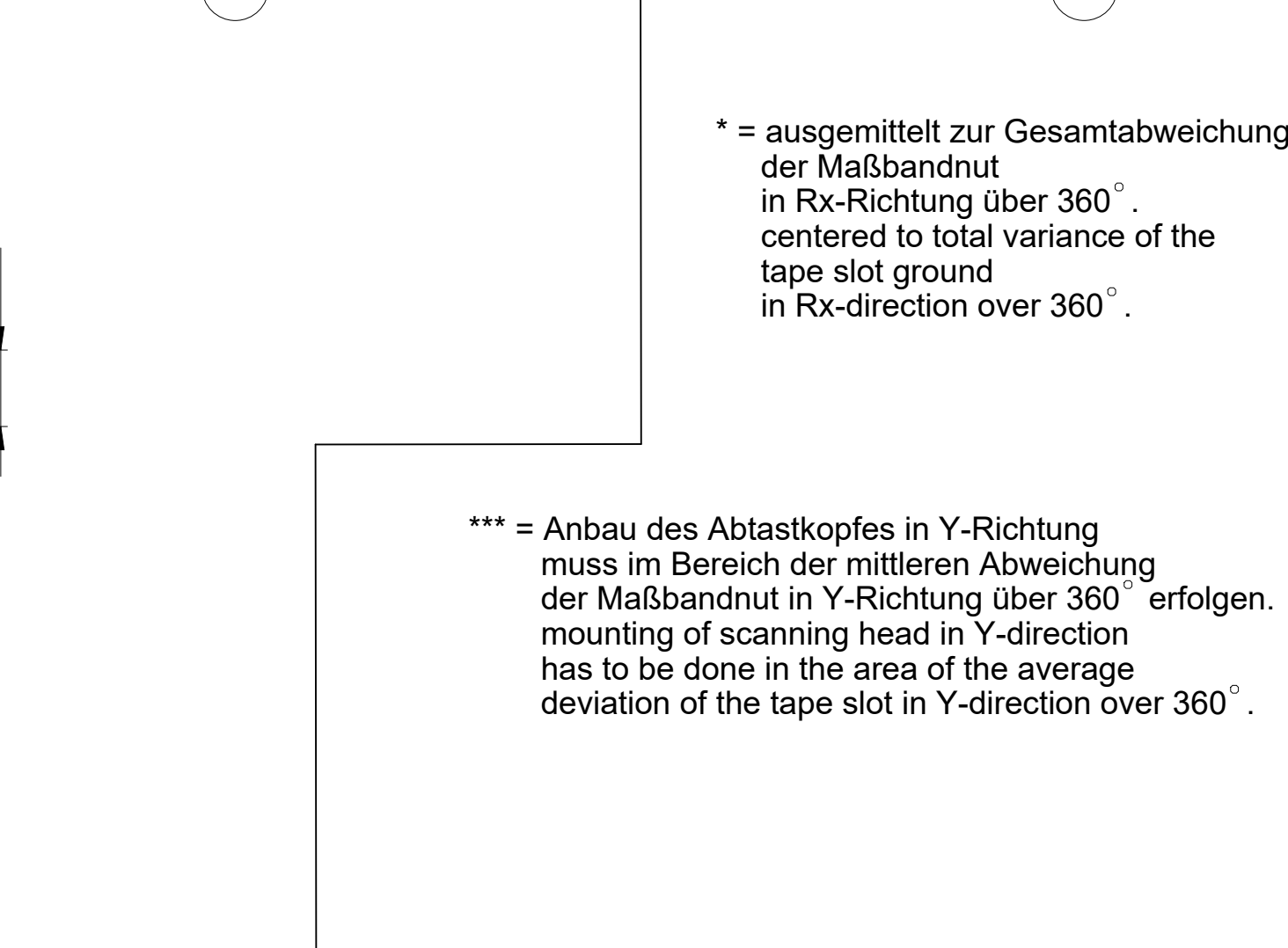
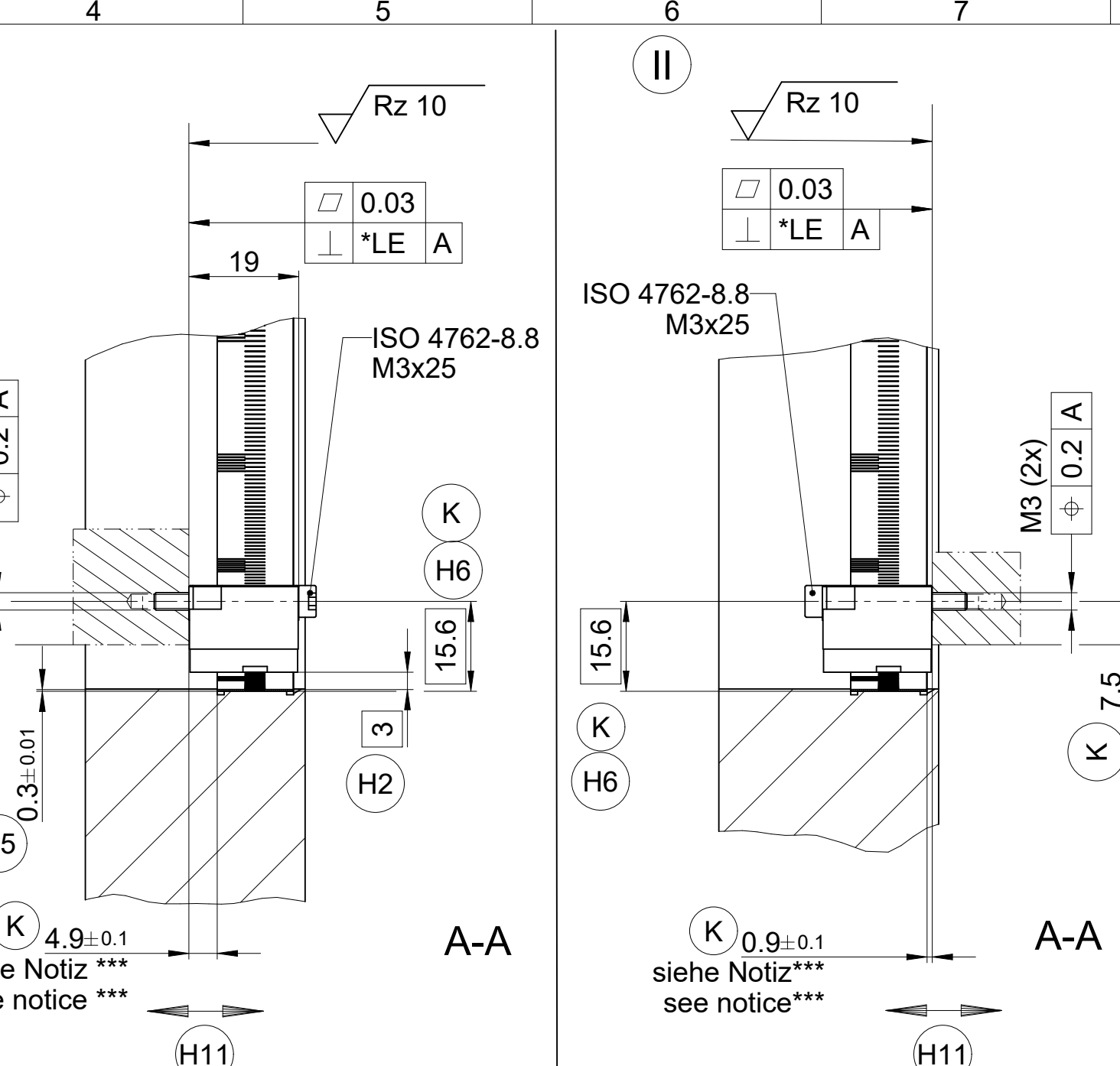
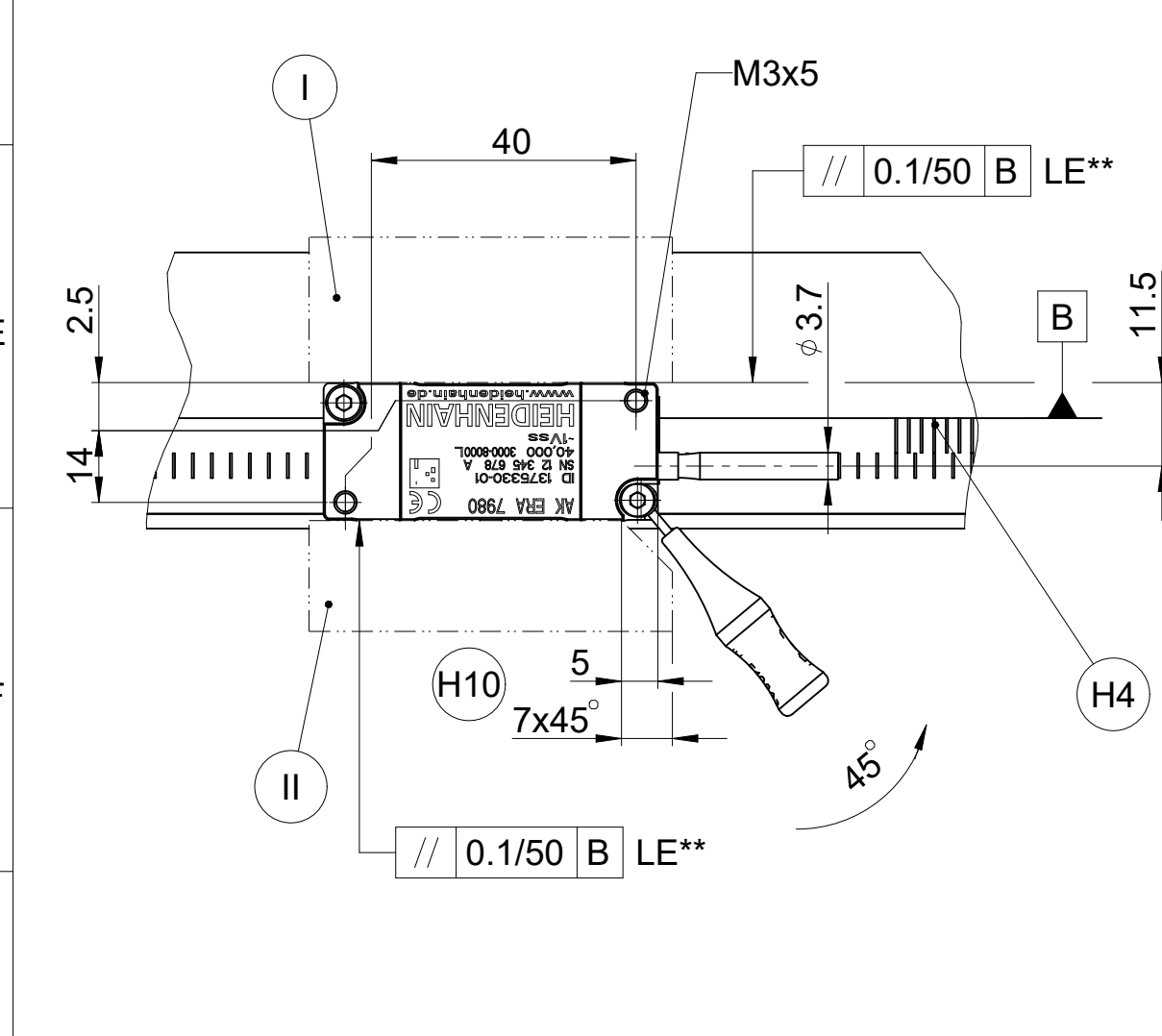
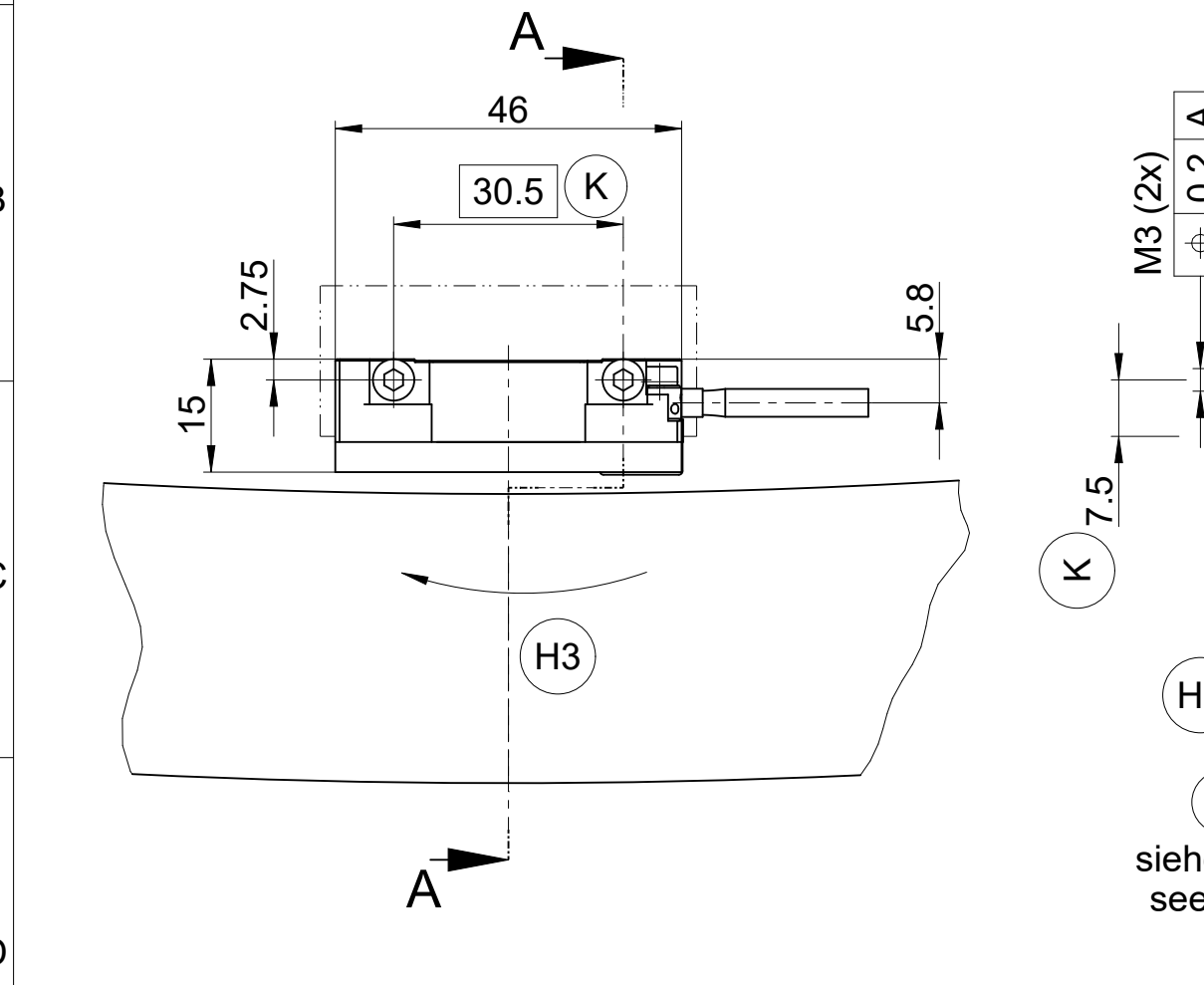


I II  
 \* = ausgemittelt zur Gesamtabweichung der Maßbandnut in Rx-Richtung über 360° centered to total variance of the tape slot ground in Rx-direction over 360°  
 \*\* = Feinjustage der Inkremental-Signale und der Referenzmarke erfolgt mit Hilfe der Exzenterbuchse H8. fine-adjustment of incremental signal and reference-pulse has to be done with the excentric nut H8.



- I II III = Montagemöglichkeiten / Mounting options
- F = reale Führungsbahn / real guide track
- K = Kundenseitige Anschlussmaße / Required mating dimensions
- H1 = Maßband Nutgrund  $\varnothing$  D / Scale tape slot floor  $\varnothing$  D
- H2 = Montageabstand / Mounting clearance
- H3 = Positive Drehrichtung / Positive direction of rotation
- H4 = Referenzmarke / Reference mark
- H5 = Maßbanddicke / Scale-tape thickness
- H6 = Abstand vom Maßband-Nutgrund bis Befestigungsgewinde / Distance from scale tape slot floor to threaded mounting hole
- H7 = Abstand von Maßband-Nutgrund bis rückseitige Montagefläche Abtastkopf / Distance from scale-tape slot floor to rear mounting surface of scanning head

- H8 = Exzenterbuchse (Moire Einstellung) / Eccentric nut (moire adjustment)
- H9 = Erforderliche Bohrung zur Feinjustierung / Hole required for fine adjustment
- H10 = Fase für Zugänglichkeit bei Moire-Einstellung (Anbaufall II) / chamfer for accessibility for moire-adjustment (mounting option II)
- H11 = Zul. Axialbewegung (Maßband relativ zum Abtastkopf)  $\leq \pm 0,5\text{mm}$  / Permissible axial movement (tape to scanning head)  $\leq \pm 0,5\text{mm}$
- H12 = Montagehilfe für Anbau bei nominalem Abtastabstand = 3mm / Assembling aid for mounting at nominal scanning gap = 3mm
- H13 = Montageabstand (Abstandsfolie) / Mounting clearance (spacer foil)
- H14 = Einbauraum für Montagehilfe / Space requirements for assembling aid
- H15 = Richtung für Demontage der Montagehilfe (bei Montagemöglichkeit I) / direction for dismounting assembling aid (for mounting option I)

- H16 = Abdeckung gegen Fremdlichteinfluss / housing against effects of light
- H17 = Kerbe für Maßband-Demontage (b=3mm) / Notch for removing scale tape (b=3mm)

Maße ohne Toleranzangabe  $\pm 0,2$   
 dimensions without tolerance  $\pm 0,2$

Original drawing		ERA 7980		ID number:	C139768-05
Scale		ERA 7980		Change No.	Serie
Format		Anschlussmaße / Mating Dimensions		Tolerances as per	ISO 8015
Dimensions in mm	1:1 A1			General Tolerances	ISO 2768-1:2008-mH $\pm 0,2$
The reproduction, distribution and utilization of this document as well as the communication of its contents to others without express authorization is prohibited. Offenders will be held liable for the payment of damages. All rights reserved in the event of the grant of a patent, utility model or design. (ISO 15071)					
Released		Version / Revision / Sheet		Page	
02.05.2023		D1378973-00 - A-01		1 of 1	
HEIDENHAIN DR. JOHANNES HEIDENHAIN GmbH 83301 Traunreut, Germany					