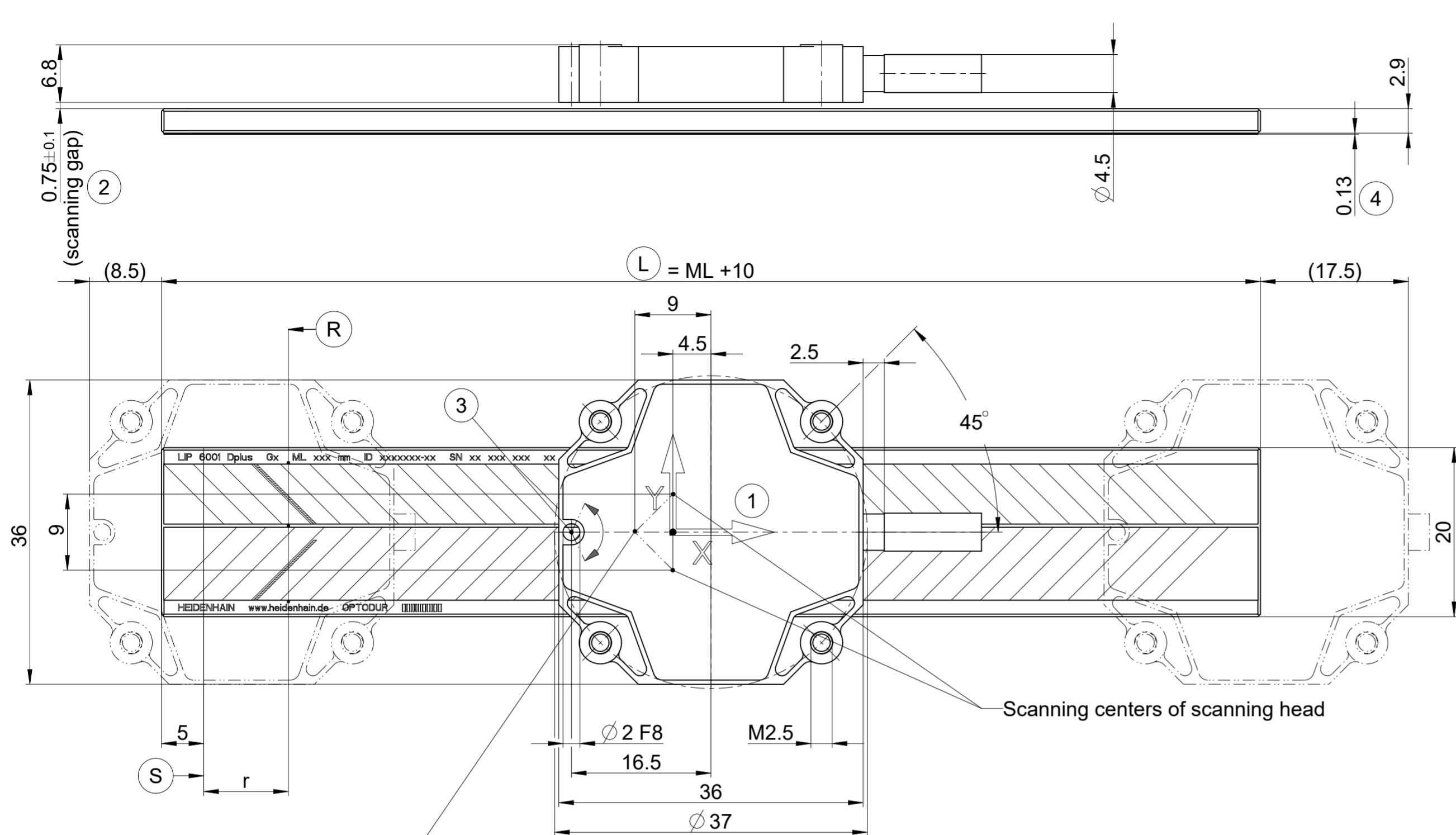
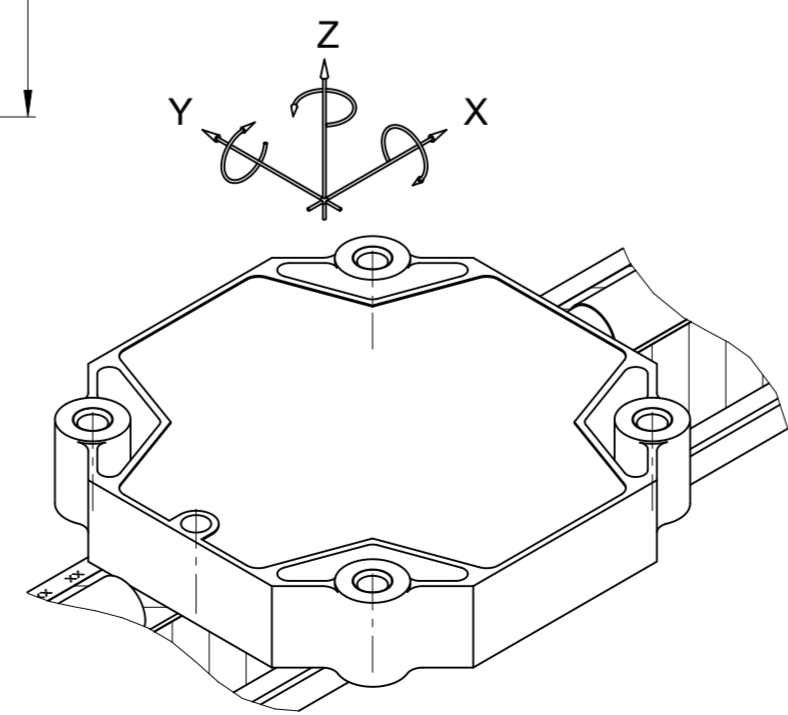
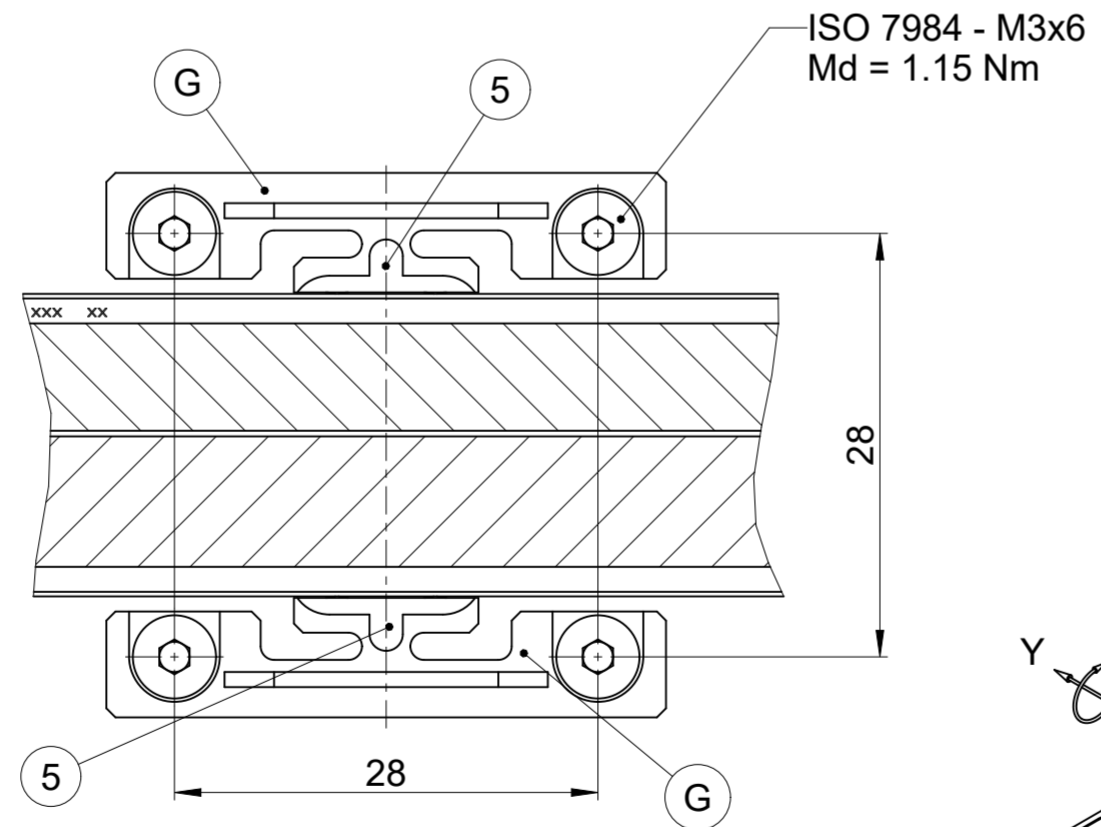


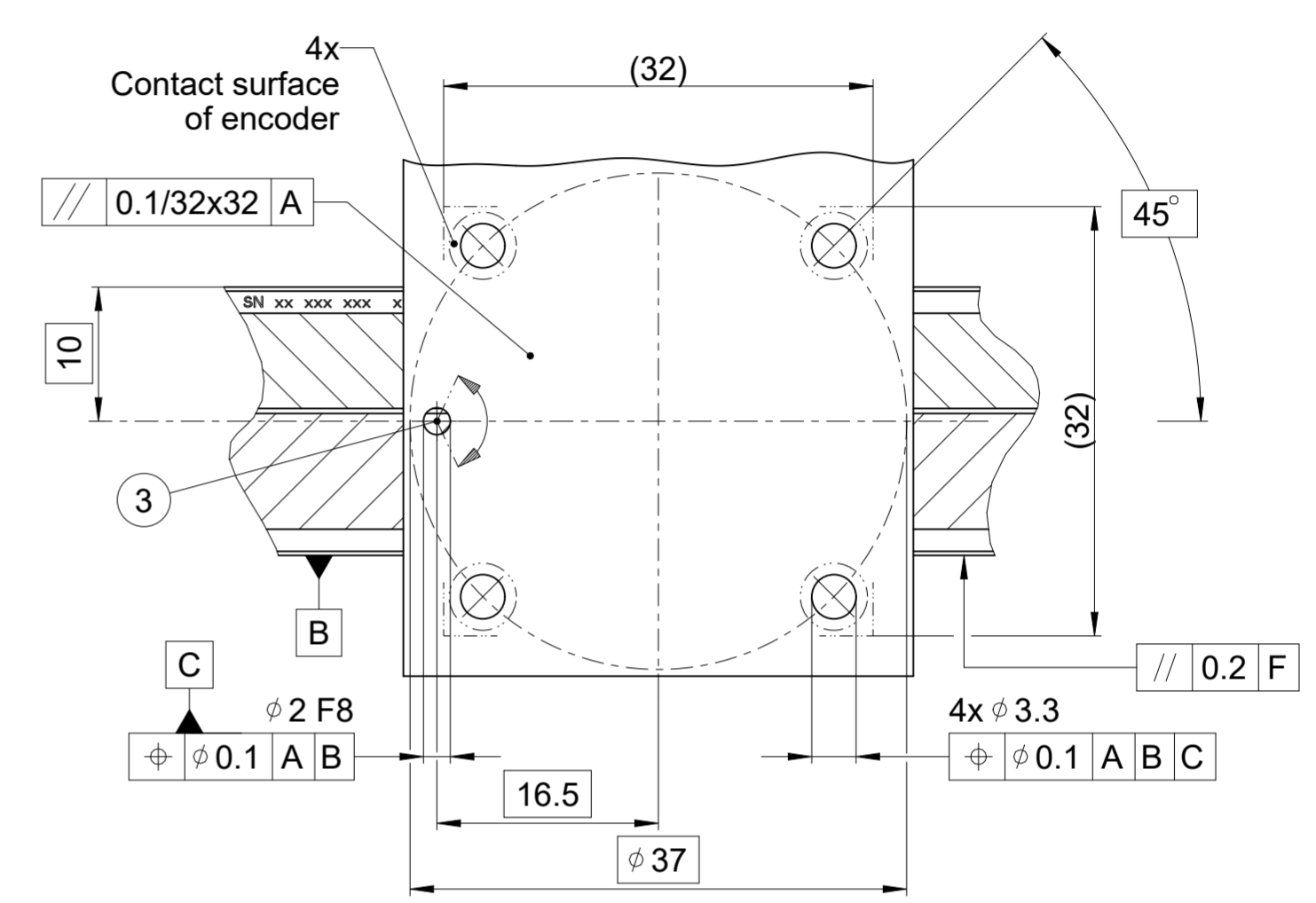
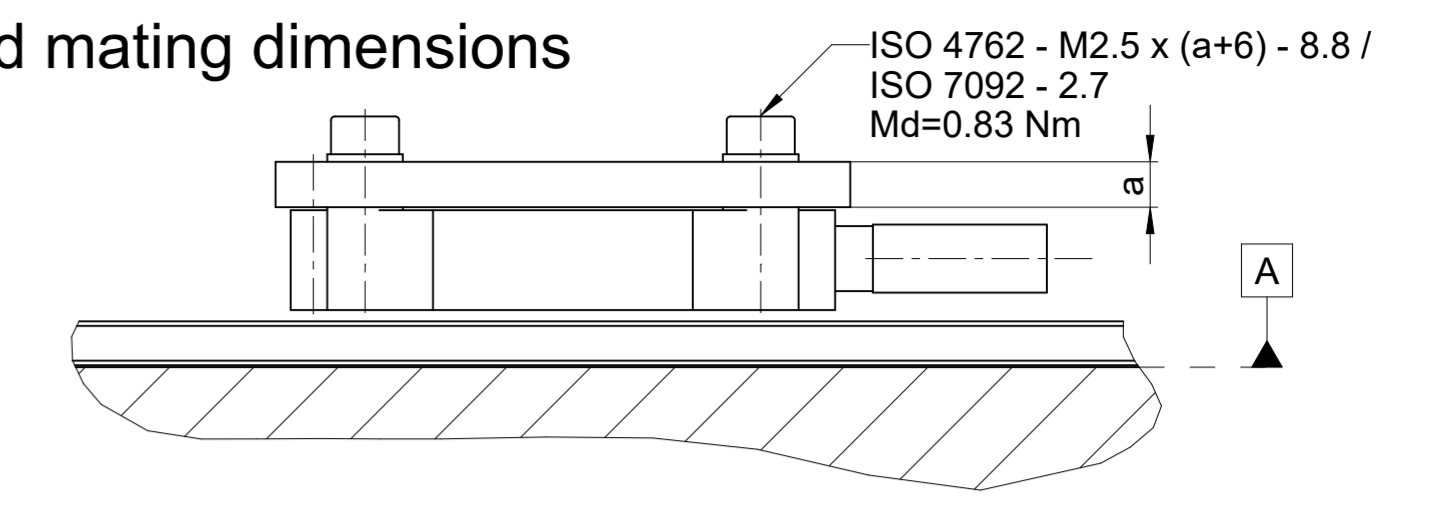
Measurement-system dimensions



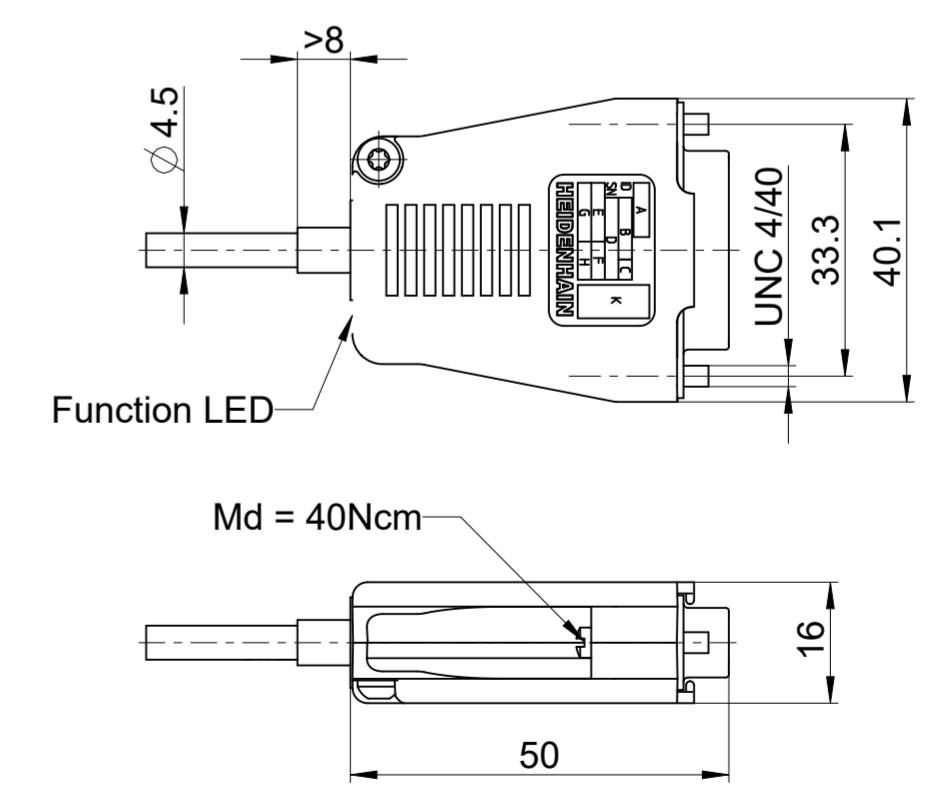
- F = Machine guideway
- r = Reference mark position from the beginning of measuring length (ML)
- L = Scale length
- R = Reference mark position
- S = Beginning of measuring length (ML)
- G = Fixed point for defining the thermal fixed point
- 1 = Direction of motion of the scanning unit for ascending positive values
- 2 = Adjustment of scanning gap
- 3 = Moiré adjustment: alignment pin Ø2m6
- 4 = Adhesive tape
- 5 = Adhesive



Required mating dimensions



15-pin D-sub scale 1:1



Maximum change during operation when mounted at mechanical tolerance limits. Optimization of Rz during mounting with ATS.		
Dimension	Incremental track	Reference mark
Z	±0,2	±0.1
Rx	±8 mrad	±2 mrad
Ry	±8 mrad	±2 mrad
Rz	±2 mrad	±0.4 mrad

Original drawing		ID number:	
Scale	Format	Change No.	C166611-05
Dimensions in mm	2:1 A2	Phase:	Serie
LIP 6031 Dplus (adhesive tape)		Tolerances as per ISO 8015	
LIP 6031 Dplus (adhesive tape)		General Tolerances ISO 2768:1989-mH ±0.2	
Anschlussmaße / Mating Dimensions		The reproduction, distribution and utilization of this document as well as the communication of its contents to others without express authorization is prohibited. Offenders will be held liable for the payment of damages. All rights reserved in the event of the grant of a patent, utility model or design. (ISO 16016)	
HEIDENHAIN		Released	Version Revision Sheet Page
DR. JOHANNES HEIDENHAIN GmbH		20.12.2023	D1359299-04 - A-01
83301 Traunreut, Germany		Document number	