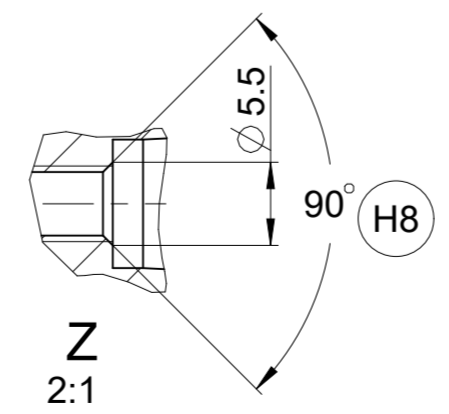
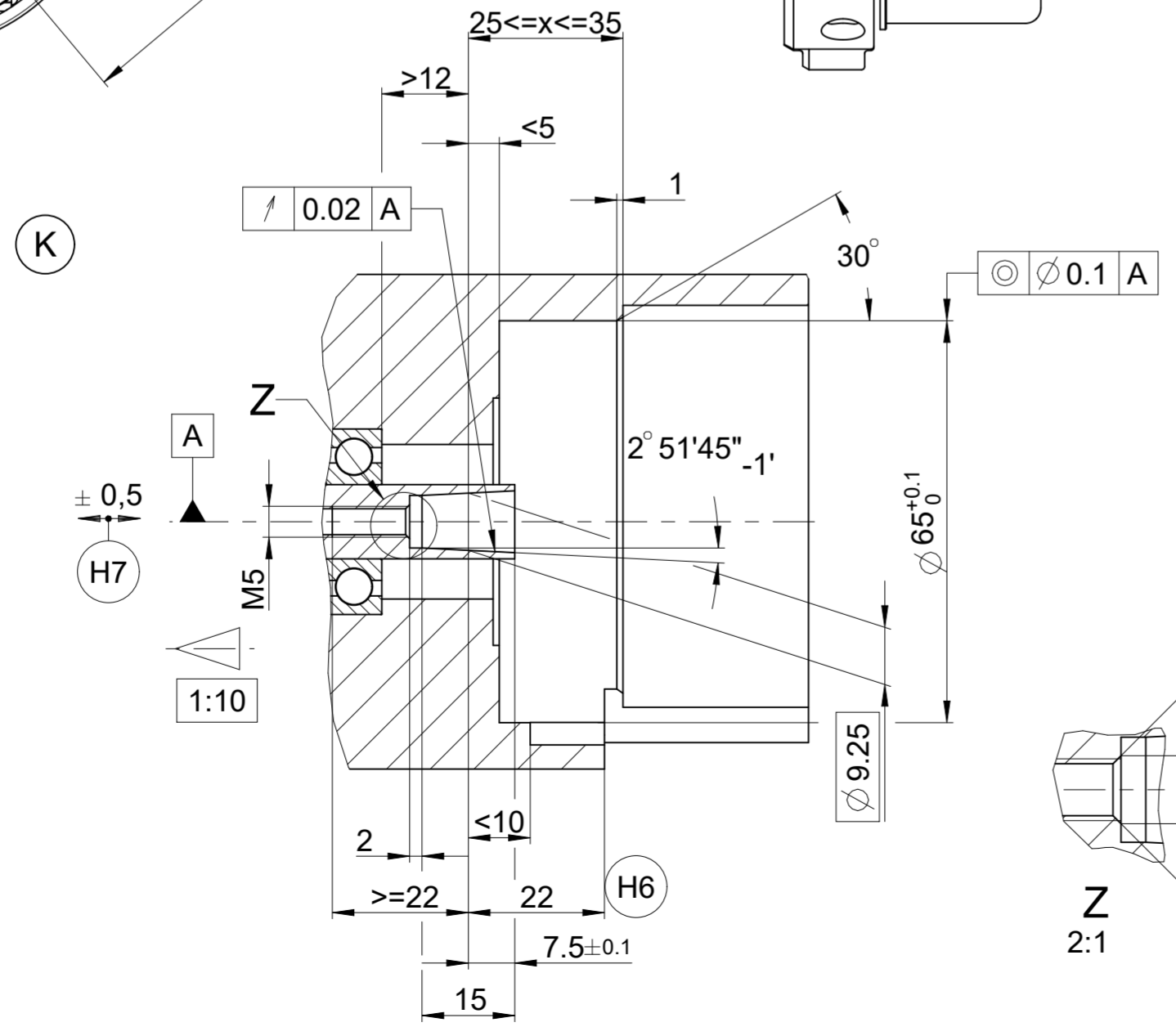
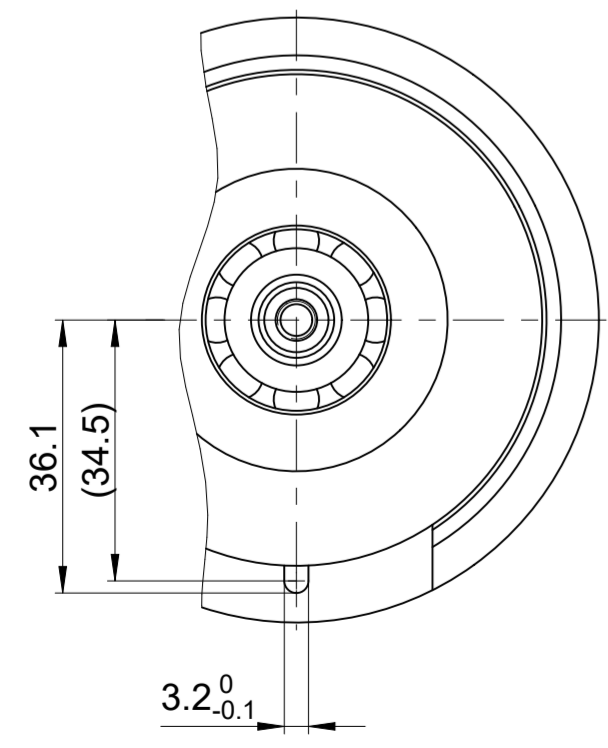


- A** = Lagerung Kundenwelle
Bearings for customer shaft
- K** = Kundenseitige Anschlussmaße
Required mating dimensions
- M** = Messpunkt Arbeitstemperatur
Operating temperature measuring point
- H1** = Klemmschraube für Kupplungsring - SW 2
Anzugsmoment 1,25 -0,2 Nm
locking screw for coupling ring - SW 2
torque 1,25 -0,2 Nm
- H2** = Selbstsichernde Schraube M5 x 50 DIN 6912 - SW 4
Anzugsmoment 5 +0,5 Nm
Self-locking screw M5 x 50 DIN 6912 - SW 4
torque 5 +0,5 Nm
- H3** = Verschlusschraube SW 3 und 4
Anzugsmoment 5 +0,5 Nm
Locking screw SW 3 and 4
torque 5 +0,5 Nm
- H4** = Abdrückgewinde M10
back-off thread M10
- H5** = Abdrückgewinde M6
back-off thread M6
- H6** = Ausführung Geber mit Flanschdose
Encoder version with flange socket
- H7** = Ausgleich von Montagetoleranzen und thermischer
Ausdehnung, keine dynamische Bewegung
Compensation of mounting tolerances and
thermal expansion, no dynamic motion
- H8** = Fase am Gewindeanfang obligatorisch für
stoffschlüssige Losdrehesicherung
Chamfer is obligatory at start of thread
for materially bonding anti-rotation lock



65B	07B	WELLA1 KUPPA1		ID number:	
				Change No.	C126098-10
				Phase:	Serie
				Tolerierung nach DIN ISO 8015	
				Allgemeintol. ISO 2768-mH ± 0.2	
				General tol. ISO 2768-mH ± 0.2	
				ERN/ECN/EQN 4xx	
				ERN	
				Anschlussmaße / Mating Dimensions	
				The reproduction, distribution and utilization of this document as well as the communication of its contents to others without express authorization is prohibited. Offenders will be held liable for the payment of damages. All rights reserved in the event of the grant of a patent, utility model or design. (ISO 16016)	
				Version	Revision
				Sheet	Page
				1 of 1	
				D1351634-00-A-01	
				Document number	
HEIDENHAIN DR. JOHANNES HEIDENHAIN GmbH 83301 Traunreut, Germany					