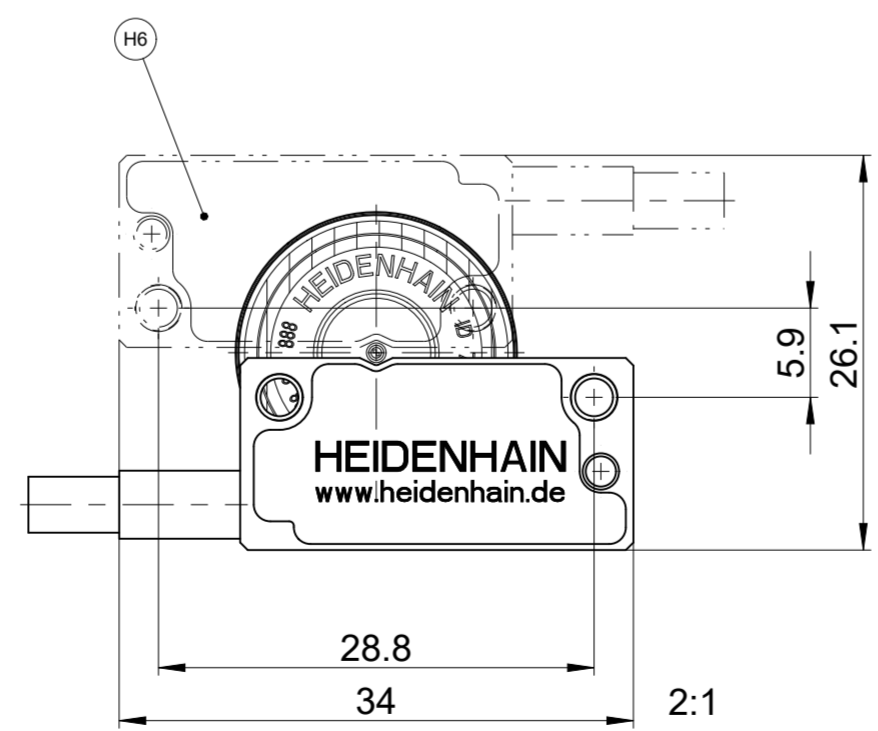
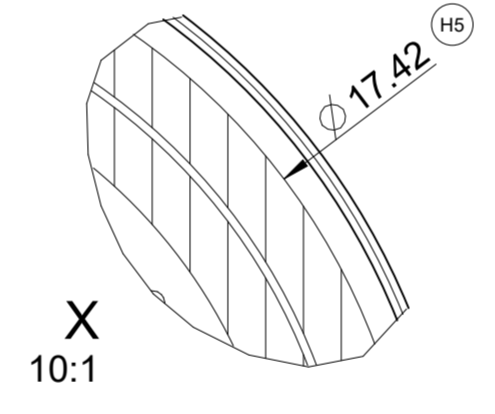
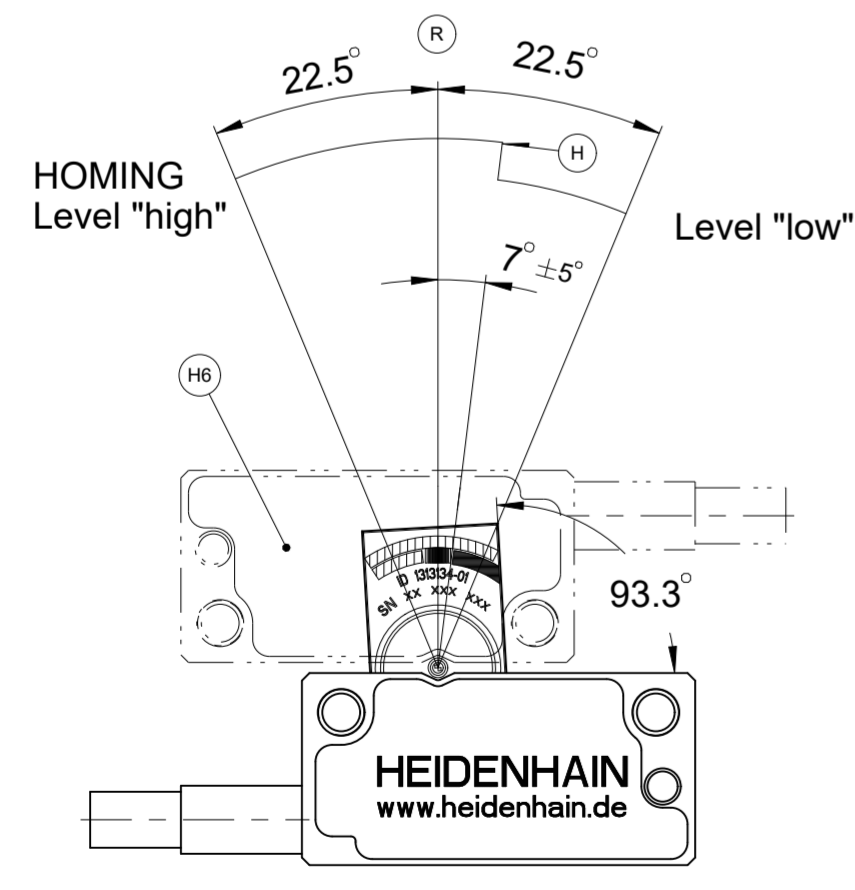
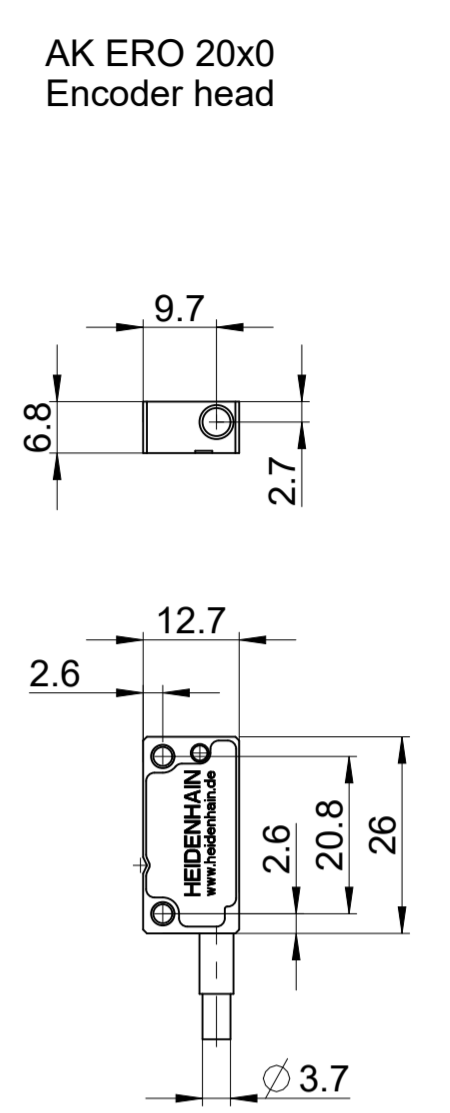
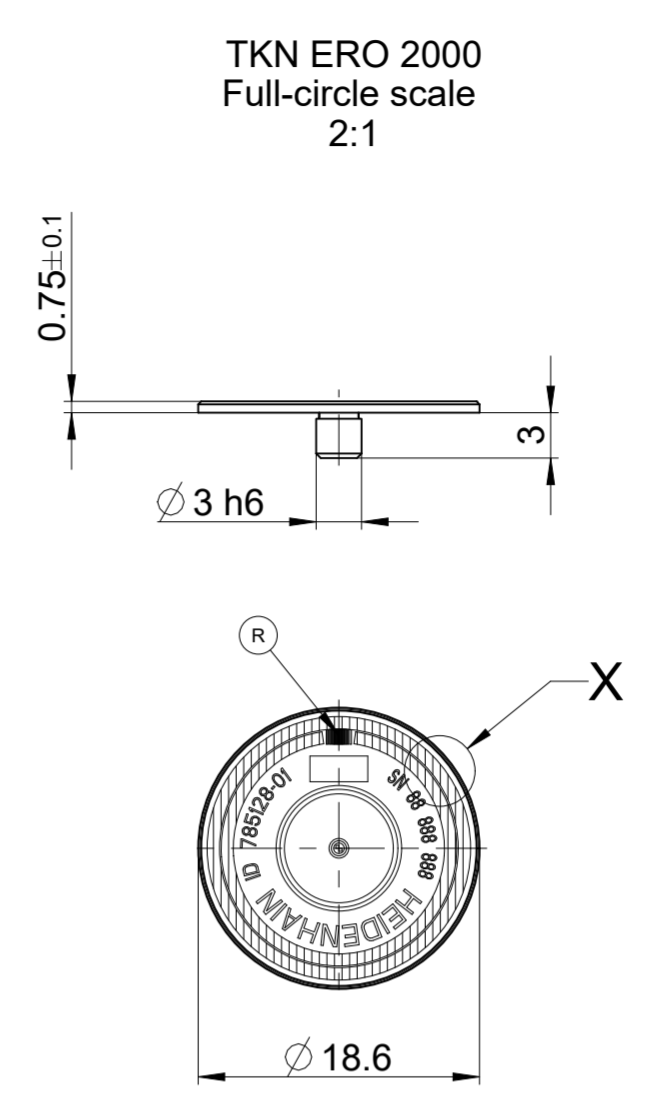
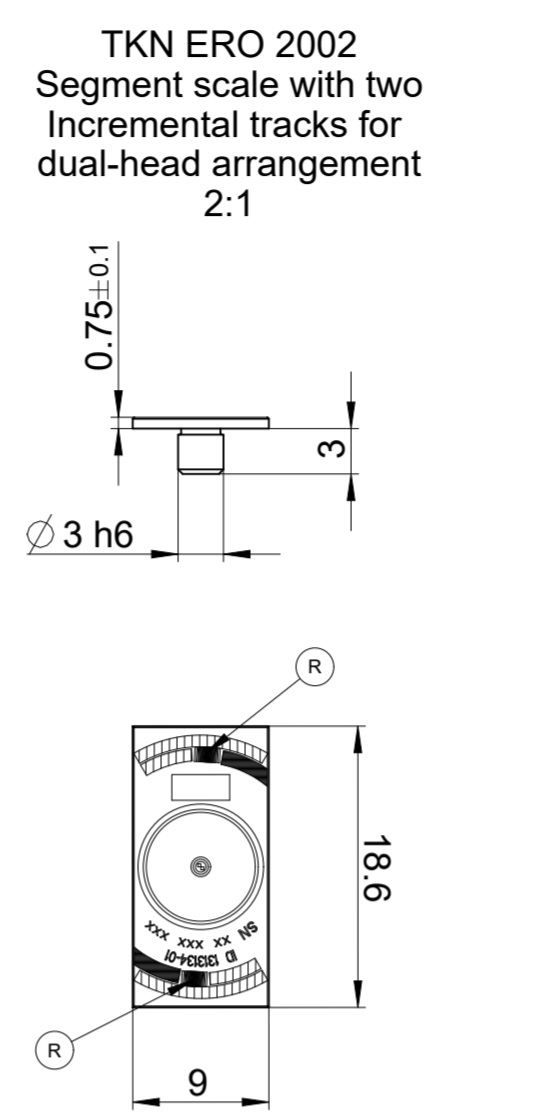
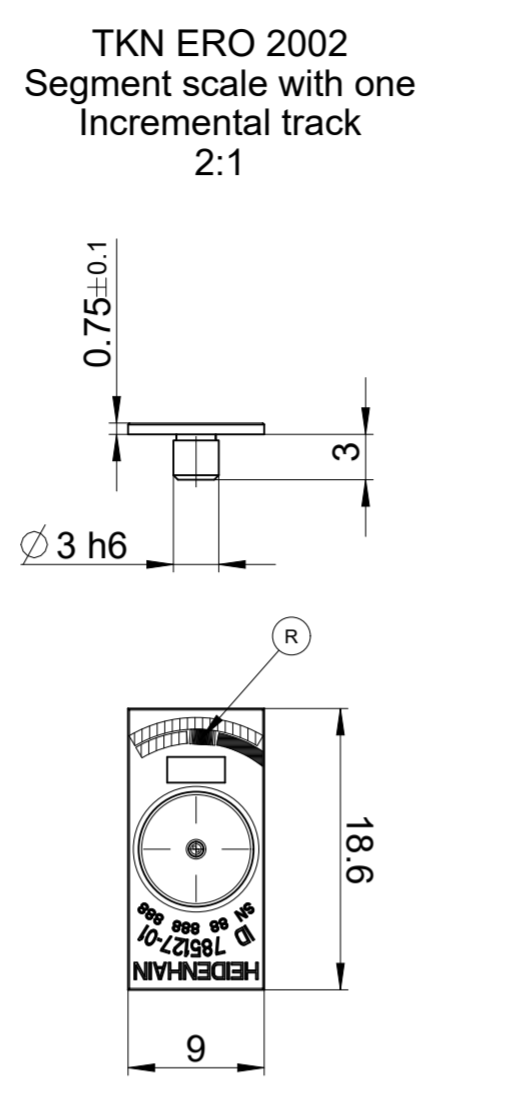
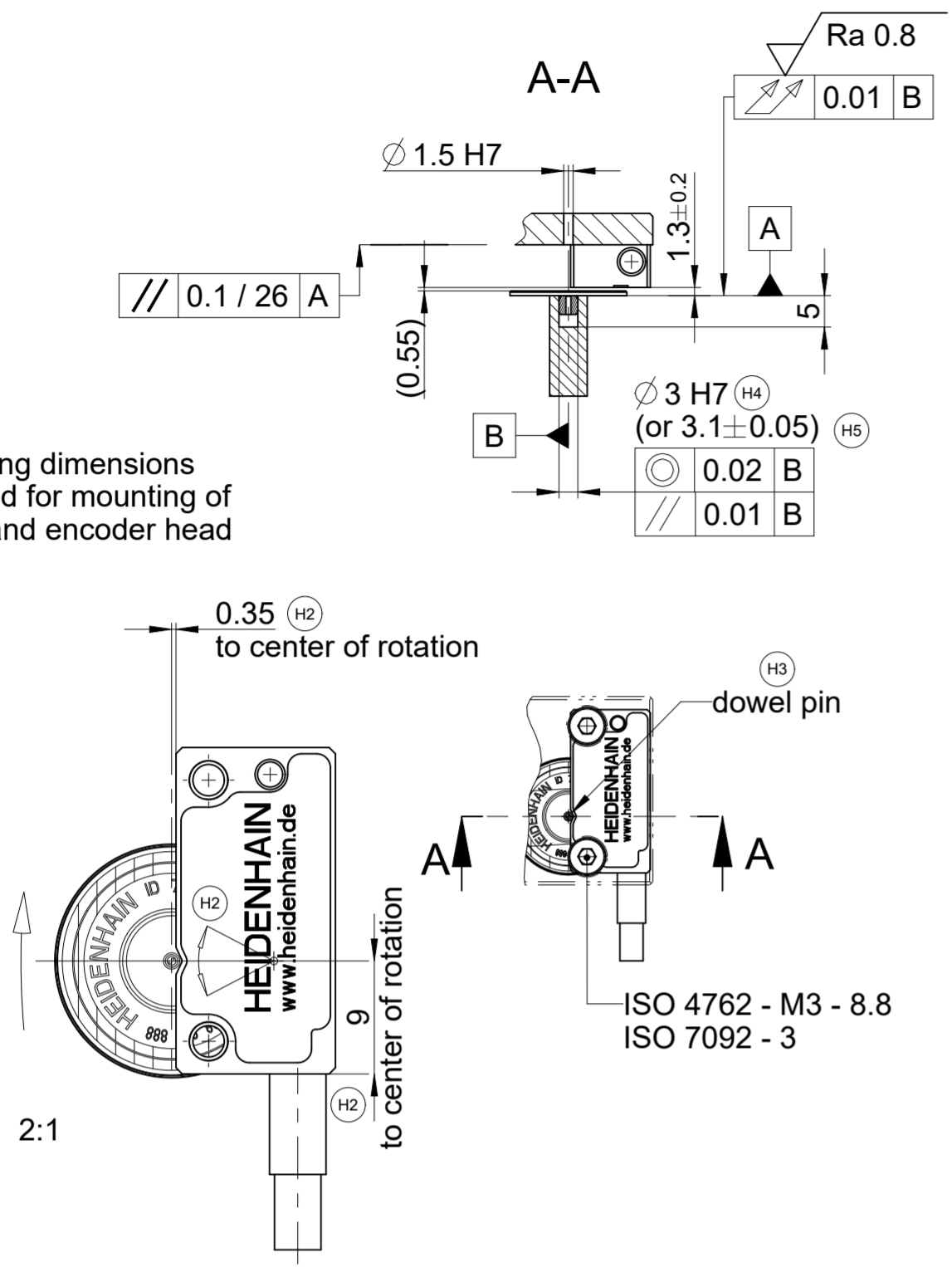
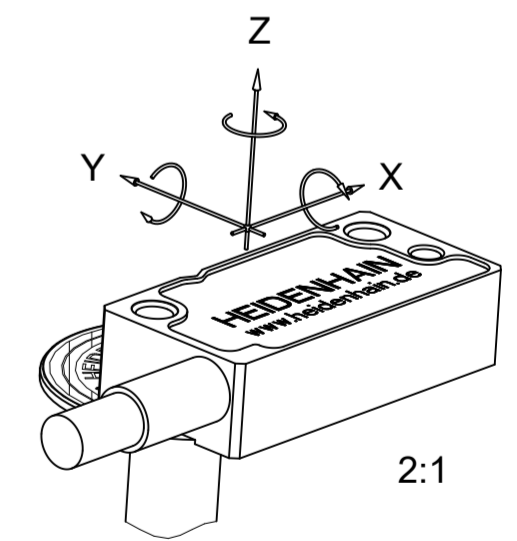


Mounting dimensions required for mounting of scale and encoder head



- (H) Signal-edge of Homing track
- (H1) Direction of positive rotation
- (H2) Fine-adjustment of encoder-head to reach best incremental signal (within clearance of the mounting screws); given measures are nominal (to be removed after adjustment)
- (H3) Optional for positioning and Moiré-adjustment (to be removed after adjustment)
- (H4) Option for mechanical centering of the scale by using a hole basis fit
- (H5) Option for optical centering of the scale by using graduation-circumcircle (outer edge of glass not suitable for this purpose)
- (H6) Optional: dual-head arrangement
- (R) Reference mark
- (B) Axis of rotation



Mounting tolerances; given tolerances in combination

X	Y	Z	Rx	Ry	Rz
*	*	± 0.2	$\pm 4 \text{mrad}$	$\pm 4 \text{mrad}$	*

* to be adjusted, see (H2)

alternative cable outlet and connector available: see D1223068

Original drawing		Scale		Format		ERO 20x0 2500SP		ID number:	
1:1		A2		A2		ERO 20x0		C106812-10	
Dimensions in mm		1:1		A2		Anschlussmaße / Mating Dimensions		Serie	
								Tolerierung nach DIN ISO 8015	
								Tolerances as per DIN ISO 8015	
								Allgemeintol. ISO 2768-mH ± 0.2	
								General tol. ISO 2768-mH ± 0.2	
								The reproduction, distribution and utilization of this document as well as the communication of its contents to others without express authorization is prohibited. Offenders will be held liable for the payment of damages. All rights reserved in the event of the grant of a patent, utility model or design. (ISO 16016)	
								Version Revision Sheet Page	
								1 of 1	
								D1331764-00-A-01	
								Document number	