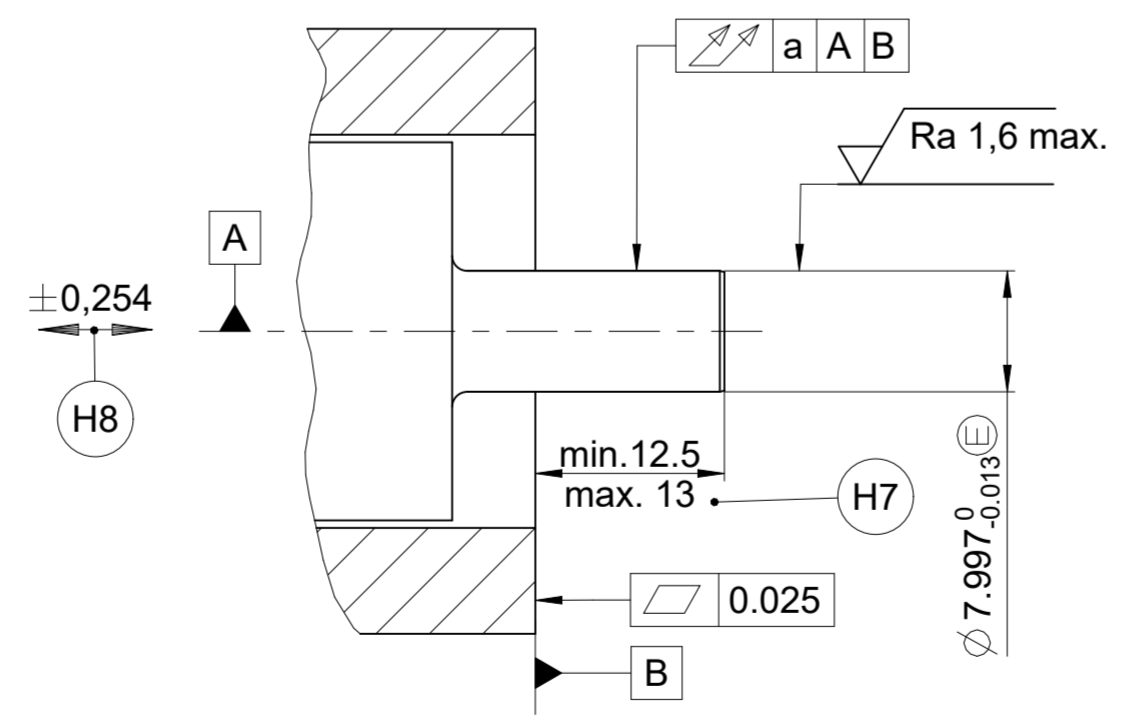
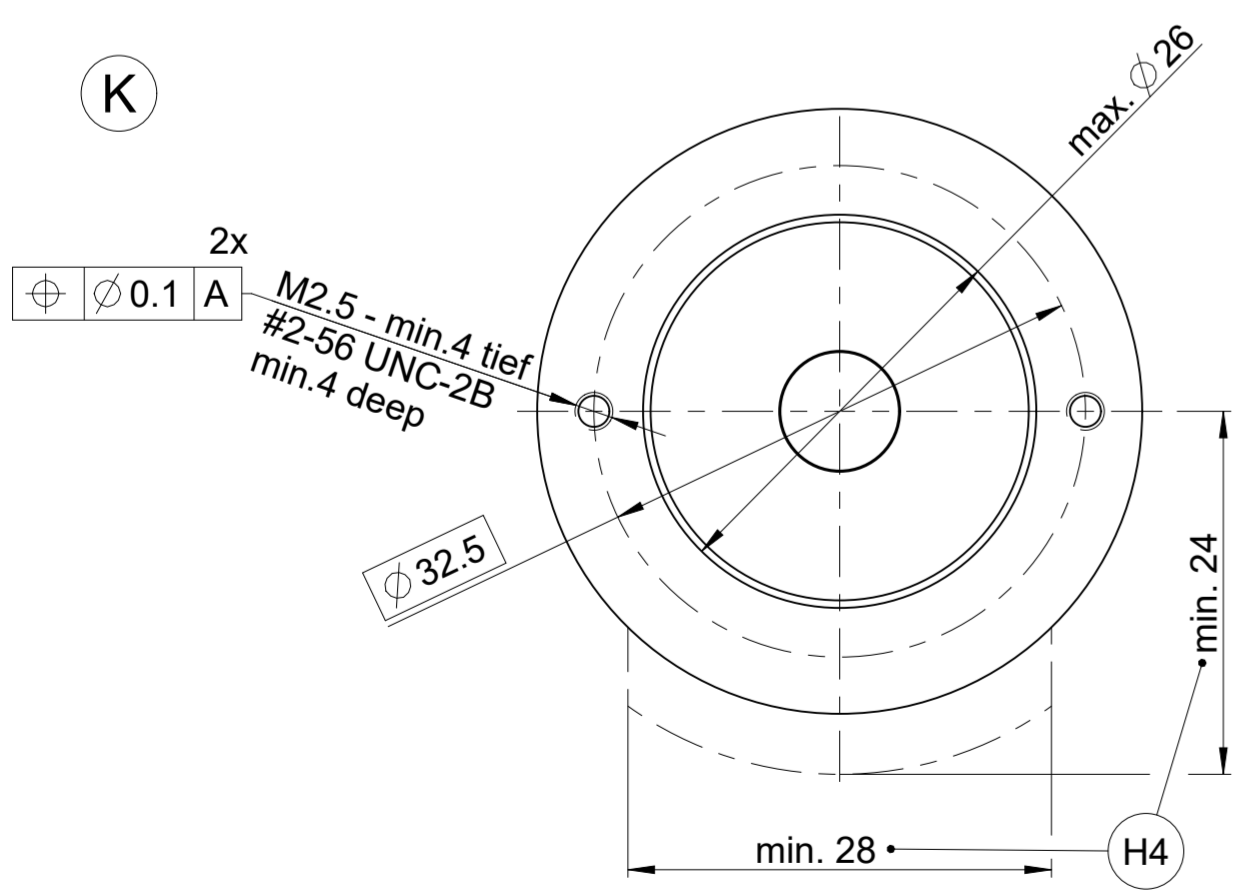
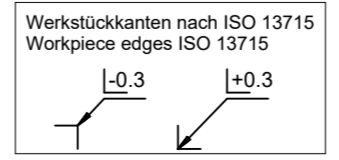


- A** = Lagerung Kundenwelle
Bearing for customer shaft
- K** = Kundenseitige Anschlussmaße
Required mating dimensions
- M** = Messpunkte Arbeitstemperatur
Operating temperature measuring points
- H1** = Stiftleiste 15-pol. axial
Plug connector 15 pin axial
- H2** = Stiftleiste 15-pol. radial
Plug connector 15 pin radial
- H3** = Bügel in Montagestellung
slide pulled out in mounting position
- H4** = Erforderlicher Einbauraum
Required installation space
- H5** = Gewindestift, Anzugsmoment 0,14 ±0,01 Nm
Setscrew, Torque 0,14 ±0,01 Nm
- H6** = Befestigungsschraube
- M2,5 x 5,25 Id.-Nr. 548595-02 Torx T8
- #2-56 UNC x 5,25 Id.-Nr. 548595-03 Torx T8
Anzugsmoment 0,21 ±0,02 Nm
Mounting screw
- M2,5 x 5,25 Id.-Nr. 548595-02 Torx T8
- #2-56 UNC x 5,25 Id.-Nr. 548595-03 Torx T8
torque 0,21 ±0,02 Nm
- H7** = Maßangabe für JH-Standardkabel
Dimension for JH-standard cable
- H8** = Maximal zulässige Bewegung zwischen Welle und Stator inklusive thermischer Ausdehnung, gesamter Wert dynamisch zulässig
Maximum permissible motion between shaft and stator including thermal expansion, entire value dynamically permissible
- H9** = Referenzmarken-Lage ±10°
Referenze mark position ±10°
- H10** = Drehrichtung der Welle für Ausgangssignale gemäß Schnittstellen-Beschreibung
Direction of shaft rotation for output signals according to interface-description



STRIA1	ANSIA1	WERKA3	a
500	> 100	ME	0.05mm
512	≤ 5000		
625			
1000	> 5000	ME	0.03mm
1024	≤ 10000		
1250			



Original drawing		R35i Gen.2 WELLA1:1HA NADUA:8mm		ID number:
Scale		R35i		Change No. C112481-05
Format		Anschlussmaße / Mating Dimensions		Phase: Serie
Dimensions in mm	2:1	A2		Tolerierung nach DIN ISO 8015
				Tolerances as per DIN ISO 8015
				Allgemeintol. ISO 2768-mH ±0.2
				General tol. ISO 2768-mH ±0.2
The reproduction, distribution and utilization of this document as well as the communication of its contents to others without express authorization is prohibited. Offenders will be held liable for the payment of damages. All rights reserved in the event of the grant of a patent, utility model or design. (ISO 16016)				
HEIDENHAIN			Version	Revision
DR. JOHANNES HEIDENHAIN GmbH			Sheet	Page
83301 Traunreut, Germany			1	1
			D1323129-00-A-01	
			Document number	

896 200 A2