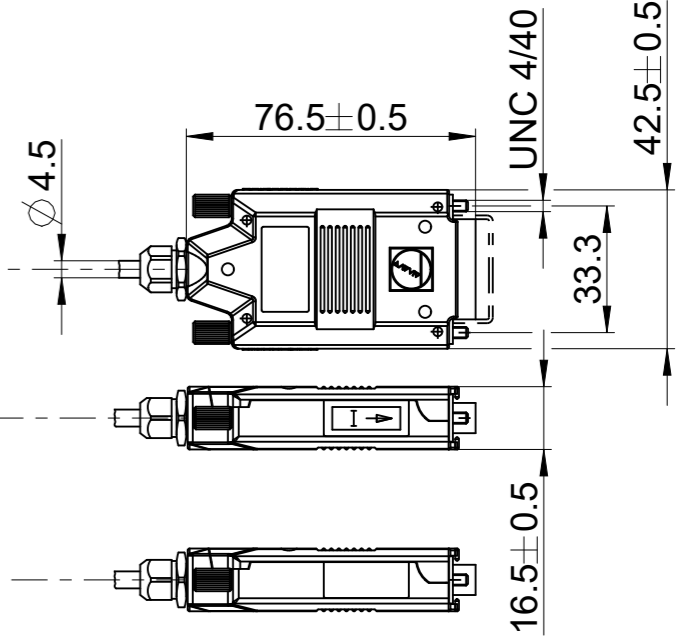


Paßmaß	Abmaße
∅ 20h7	0/-0,021

Anbau mit stehender Messplatte: siehe Blatt 2
 Installation with vertical grid plate see sheet 2



I / II = Messrichtungen / Measuring directions
 F = Maschinenführung / Machine guideway
 * = Max. Änderung bei Betrieb / Max. change during operation

- (H1) = Schlauchtülle für Vakuum-Anschluss (für Befestigung auf ebenen Flächen / Steinplatten) / Screw nozzle for vacuum connection (mounting on flat surfaces / flagstones)
- (H2) = Bei Montage justiert / Adjusted when mounted

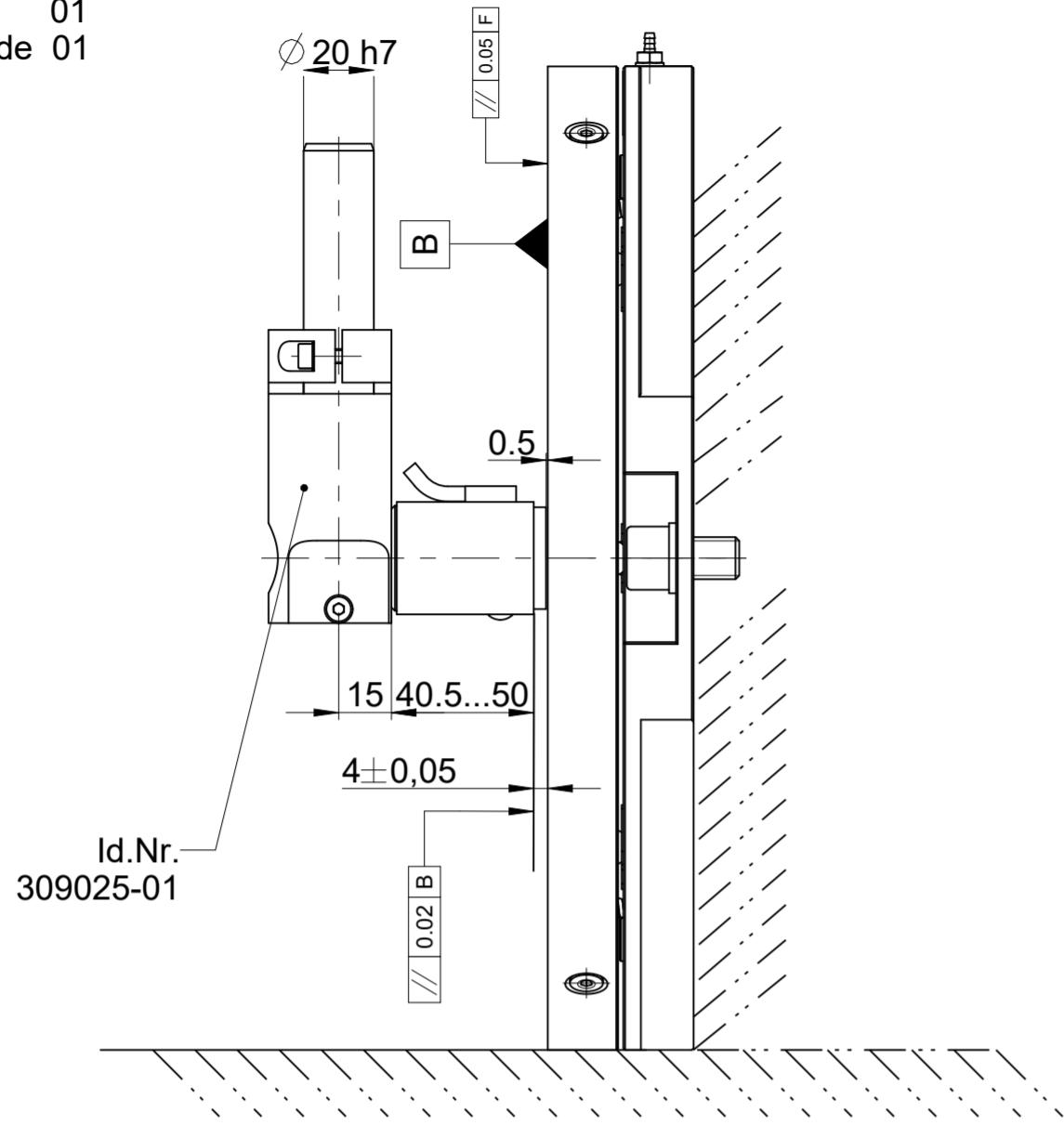
Name	Measuring range	A	B	C	ID number
KGM 281	∅ 140mm	204	180	170	1313026-01
KGM 282	∅ 230mm	304	280	262	1313025-01

Original drawing		KGM 281 / 282		ID number:
Scale	Format	KGM 281 / 282		Change No. C107079-75
Dimensions in mm	1:2 A3	Anschlussmaße / Mating Dimensions		Phase: Serie
				Tolerierung nach DIN ISO 8015 Tolerances as per DIN ISO 8015
				Allgemeintol. ISO 2768-mH ≤6mm:±0,2 General tol. ISO 2768-mH ≤6mm:±0,2

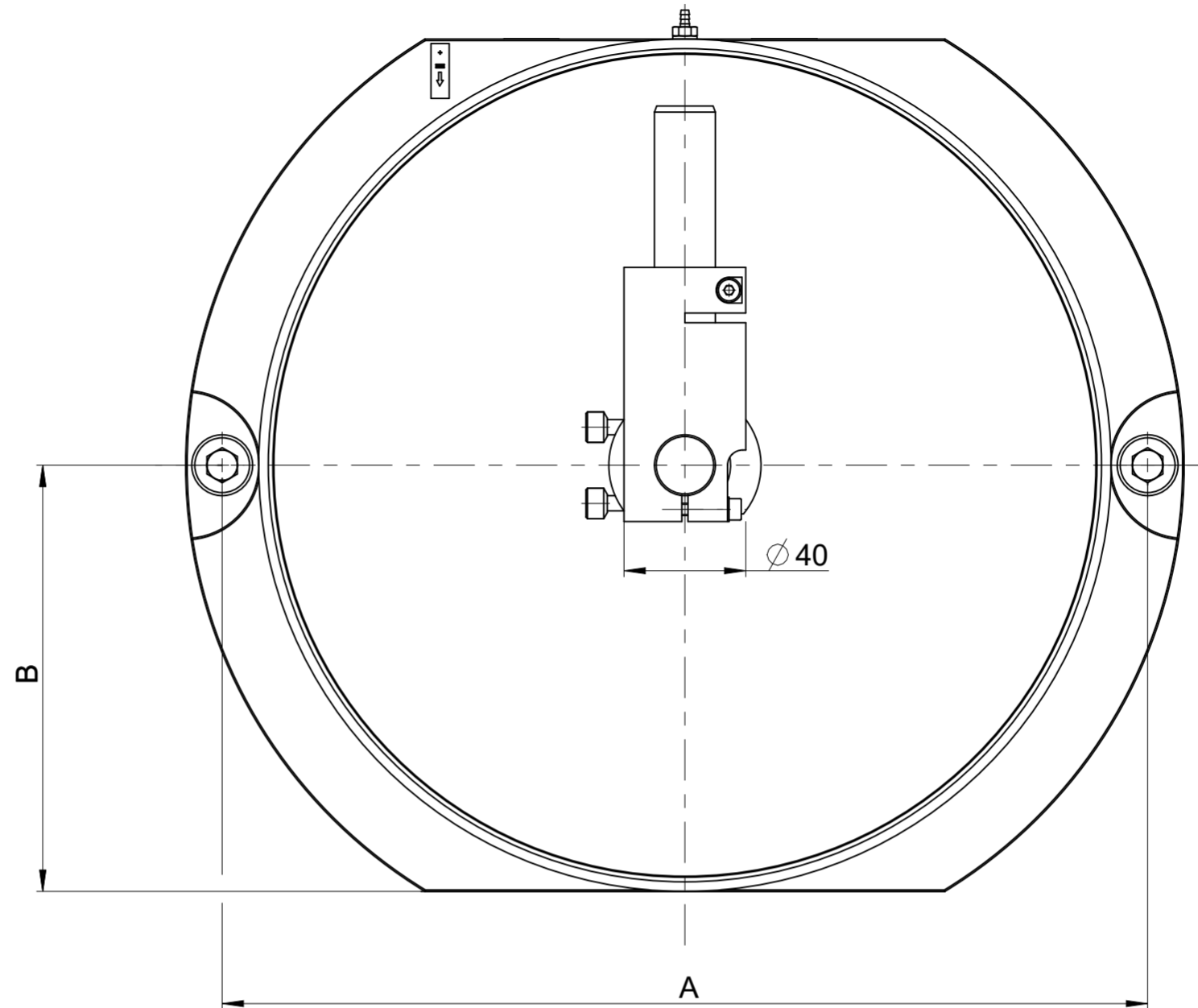
The reproduction, distribution and utilization of this document as well as the communication of its contents to others without express authorization is prohibited. Offenders will be held liable for the payment of damages. All rights reserved in the event of the grant of a patent, utility model or design. (ISO 16016)

Paßmaß	Abmaße
∅ 20h7	0/-0,021

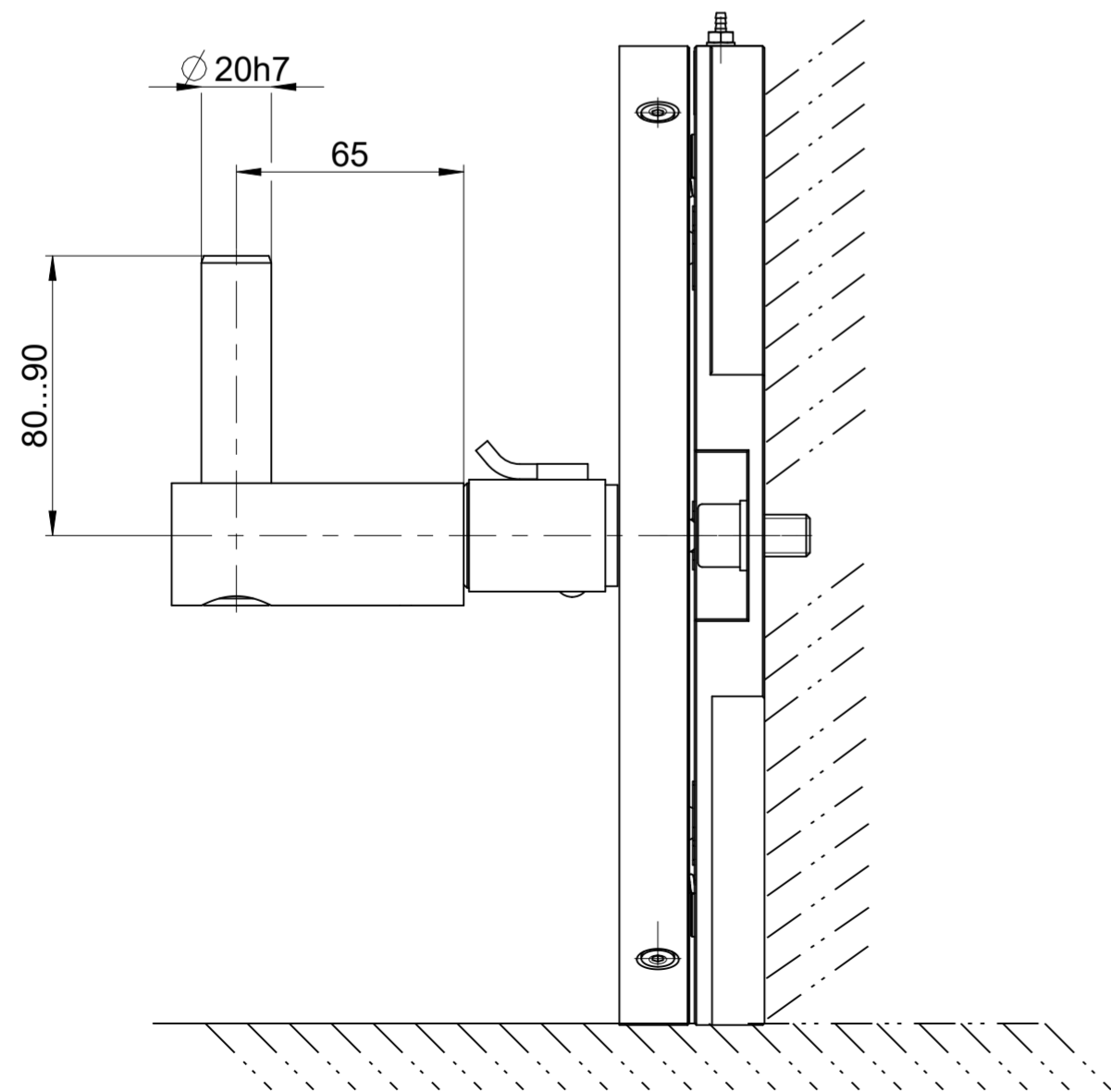
Anbauart 01
Mounting mode 01



Id.Nr.
309025-01



Anbauart 02
Mounting mode 02



Anbau mit liegender Messplatte: siehe Blatt 1
Installation with horizontal grid plate see sheet 1

Name	Measuring range	A	B	ID number
KGM 281	∅ 140mm	204	90	1313026-01
KGM 282	∅ 230mm	304	140	1313025-01

				ID number:	
				Change No.	C107079-75
				Phase:	Serie
				Tolerierung nach DIN ISO 8015	
				Allgemeintol. ISO 2768-mH	±0,2
				General tol. ISO 2768-mH	±0,2
The reproduction, distribution and utilization of this document as well as the communication of its contents to others without express authorization is prohibited. Offenders will be held liable for the payment of damages. All rights reserved in the event of the grant of a patent, utility model or design. (ISO 16016)					
				Version	Revision
				Sheet	Page
				2 of 2	
				D1319988-00 - A-01	
				Document number	

HEIDENHAIN
DR. JOHANNES HEIDENHAIN GmbH
83301 Traunreut, Germany

D1319988-00 - A-01
Document number