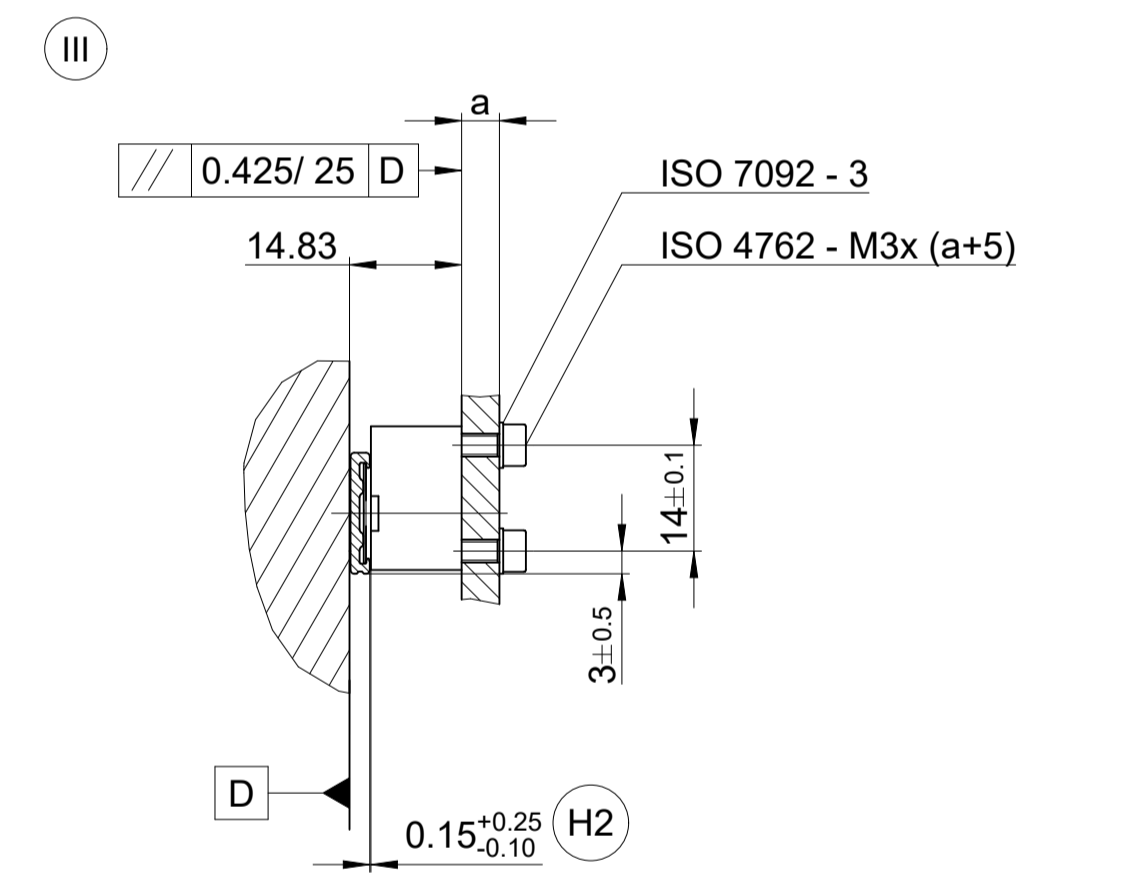
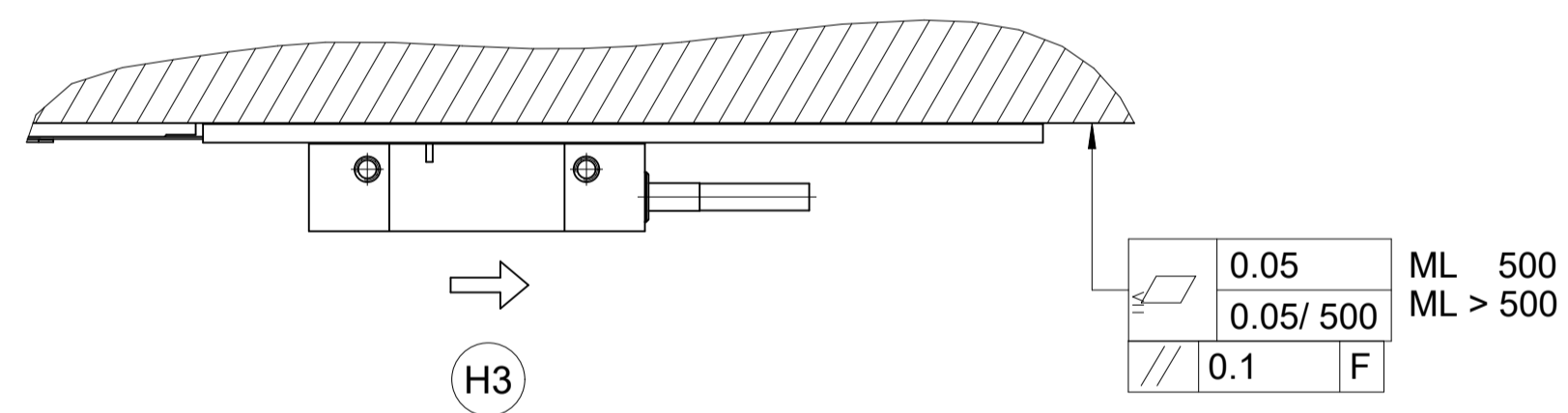
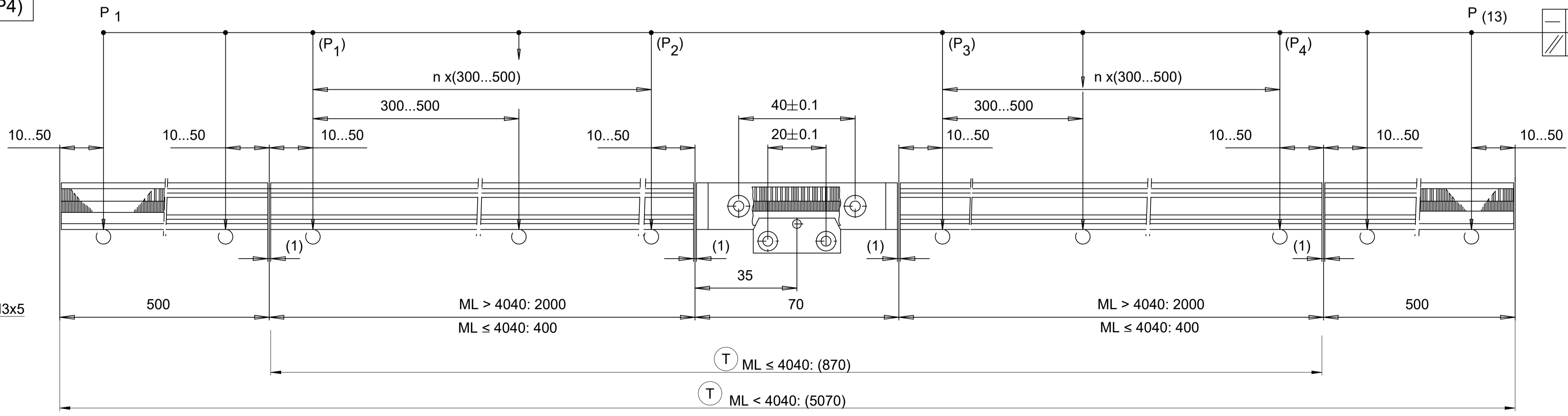


	d	R	R
		Feste Verlegung Rigid configuration	Wechselbiegung Frequent flexing
PUR	D 3.7 mm	> 8 mm	≥ 40 mm
PUR	D 2.9 mm	> 6 mm	≥ 30 mm



ML > 4040: P1 ... P13  
ML ≤ 4040: (P1 ... P4)



- I II III = Montagemöglichkeiten / Mounting options
- F = Maschinenführung / Machine guideway
- \* = Anbafehler plus dyn. Führungsfehler / Mounting failure plus dyn. failures of guideway
- P = Messpunkte zum Ausrichten / Gauging points for alignment
- S = Beginn der Messlänge ML / Beginning of measuring length ML
- T = Träger-Länge / Carrier length
- H1 = Optische Mittellinie / Optical centreline
- H2 = Montageabstand Abtastkopf zu Profil / Mounting gap
- H3 = Bewegungsrichtung der Abtasteinheit für Ausgangssignale gemäß Schnittstellenbeschreibung / Direction of scanning unit motion for output signals in accordance with interface description

Original drawing		LIC 31x7		ID number:	C160627-05
Scale		Format		Change No.	Serie
Dimensions in mm		Anschlussmaße / Mating Dimensions		Tolerances as per ISO 8015	
1:1		A1		General Tolerances ISO 2768-1:2008-mH ±0.2	
The reproduction, distribution and utilization of this document as well as the communication of its contents to others without express authorization is prohibited. Offenders will be held liable for the payment of damages. All rights reserved in the event of the grant of a patent, utility model or design. (ISO 18015)					
HEIDENHAIN DR. JOHANNES HEIDENHAIN GmbH 83301 Traunreut, Germany				Released	Version   Revision   Sheet   Page
				15.12.2023	D1312214-02 - A-01
					1 of 1