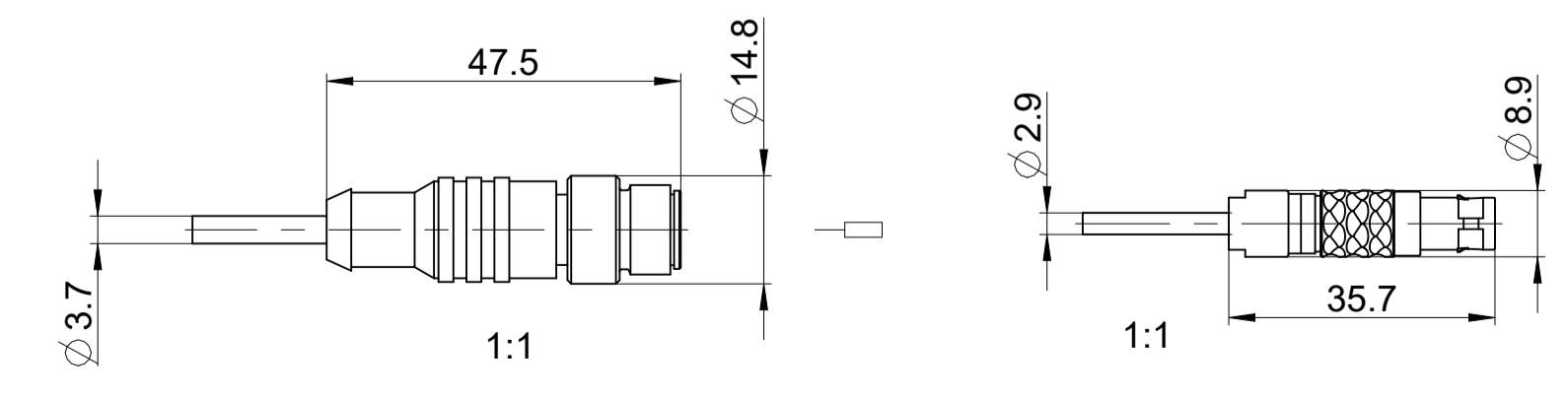
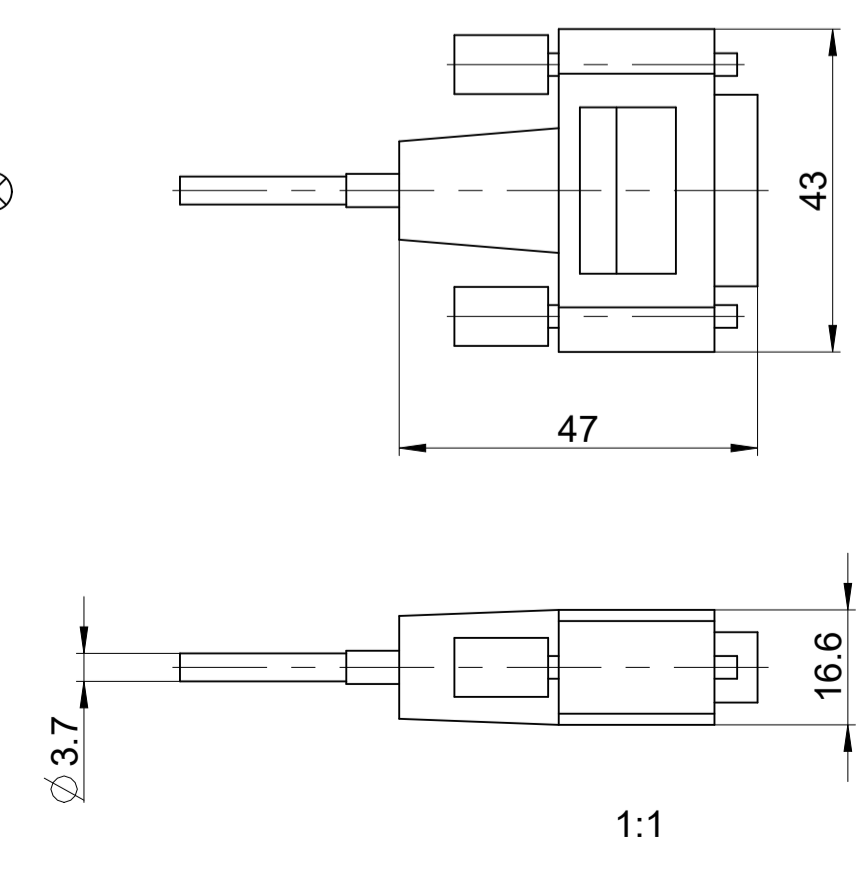
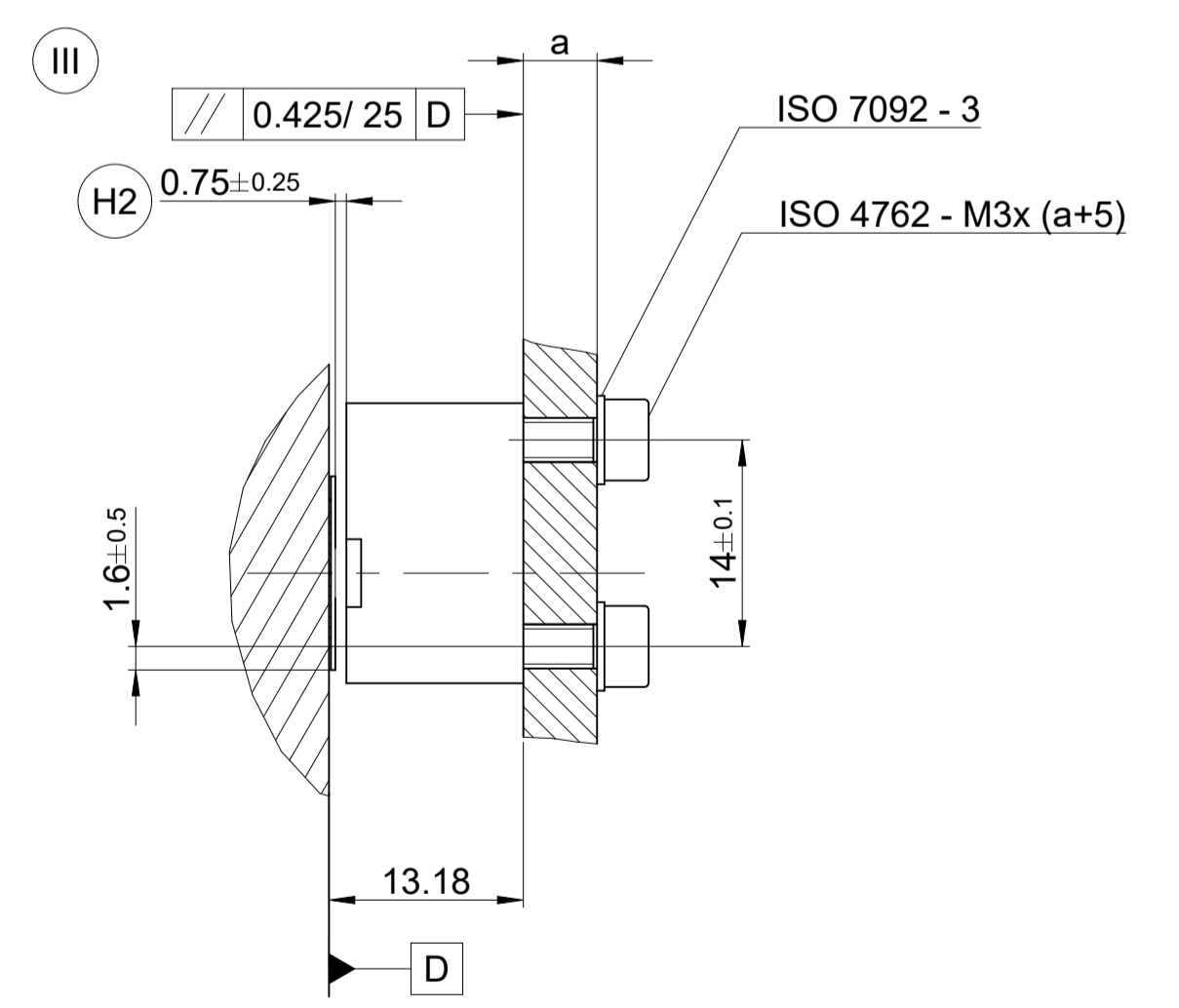
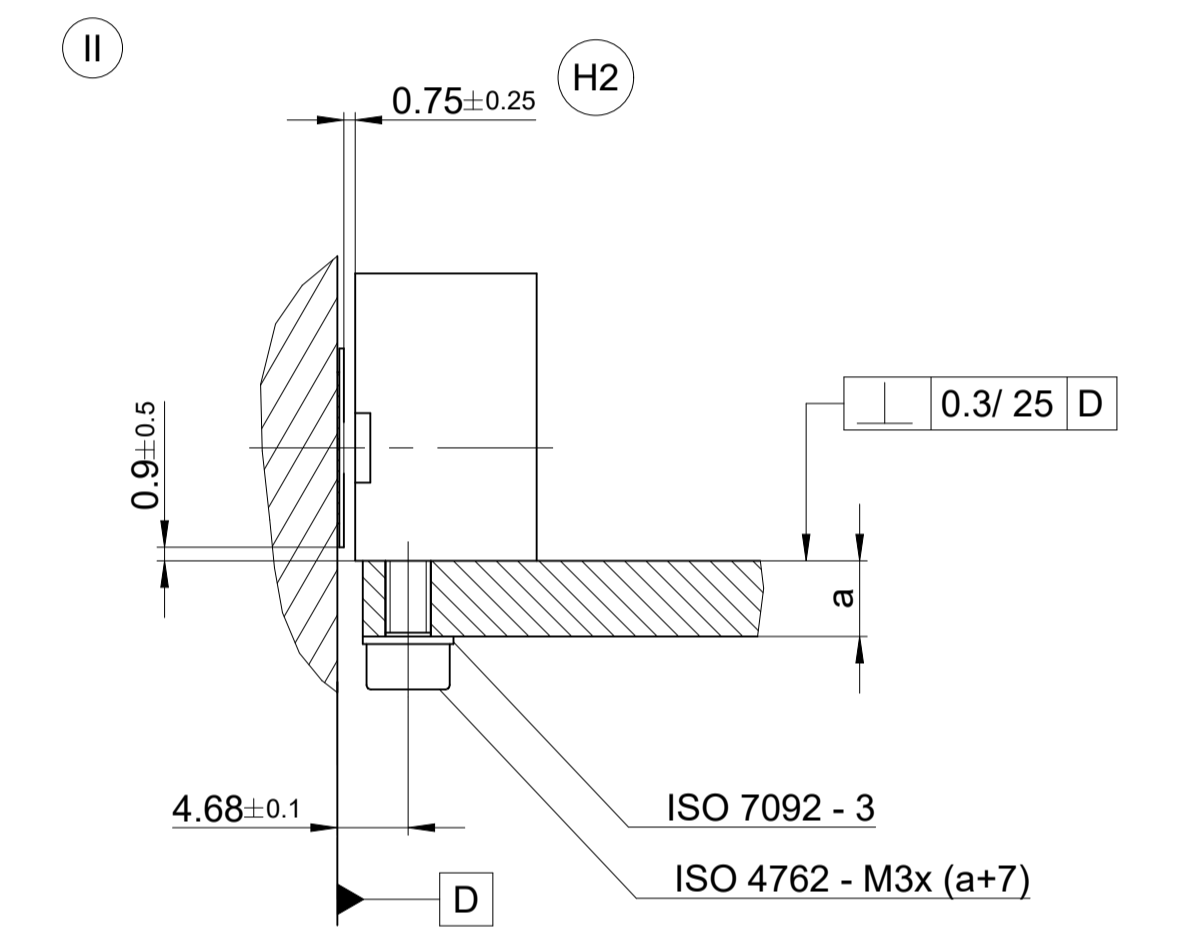
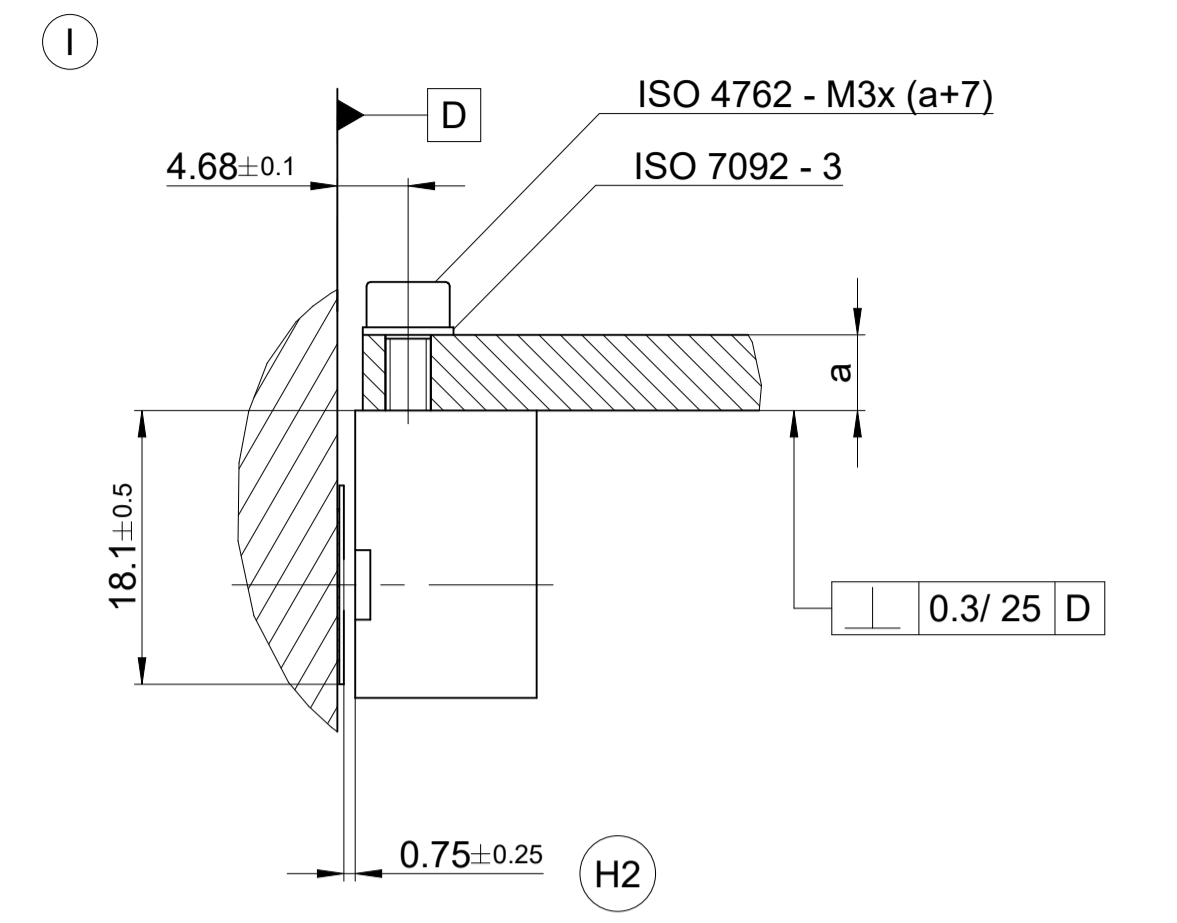
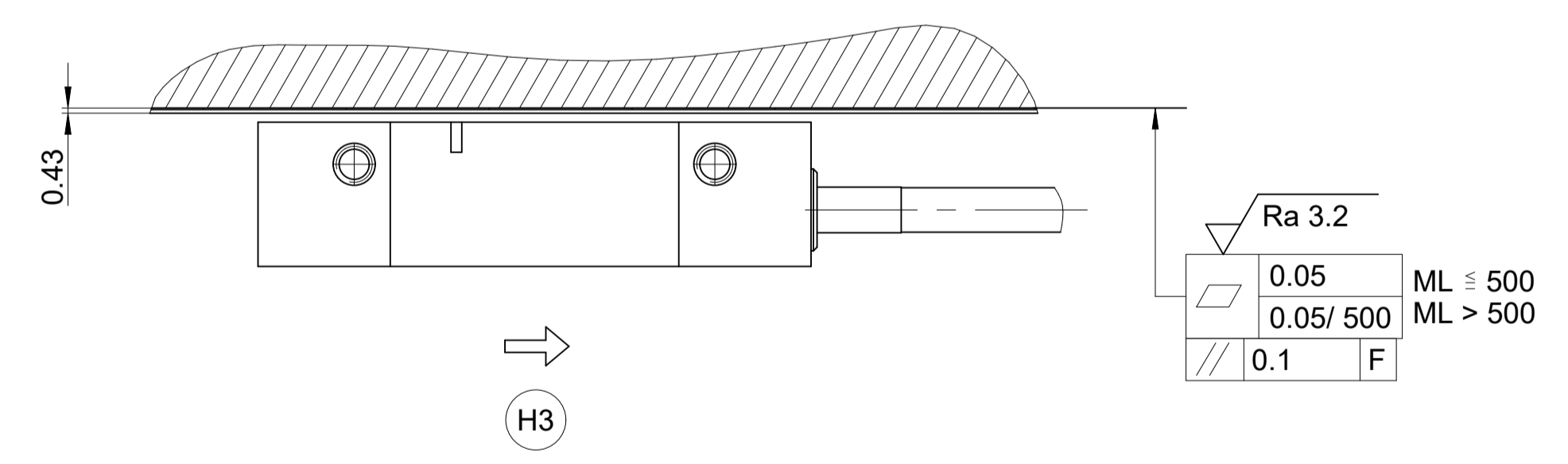
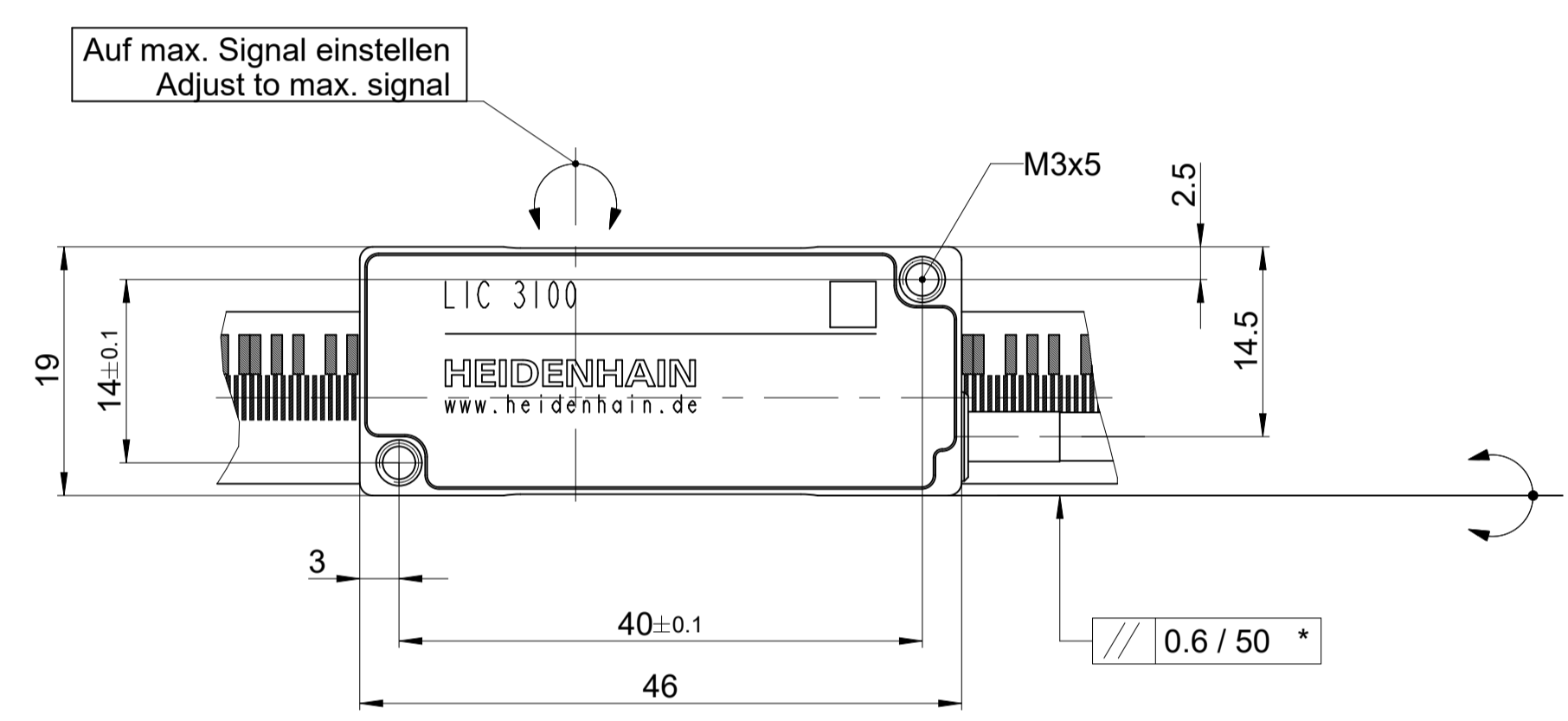
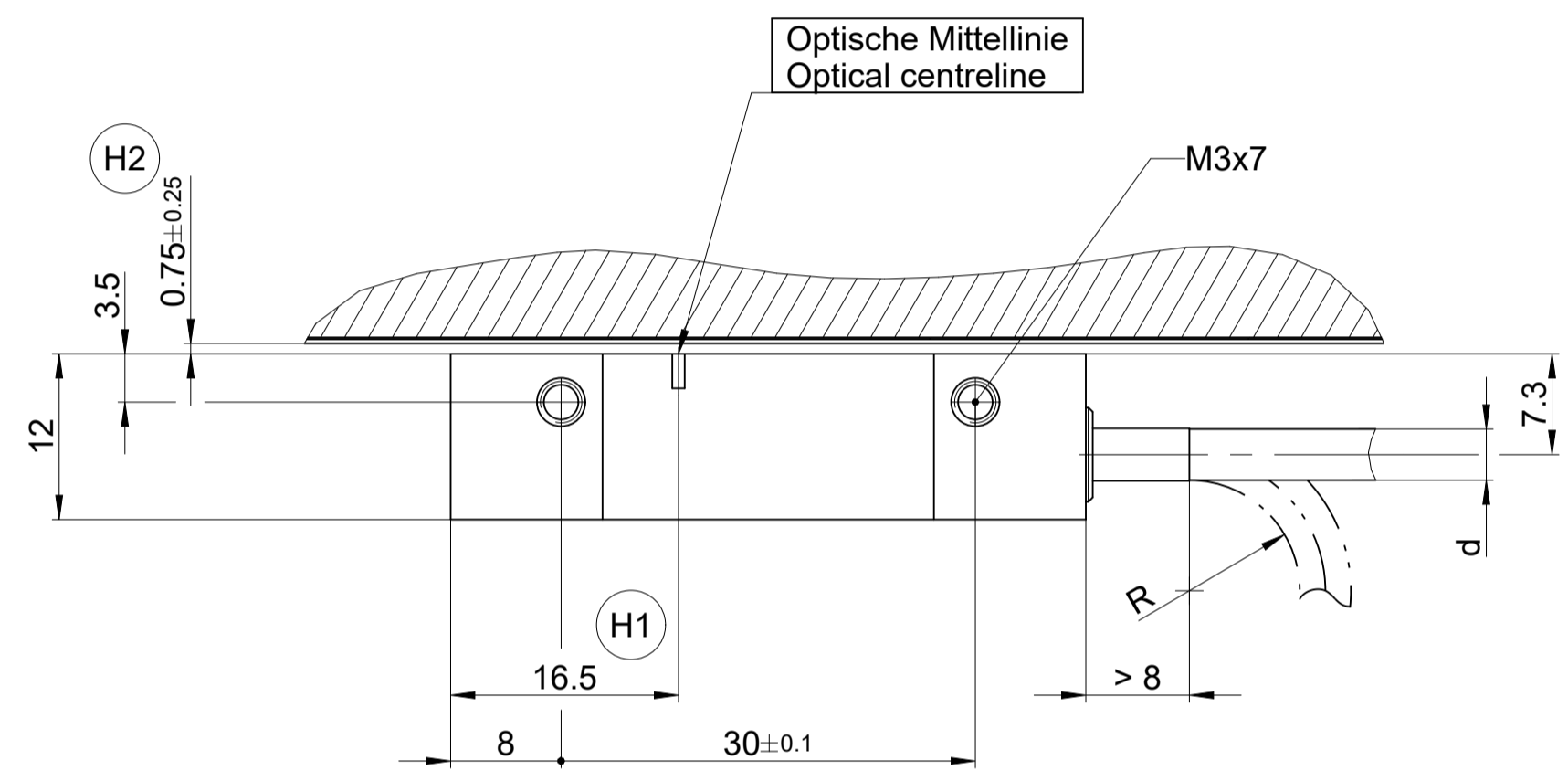
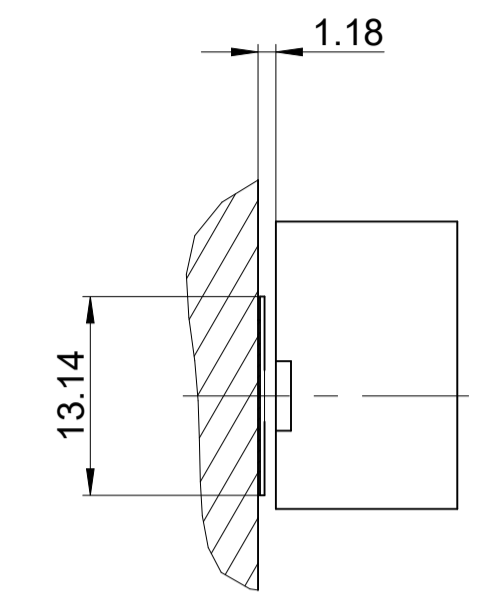


0.1	ML ≤ 1000
0.1/1000	ML > 1000
0.2	F



	d	R	R
		Feste Verlegung Rigid configuration	Wechselbiegung Frequent flexing
PUR	D 3.7 mm	> 8 mm	>= 40 mm
PUR	D 2.9 mm	> 6 mm	>= 30 mm

- I II III = Montagemöglichkeiten = Mounting options
- F = Maschinenführung = Machine guideway
- * = Anbaufehler plus dyn. Führungsfehler = Mounting failure plus dyn. failures of guideway
- S = Beginn der Messlänge ML = Beginning of measuring length ML
- L = Maßbandlänge = Scale length
- H1 = Optische Mittellinie = Optical centreline
- H2 = Montageabstand Abtastkopf zu Maßband = Mounting gap
- H3 = Bewegungsrichtung der Abtasteinheit für Ausgangssignale gemäß Schnittstellenbeschreibung = Direction of scanning unit motion for output signals in accordance with interface description

ID number: 1312213-01		Change No. C160627-05		Tolerances as per ISO 8015	
Phase: Serie		LIC 31x9		General Tolerances ISO 2768-1:2008-mH ±0.2	
Dimensions in mm		2:1 A1		Anschlussmaße / Mating Dimensions	
The reproduction, distribution and utilization of this document as well as the communication of its contents to others without express authorization is prohibited. Offenders will be held liable for the payment of damages. All rights reserved in the event of the grant of a patent, utility model or design. (ISO 18015)		Released 15.12.2023		Version Revision Sheet Page D1312213-03-A-01 1 of 1	
HEIDENHAIN DR. JOHANNES HEIDENHAIN GmbH 83301 Traunreut, Germany		Document number			