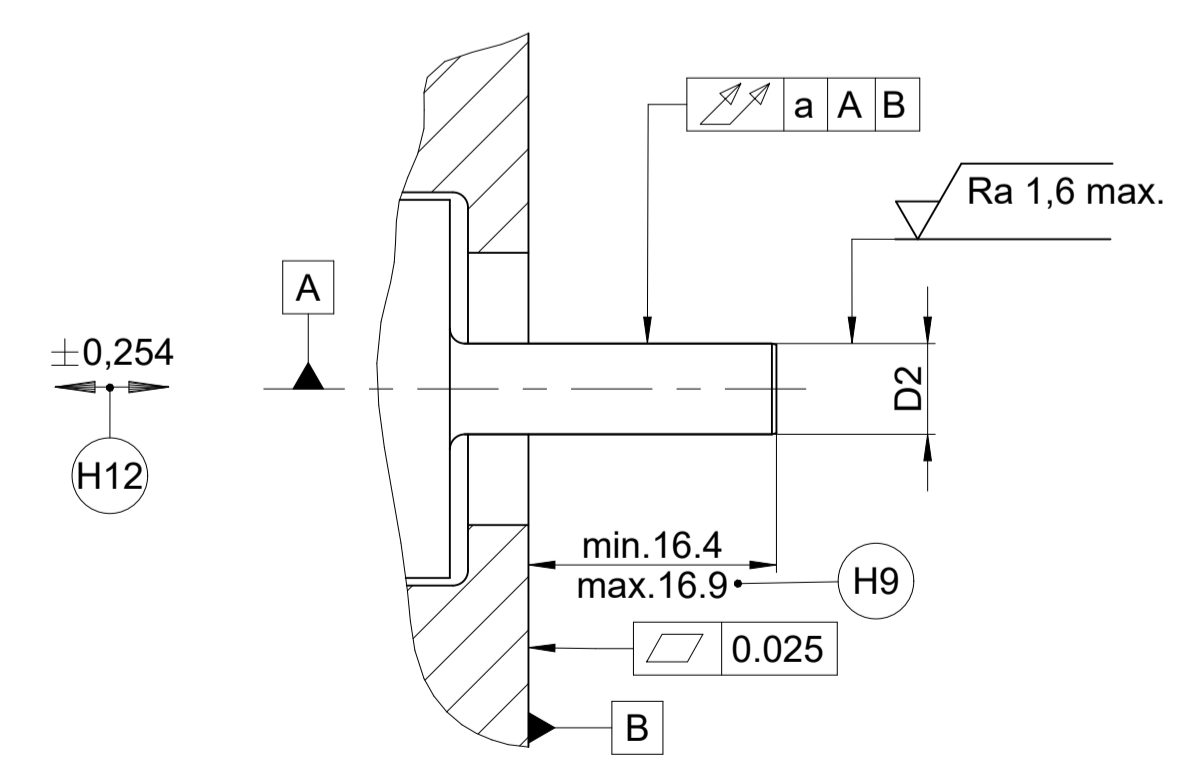
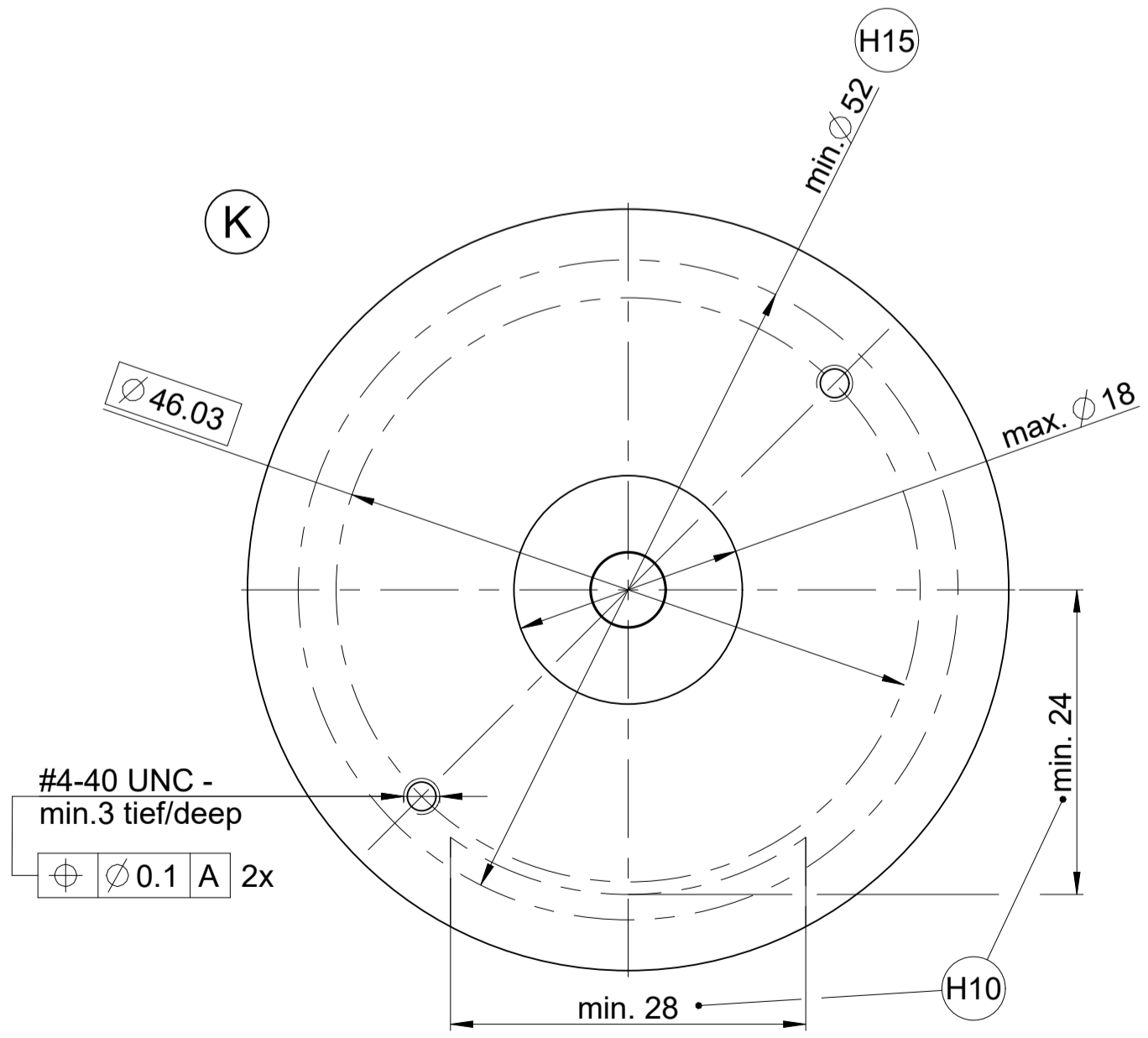
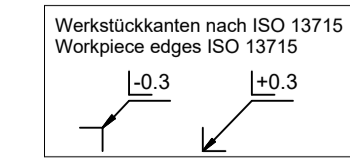


- A** = Lagerung Kundenwelle
Bearing of mating shaft
- K** = Kundenseitige Anschlussmaße
Required mating dimensions
- M** = Messpunkte Arbeitstemperatur
Measuring points for operating temperature
- H1** = Kappe FOKAA1= H4 / SH4
Cover FOKAA1= H4 / SH4
- H2** = Kappe FOKAA1=C4 / SC4
Cover FOKAA1= C4 / SC4
- H3** = Stiftheiste 15-pol. axial
15-pin male header (axial)
- H4** = Stiftheiste 15-pol. radial
15-pin male header (radial)
- H5** = Zulentlastung FOKAA1=SC4 / SH4
Strain relief FOKAA1= SC4 / SH4
- H6** = Bügel in Montagestellung
Slide lock in mounting position
- H7** = Befestigungsschraube #4.40 UNC x 6.35,
ID: 200507-A0 SW 3/32" Hex
Anzugsmoment 0.21 ± 0.02Nm
Mounting screw #4.40 UNC x 6.35,
ID: 200507-A0 SW 3/32" Hex
torque 0,21 ± 0,02Nm
- H8** = Gewindestift, Anzugsmoment 0,14 ± 0,01Nm
Setscrew, tightening torque: 0.14 ± 0.1 Nm
- H9** = Max. Maß für FOKAA1= C4 / SC4
Max. dimension for FOKAA1= C4 / SC4
- H10** = Erforderlicher Einbauraum
Required installation space
- H11** = Maßangabe für JH-Standardkabel
Dimension for HEIDENHAIN standard cable
- H12** = Maximal zulässige Bewegung zwischen Welle
und Stator inklusive thermischer Ausdehnung,
gesamter Wert dynamisch zulässig
Maximum permissible motion between shaft
and stator including thermal expansion,
entire value dynamically permissible
- H13** = Referenzmarken-Lage ± 10°
Referenze mark position ± 10°
- H14** = Drehrichtung der Welle für Ausgangssignale
gemäß Schnittstellen-Beschreibung
Direction of shaft rotation for output signals
as per interface description
- H15** = Flanschauflage - ganzflächige Auflage im Anschraubbereich beachten!
Flange surface: ensure full-surface contact in the screw-on area!



STRIA1	ANSIA1	WERKA3	a
500	> 100	ME	0.05mm
512	≤ 5000		
625			
1000	> 5000	G3	0.03mm
1024	≤ 10000		
1250			



NAME1	FOKAA1	NADUA1	WELLA1	D1 ¹⁸ 01E	D2 ⁰ 013E	Gewindestift-Innenprofil Setscrew inside profile
R35i	C4/ H4/ SC4/ SH4					SW 0.89 Hex
						.048" Bristol 4-Spline

HEIDENHAIN
DR. JOHANNES HEIDENHAIN GmbH
83301 Traunreut, Germany

Original drawing
Scale: 2:1
Format: A1

R35i Gen.2 Renco FOKAA1= C4/H4/SC4/SH4
R35i Gen.2
Anschlussmaße / Mating Dimensions

Released: 02.05.2023
Version/Revision/Sheet/Page: D1276182-02-A-01 / 1 of 1