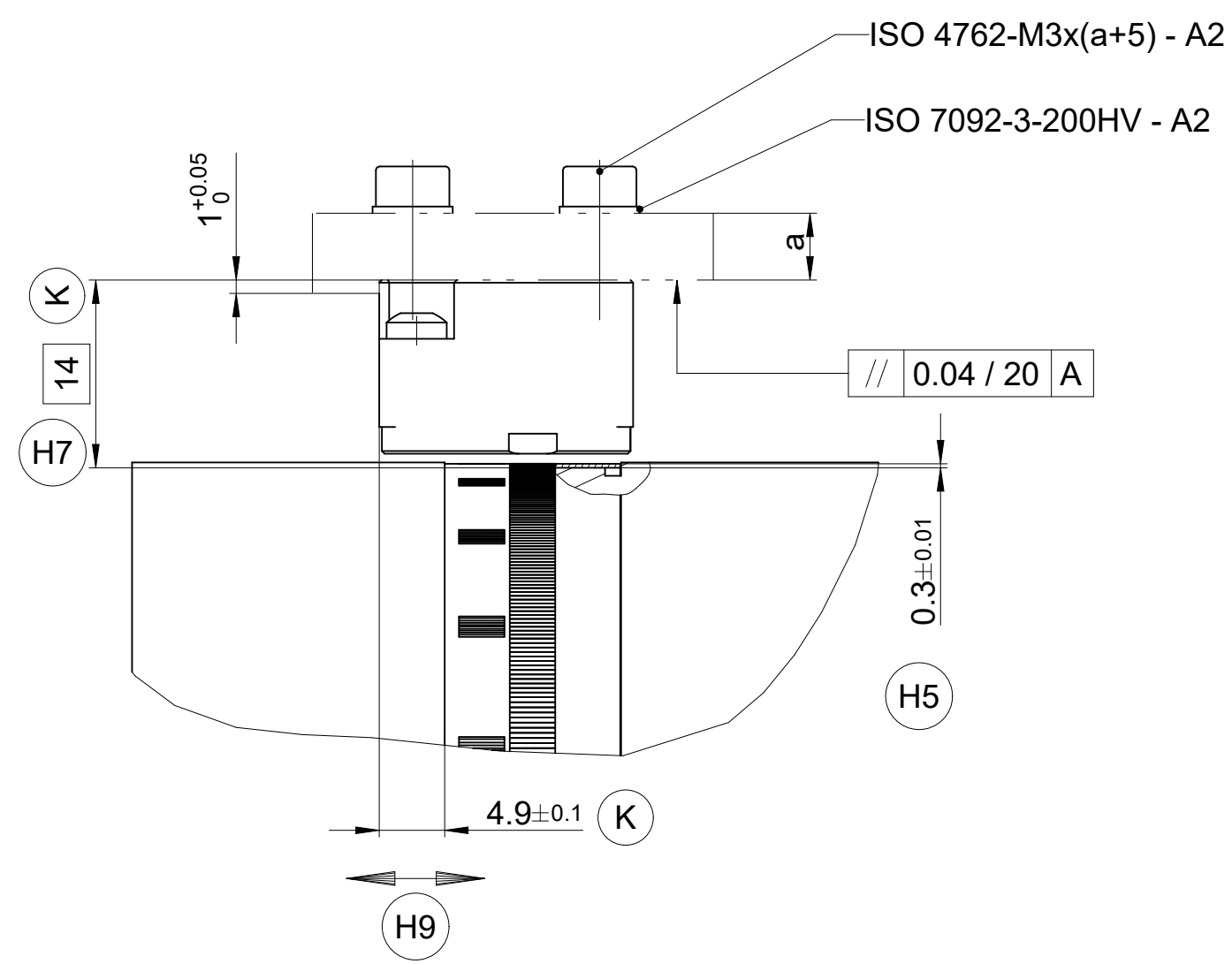
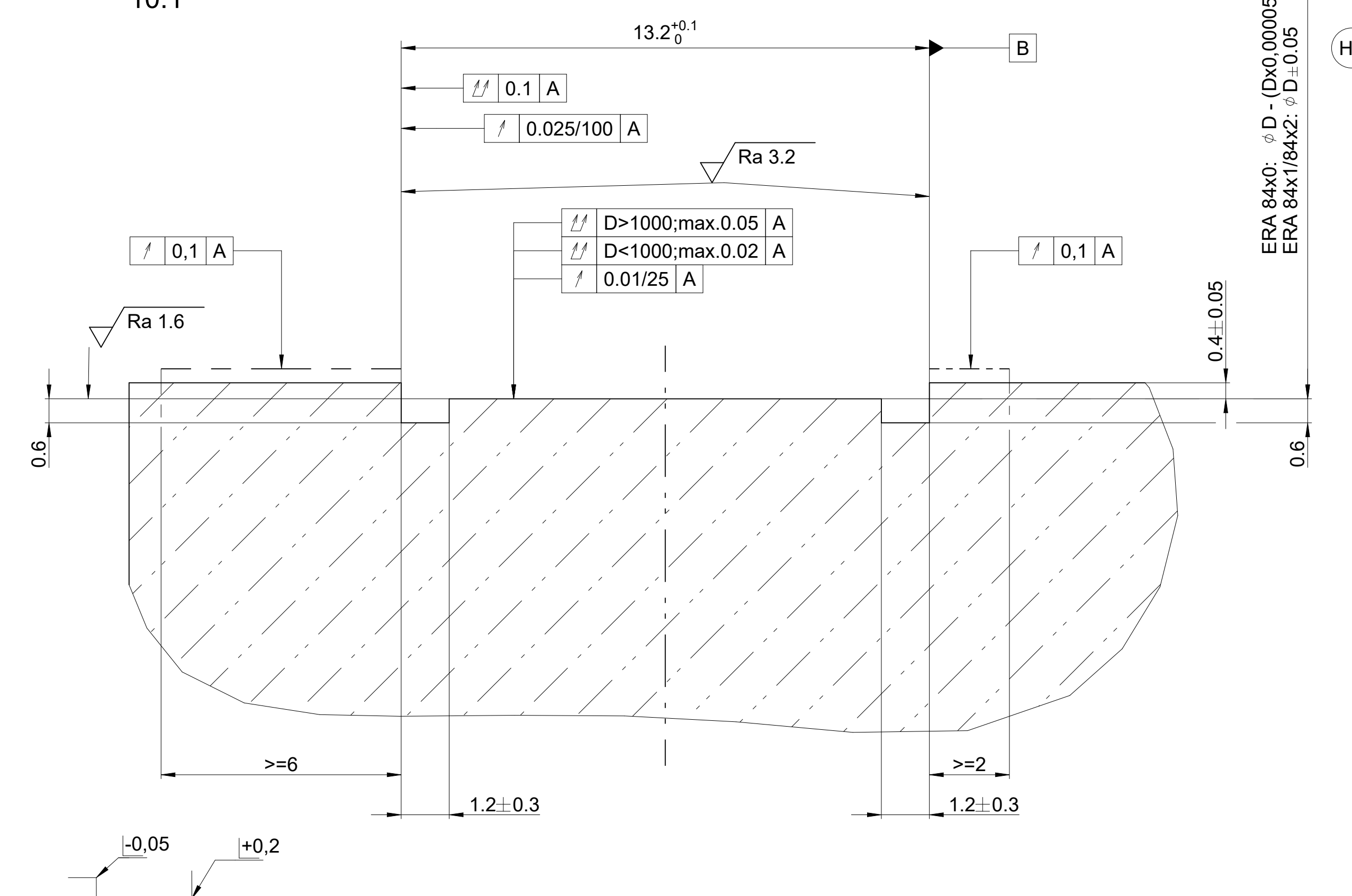


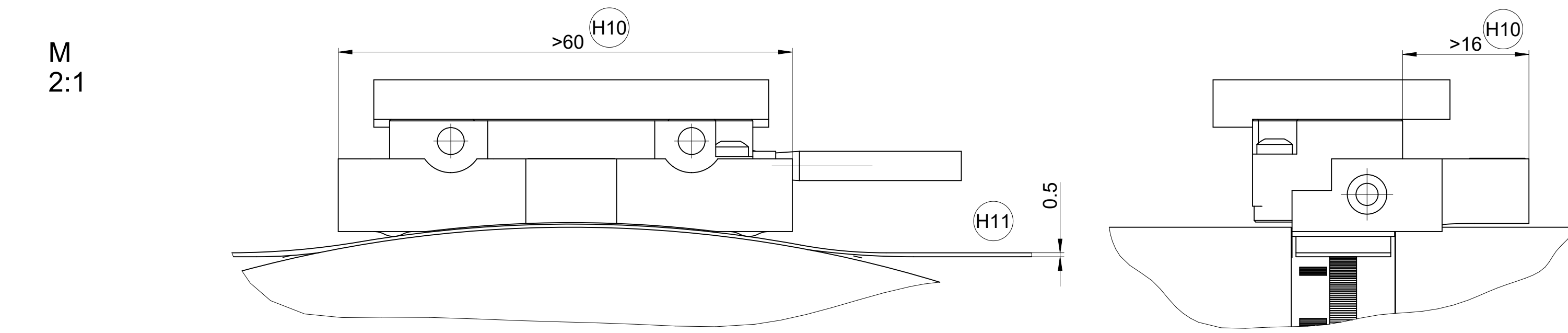
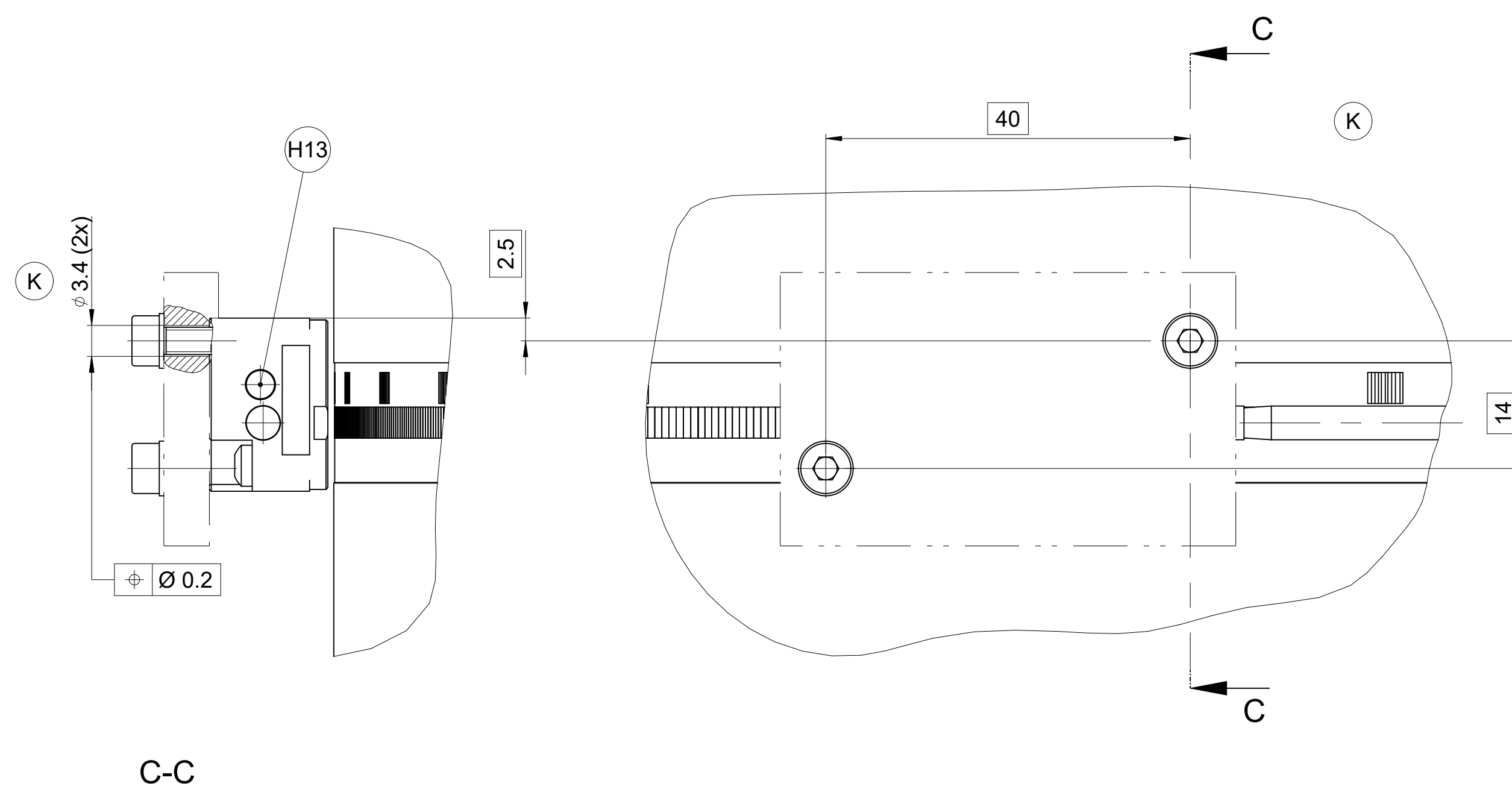
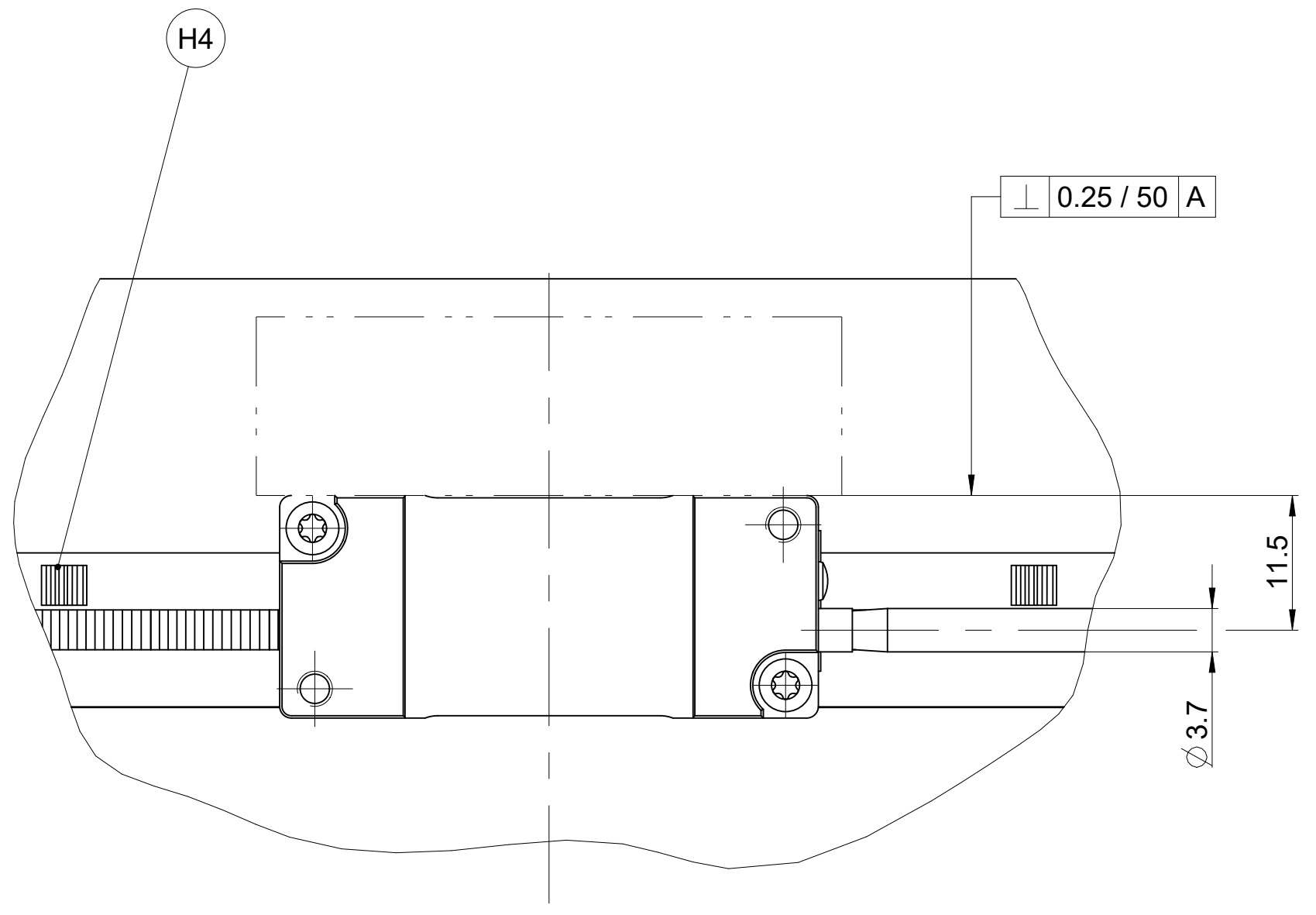
M 2:1



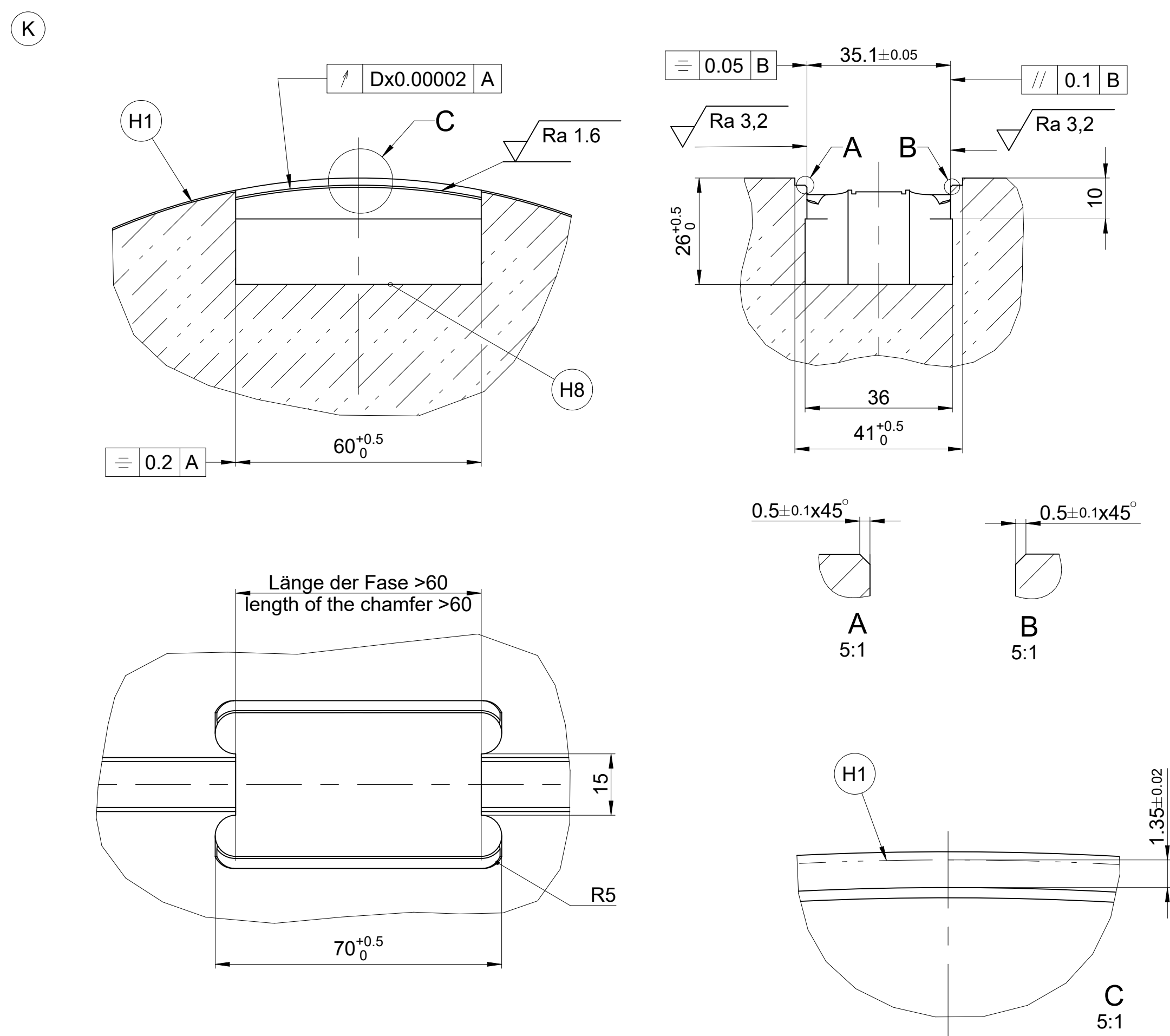
M 10:1



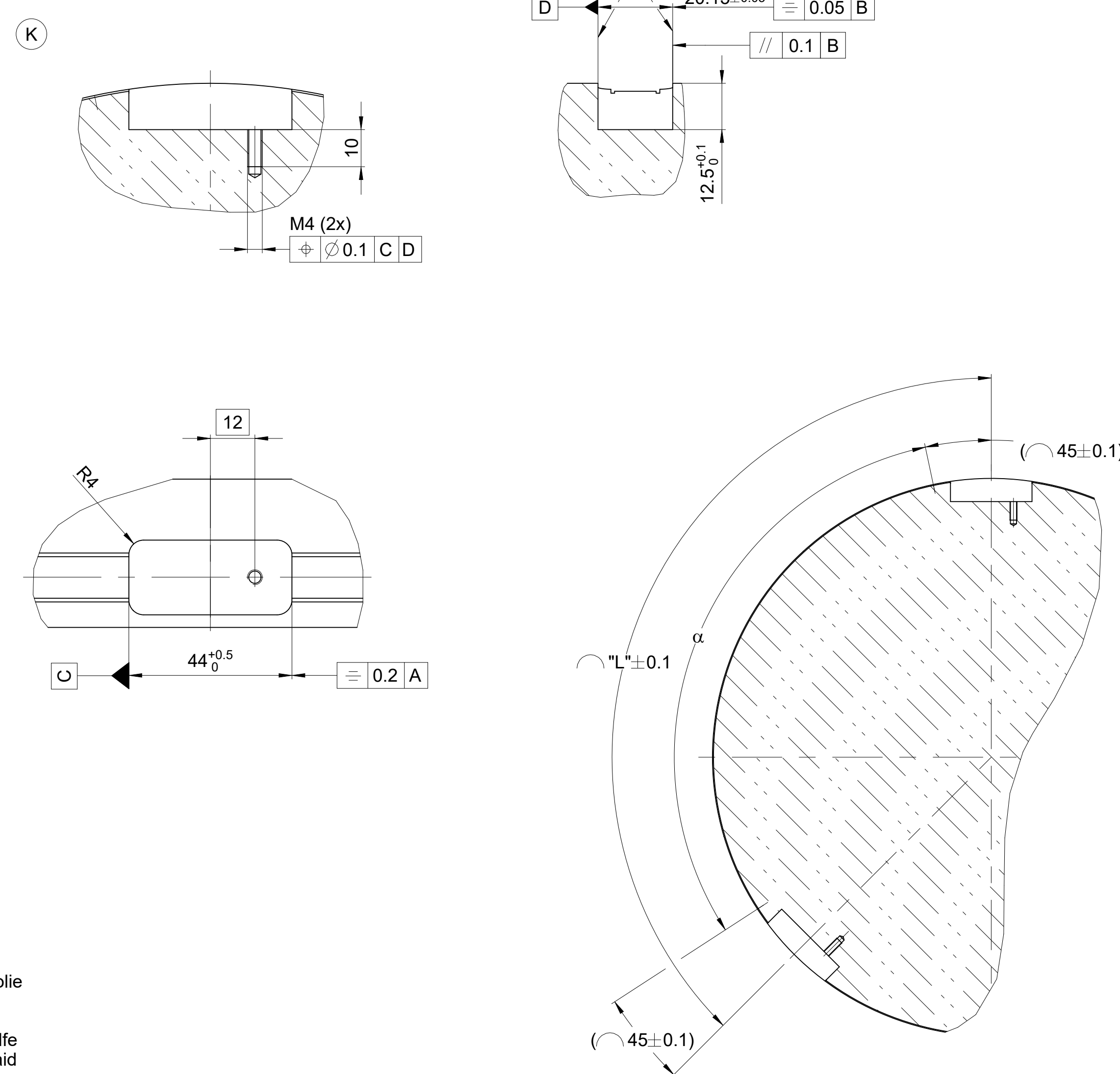
ERA 84x0: Ø D - (Dx0.00005)
ERA 84x1/84x2: Ø D - 0.05



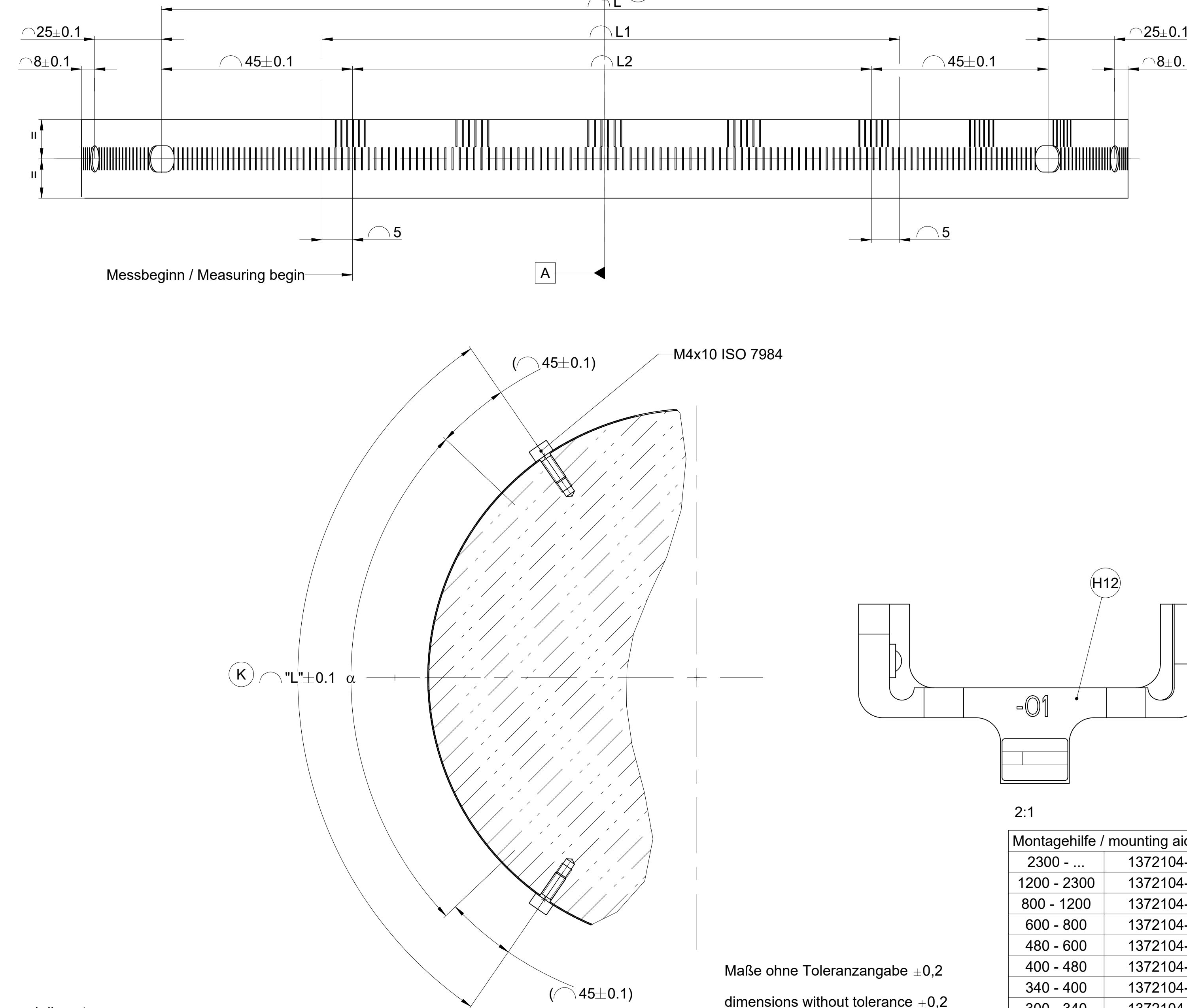
ERA 84x0 (Vollkreis / Full circle)



ERA 84x1 (Segment)



ERA 84x2 (Segment)



- I II = Montagemöglichkeiten / Mounting options
- A = Lagerung / Bearing
- K = Kundenseitige Anschlussmaße / Required mating dimensions
- H1 = Maßband Nutgrund Ø D / Scale tape slot floor Ø D
- H2 = Biegeradius R des Kabels / Kabel fest verlegt > 8mm / Wechselsbiegung > 40mm / Bend radius R of cable / Rigid configuration > 8mm / Frequent flexing > 40mm
- H3 = Positive Drehrichtung / Positive direction of rotation
- H4 = Referenzmarke / Reference mark

- H5 = Maßbanddicke / Scale-tape thickness
- H6 = Abstand vom Maßband-Nutgrund bis Befestigungsgewinde / Distance from scale tape slot floor to threaded mounting hole
- H7 = Abstand von Maßband-Nutgrund bis rückseitige Montagefläche Abtastkopf / Distance from scale-tape slot floor to rear mounting surface of scanning head
- H8 = Grundfläche der Tasche ferromagnetisch - zur Fixierung des Spannschlösses / Ground area of the pocket ferromagnetic - to fix the tensioning cleat
- H9 = Zul. Axialbewegung (Maßband relativ zum Abtastkopf) ≤ ±0.5mm / permissible axial movement (tape to scanning head) ≤ ±0.5mm
- H10 = Raum für Montagehilfe / Space for assembling aid

- H11 = Abstandsfolie / spacer foil
- H12 = Montagehilfe / mounting aid
- H13 = Funktionsanzeige / functional display

$$D = \frac{n \times 0,04 \times 1,0001^*}{\pi} - 0,3$$

$$\alpha = \frac{n \times 0,04 \times 1,0001^*}{(D + 0,3) \times \pi} \times 360^\circ$$

$$L2 = n \times 0,04 \times 1,0001^*$$

- L = Position der beiden Endstück-Aussparungen bzw. Befestigungsgewinde / Position of the two end-piece openings respectively threaded mounting hole
- L1 = Verfahrweg / Traverse path
- L2 = Messbereich im Kreisbogen / Measuring range in circular arc
- L = Länge des Kreisbogens in der Neutralen Faser, Maßbanddicke beachten / Length of circular arc in stress-free zone, observe scale-tape thickness

- n = Strichzahl / Line counts
- D = Nutgrunddurchmesser / Slotground diameter
- α = Messbereich in Grad (Segmenwinkel) / Measuring range in degrees (segment angle)
- = 3.14159...
- * = individuelle Anpassung der Maßbandspannung ab D≥3m nötig. / individual modification of the tape tensioning necessary starting from D≥3m.

Montagehilfe / mounting aid		ID number
2300 - ...	1372104-08	1374755-01
1200 - 2300	1372104-07	030914-00
800 - 1200	1372104-06	ISO 8015
600 - 800	1372104-05	General Tolerances
480 - 600	1372104-04	ISO 2768-MS
400 - 480	1372104-03	Form ISO 1101
340 - 400	1372104-02	Surface ISO 13715
300 - 340	1372104-01	Dimension ISO 1101