

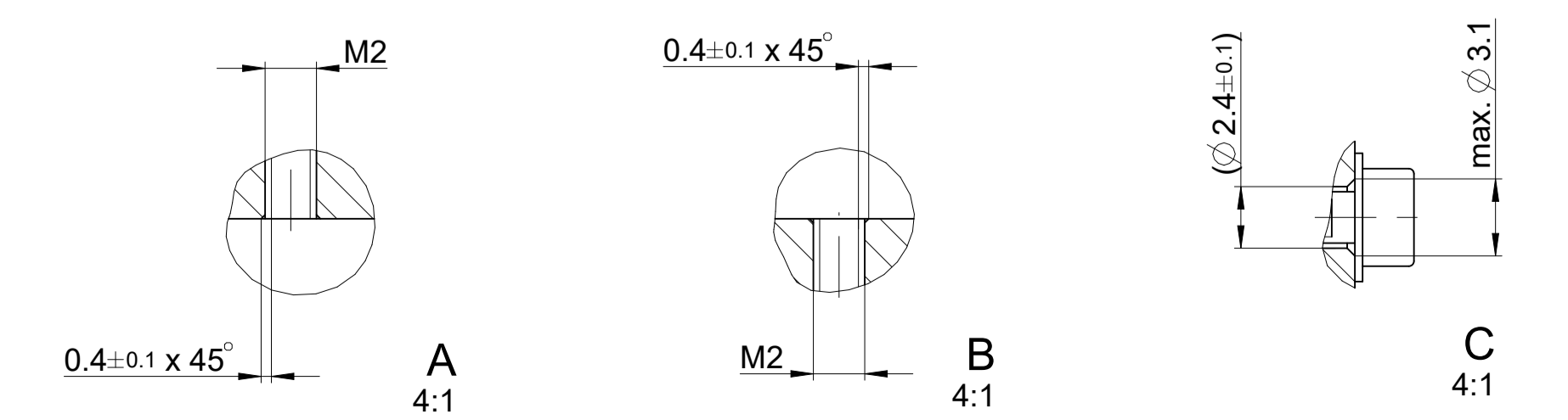
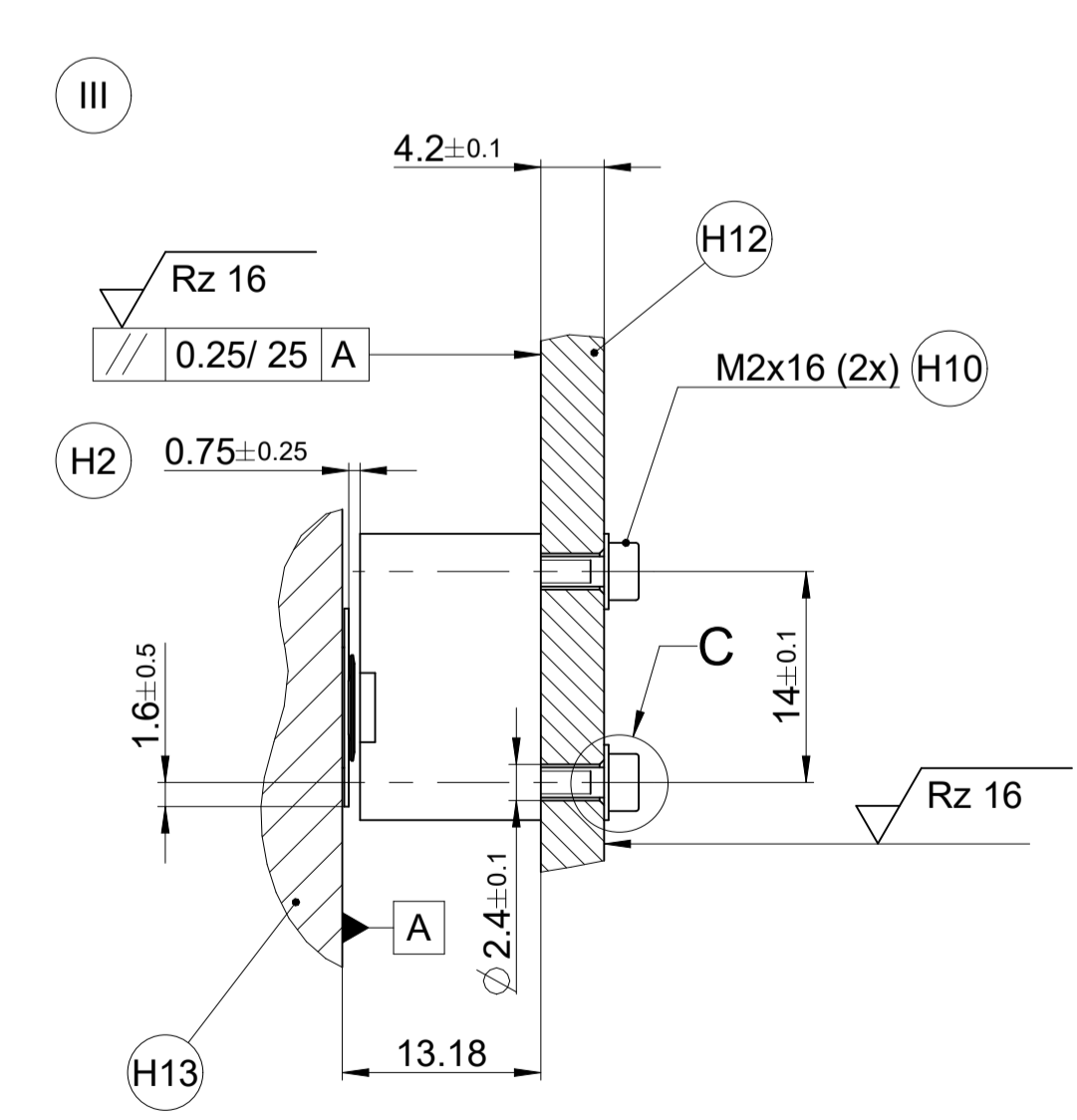
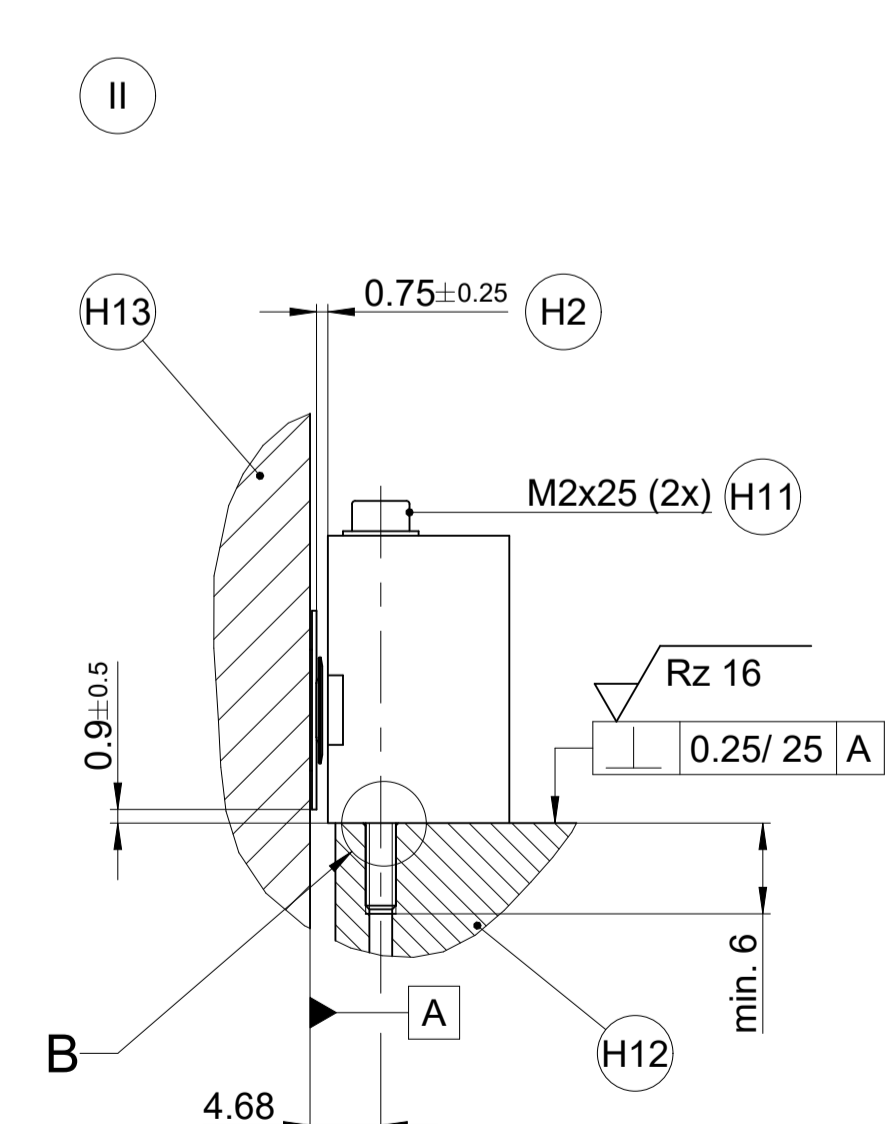
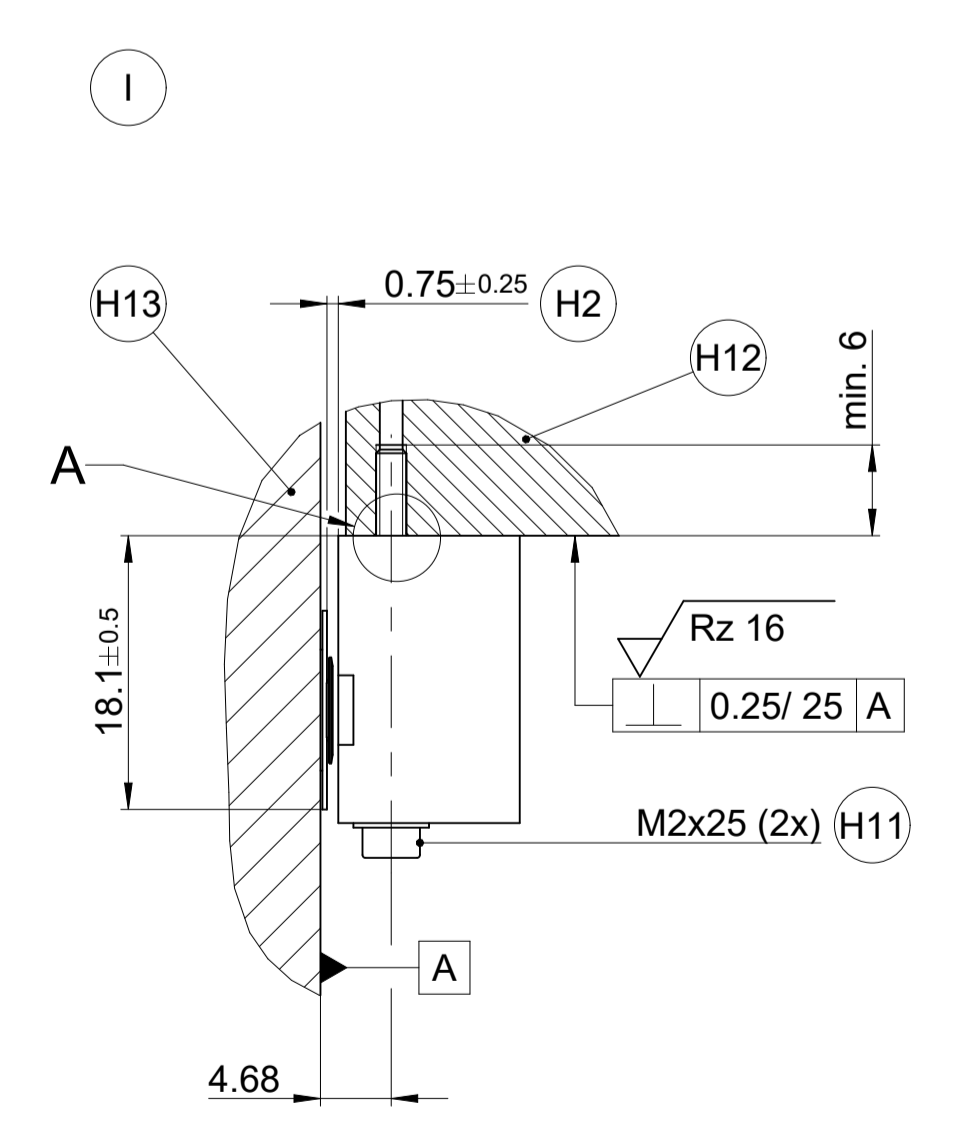
Für Funktionale Sicherheit und Mechanischen Fehlerrückmeldung obligatorisch  
For Functional Safety and Mechanical Fault Exclusion obligatory

	Befestigungswinkel Abtastkopf Mounting bracket scanning head	Montagefläche Maßverkörperung Mounting surface measuring standard
Material Material	Stahl Steel	Aluminium Aluminium
Zugfestigkeit R <sub>m</sub> Tensile Strength R <sub>m</sub>	≥ 600 N/mm <sup>2</sup>	≥ 220 N/mm <sup>2</sup>
Scherfestigkeit T <sub>B</sub> Shearing strength T <sub>B</sub>	≥ 390 N/mm <sup>2</sup>	≥ 130 N/mm <sup>2</sup>
Elastizitätsmodul E Young's modulus E	20°C: 200000 ... 215000 N/mm <sup>2</sup>	20°C: 70000 ... 75000 N/mm <sup>2</sup>
Wärmeausdehnungskoeffizient Coefficient of thermal expansion	10 ... 17 x 10 <sup>-6</sup> 1/K	≤ 25 x 10 <sup>-6</sup> 1/K

Schraubverbindungen müssen der Reibungszahl Klasse B nach VDI 2230 entsprechen  
Screw connection has to fulfill friction coefficient class B according to VDI 2230

Bezeichnung Schraube + Scheibe Screw + washer	Anzugsmoment Tightening torque
H10 M2x16 ISO 4762 - 8.8 + ISO 7089 - 2 - 200HV	27 ± 1.5 Ncm
H11 M2x25 ISO 4762 - 8.8 + ISO 7089 - 2 - 200HV	27 ± 1.5 Ncm

I II III	Montagemöglichkeiten	Mounting options
F	Maschinenführung	Machine guideway
*	Anbaufehler plus dynamische Führungsfehler	Mounting failure plus dynamic failures of guideway
ML	Messlänge	Measuring length
L	Maßbandlänge L = ML + 38	Scale length L = ML + 38
H1	Beginn der Messlänge	Beginning of measuring length
H2	Montageabstand Abtastkopf zu Maßband	Mounting gap
H3	Auf max. Signal einstellen	Adjust to max. signal
H4	Bewegungsrichtung der Abtasteinheit für Ausgangssignale gemäß Schnittstellenbeschreibung	Direction of scanning unit motion for output signals in accordance with interface description
H5	Montagehilfe	Mounting aid
H6	Abstand bei Montage symmetrisch einstellen	Adjust distance symmetrically during mounting
H7	Biegeradius R des Kabels: - Kabel fest verlegt ≥ 8 mm - Wechselbiegung ≥ 40 mm	Bend radius R of cable: - Rigid configuration ≥ 8 mm - Frequent flexing ≥ 40 mm
H8	Kabelabstützung	Cable support
H9	Sicherungsschraube, Innensechskant ISO 10664 - 10 stoffschlüssige Schraubenlosdrehung erforderlich Anzugsmoment = 40 ± 2.4 Ncm	Safety Screw, Hexalobular internal driving feature ISO 10664 - 10 Material bonding anti-rotation lock necessary Tightening torque = 40 ± 2.4 Ncm
H10	M2x16 (siehe Tabelle)	M2x16 (see table)
H11	M2x25 (siehe Tabelle)	M2x 25 (see table)
H12	Befestigungswinkel Abtastkopf (siehe Tabelle)	Mounting bracket scanning head (see table)
H13	Montagefläche Maßverkörperung (siehe Tabelle)	Mounting surface measuring standard (see table)
H14	Siehe Produktinformation	See product information



ID number: 1249296-01  
Change No. C125263-14  
Phase: Serie  
Tolerances as per ISO 8015  
General Tolerances ISO 2768-1:2008-mH 56mm:±0.2

Original drawing Scale Format  
2:1 A1

Dimensions in mm

LIC 4119 FS  
LIC 4119 FS  
Anschlussmaße / Mating Dimensions

The reproduction, distribution and utilization of this document as well as the communication of its contents to others without express authorization is prohibited. Offenders will be held liable for the payment of damages. All rights reserved in the event of the grant of a patent, utility model or design. (ISO 15015)

Released 20.06.2022  
Version / Revision / Sheet / Page  
D1249296-02 - A-01 1 of 1  
Document number

HEIDENHAIN  
DR. JOHANNES HEIDENHAIN GmbH  
83301 Traunreut, Germany