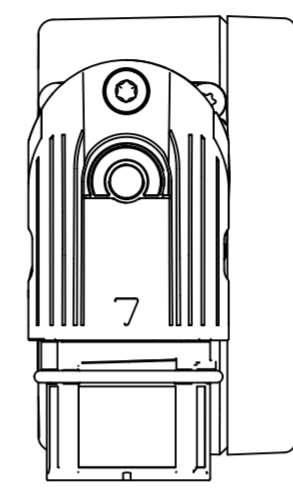
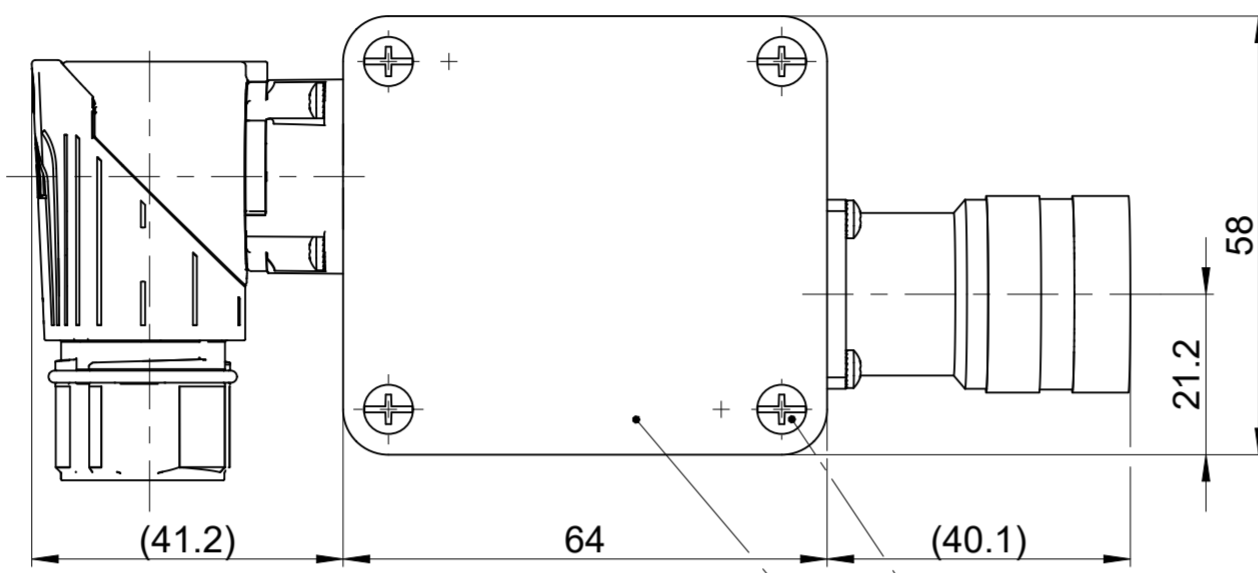
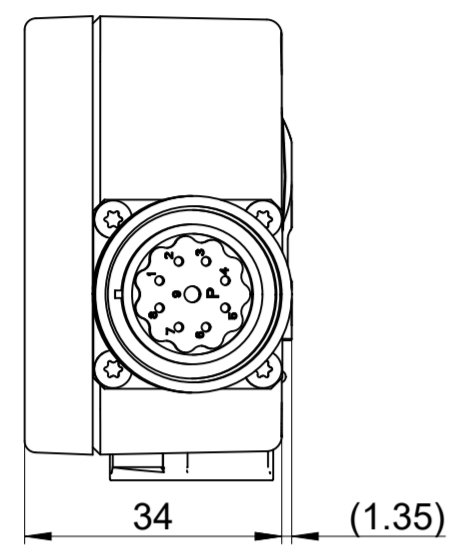
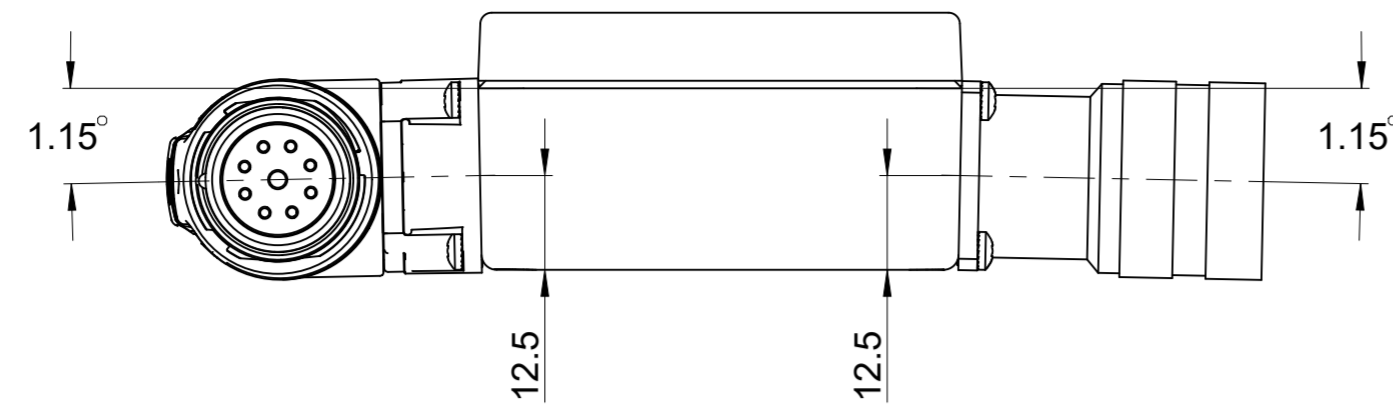
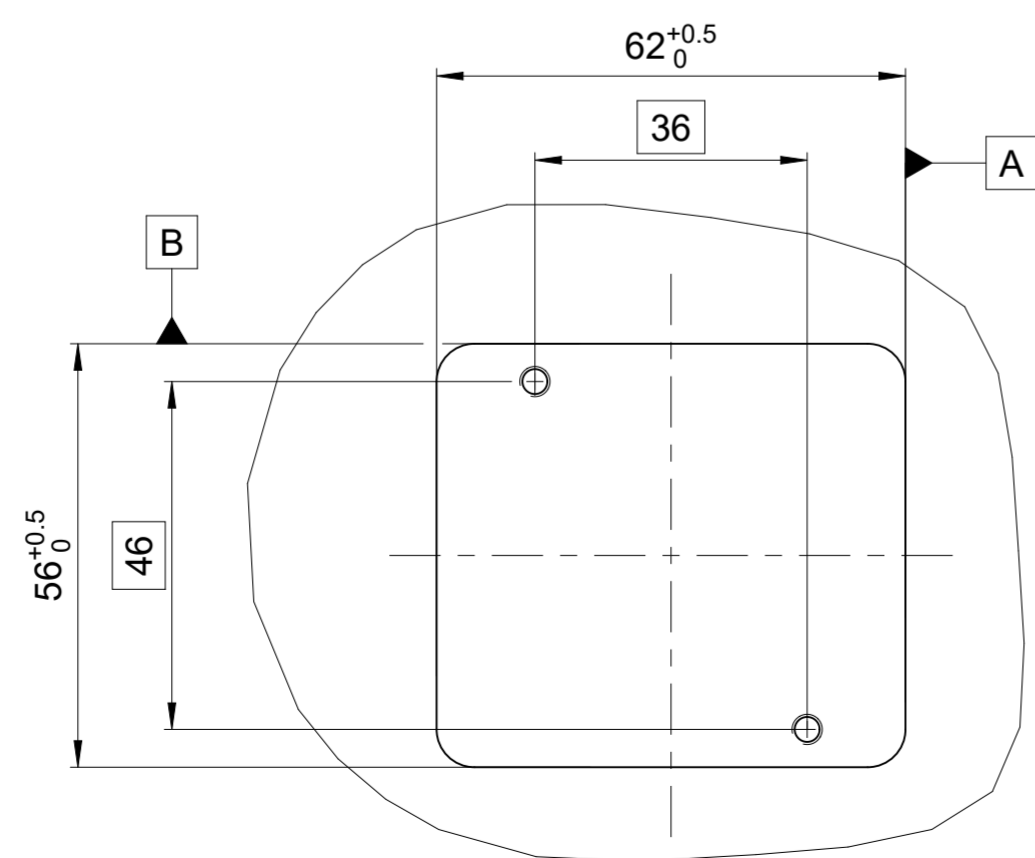
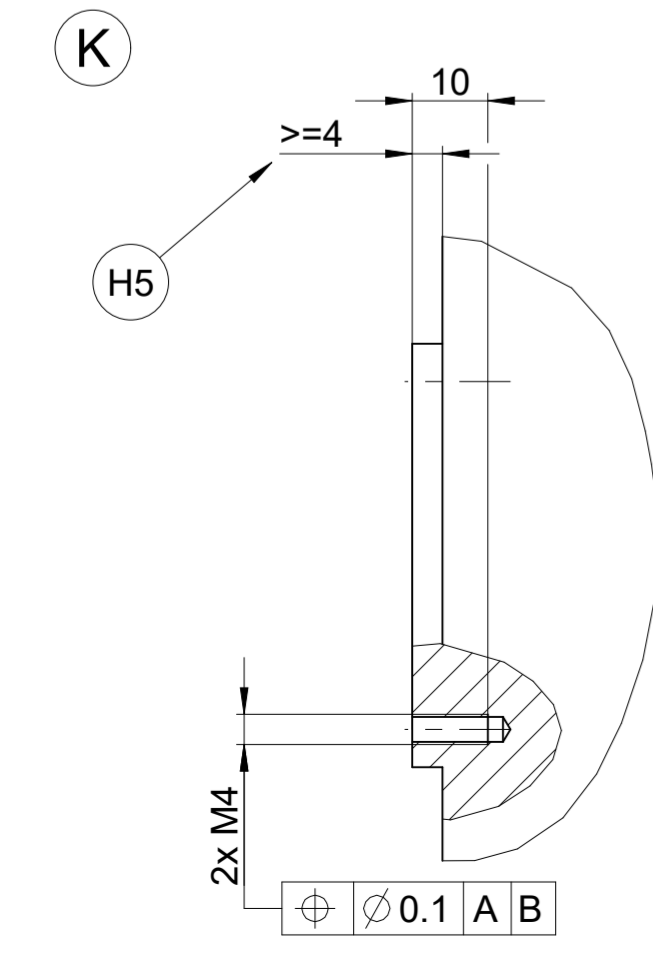
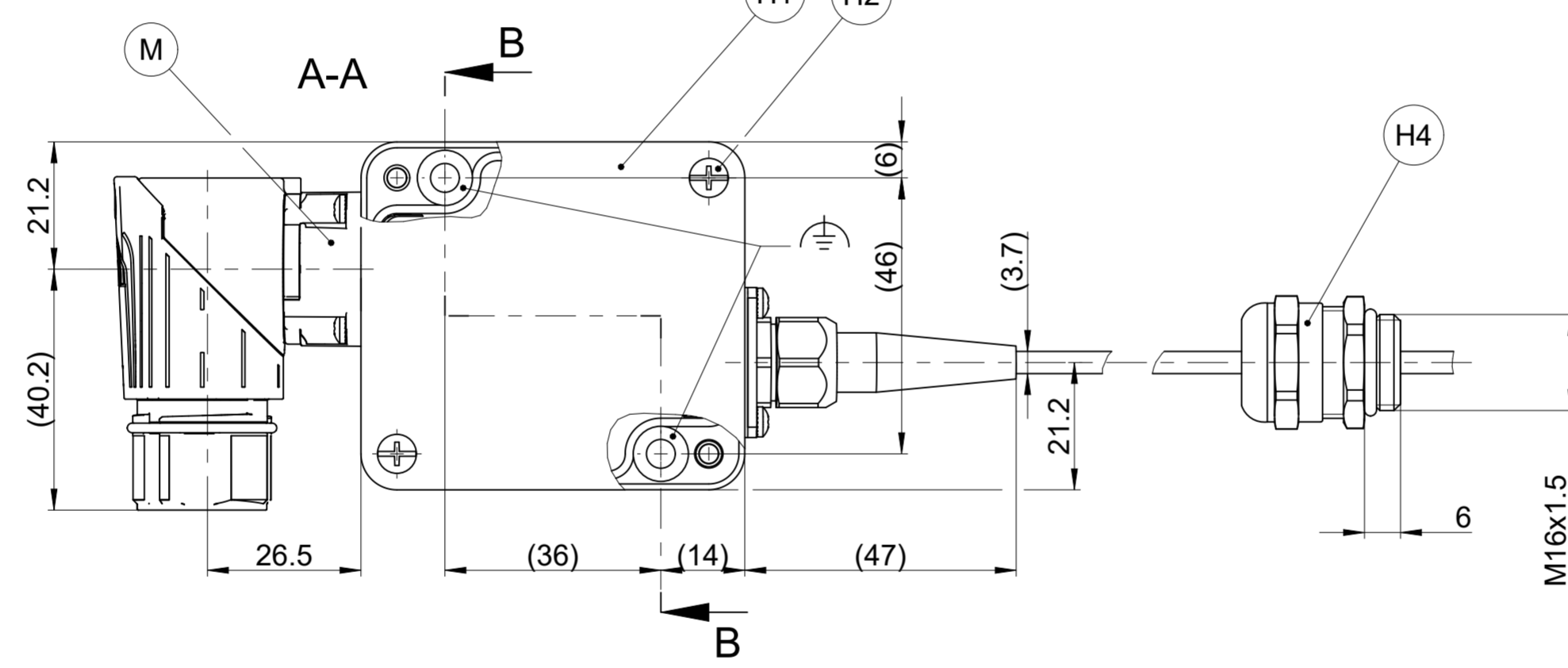
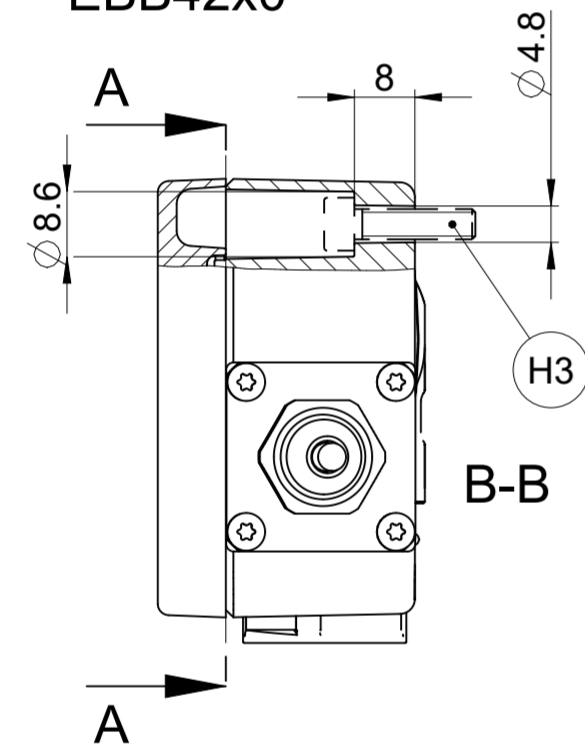


EBB41x0



EBB42x0



- (K) = Kundenseitige Anschlussmaße mit Kabeldurchführung  
Required mating dimensions
- (M) = Messpunkt Arbeitstemperatur / Vibration  
Operating temperature / vibration measuring point
- (H1) = Abnehmbarer Gehäusedeckel  
Removeable housing cover
- (H2) = 4x Schraube Gehäusedeckel - Anzugsmoment  $1,8 \pm 0,11$  Nm  
4x Screw housing cover - torque  $1,8 \pm 0,11$  Nm
- (H3) = 2x Schraube ISO 4762 - M4x16 - A2-70 (nicht im Lieferumfang)  
Elektrischer Kontakt zum Gewinde muss sichergestellt sein  
Anzugsmoment  $2,0 \pm 0,12$  Nm  
2x Screw ISO 4762 - M4x16 - A2-70 (not included)  
electrical contact with the thread must be ensured  
torque  $2,0 \pm 0,12$  Nm
- (H4) = Kabelverschraubung M16x1,5  
(Auslieferungszustand nicht auf Kabel geklemmt)  
Cable gland M16x1,5  
(delivered not clamped on cable)
- (H5) = Wegen überstehenden Flanschdosen nötig  
Needed because of overhanging connectors

(H3) -Anzugsmoment gültig für Werkstoffklasse Aluminium nach den allgemeinen mechanischen Hinweisen im aktuellen Drehgeberkatalog (D349529)  
(H3) -torque valid for material class aluminium according to general mechanical information in current brochures Rotary Encoders (ID D349529)

1ZB09	VZ	..	0.00	4110
3VB15	EZ	0D	0.50	4210
3VB15	RK	0D	0.50	4210
ANELA1	BELEA1	KABEA2	LAKAA1	TYPAA2

Original drawing		EBB4xx0		ID number:
Scale	Format	EBB4xx0		Change No. C001061-76
Dimensions in mm	1:1 A2	Anschlussmaße / Mating Dimensions		Phase: Serie
				Tolerierung nach DIN ISO 8015
				Allgemeintol. ISO 2768-mH $\pm 0,2$ mm General tol. ISO 2768-mH $\pm 0,2$ mm

The reproduction, distribution and utilization of this document as well as the communication of its contents to others without express authorization is prohibited. Offenders will be held liable for the payment of damages. All rights reserved in the event of the grant of a patent, utility model or design. (ISO 16016)

**HEIDENHAIN**  
DR. JOHANNES HEIDENHAIN GmbH  
83301 Traunreut, Germany

Version | Revision | Sheet | Page  
**D1231179-02 - A-01** | | 1 | 1  
Document number