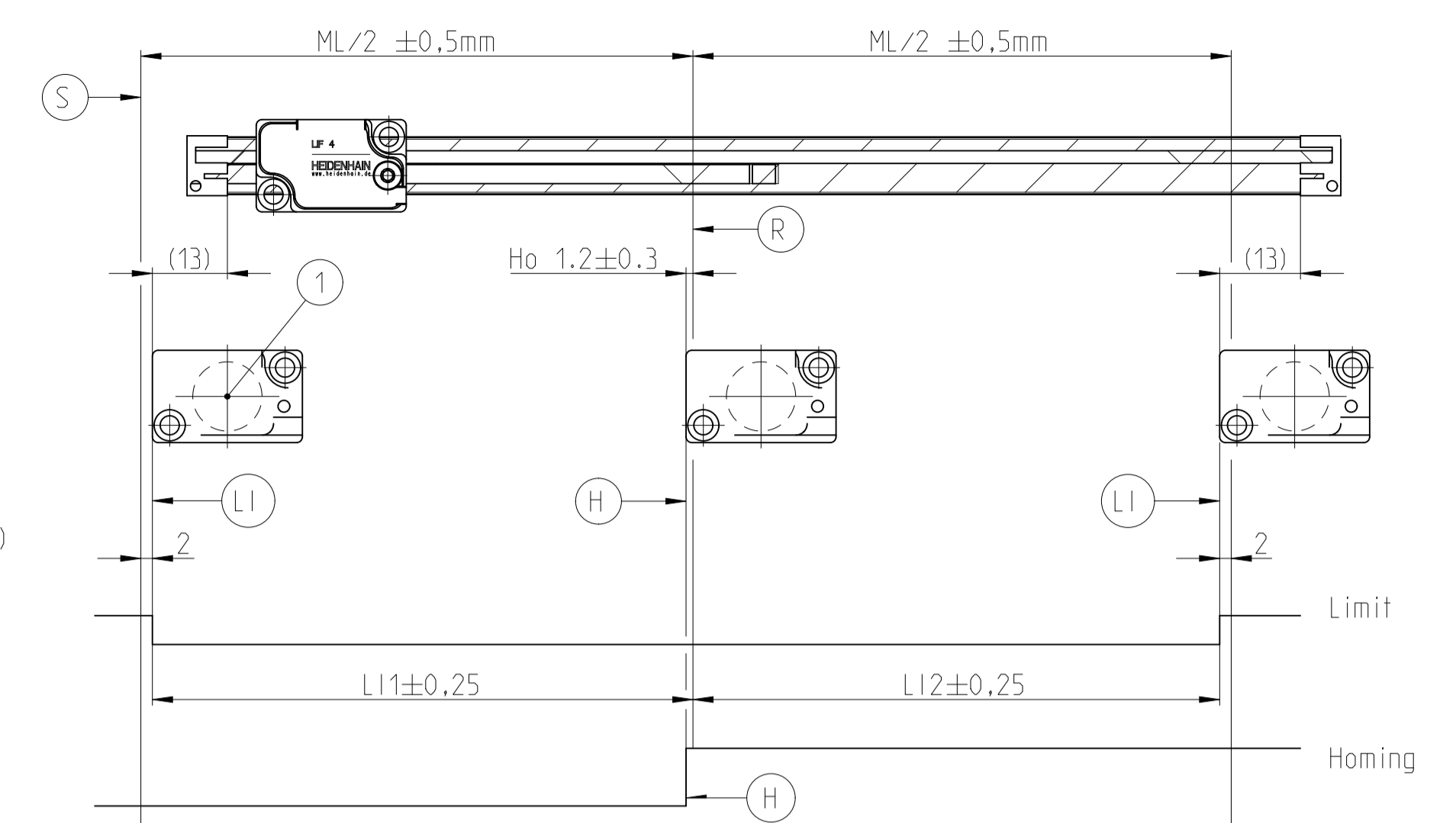
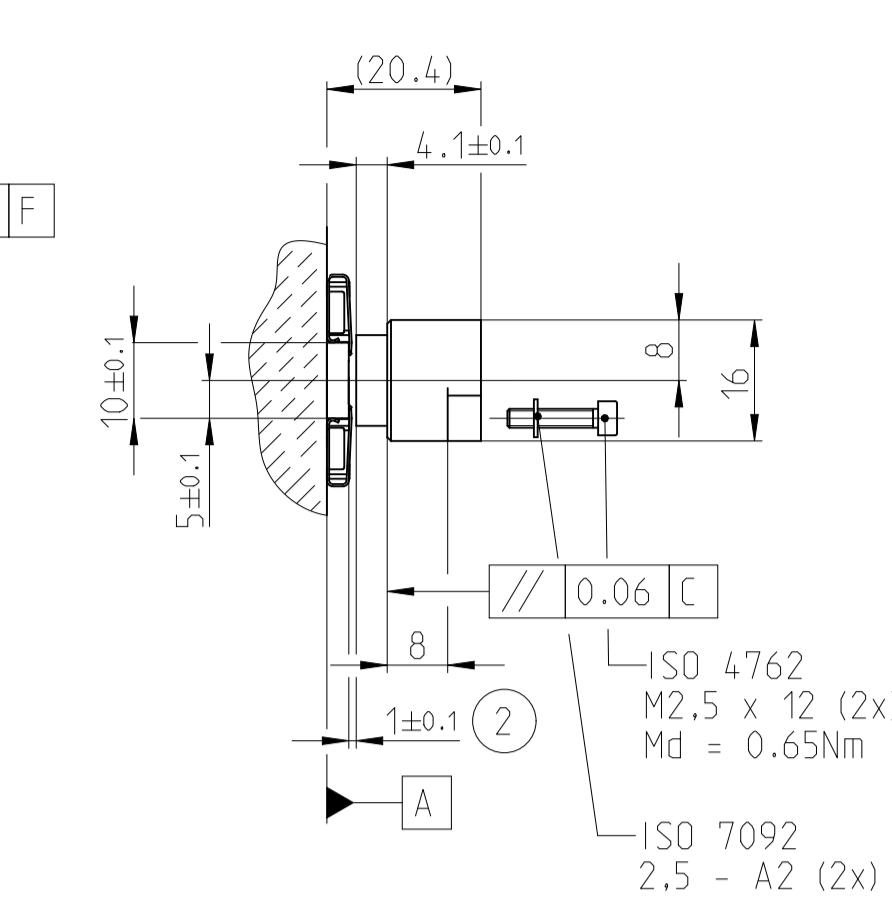
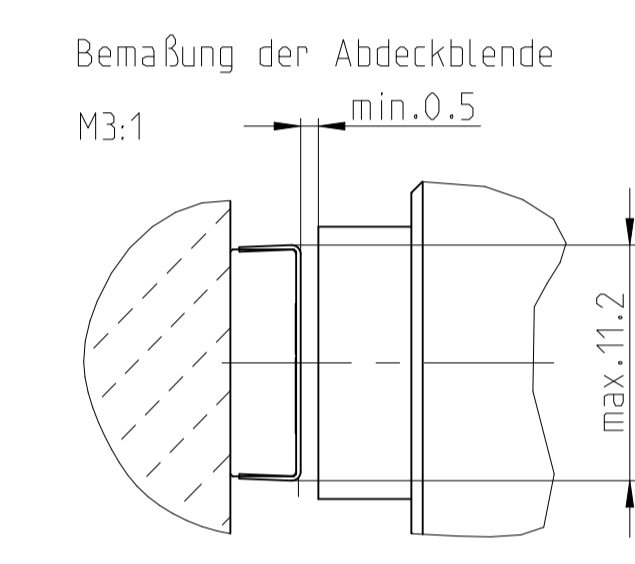
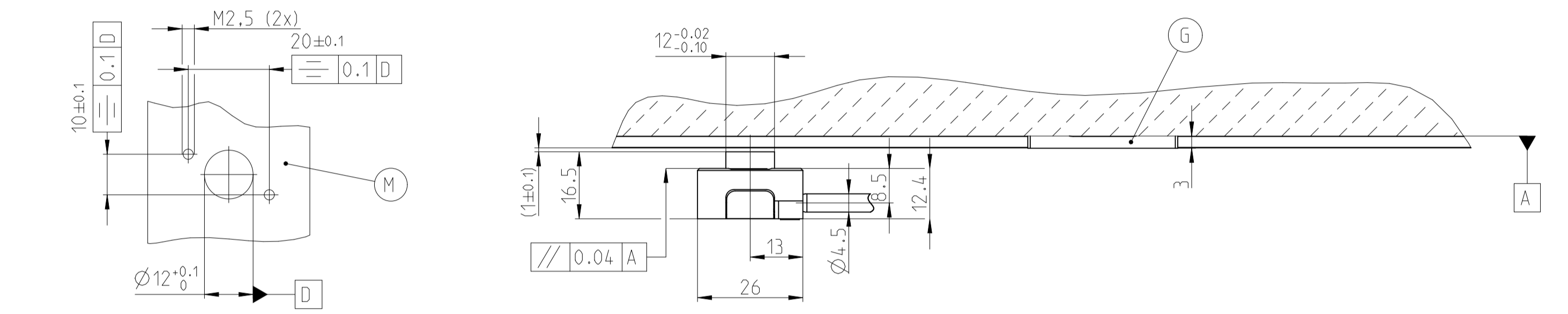


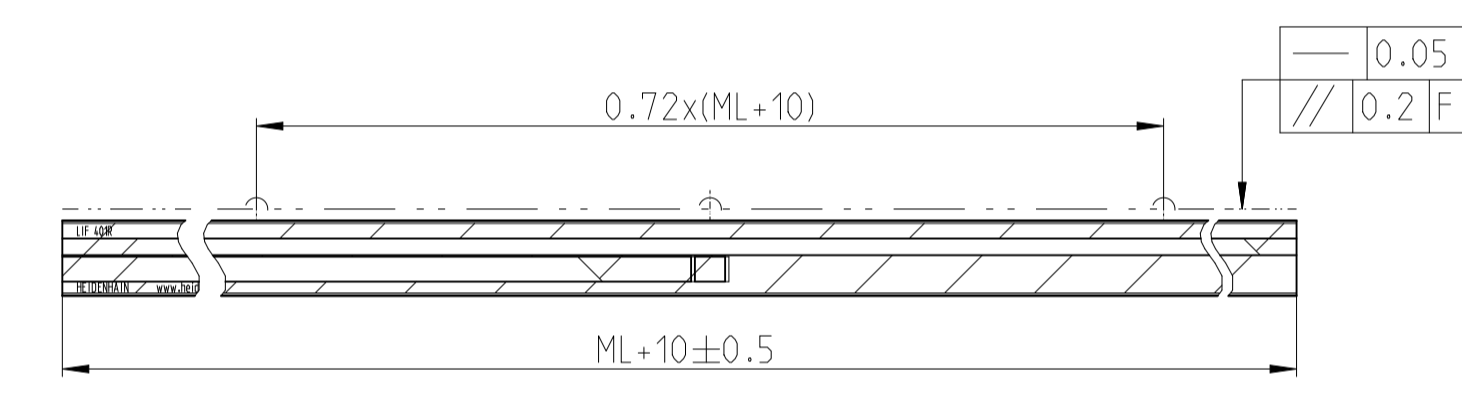
Darstellung ohne Limitblende und Fixpunkt



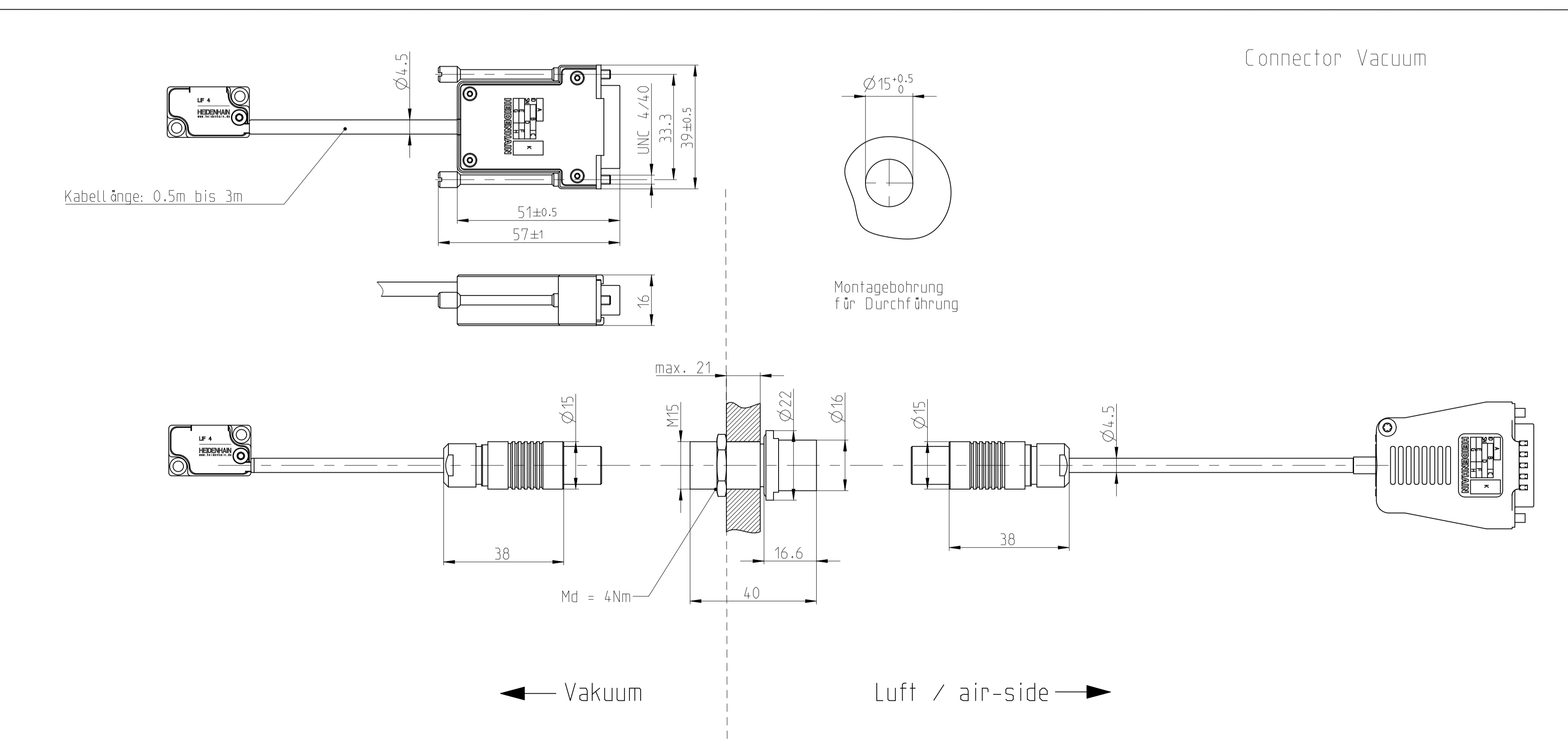
- L = Maßstablänge / scale length
- F = Maschinenführung / Machine guideway
- * = max. Änderung bei Betrieb / Max. change during operation
- ML = Messlänge / Measuring length
- (E) = Vakuikleber, Aushärtung bei Raumtemperatur in 24 h / Vacuum glue, curing at room temperature in 24 h
- (LI) = Limit, verstellbar / Limit-Label, adjustable
- (H) = Schalter für Homingspur / Switch for homing track
- Ho = Schalterpunkt Homing / Trigger point homing
- (R) = Referenzmarken-Lage / Reference mark position
- (S) = Beginn der Messlänge / Begin of measuring length
- (M) = Montagefläche für AK / Mounting surface for AK
- (G) = Fixpunktelement / Fixed-point
- (H) = Homing Schaltflanken / Homing edge
- (1) = optische Mitte / Optical center
- (2) = Abstand Abtastkopf / Maßstab / Mounting gap
- (3) = positive Messrichtung / positive direction
- (4) = Abstand mit Folie einstellen / adjusted by means of a space shim
- (5) = zusätzliches Spannpratzenpaar abhängig von ML / additional fixing clamp pair depending on ML



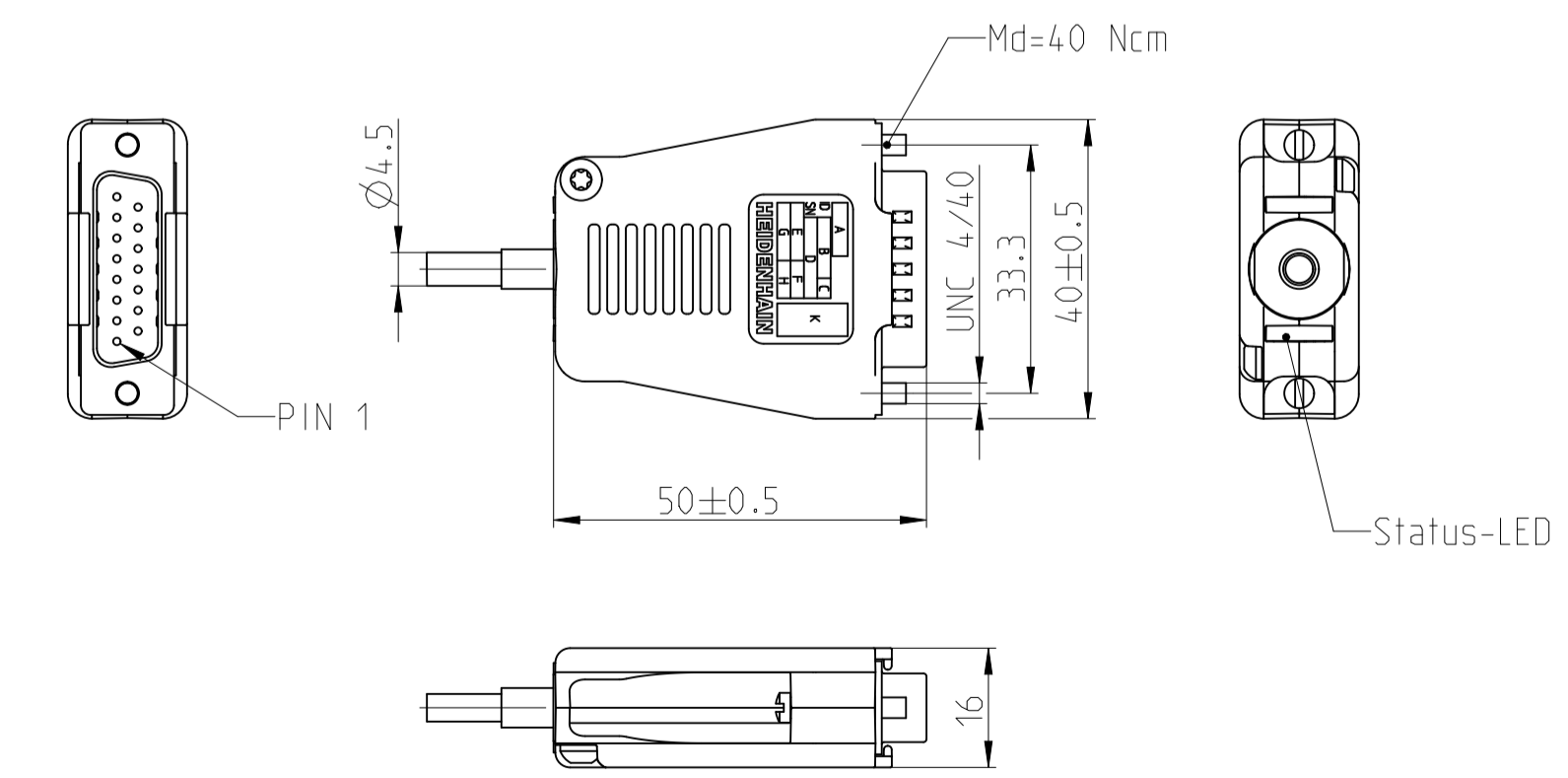
Position Anschlagstifte
Position stop pins



Connector Vacuum



Connector Vacuum / Standard



Original drawing		LIF 4x1R / 4x1V		ID number:	C177158-18
Scale		Format		Change No.	Serie
Dimensions in mm		1:1 A1		Phase:	
Anschlussmaße / Mating Dimensions				Tolerances as per ISO 8015	
The reproduction, distribution and utilization of this document as well as the communication of its contents to others without express authorization is prohibited. Offenders will be held liable for the payment of damages. All rights reserved in the event of the grant of a patent, utility model or design. (ISO 18015)				General Tolerances ISO 2768-1/2003-mH 16mm±0.2	
Released		Version / Revision / Sheet		Page	
08.09.2025		D1229169-02 - B-01		1 of 1	
HEIDENHAIN DR. JOHANNES HEIDENHAIN GmbH 83301 Traunreut, Germany				Document number	