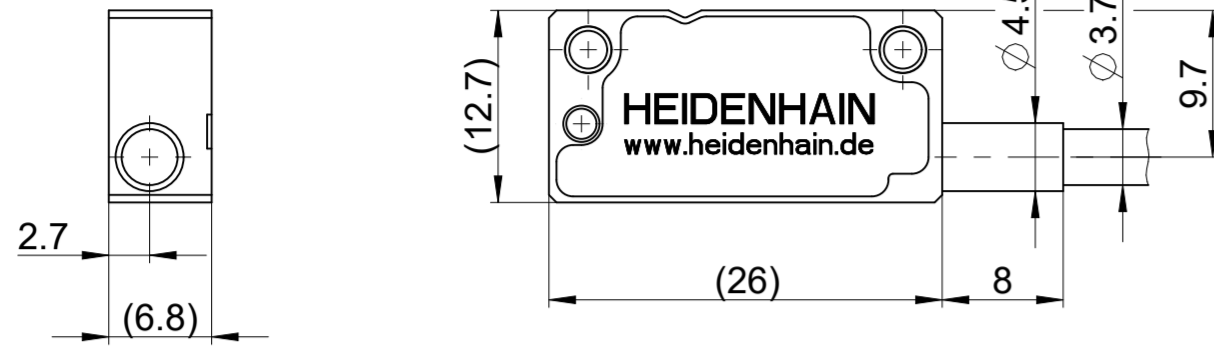
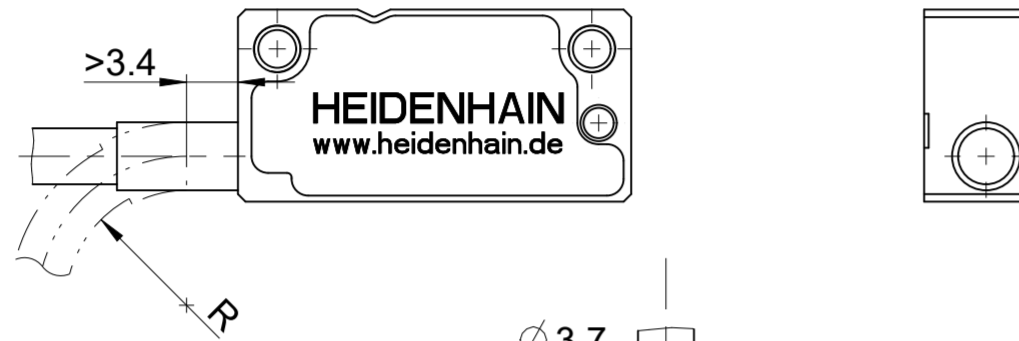


mögliche Kabelausgänge  
available cable outlets

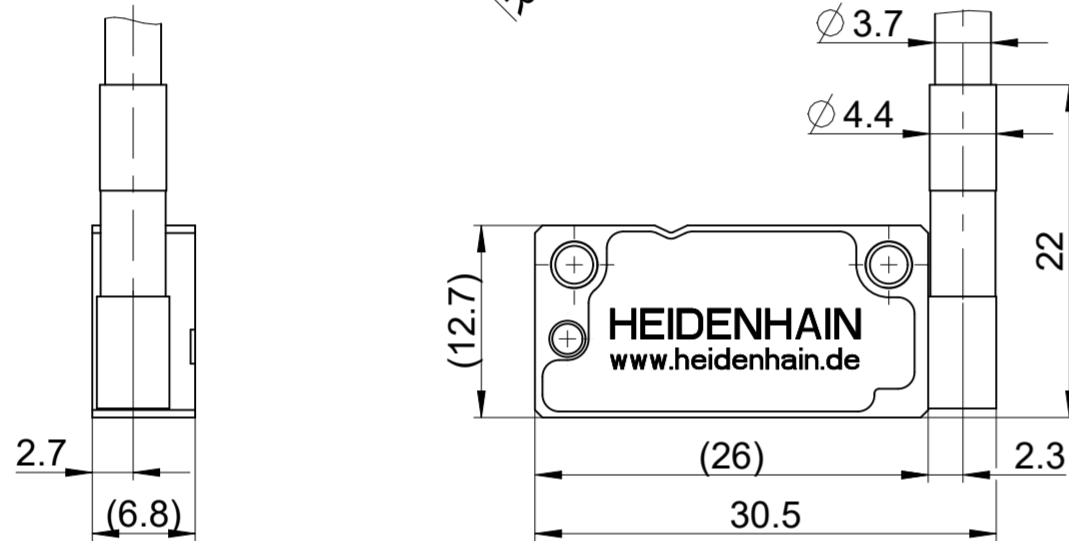
RIANA1=1  
Kabelausgang rechts  
cable outlet right



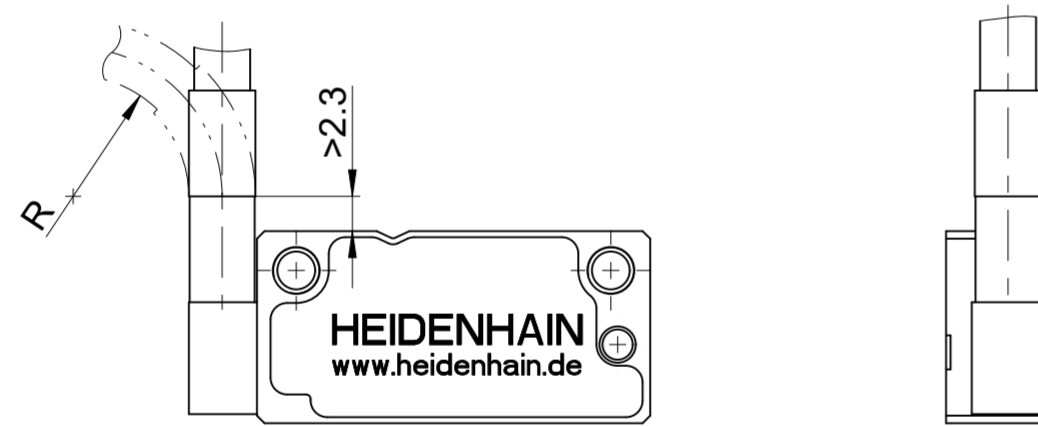
RIANA1=2  
Kabelausgang links  
cable outlet left



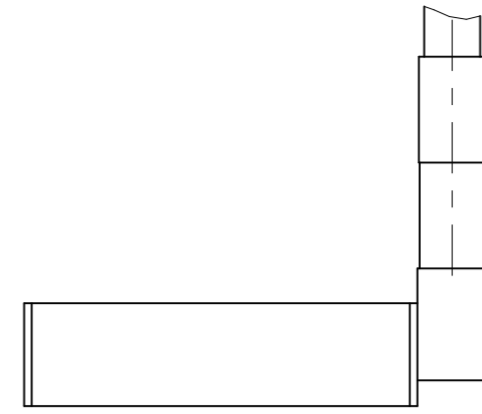
RIANA1=11  
Kabelausgang rechts,  
gewinkelt; 0°  
cable outlet right,  
angled; 0°



RIANA1=12  
Kabelausgang links,  
gewinkelt; 0°  
cable outlet left,  
angled; 0°



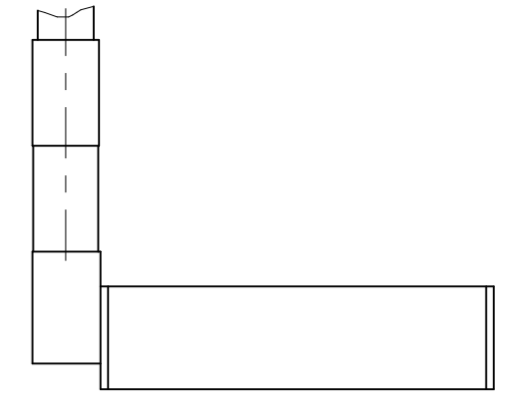
RIANA1=13  
Kabelausgang rechts,  
gewinkelt; 90°  
cable outlet right,  
angled; 90°



RIANA1=14  
Kabelausgang rechts,  
gewinkelt; 180°  
cable outlet right,  
angled; 180°



RIANA1=15  
Kabelausgang links,  
gewinkelt; 90°  
cable outlet left,  
angled; 90°

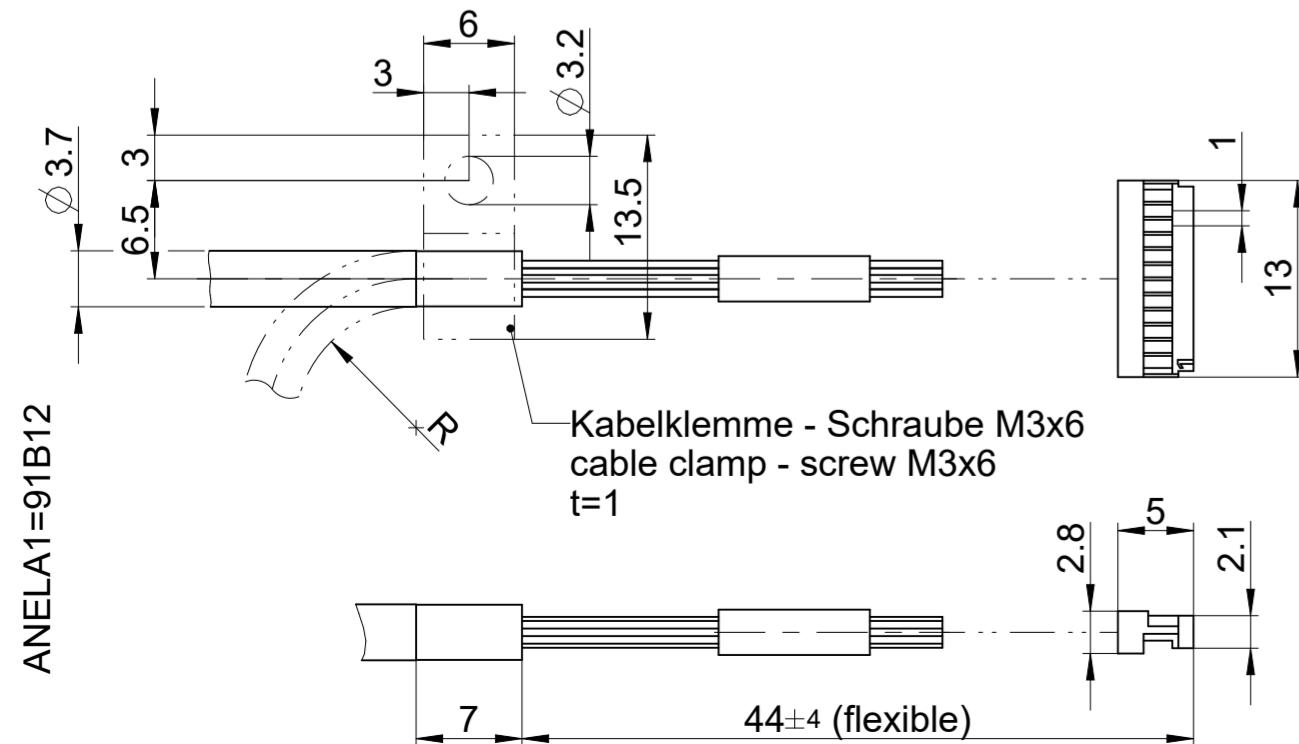


RIANA1=16  
Kabelausgang links,  
gewinkelt; 180°  
cable outlet left,  
angled; 180°



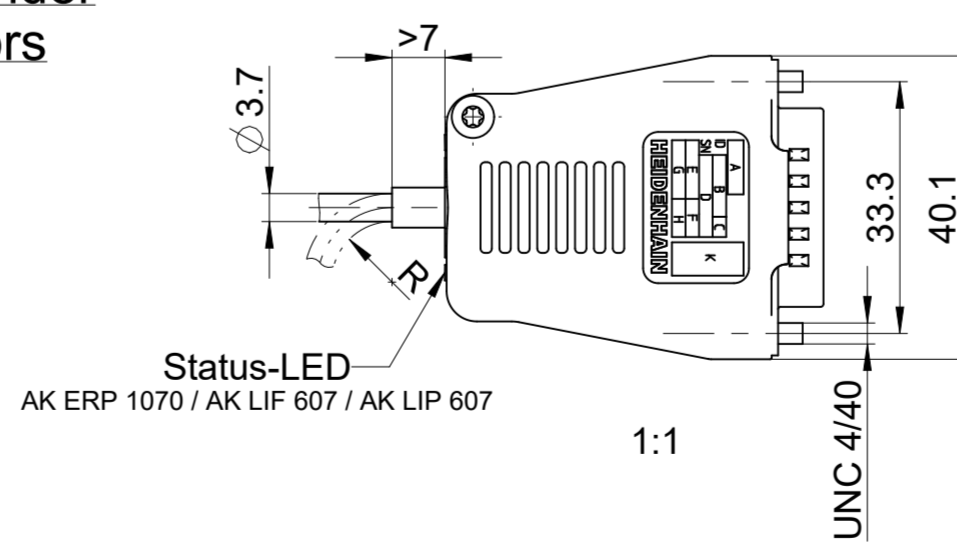
mögliche Steckverbinder  
available connectors

JST SHR-12V-S

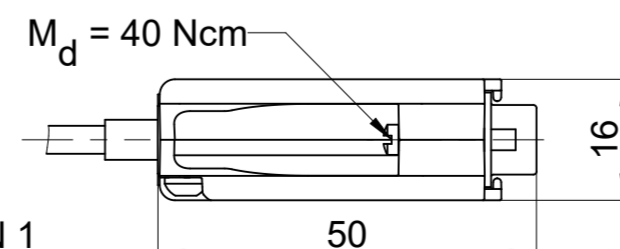
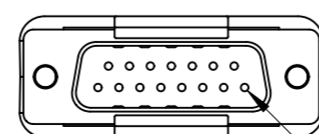


Kabelklemme - Schraube M3x6  
cable clamp - screw M3x6  
t=1

15-pin D-sub



ANELA1=AIS15 (TTL)  
ANELA1=BIS15 (1VSS)



Biegeradius R des Kabels  
Starre Konfiguration ≥ 8mm  
Wechselbiegung ≥ 40mm

Bend radius R of cable  
Rigid configuration ≥ 8mm  
Frequent flexing ≥ 40mm

Original drawing		ID number:	
Scale	Format	Change No.	C112878-5
2:1	A2	Phase:	Serie
Dimensions in mm		Tolerierung nach DIN ISO 8015 Tolerances as per DIN ISO 8015	
Kabelausgänge / Steckverbinder, Pettig cable outlets / connectors, Pettigrew-		Allgemeintol. ISO 2768-mH ±6mm:±0,2 General tol. ISO 2768-mH ±6mm:±0,2	
Anschlussmaße / Mating Dimensions		Version   Revision   Sheet   Page	
The reproduction, distribution and utilization of this document as well as the communication of its contents to others without express authorization is prohibited. Offenders will be held liable for the payment of damages. All rights reserved in the event of the grant of a patent, utility model or design. (ISO 16016)		1 of 1	
<b>HEIDENHAIN</b> DR. JOHANNES HEIDENHAIN GmbH 83301 Traunreut, Germany		D1223068-01 - B-01 Document number	