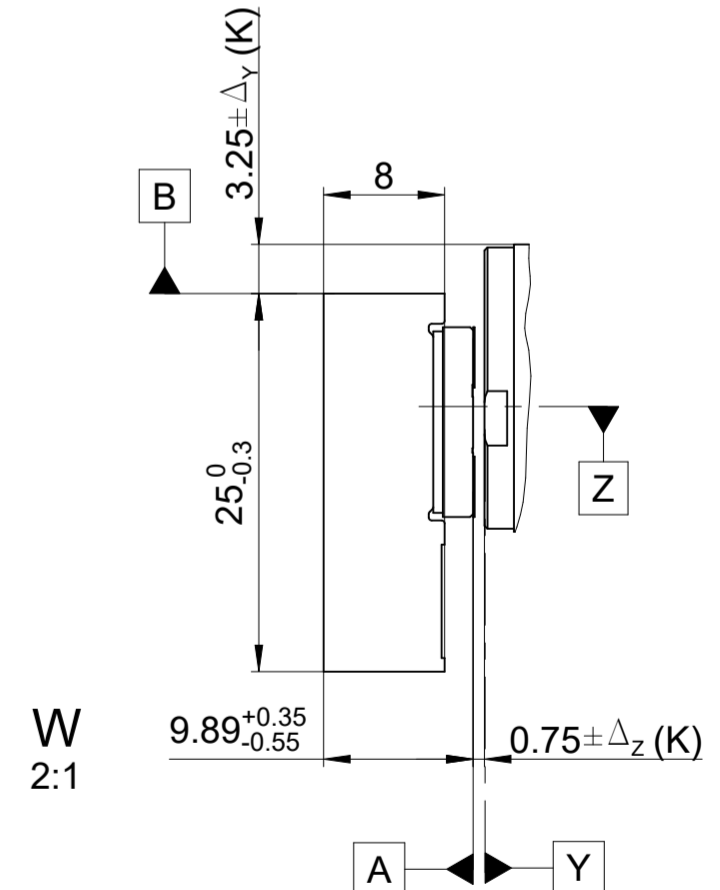
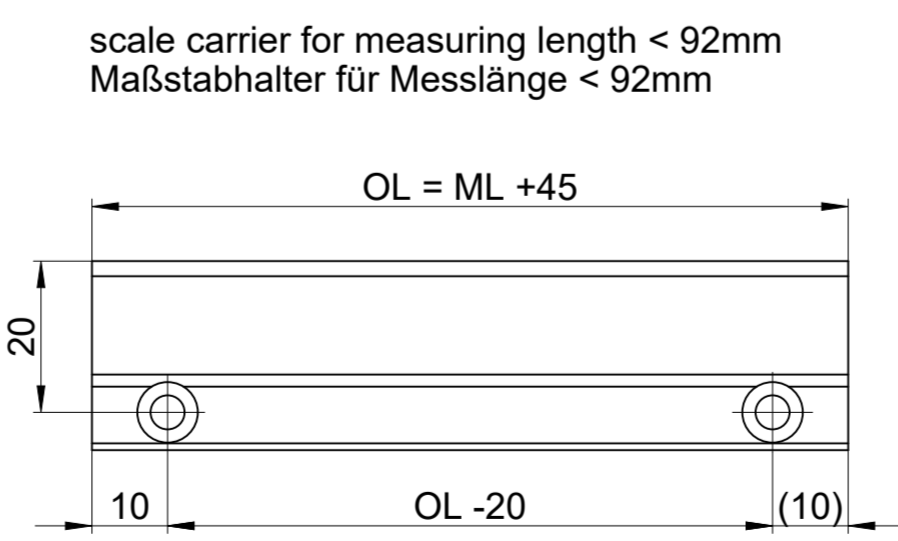


- M = machine guideway / Maschinenführung
- ML = measuring length / Messlänge
- OL = overall length / Gesamtlänge
- ↔ = 0 ... ML
- ⊙ = beginning of the measuring length / Beginn der Messlänge
- RI = reference mark(s) / Referenzmarke(n)
- k = any position of selected reference mark starting from the beginning of the ML
beliebige Position der ausgewählten Referenzmarke vom Beginn der ML
- j = additional reference marks space n x 50
zusätzliche Referenzmarken im Abstand von n x 50
- C = cable / Anschlusskabel
- K = required mating dimensions / kundenseitige Anschlussmaße
- L = LED function control / LED Funktionskontrolle
- R = bending radius / Biegeradius
stat. R ≥ 8mm, dyn. R ≥ 20mm
- RL = residual length / Restlänge
- S1, S2 = switch signal / Schaltsignal
- n = 1,2,3,...

BA = glass ceramic scale on aluminium carrier / Glaskeramikmaßstab auf Aluminiumprofil

- Permissible position deviation scanning head - glass scale A B
 Zulässige Lageabweichungen Abtastkopf - Glasmaßstab A B
- $\Delta_z = \pm 0.2\text{mm}$ (gap / Abstand)
 - $\Delta_y = \pm 0.5\text{mm}$ (lateral / Verschiebung)
 - $\varphi_z = \pm 0.25\text{mrad}$ or / oder $\pm 0.014^\circ$ (yaw angle / Gierwinkel)
 - $\varphi_y = \pm 5.00\text{mrad}$ or / oder $\pm 0.29^\circ$ (pitch angle / Nickwinkel)
 - $\varphi_x = \pm 5.00\text{mrad}$ or / oder $\pm 0.29^\circ$ (roll angle / Rollwinkel)



		Original drawing		ID number: -	
		Scale	Format	Change No.	C157360-22
Dimensions in mm		1:1	A2	Phase: Serie	
MS35 BA MS35 BA Anschlussmaße / Mating Dimensions				Tolerances as per ISO 8015	
<small>The reproduction, distribution and utilization of this document as well as the communication of its contents to others without express authorization is prohibited. Offenders will be held liable for the payment of damages. All rights reserved in the event of the grant of a patent, utility model or design. (ISO 16016)</small>				General Tolerances ISO 2768:1989-mH ≤ 6±0.2	
		Released	Version	Revision	Sheet
www.rsf.at		07.02.2024	D1213431-02-A-01		Page 1 of 1
		Document number			