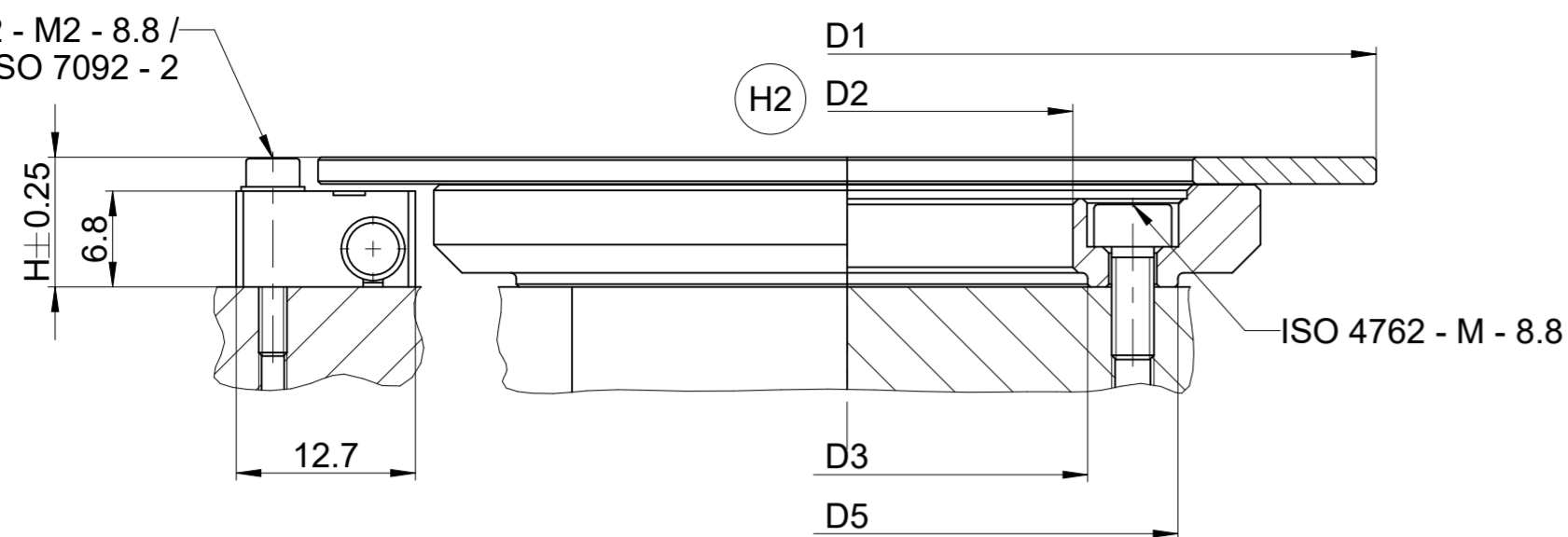
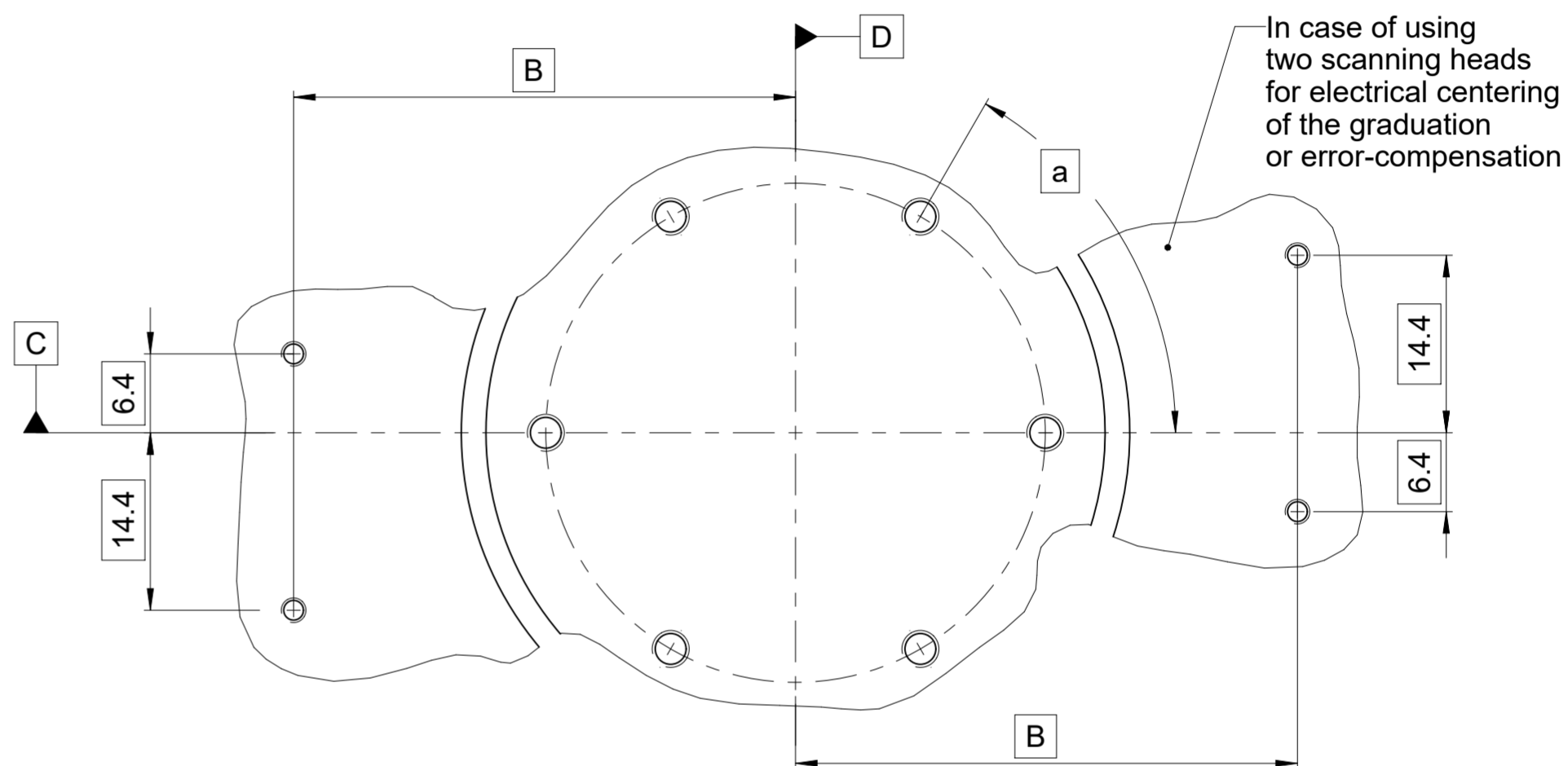
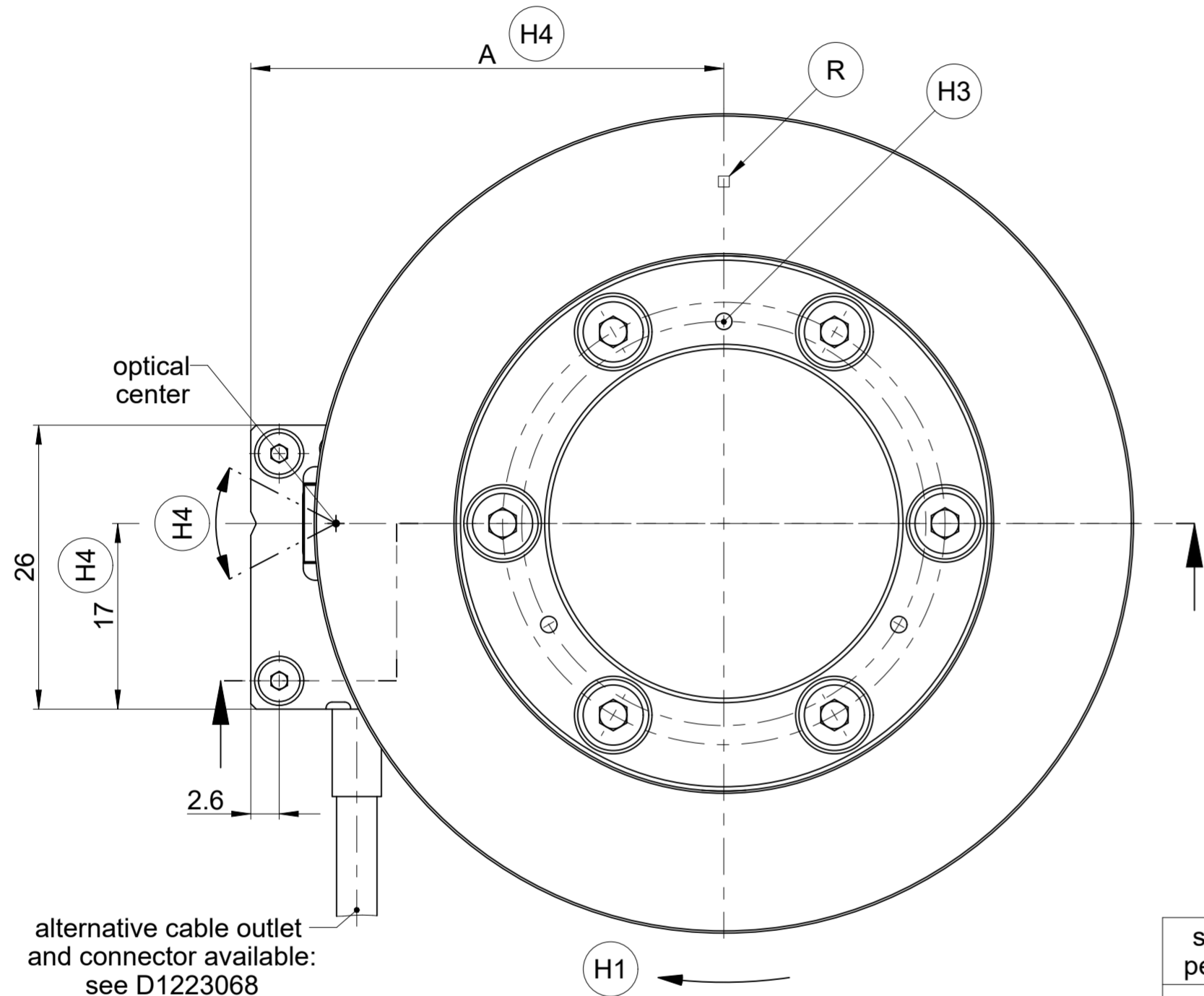
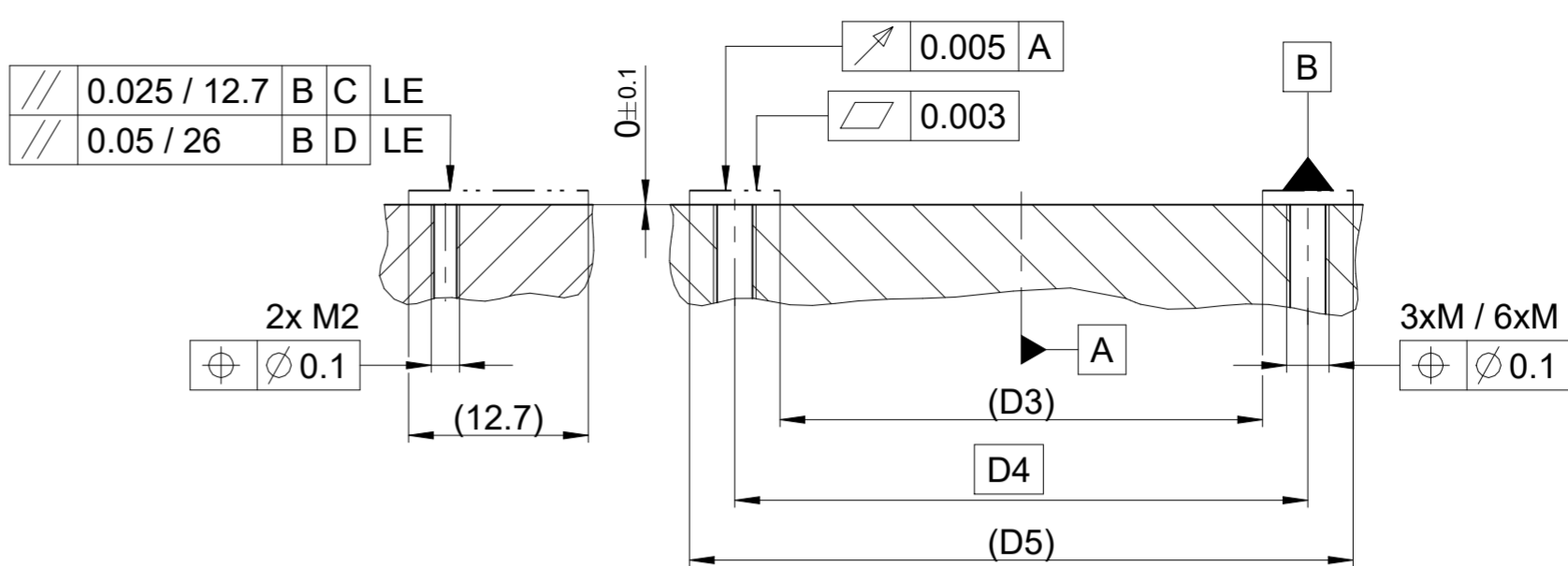


ISO 4762 - M2 - 8.8 /  
ISO 7092 - 2



Required mating dimensions

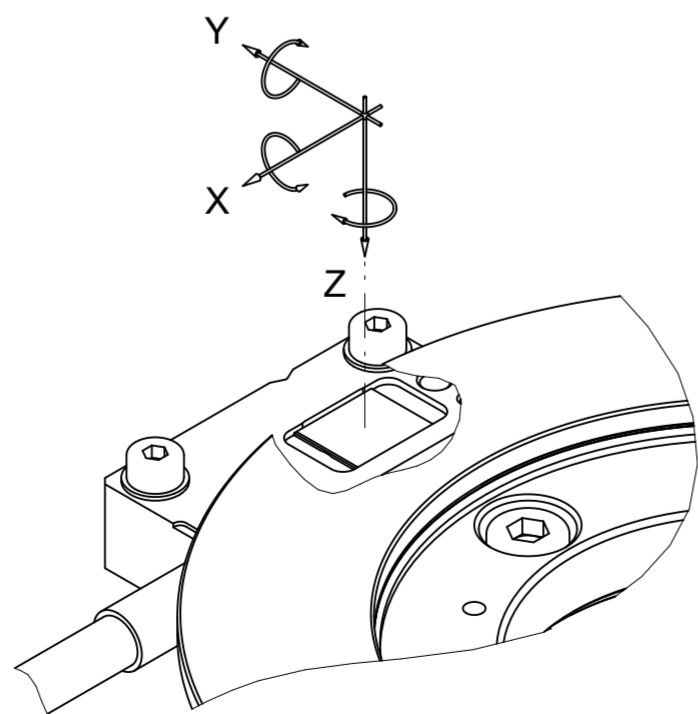


Mounting tolerances;  
given tolerances in combination

signal periods	23000 SP	30000 SP	50000 SP	63000 SP
X	adjustable, see H4			
Y	adjustable, see H4			
Z	±0.1			
Rx	±2mrad			
Ry	±2mrad			
Rz	adjustable, see H4			

signal periods	23000 SP	30000 SP	50000 SP	63000 SP
A	34.08	43.3	60.05	81.05
B	31.48	40.7	57.45	78.45
D1	∅ 57	∅ 75	∅ 109	∅ 151
D2	∅ 13H6	∅ 32H6	∅ 62H6	∅ 104H6
D3	∅ 15.1	∅ 34.1	∅ 64.5	∅ 106.5
D4	∅ 21.5	∅ 40.5	∅ 72	∅ 114
D5	∅ 27.9	∅ 46.9	∅ 79.5	∅ 121.5
H	9.2	9.2	10.2	10.2
a	3 x 120° = 360°	6 x 60° = 360°	6 x 60° = 360°	6 x 60° = 360°
M	M3	M3	M4	M4

- H1 = Positive direction of rotation
- H2 = Centering collar
- H3 = Marks for centering the circular scale (3 x 120°)
- H4 = Fine-adjustment of encoder-head to reach best incremental signal (within "play" of the mounting screws); given measures are nominal
- R = Reference mark
- A = Bearing



Original drawing		ERP 10x0		ID number:	C101796-05
Scale		ERP10x0		Change No.	C101796-05
Format		Anschlussmaße / Mating Dimensions		Phase:	Serie
Dimensions in mm	2:1	A2		Tolerierung nach DIN ISO 8015	
				Allgemeintol. ISO 2768-mH ±0.2	
				General tol. ISO 2768-mH ±0.2	
The reproduction, distribution and utilization of this document as well as the communication of its contents to others without express authorization is prohibited. Offenders will be held liable for the payment of damages. All rights reserved in the event of the grant of a patent, utility model or design. (ISO 16016)					
<b>HEIDENHAIN</b>				Version	Revision
DR. JOHANNES HEIDENHAIN GmbH				Sheet	Page
83301 Traunreut, Germany				1	1
				<b>D1213105-02 - A-01</b>	
				Document number	