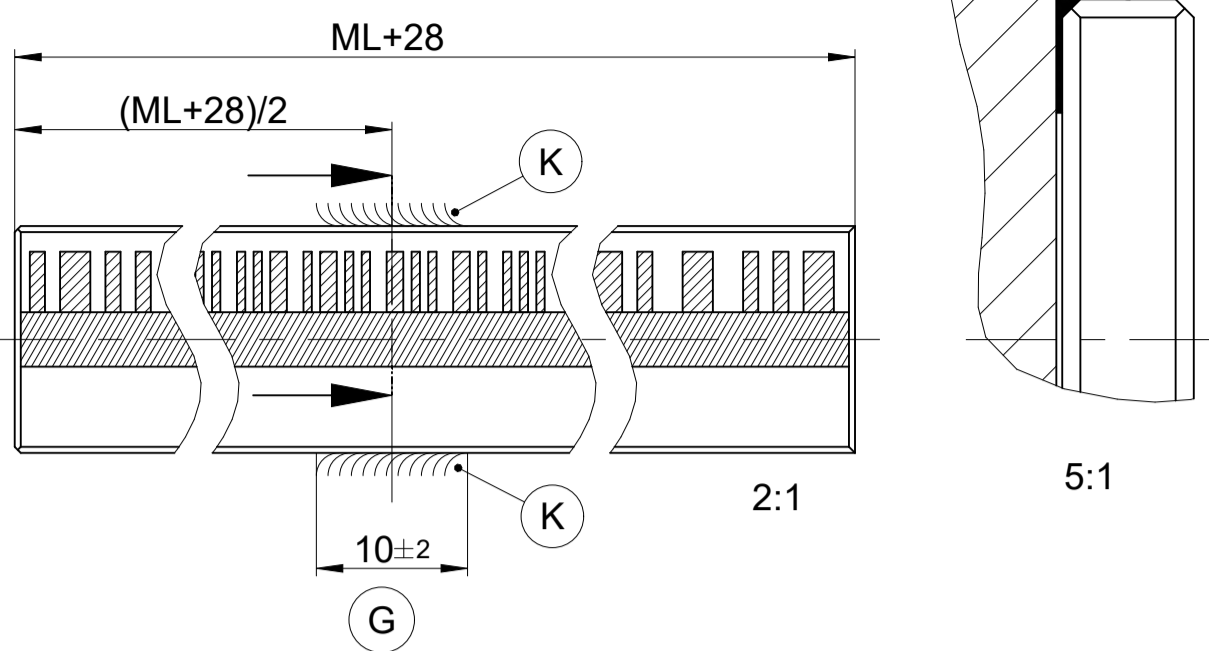
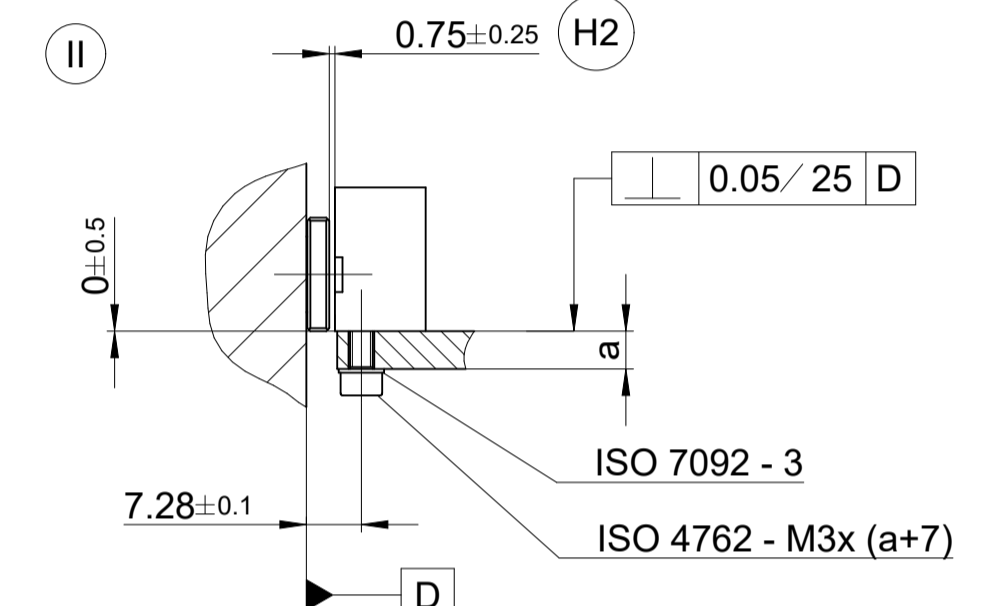
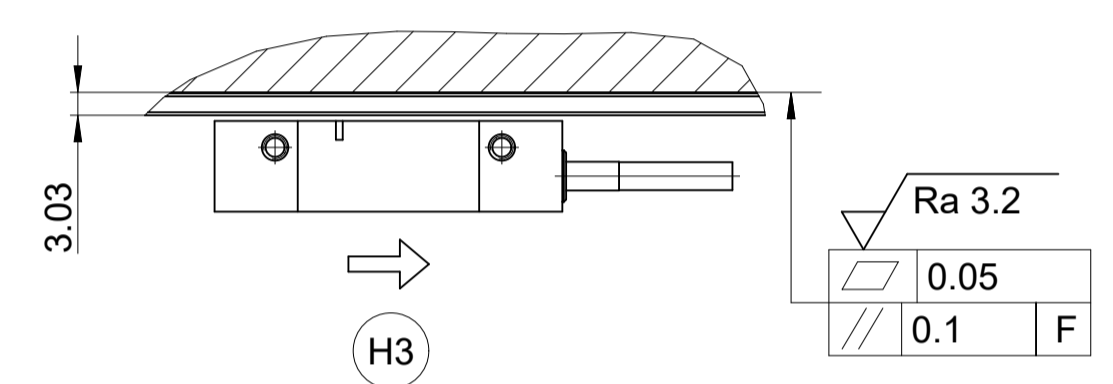
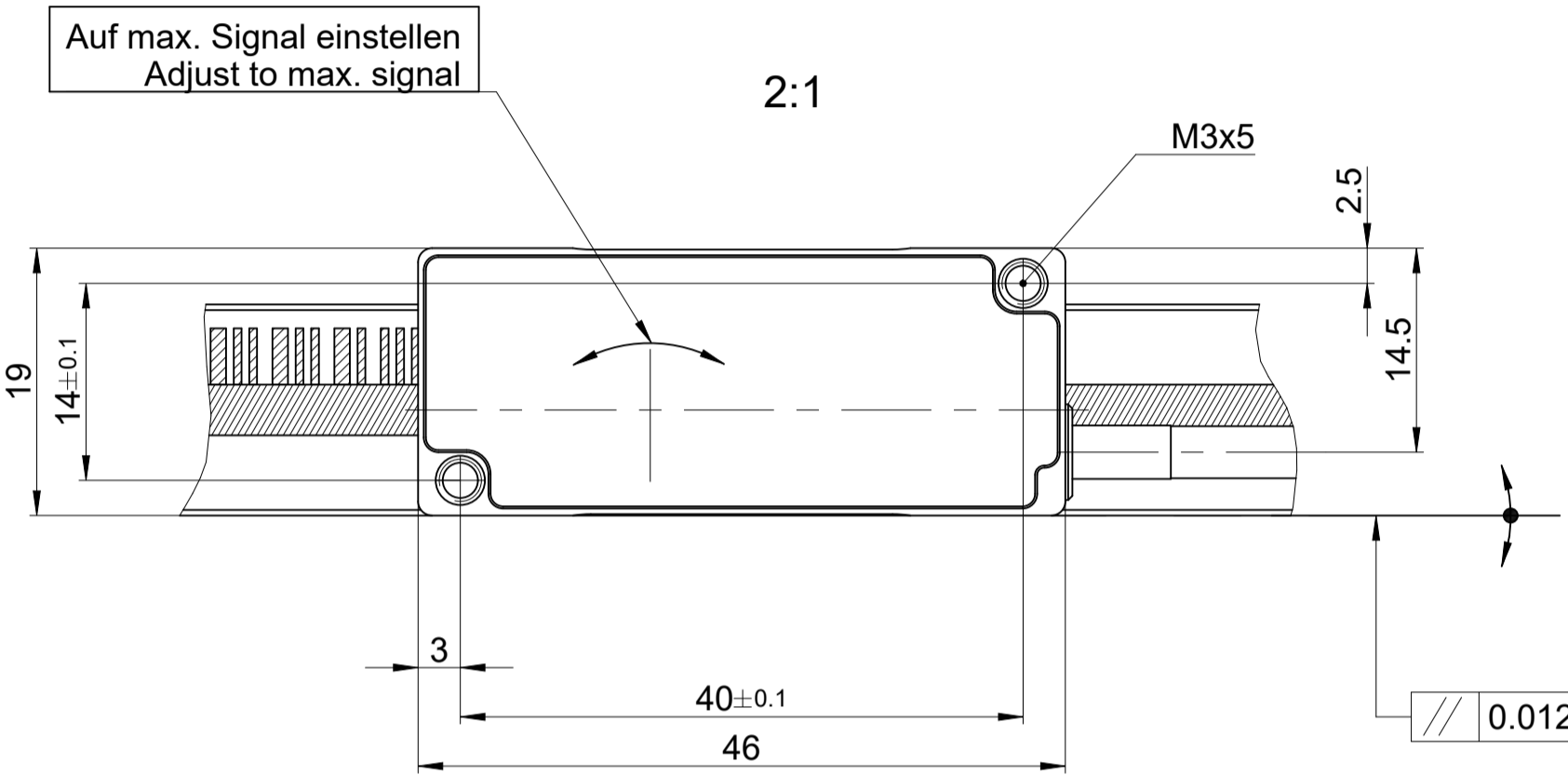
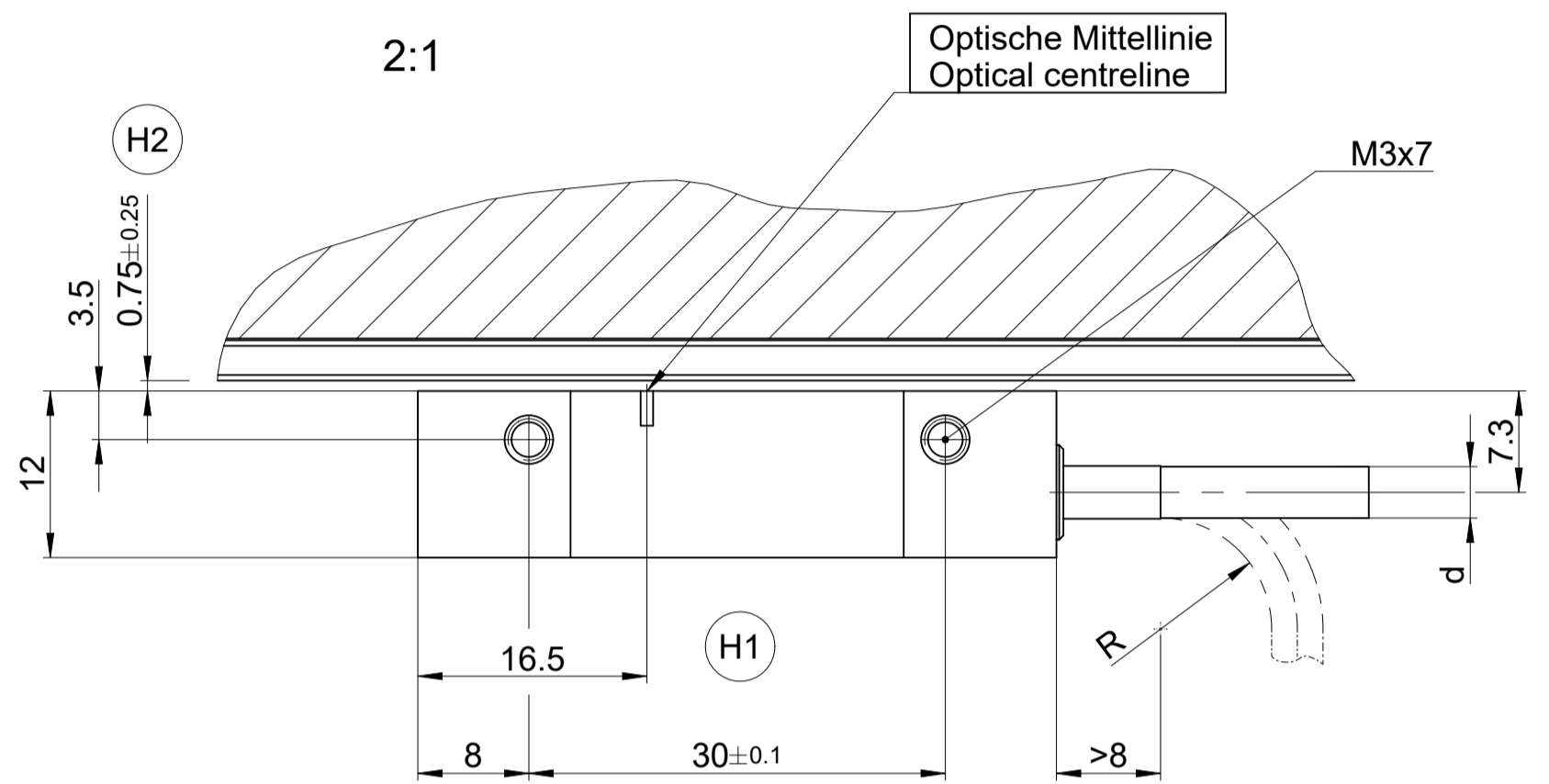
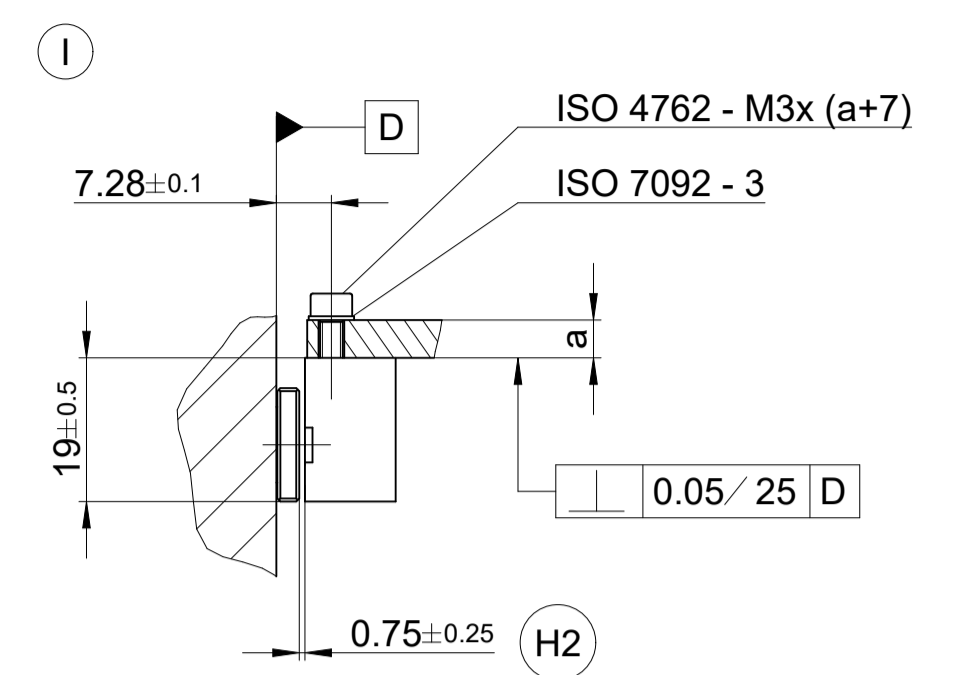
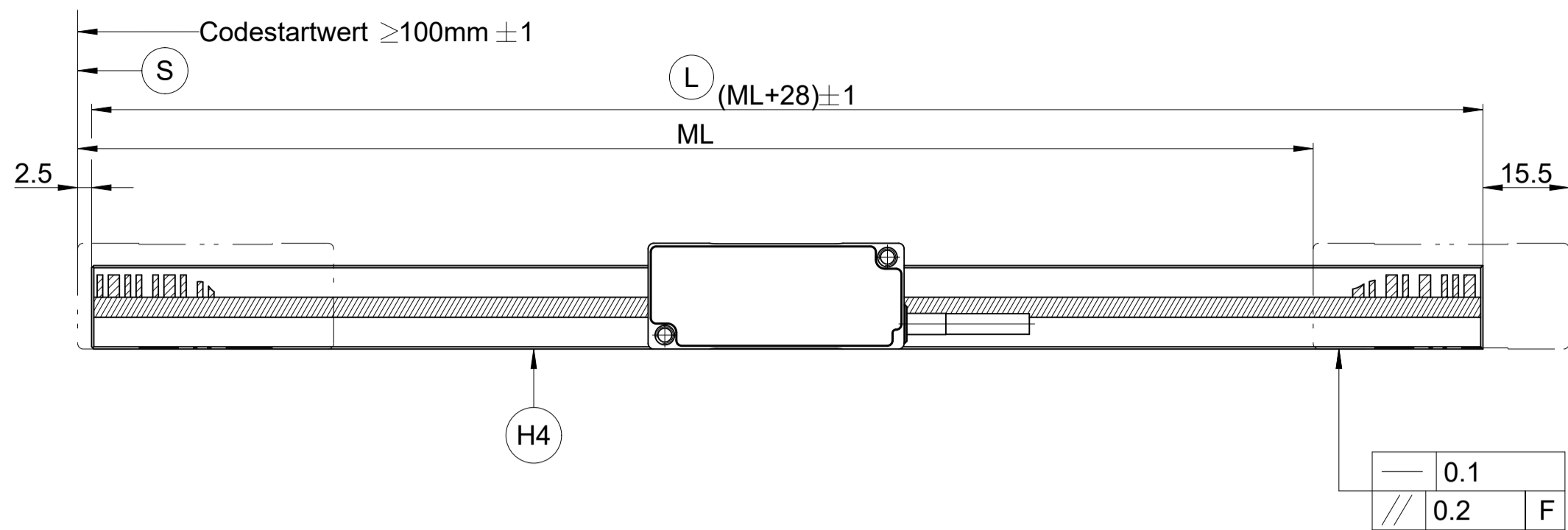
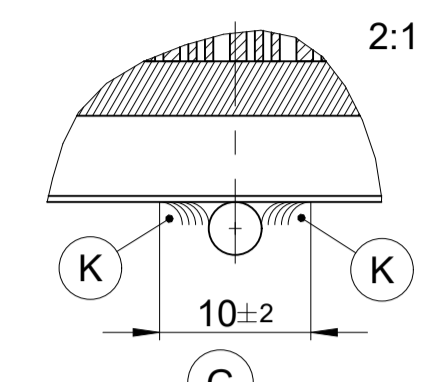


Fixpunktklebung
Fixed-point bond

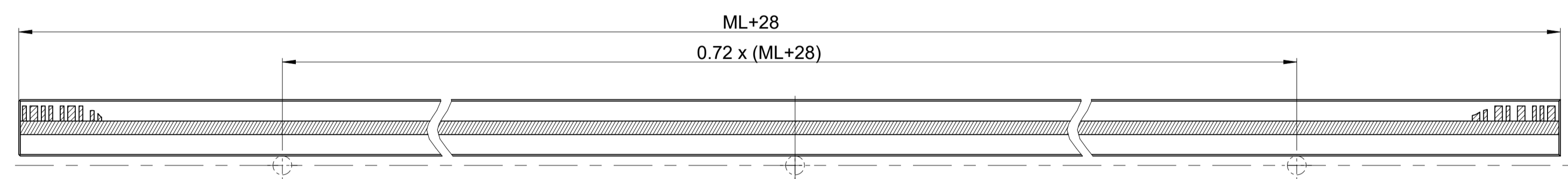


Bei mittigem Anschlagstift
With stop pin at center

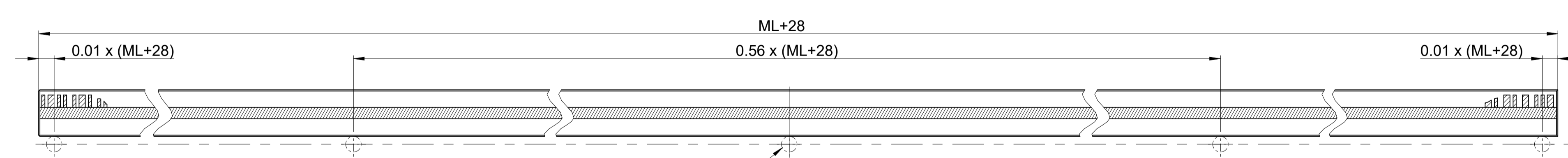


Position Anschlagstifte
Position stop pins

ML ≤ 2040



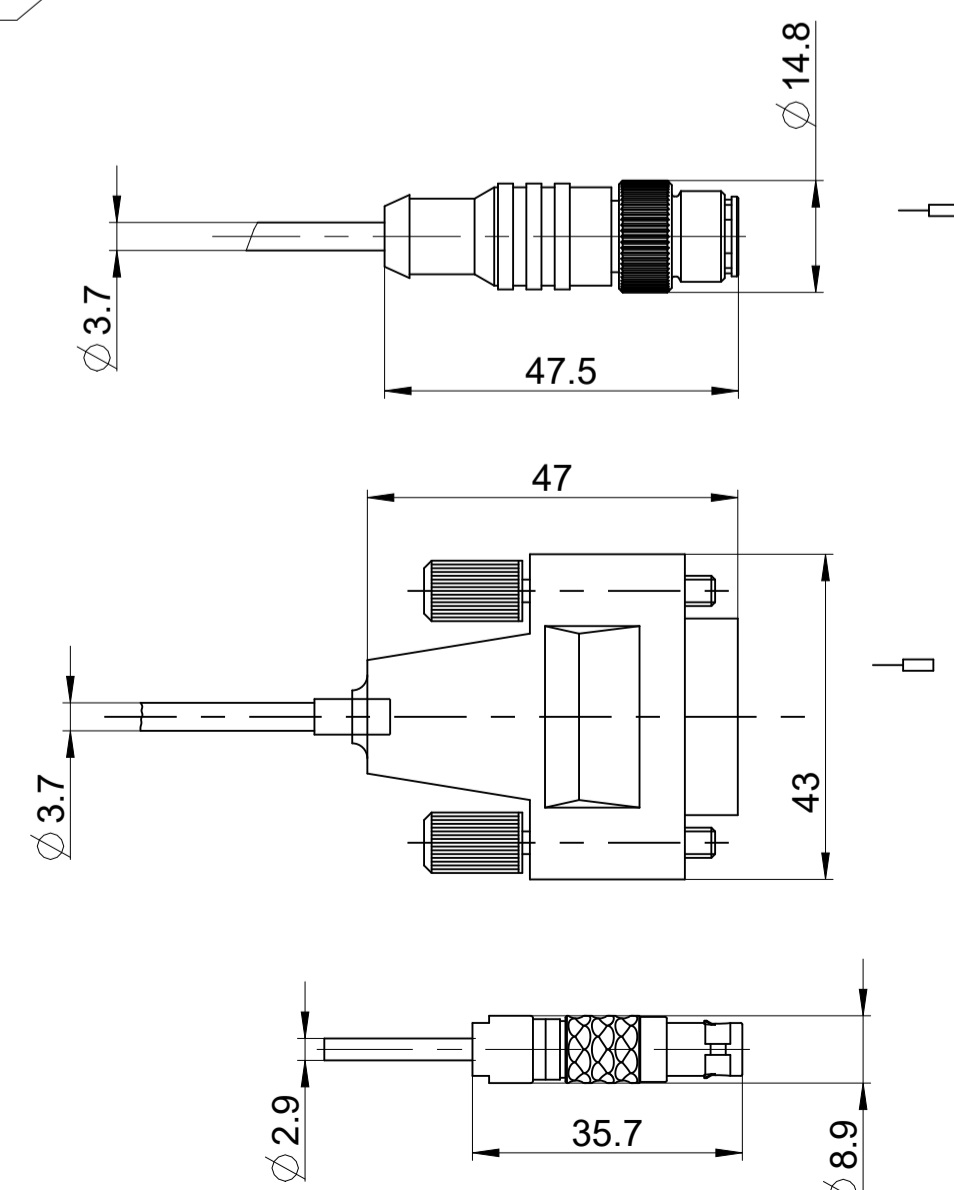
ML > 2040



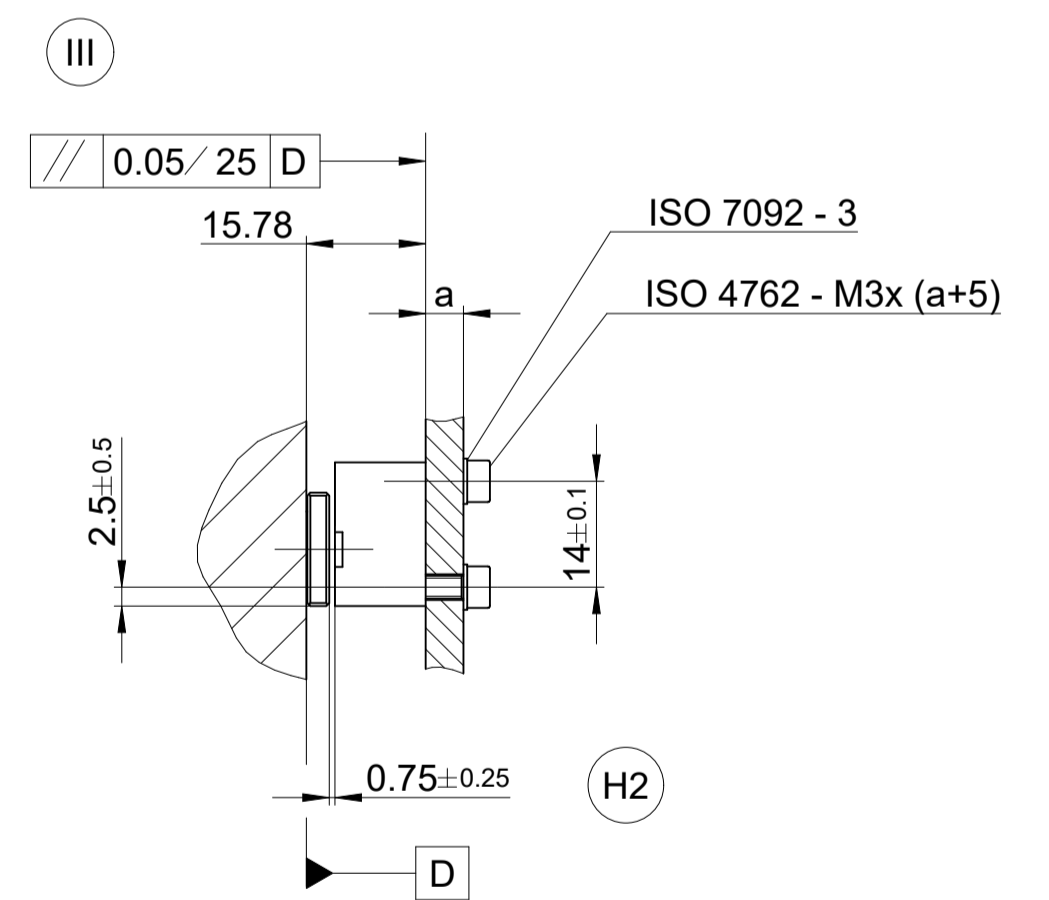
Empfehlung / Recommendation: Ø 3

- I II III = Montagemöglichkeiten
- F = Maschinenführung
- * = Anbaufehler plus dyn. Führungsfehler
- L = Maßstablänge
- S = Beginn der Messlänge ML
- H1 = Optische Mittellinie
- H2 = Montageabstand Abtastkopf zu Maßstab
- H3 = Bewegungsrichtung der Abtasteinheit für Ausgangssignale gemäß Schnittstellenbeschreibung
- H4 = Anschlagfläche Maßstab
- K = Klebstoff
- G = Dosierlänge

- Mounting options
- Machine guideway
- Mounting failure plus dyn. failures of guideway
- Scale length
- Beginning of measuring length ML
- Optical centreline
- Mounting gap
- Direction of scanning unit motion for output signals in accordance with interface description
- Stop surface scale
- Adhesive
- Dosage length



	d	R	R
PUR	D 3.7 mm	> 8 mm	>= 40 mm
PUR	D 2.9 mm	> 6 mm	>= 30 mm



ID number: 1200644-01		Change No. C160627-05		Series	
LIC 41x3		LIC 41x3		Tolerances as per ISO 8015	
Anschlussmaße / Mating Dimensions		General Tolerances ISO 2768-1:2008-mH ±0.2		ISO 15015	
Released 15.12.2023		Version / Revision / Sheet		Page	
DR. JOHANNES HEIDENHAIN GmbH		D1200644-05-A-01		1 of 1	
83301 Traunreut, Germany		Document number			